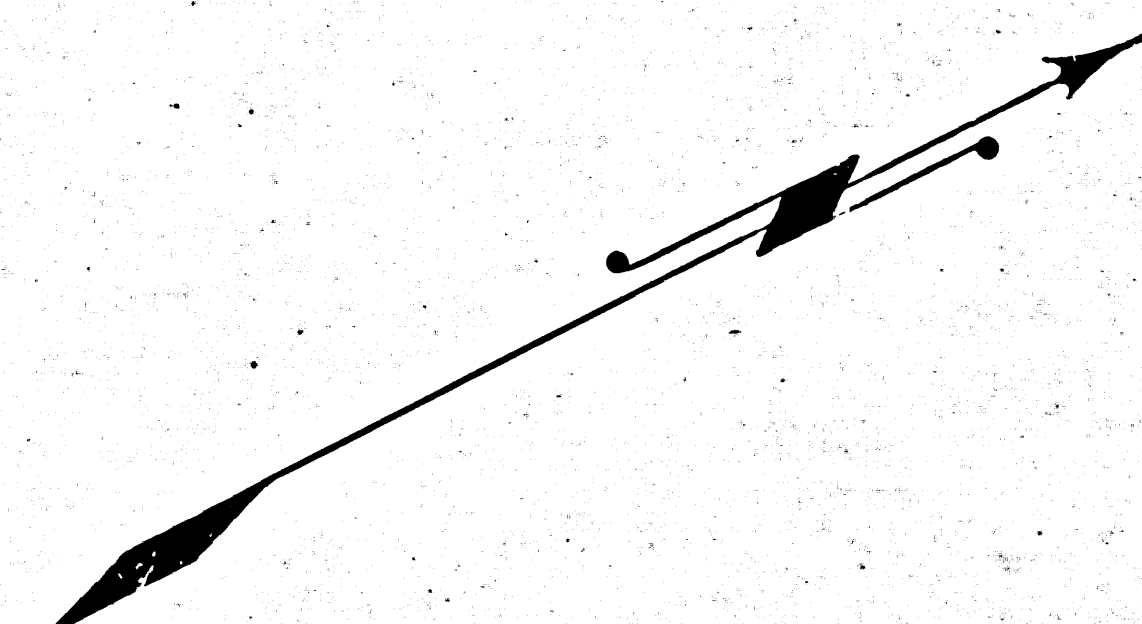
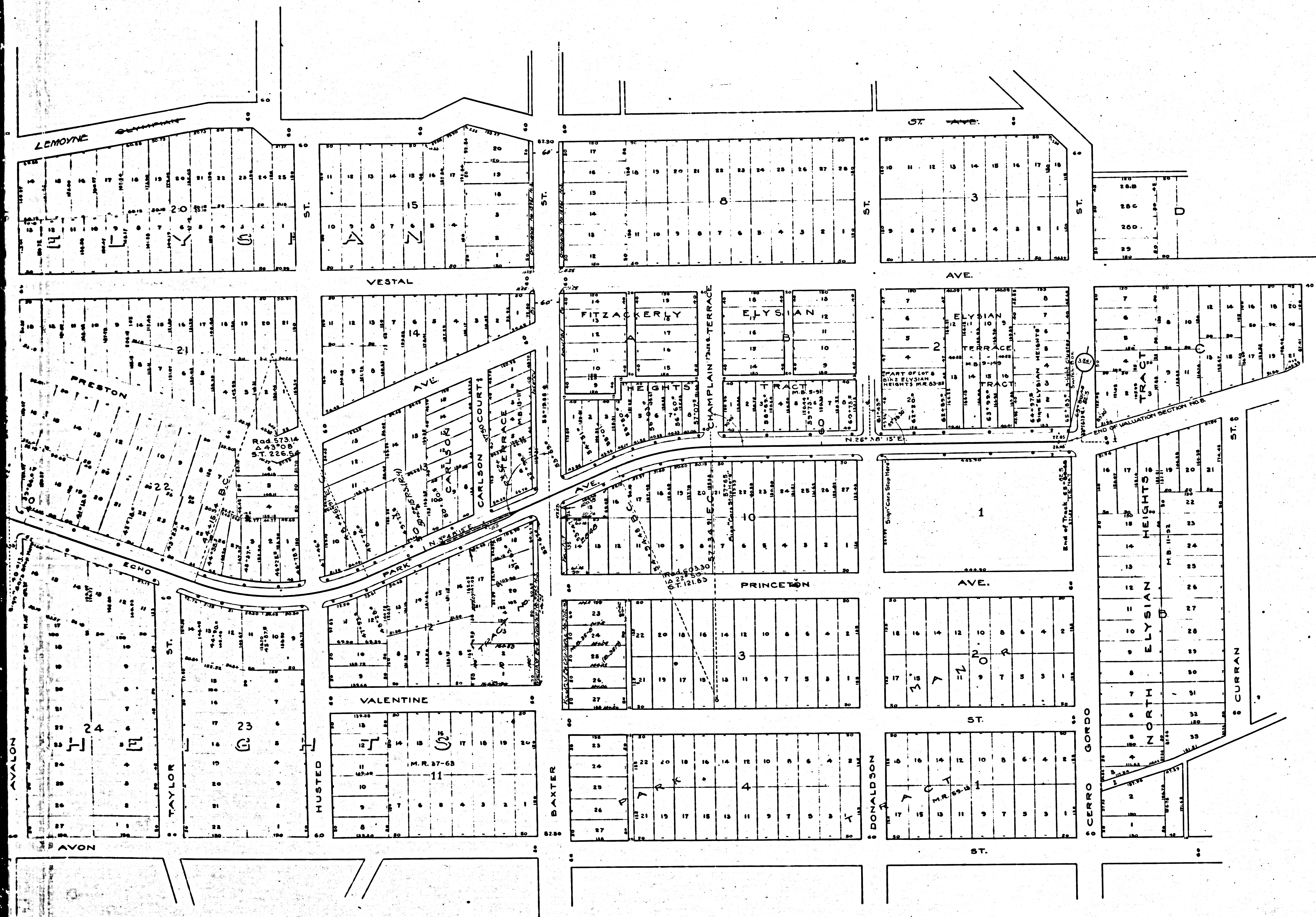


F.M. 10220
A1 OF A2



AVI 1 C094

VALUATION SECTION NO. 8
 PACIFIC ELECTRIC RAILWAY CO.
 MAP OF
ELYSIAN PARK LINE

FROM JUNCTION WITH HOLLYWOOD LINE, AT SUNSET BLVD.
 AND ECHO PARK AVENUE, TO CERRO GORDO STREET.

Index 29
 SCALE
 1 INCH = 100 FEET.

Note: Mile posts indicate distance
 from the intersection point of
 the center lines of Fourth and
 Hill Streets, Los Angeles.

STATE OF CALIFORNIA }
 COUNTY OF LOS ANGELES }
 We the undersigned officers of the Pacific
 Electric Railway Company, do hereby certify that this map is a true and correct map
 of said Company's ELYSIAN PARK LINE, from its junction with Hollywood Line at
 Sunset Blvd. and Echo Park Ave., to Cerro Gordo St. Prepared from records now in
 office of said Company.

ATTEST
 _____ President
 _____ Secretary
 _____ Chief Engineer

Subscribed and Sworn to before me this _____ day of _____ 1911

Notarial Seal

 Notary Public in and for said County
 of Los Angeles, State of California.

NOTE This map was filed in 1908
 as authority for track data only

F.M. 10220
 A2 OF A2

PACIFIC ELECTRIC RY.
 Office of Chief Engineer.
 C.E.V. 7