

FOR REALIGNMENT SEE F.M. 110249 SHEET 1  
 Sta. 11+47 Abandon & Plug 12' x 38' C.M.P.  
 Louis and Nealey Watson and Minnie E. Loplein.

Sta. 11+47 Abandon & Plug 12' x 38' C.M.P.

Sta. 8+35 Place 24" x 92' C.M.P.  
 Build 1 Headwall, Az. 127°  
 S-37, C-1.0, E & B-72

Sta. 19+02 Extend 18' x 85' C.M.P. 46' Right, Az. 113°  
 E & B-26

Sta. 23+35 Place 24" x 44' C.M.P.  
 Build 2 Standard Hws. Az. 108°  
 S-74, C-2.0, E & B-59

Sta. 23+47 Abandon 18' x 42' C.M.P.

Sta. 21+50 Abandon 12' x 70' C.M.P.

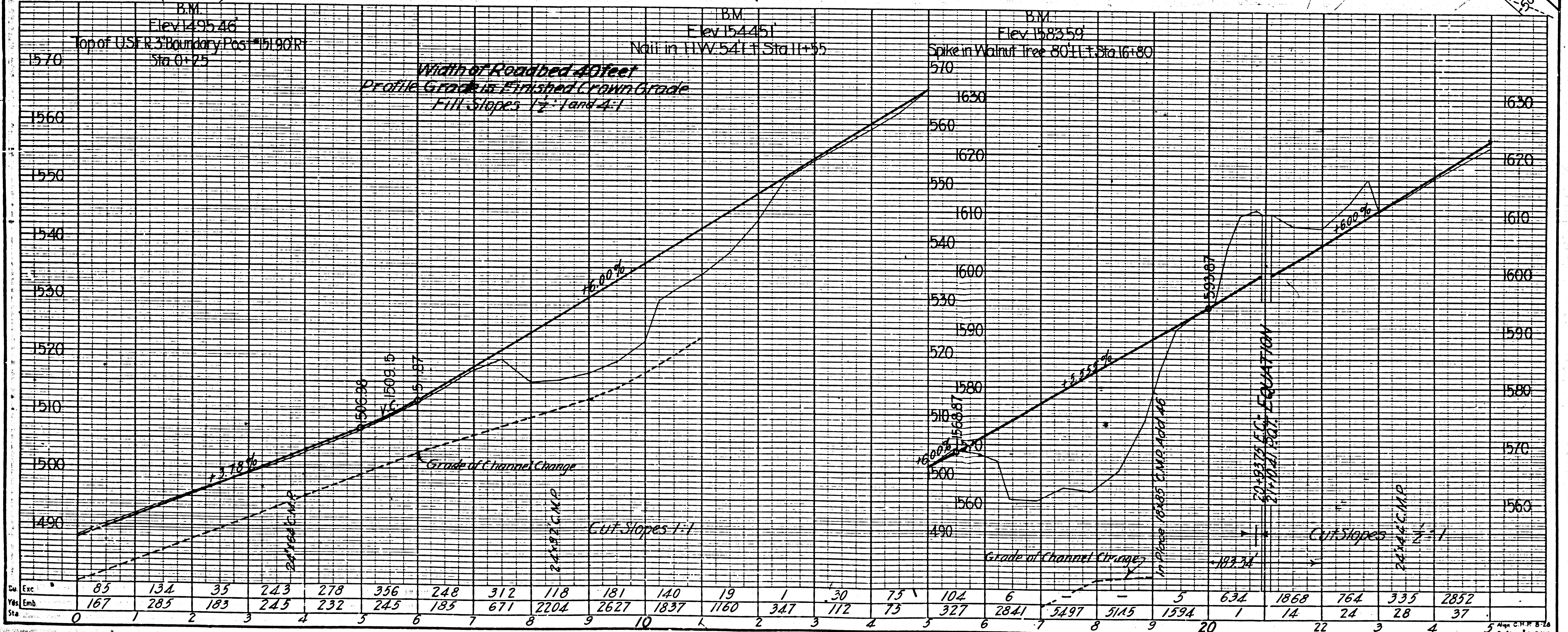
Channel Change  
 R=800.00  
 Δ=55.27'  
 L=774.23'  
 T=420.45'  
 E=103.76'

Channel Change  
 R=244.11  
 Δ=235'  
 L=355.71'  
 T=211.39'  
 E=99.20'

Channel Change  
 R=240.52  
 Δ=240.52'  
 L=338.77'  
 T=211.39'  
 E=99.20'

Channel Change  
 R=240.52  
 Δ=240.52'  
 L=338.77'  
 T=211.39'  
 E=99.20'

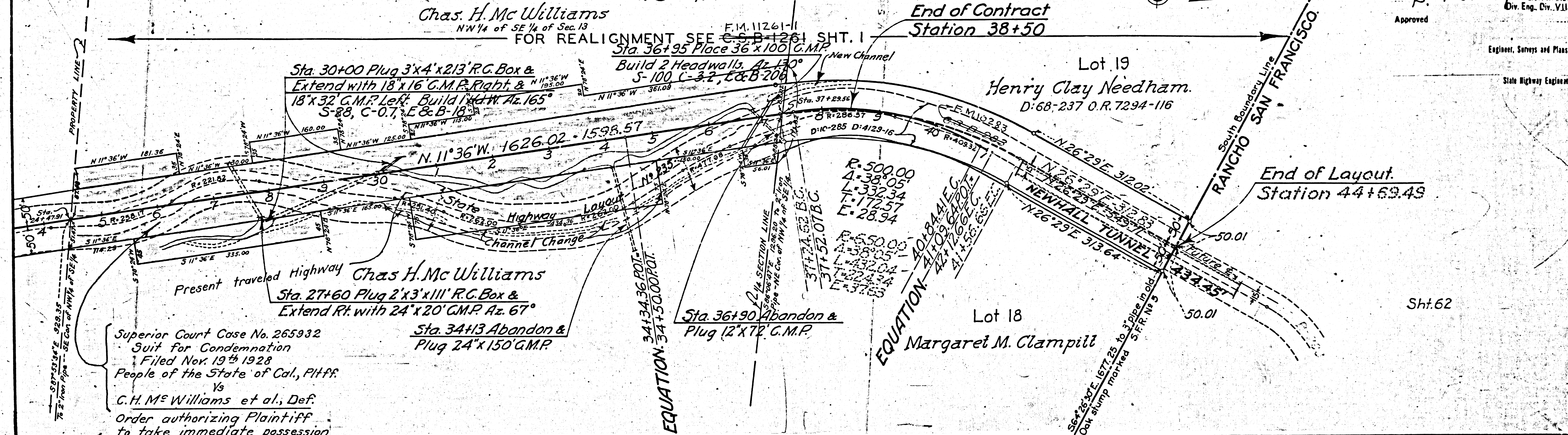
Channel Change  
 R=240.52  
 Δ=240.52'  
 L=338.77'  
 T=211.39'  
 E=99.20'



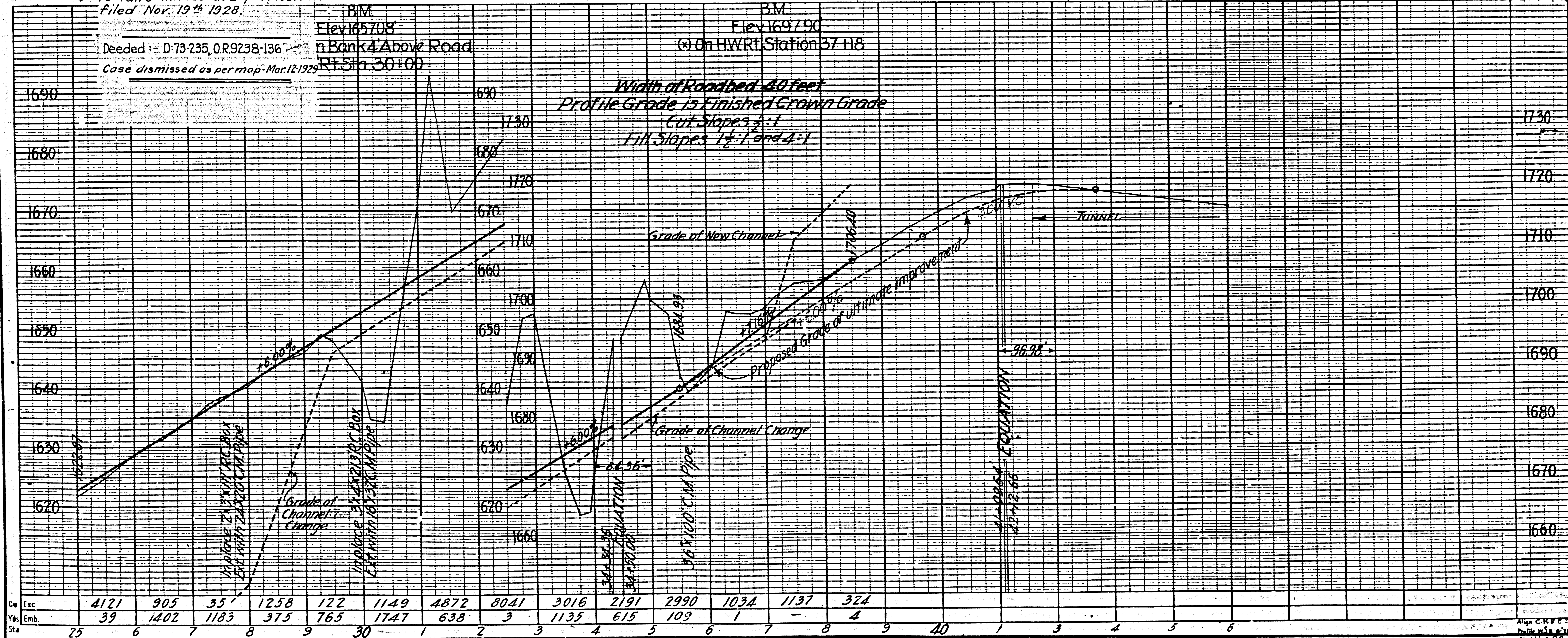
SEC. 13  
 T. 3 N., R. 16 W., S. B. & M.

DIV. COUNTY ROUTE SEC. SHEET TOTAL SHEETS  
 VII L.A. 4 E 4

Approved: *D. W. Cortright*  
 Div. Eng. Civ. VII.  
 Engineer, Surveys and Plans.  
 State Highway Engineer.



Superior Court Case No. 265932  
 Suit for Condemnation  
 Filed Nov. 19<sup>th</sup> 1928  
 People of the State of Cal., PHTF,  
 Vs  
 C. H. Mc Williams et al., Def.  
 Order authorizing Plaintiff  
 to take immediate possession  
 Filed Nov. 19<sup>th</sup> 1928.



Exc	4121	905	35'	1258	122	1149	4872	8041	3016	2191	2990	1034	1137	324		
Emb.	39	1402	1183	375	765	1747	638	3	1135	615	103	1	-	4		
Sta	25	6	7	8	9	30	1	2	3	4	5	6	7	8	9	40

F.M. 10249  
 A2 OF A2