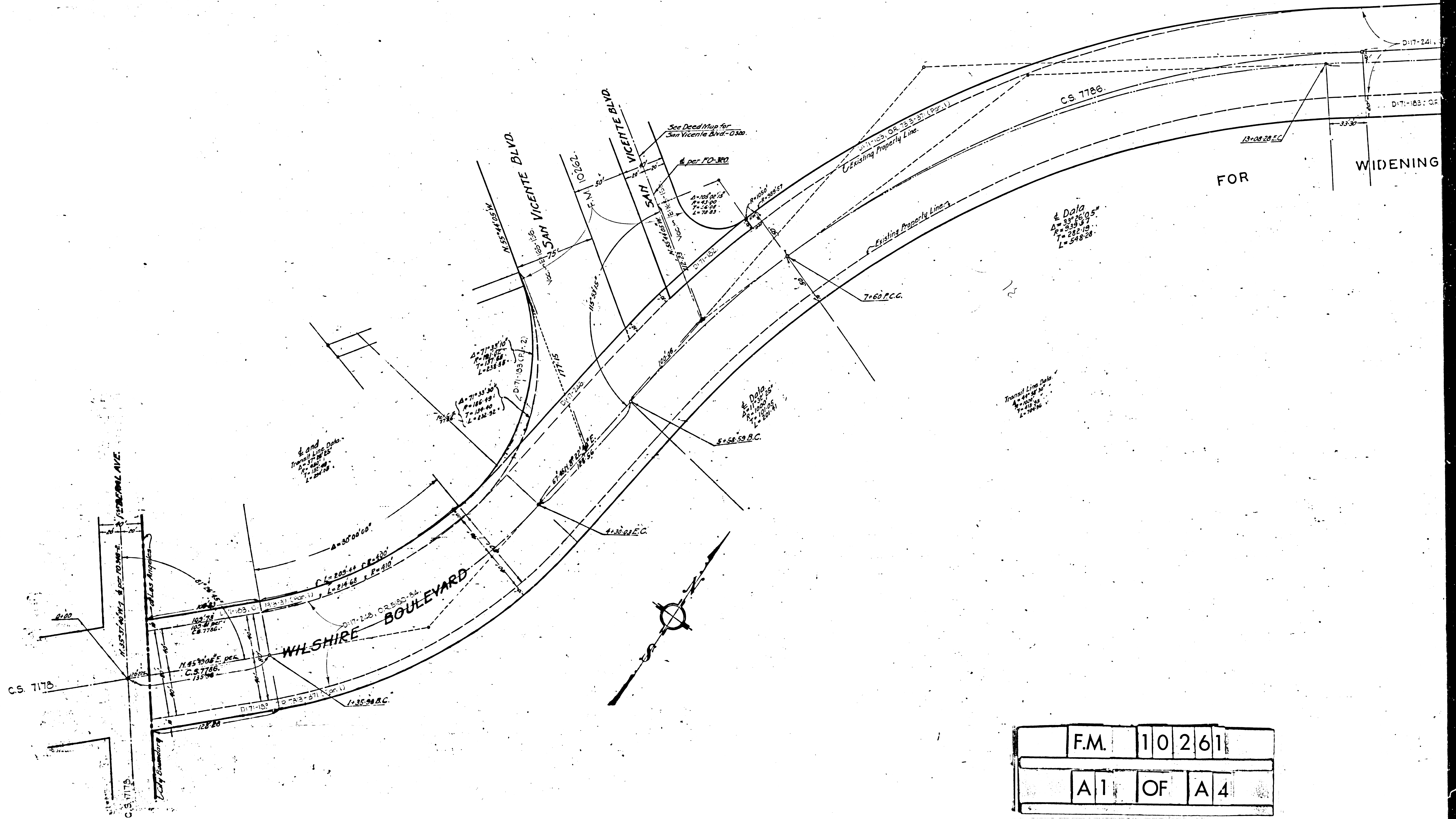


FOR WIDENING

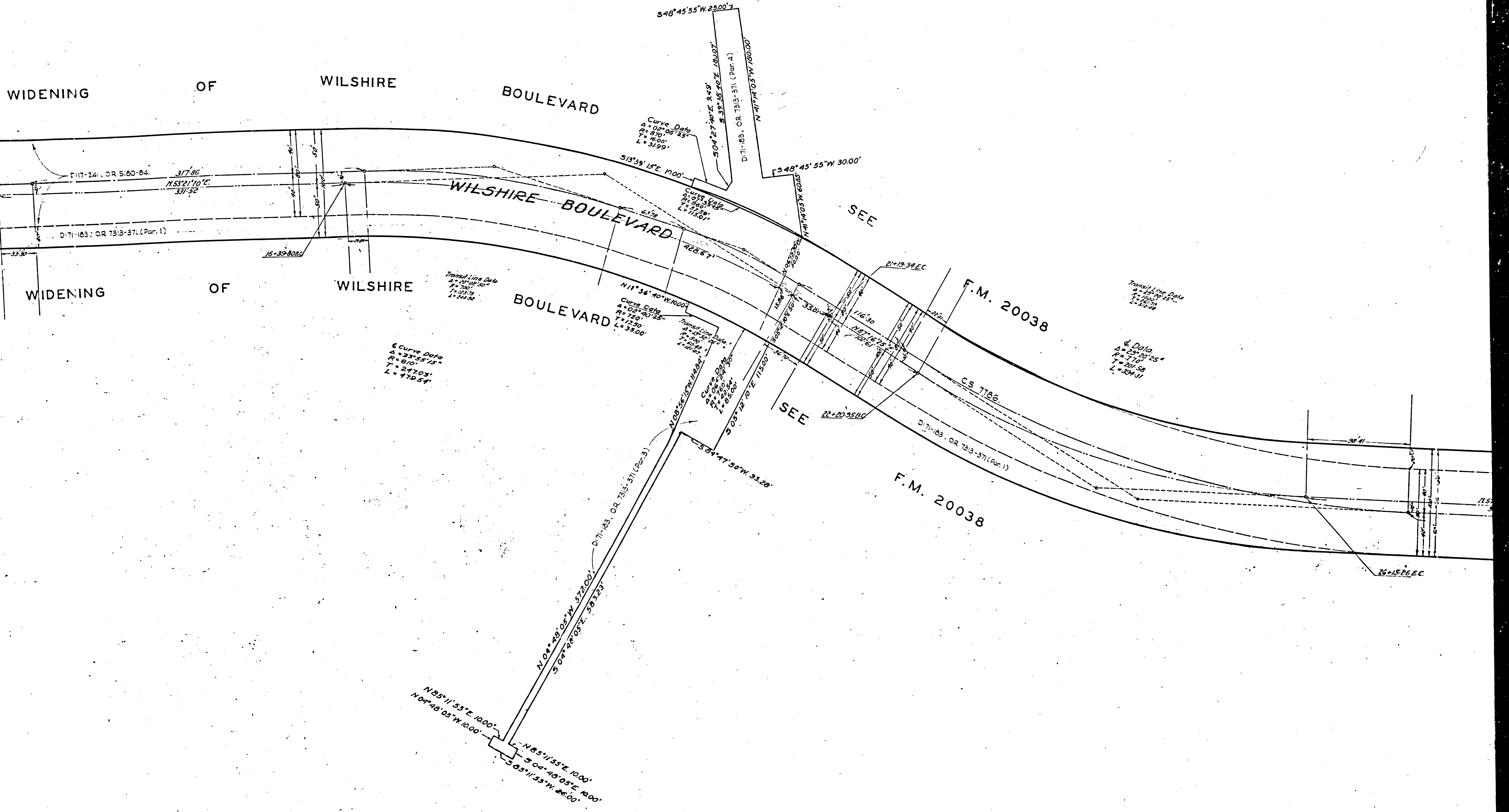
FOR WIDENING



F.M.	10	261
A1	OF	A4

WIDENING OF WILSHIRE BOULEVARD

WIDENING OF WILSHIRE BOULEVARD



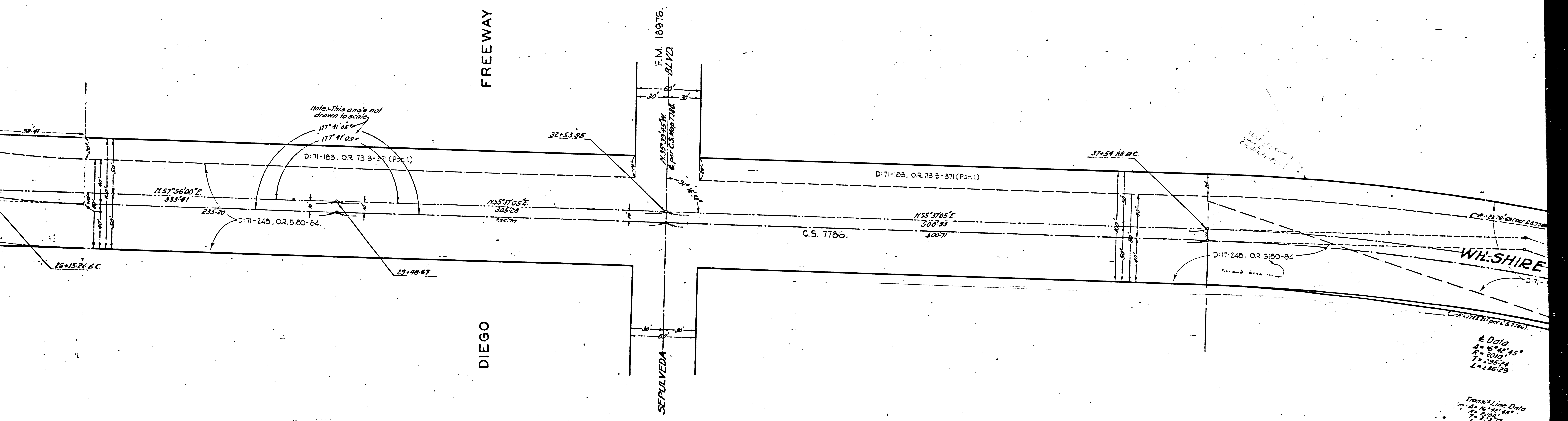
SEE F.M. 20038

FREEWAY

DIEGO

SAN

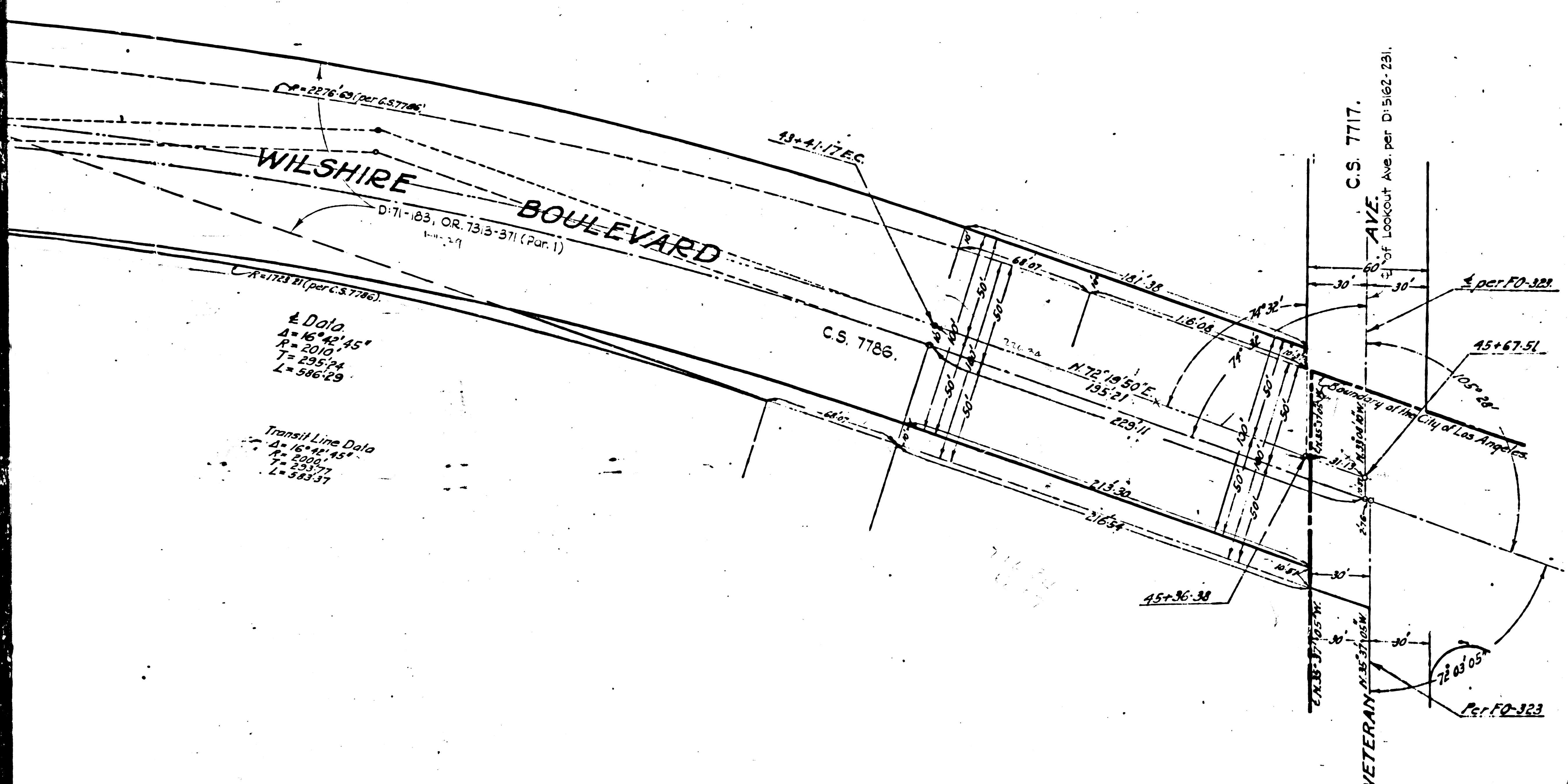
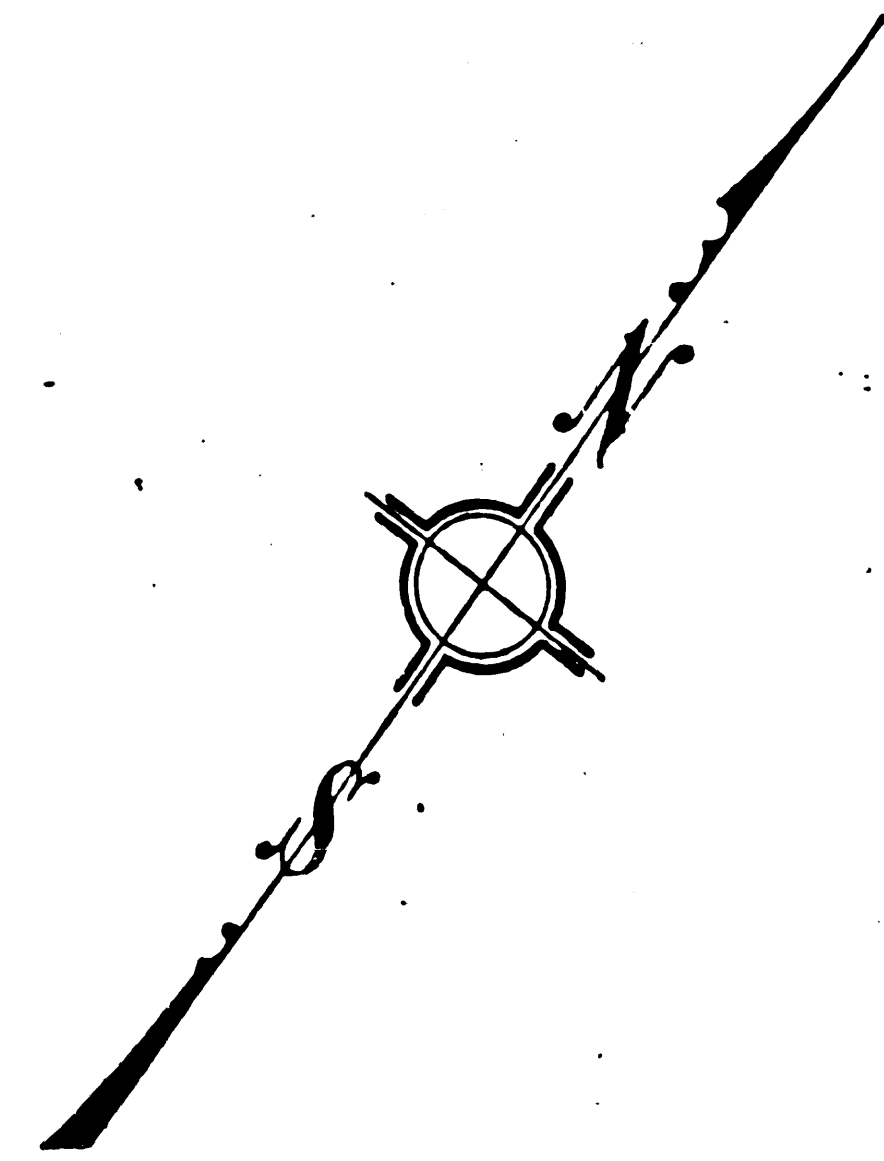
FOR



± Data
A = 46° 42' 45"
R = 3010'
T = 295.74
L = 316.29

Transit Line Data
A = 46° 42' 45"
R = 3010'
T = 295.74
L = 316.29

F.M.	10	2	61
A3	OF	A4	



CASH CONTRACT No. 348
 Map showing Right of Way sought to be acquired for the Improvement of
WILSHIRE BLVD.
 FROM FEDERAL AVE. to VETERAN AVE.

LOS ANGELES COUNTY ROAD DEPT.
 Office Work Anderson, after
 Checked By Symmonds, Assoc.
 Scale 1" = 40'
 Approved _____
 ROAD COMMISSIONER

INDEX 21.

The base of bearings for this map is the first course of Wilshire Blvd. northeast sur. l.v. from Federal Ave. per C.S. Map #7786.
 The original center line and right of way of Wilshire Blvd. as shown herein is per survey made in March, 1927 (see FO-348, pages 1 to 12) and is based on C.S. Map #7786. The original center line is referred to on this map as "Transit Line" and the new center line as "E."

F.M.	10	261
A 4	OF	A 4