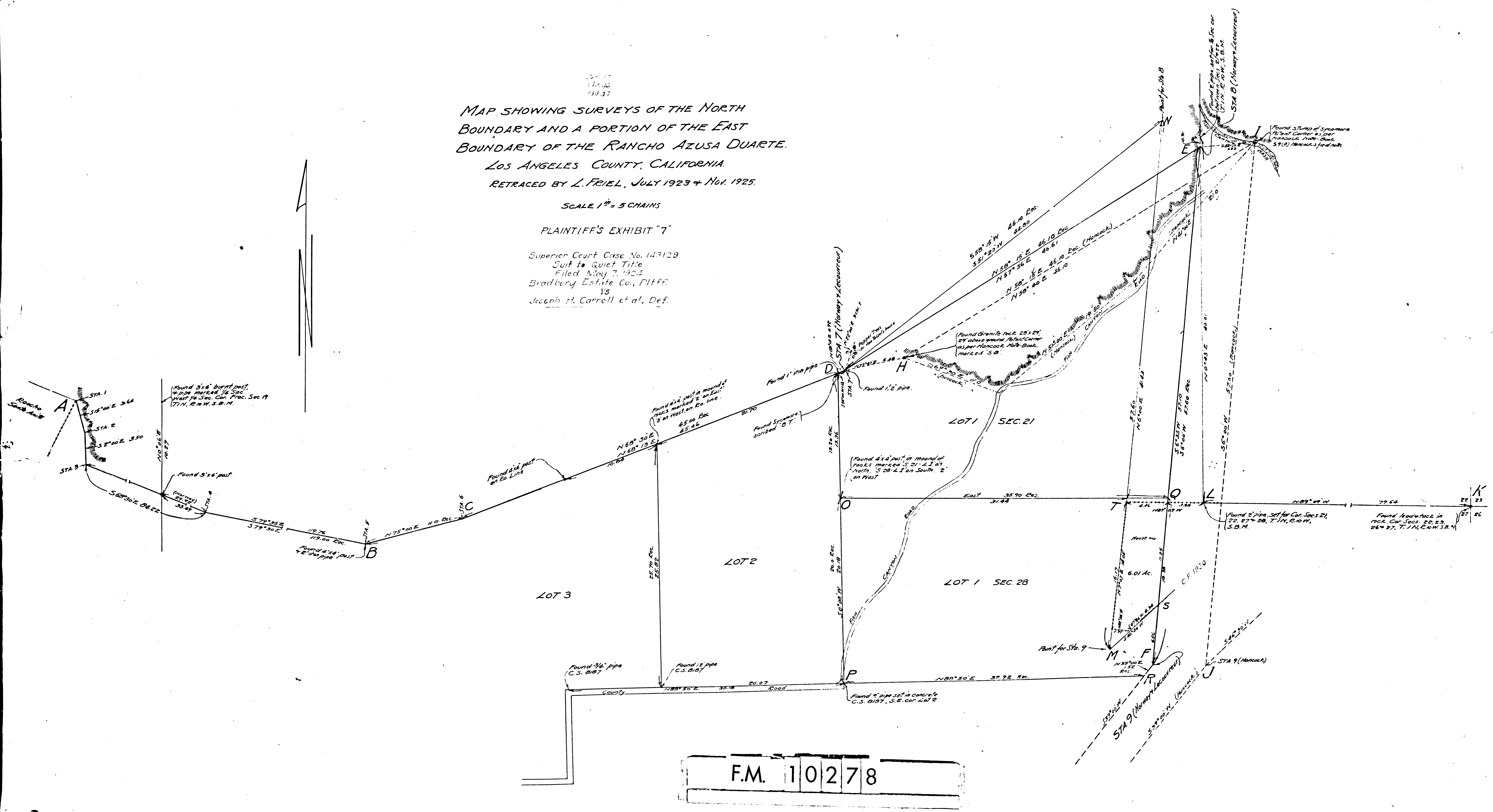


MAP SHOWING SURVEYS OF THE NORTH
 BOUNDARY AND A PORTION OF THE EAST
 BOUNDARY OF THE RANCHO AZUSA DUARTE.
 LOS ANGELES COUNTY, CALIFORNIA.
 RETRACED BY L. FRIEL, JULY 1923 & NOV. 1925.

SCALE 1" = 5 CHAINS

PLAINTIFF'S EXHIBIT "7"

Superior Court Case No. 143129
 Suit to Quiet Title
 Filed May 7, 1924
 Bradbury Estate Co., Plff.
 vs
 Joseph H. Carroll et al., Def.



F.M. 10278