

VINELAND

24

30

36

AVENUE

FRANCISQUITO

25

31

37

EL

BIG DALTON

MONT

PUENTE

D: 68 74-76  
Frank O. Frasier  
Alice H. Frasier also signed  
D: 48-278 O.R. 5168-371

D: O.R. 5321-63  
Maude Reynolds  
W. P. Reynolds also signed  
D: 52-268 O.R. 6034-72

Tr. 2813  
Robert Ellis Ferris  
Loretta Marie Ferris  
D: 52-278 cert. 2813

D: O.R. 66-316  
Ben & Margaritha Tanner  
M: O.R. 5108-120  
Marion & Ethel K. Dillon  
D: 48-292 O.R. 5536-256

D: 4952-125  
James W. Bradford  
Willie A. Bradford  
D: 55-160 O.R. 6047-314

D: 4452-232  
George H. & Lillian Marhart  
T.D. O.R. 5101-212  
T. I. B. T. Comp. (Partl. Recony.)  
D: 52-270 O.R. 6276-2

D: 7057-232  
Z. A. & Bertha E. Gideon  
M: O.R. 3354-395  
Huntley L. Gordon  
D: 52-266 O.R. 6034-102

F.M. 10345

A1 OF A4

FILED IN SAN DIEGO

FILED MAP NO. 10345

42

48

54

60

PL

WALNUT

MERCED

61

D: O.R. 4474-233  
Amude Reynolds  
T.D. O.R. 5232-235  
North American Bond & Mtg. Co.  
W. P. Reynolds also signed  
D: 52-269 O.R. 6034-71

D: O.R. 1193-230  
Estelle M. Rufener  
M: O.R. 177-204  
G.A. & Earle D. Tainter  
Care of Rufener also signed  
D: 52-248 O.R. 5368-146

D: O.R. 3081-22  
Fred & Aroline E. Bacon  
D: 54-14 O.R. 5577-12

D: 723-257  
Lillian M. Herbst  
Anne A. Herbst  
M: 452-309  
William Wendel Johns  
D: 48-243 O.R. 4543-33

D: 5031-135  
H.O. Harris  
Mary V. Harris also signed  
D: 52-34 O.R. 5743-138

D: O.R. 5015-150  
Jdmt. 325-58  
Kathie C. Church  
D: 52-263 O.R. 6032-75

D: 3931-1  
Fannie C. Church  
M: R. 7373  
Heirs of W.K. Church  
D: 52-269 O.R. 6032-74

D: O.R. 3442-175  
Luke P. & Lulu White Hahn  
M: O.R. 4182-73  
Frank Letner  
D: 52-270 O.R. 6265-36

D: O.R. 1930-105  
J.S. Bacon  
Ruth Wallace Bacon  
M: O.R. 1751-501  
T. B. & T. Comp. (Part'l Recony.)  
M: O.R. 1923-123  
James Roy Chase Trustee  
D: 46-200 O.R. 5577-55

D: O.R. 1039-111  
Fred Bacon  
Aroline E. Bacon  
D: 52-14 O.R. 5577-112

D: O.R. 5012-313  
J.S. Bacon  
Ruth Wallace Bacon  
T.D. O.R. 5025-273  
T. B. & T. Comp. (Part'l Recony.)  
D: 48-285 O.R. 5530-250

Note: - In several deeds a R/W is reserved to La Puente Co-operative Water Co. for pipes, ditches, etc. along the boundaries of various lots in this sub-division.  
D: 53-25 O.R. 4636-389

INTE M. B. G, PG. 104

43

49

55

527.56

AVENUE

310.00'

879.10'

881.80'

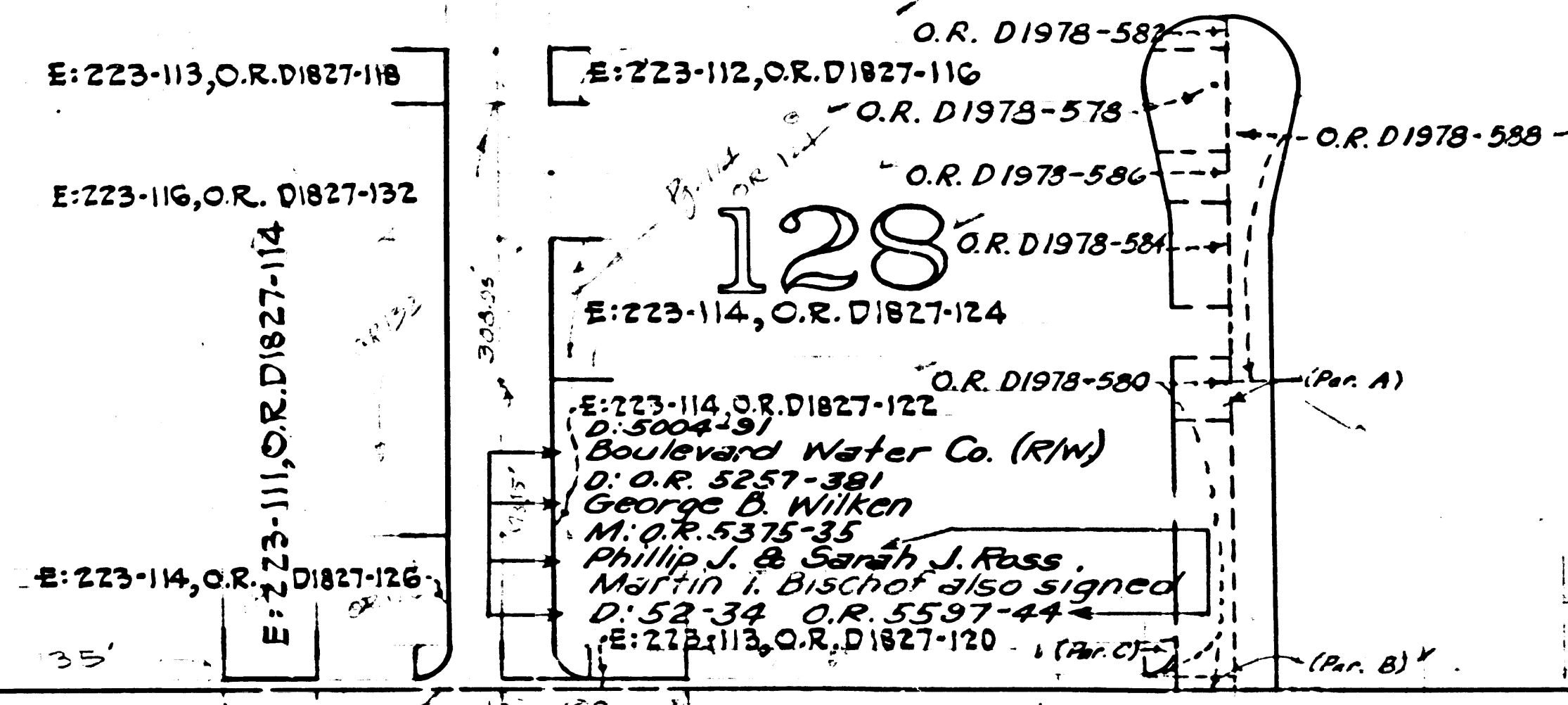
60'

PLACE 66

129

121

962



122

NO. 24-75

- D: 5051-136  
Mary H. Harris also Signed  
D: 52-34 O.R. 5743-138
- D: 5762-336  
John M. Sherman  
D: 52-53 O.R. 5603-83

- D: O.R. 5327-215 and 218  
W. R. Bacon  
M: O.R. 5215-334  
Arthur G. Andrew  
D: 48-243 O.R. 5507-330

- D: 7322-10  
Nelson Taylor  
Rosanna Taylor  
D: 52-23 O.R. 5602-16

- D: O.R. 3232-130  
Fred Lawson  
Elizabeth Lawson  
M: O.R. 5214-333  
T.C. O'Leary  
D: 48-259 O.R. 4559-177

- D: 7139-330  
Walter D. Parker  
Charlene Z. Parker  
D: 5004-31  
Boulevard Water Co. (R/W)  
D: 52-33 O.R. 5555-160

67

127

123

M.B. 21

TRACT

126

125

124

AVENUE

310.00'

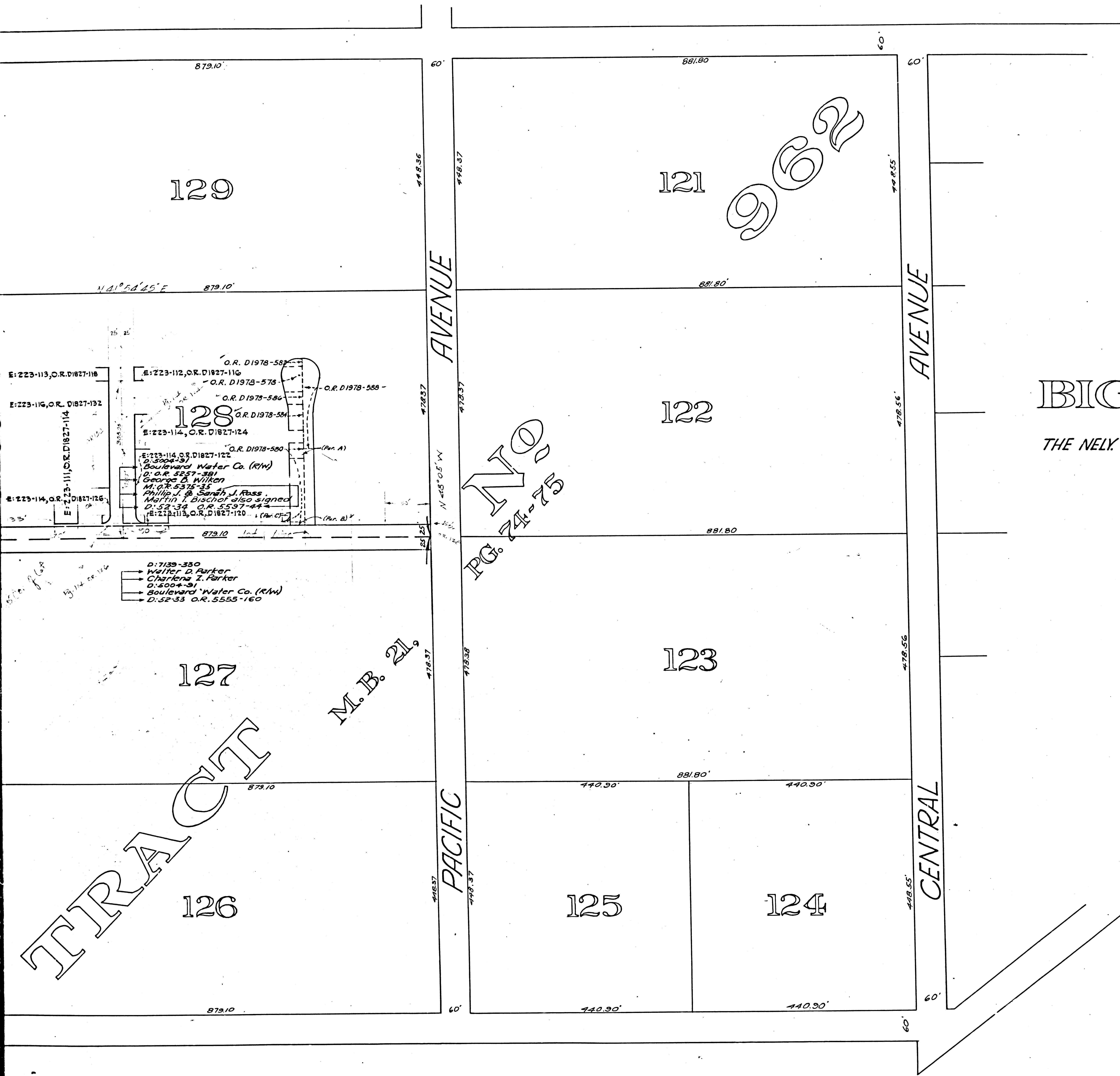
879.10'

440.30'

440.30'

60'

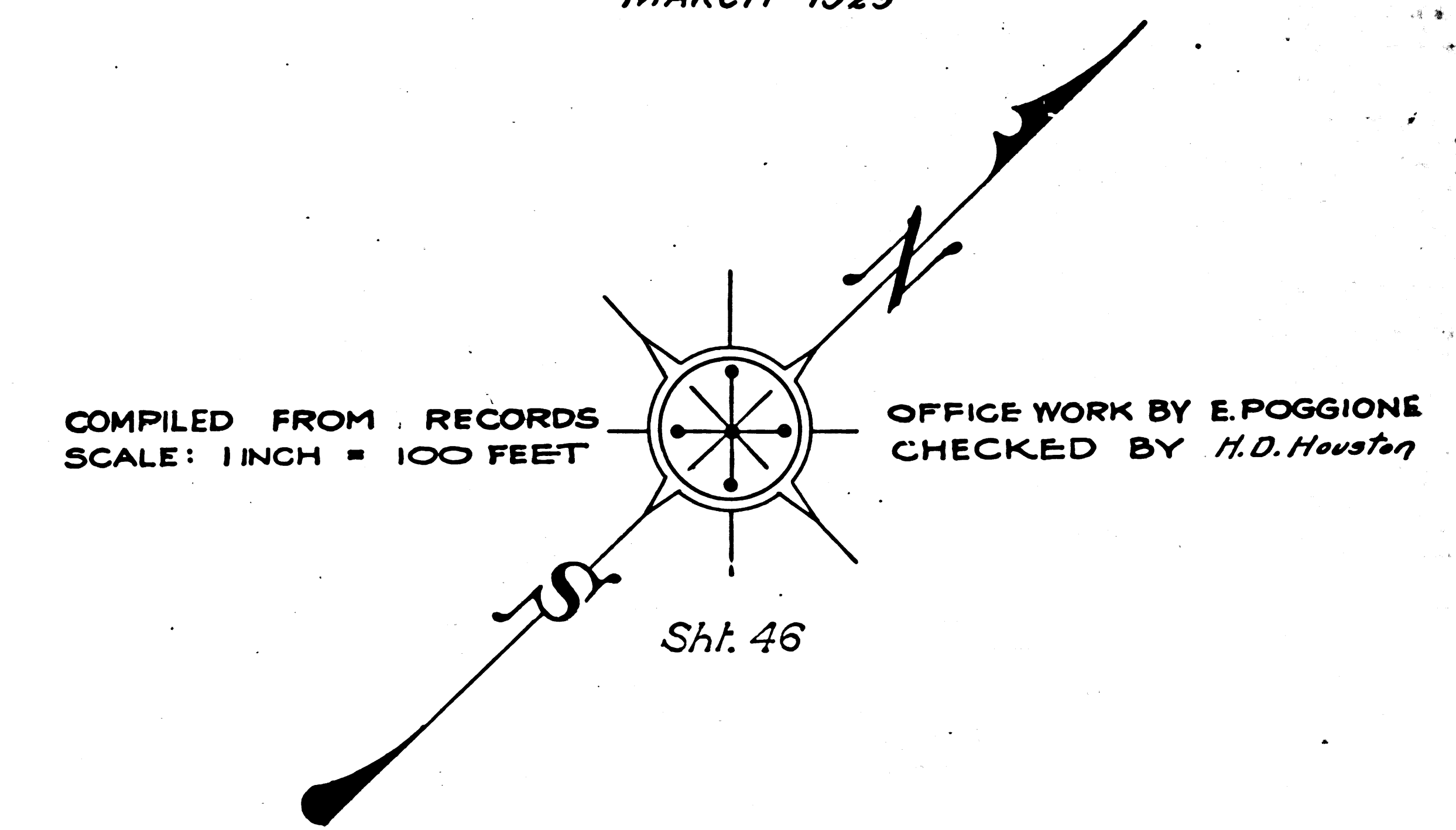
F.M.	1	0	3	4	5
A	3	OF	A	4	



# MAP

SHOWING DEEDS FOR THE OPENING OF  
**BIG DALTON AVENUE**  
 BETWEEN  
 THE NELY. LINE OF FRANCISQUITO AVE & THE SWLY. LINE OF PACIFIC AVE  
 IN THE COUNTY OF LOS ANGELES.

MARCH 1929



FILED MAP NO. 10345

F.M.	1	0	3	4	5
A	4	OF	A	4	

FILED MAP NO. 10345

FILED MAP NO. 10345