

FFD ROAD DIST. NO.	STATE	FFD AD. NO.	FFD YEAR	SHEET NO.	TOTAL SHEETS
2	CAL.				

DIST.	COUNTY	ROUTE	SEC.	SHEET NO.	TOTAL SHEETS
VII	L.A.	23	A	3	

Mint Canyon Rd. changed to Sierra Highway - D:43-156
 STATE RELINQUISHMENT TO COUNTY E:22-219, OR 17995-32 Approved

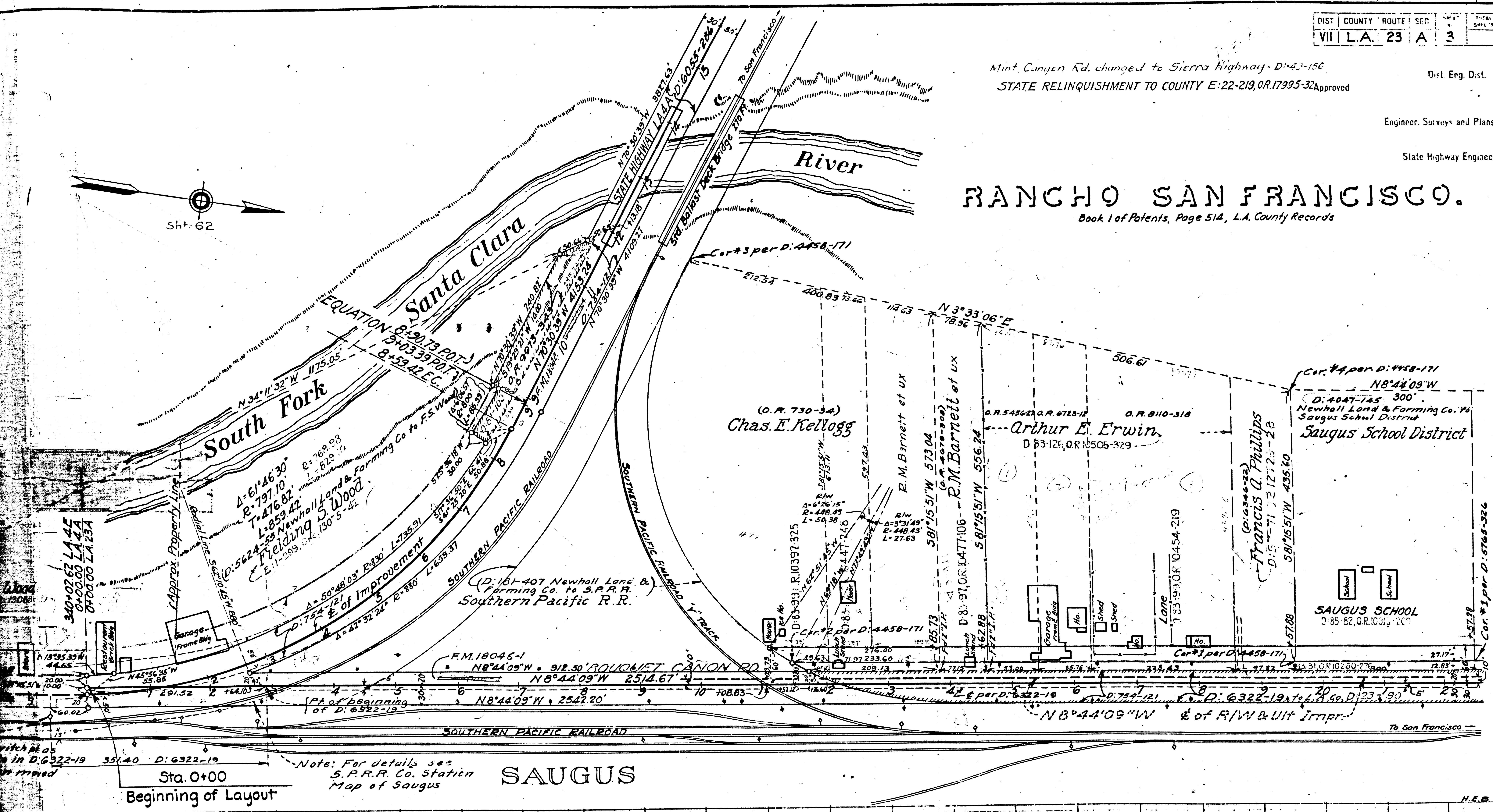
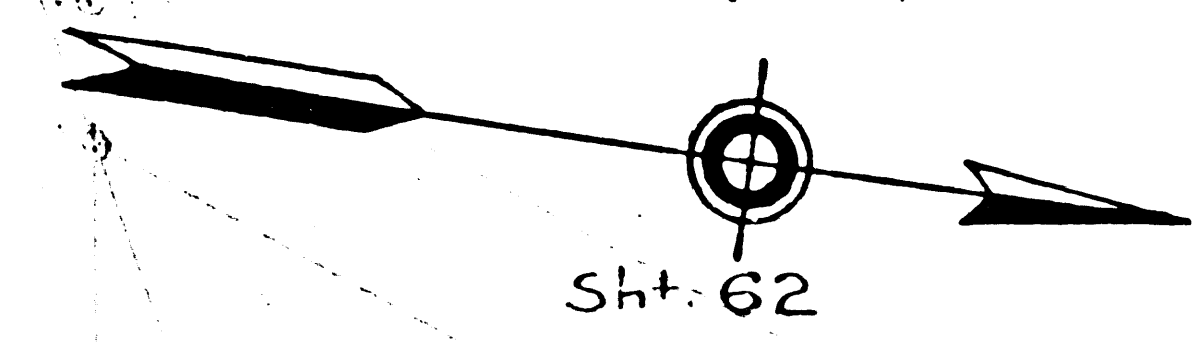
Dist. Eng. Dist.

Engineer, Surveys and Plans.

State Highway Engineer

RANCHO SAN FRANCISCO.

Book 1 of Patents, Page 514, L.A. County Records



IP Ser
 I.P.

Sta. 0+00
 Beginning of Layout

Note: For details see
 S.P.R.R. Co. Station
 Map of Saugus

SAUGUS

F.M. 10548

A1 OF A7

RANCHO SAN FRANCISCO.

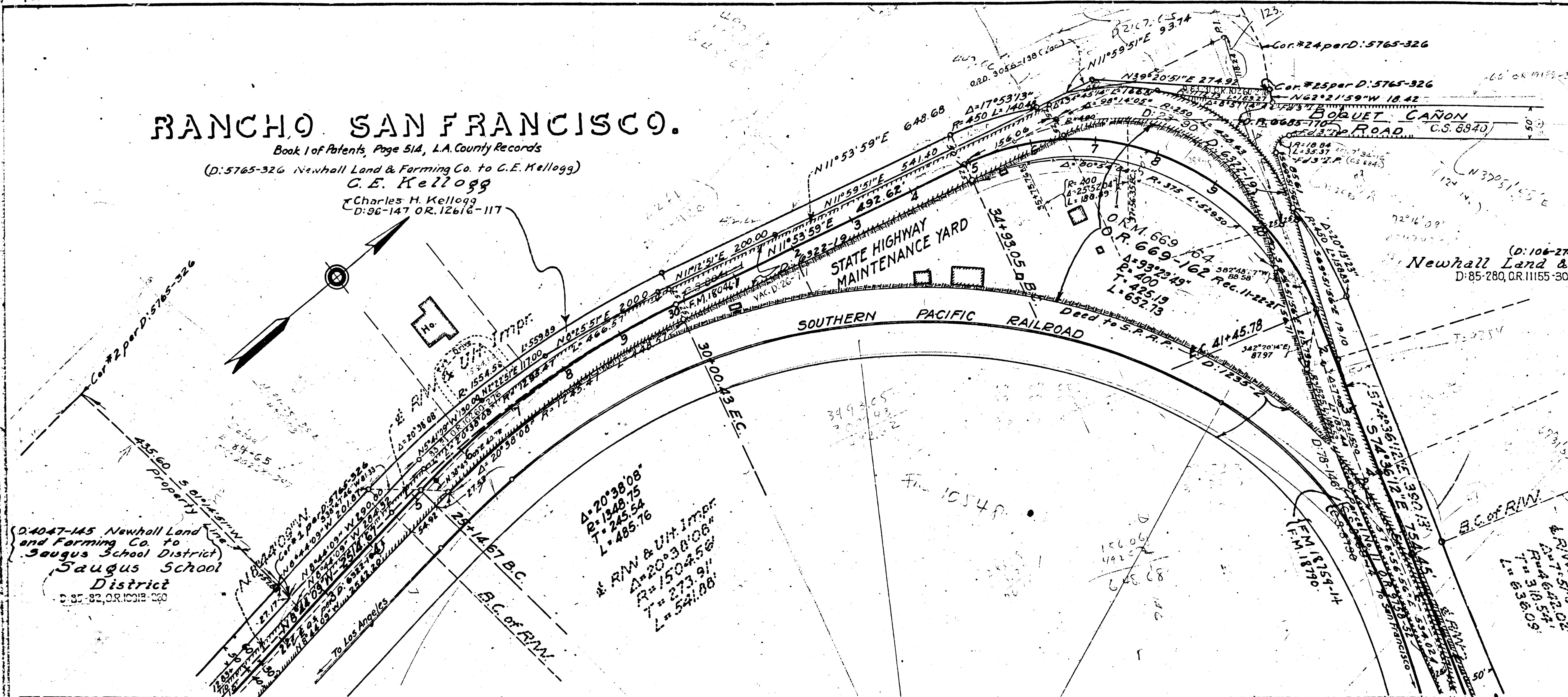
Book 1 of Patents, Page 514, L.A. County Records
 (D:5765-326 Newhall Land & Farming Co. to C.E. Kellogg)
C.E. Kellogg
 Charles H. Kellogg
 D:96-147 OR.12616-117

FID	ROAD	STATE	FID	AD	YEAR	SHEET	TOTAL
2		CAL					

DIST	COUNTY	ROUTE	SEC	SHEET	TOTAL
VII	LA.	23	A	4	

Approved _____
 Dist. Eng. Dist.
 Engineer, Surveys and Plans.
 State Highway Engineer

(D:106-274)
Newhall Land & Farming Co.
 D:85-280, OR.11155-307



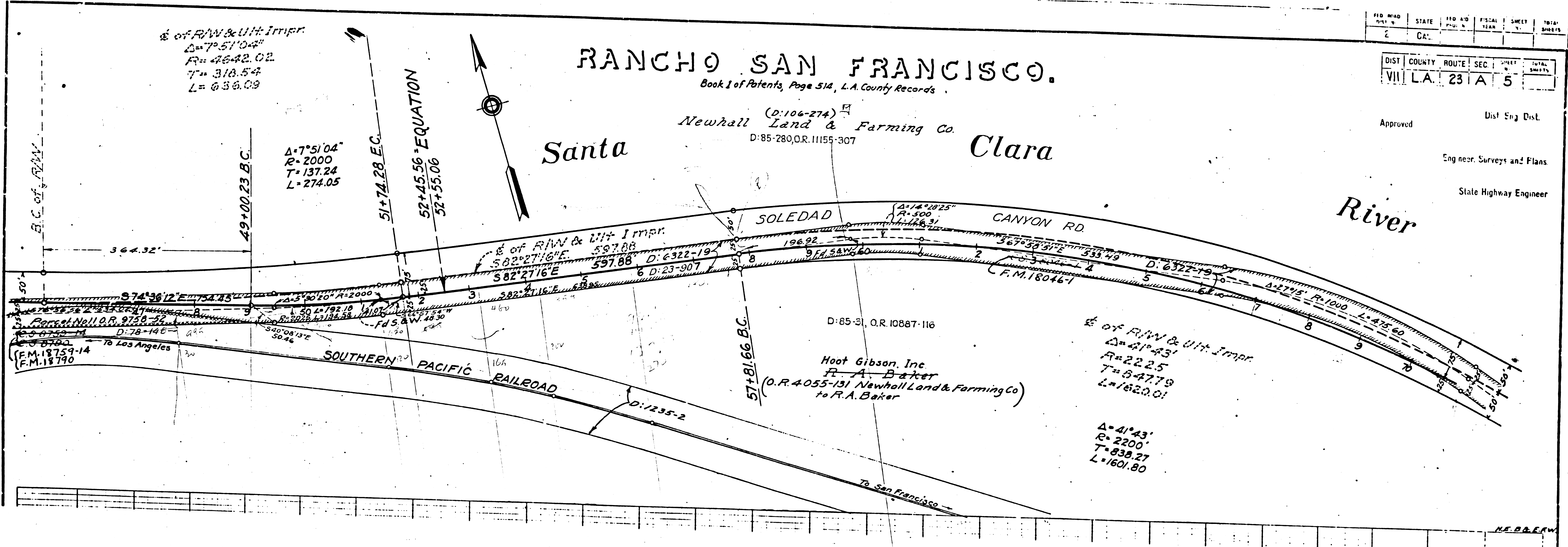
(D:4047-145 Newhall Land & Farming Co. to Saugus School District)
Saugus School District
 District
 D:87-82, OR.10018-230

$\Delta: 20^{\circ}38'08''$
 $R: 1528.75$
 $L: 485.76$
 R.W. & Util. Imp.
 $\Delta: 20^{\circ}38'08''$
 $R: 1504.56$
 $L: 273.91$
 $L: 541.88$

R.W. & Util. Imp.
 $\Delta: 15^{\circ}51'02''$
 $R: 642.02$
 $L: 318.54$
 $L: 636.09$

F.M. 10548
 A2 OF A7

CONTINUED



RANCHO SAN FRANCISCO.
Book 1 of Patents, Page 514, L.A. County Records.

(D:106-274)
Newhall Land & Farming Co.
 D:85-280, O.R. 11155-307

Santa

Clara

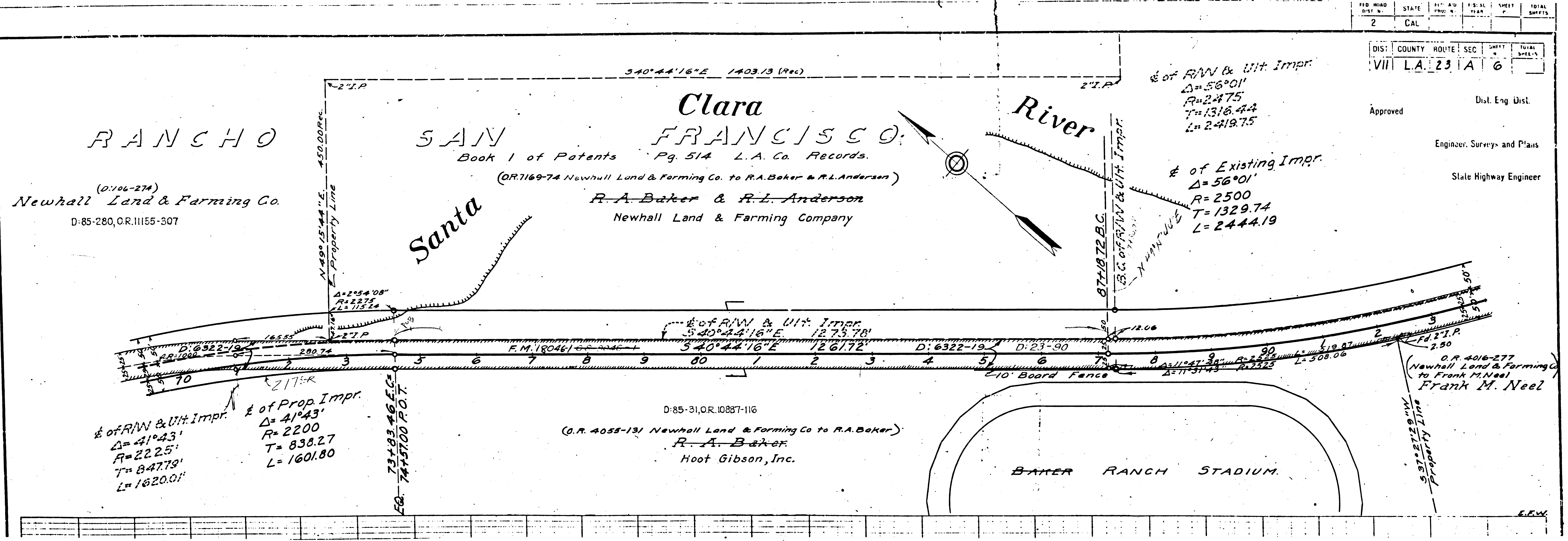
River

FED. ROAD DIST. NO.	STATE	FED. AID FUND NO.	FISCAL YEAR	SHEET NO.	TOTAL SHEETS
2	CA.				

DIST.	COUNTY	ROUTE	SEC.	SHEET	TOTAL SHEETS
VII	LA.	23	A	5	

Approved _____
 Dist. Eng. Dist.
 Eng. near. Surveys and Plans
 State Highway Engineer

F.M. 10548
 A3 OF A7



FED. ROAD DIST. NO.	STATE	RTE. NO.	SECTION	SHEET	TOTAL SHEETS
2	CAL.				

DIST.	COUNTY	ROUTE	SEC.	SHEET	TOTAL SHEETS
VII	L.A.	23	A	6	

Approved _____
 District Engineer
 Engineer, Surveys and Plans
 State Highway Engineer

F.M. 10548
 A4 OF A7

FED. ROAD DIST. N.	STATE	FED. AD. DIST. N.	F.S.N. N.	SHEET N.	TOTAL SHEETS
2	CAL.				

DIST.	COUNTY	ROUTE	SEC.	SECTION
VII	L.A.	23	A	7

Approved _____
Dist. Eng. Dist.

Engineer, Surveys and Plans

State Highway Engineer

RANCHO

SAN FRANCISCO

Book 1 of Patents Pg. 514 L.A. Co. Records

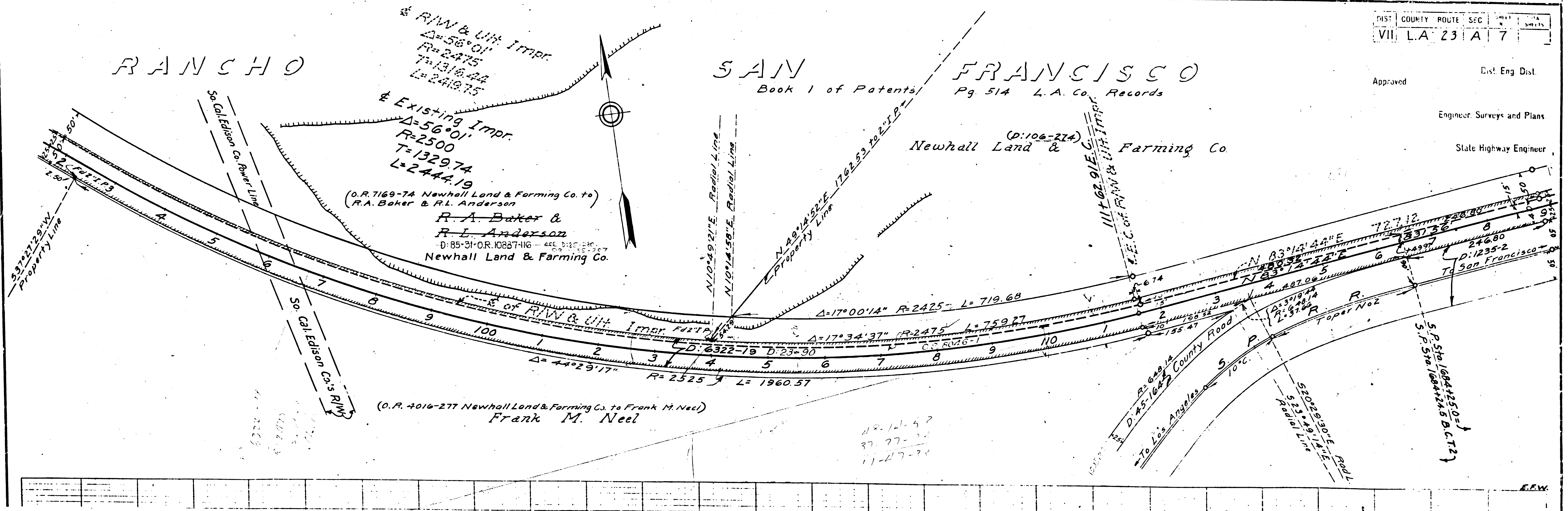
Newhall Land & Farming Co.

& R/W & Util. Impr.
 $\Delta=56^{\circ}01'$
 $R=2475$
 $T=1316.44$
 $L=2419.75$

& Existing Impr.
 $\Delta=56^{\circ}01'$
 $R=2500$
 $T=1329.74$
 $L=2444.19$

(O.R. 7169-74 Newhall Land & Farming Co. to R.A. Baker & R.L. Anderson)
R.A. Baker & R.L. Anderson
D: 85-31 O.R. 10887-116

(O.R. 4016-277 Newhall Land & Farming Co. to Frank M. Neel)
Frank M. Neel



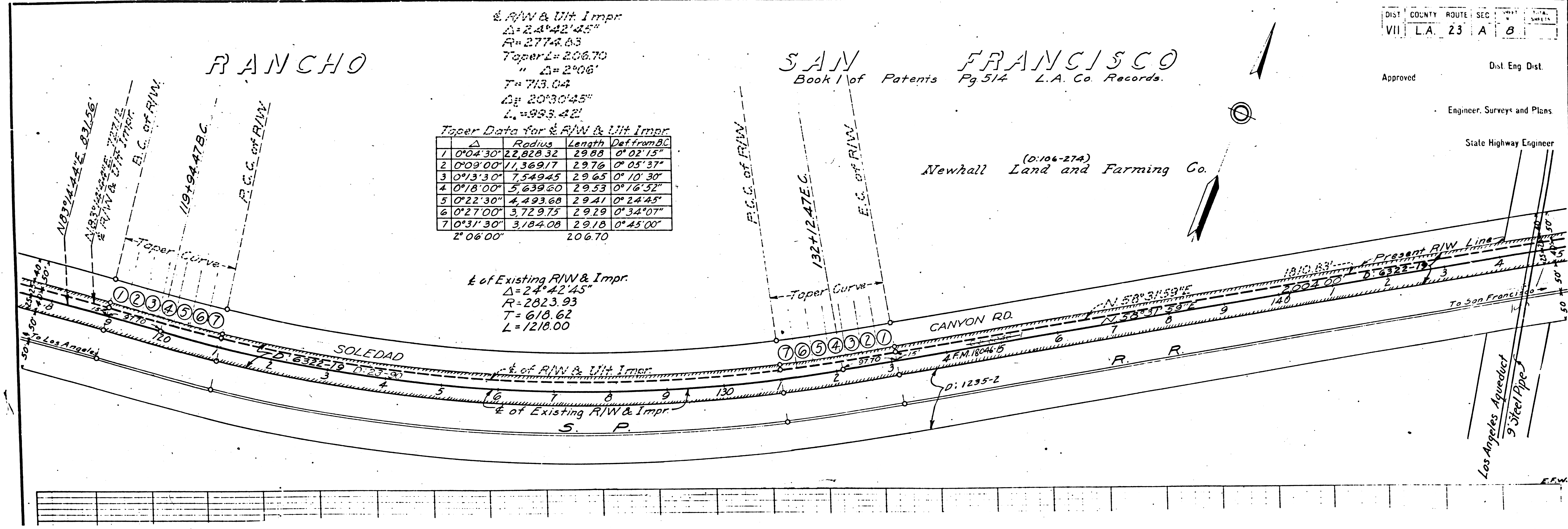
F.M. 10548
A5 OF A7

Order # 70213

DIST	COUNTY	ROUTE	SEC	SHEETS	TOTAL SHEETS
2	CAL				

DIST	COUNTY	ROUTE	SEC	SHEETS	TOTAL SHEETS
VII	L.A.	23	A	8	

Approved _____
 Dist. Eng. Dist.
 Engineer, Surveys and Plans
 State Highway Engineer



of R/W & Ut Impr
 $\Delta = 24^\circ 42' 45''$
 $R = 2774.83$
 $Taper L = 206.70$
 $T = 713.04$
 $L = 993.42'$

Taper Data for E of R/W & Ut Impr

Δ	Radius	Length	Def from BC
1 0°04'30"	22,828.32	29.88	0° 02' 15"
2 0°09'00"	11,369.17	29.76	0° 05' 37"
3 0°13'30"	7,549.45	29.65	0° 10' 30"
4 0°18'00"	5,639.60	29.53	0° 16' 52"
5 0°22'30"	4,493.68	29.41	0° 24' 45"
6 0°27'00"	3,729.75	29.29	0° 34' 07"
7 0°31'30"	3,184.08	29.18	0° 45' 00"
2° 06' 00"		206.70	

E of Existing R/W & Impr
 $\Delta = 24^\circ 42' 45''$
 $R = 2823.93$
 $T = 618.62$
 $L = 1218.00$

(0:106-274)
 Newhall Land and Farming Co.

F.M. 10548

A6 OF A7

Order # 10213

RANCHO

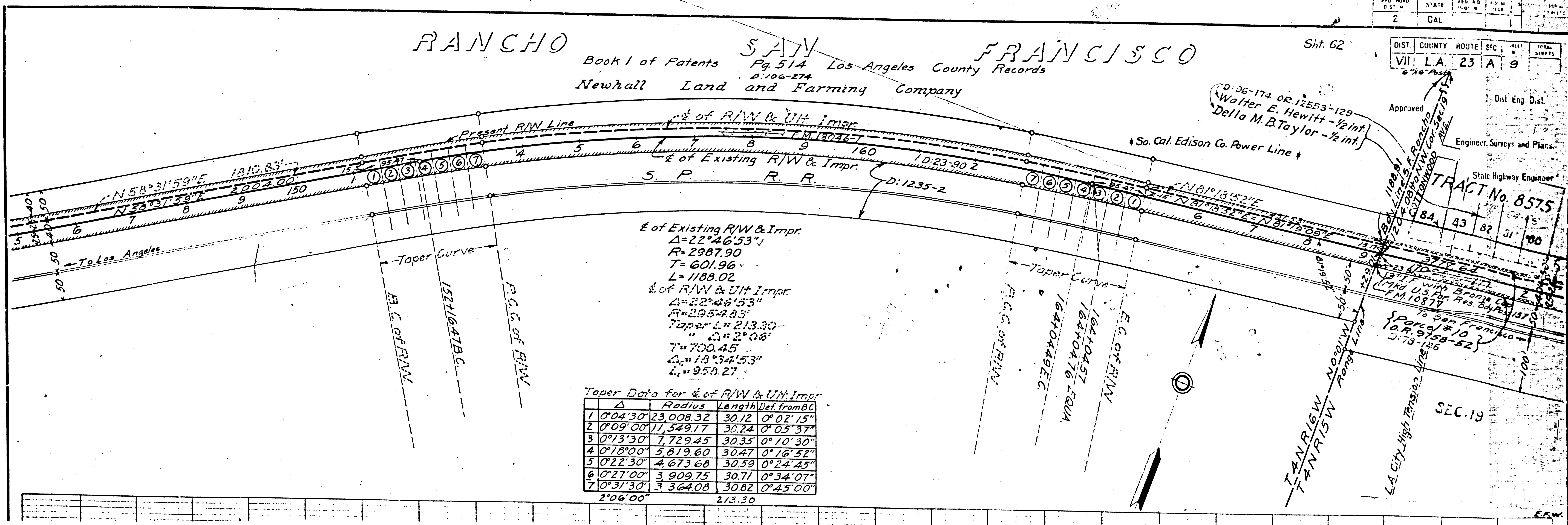
SAN

FRANCISCO

Book 1 of Patents Pg. 514 Los Angeles County Records
 D:106-274
 Newhall Land and Farming Company

Sht. 62

DIST	COUNTY	ROUTE	SEC	BLK	TOTAL SHEETS
VII	L.A.	23	A	9	



$\Delta = 22^\circ 46' 53''$
 $R = 2987.90$
 $T = 601.96$
 $L = 1188.02$
 $\Delta = 22^\circ 46' 53''$
 $R = 2987.90$
 $T = 601.96$
 $L = 1188.02$
 $\Delta = 18^\circ 34' 53''$
 $R = 958.27$

Taper Data for Δ of R/W & UH Impr.

Δ	Radius	Length	Def. from BC
1 $0^\circ 04' 30''$	23,008.32	30.12	$0^\circ 02' 15''$
2 $0^\circ 09' 00''$	11,549.17	30.24	$0^\circ 05' 37''$
3 $0^\circ 13' 30''$	7,729.45	30.35	$0^\circ 10' 30''$
4 $0^\circ 18' 00''$	5,819.60	30.47	$0^\circ 16' 52''$
5 $0^\circ 22' 30''$	4,673.68	30.59	$0^\circ 24' 45''$
6 $0^\circ 27' 00''$	3,909.75	30.71	$0^\circ 34' 07''$
7 $0^\circ 31' 30''$	3,364.08	30.82	$0^\circ 45' 00''$
$2^\circ 06' 00''$		213.30	

TRACT No. 8575

SEC. 19

F.M. 10548
 A7 OF A7