

F.M. 10556
A1 OF A2

PROPERTY

OF

THE

LANKERSHIM

RANCH

TRACT NO. 6982

TRACT NO. 2198

TRACT NO. 2514

TRACT NO. 2763

TRACT NO. 3044

TRACT NO. 610-B

M.B. 29

SOUTHERN PACIFIC RAILROAD COMPANY

Fractional Lot 1
Map, Book 77, Page 75

Part of Lot 49

Fractional Lot 68

Board of Public Service Commissioners of L.A. City
Quitted to City of L.A. (Water & Power Dept)
D.81-155, O.R. 64773-116
69

Quitted to City of L.A. (Water & Power Dept)
D.81-107, O.R. 2704-81

Wormen Sand and Gravel Co.
D.84-151, O.R. 10855-100

Richard G. Bullis
D.78-213, O.R. 10160-30

Miscellaneous Records, Book 31, Pages 39

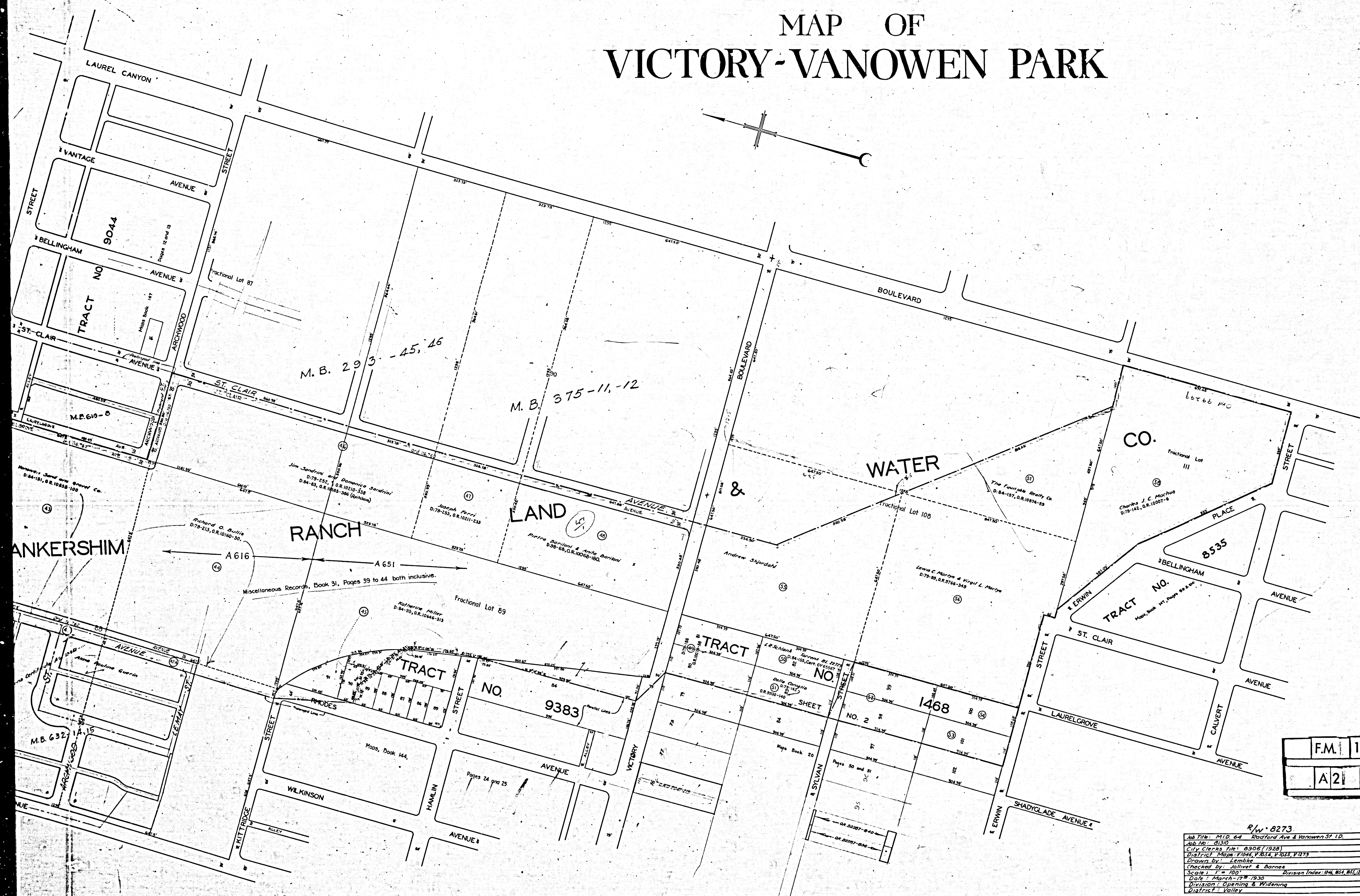
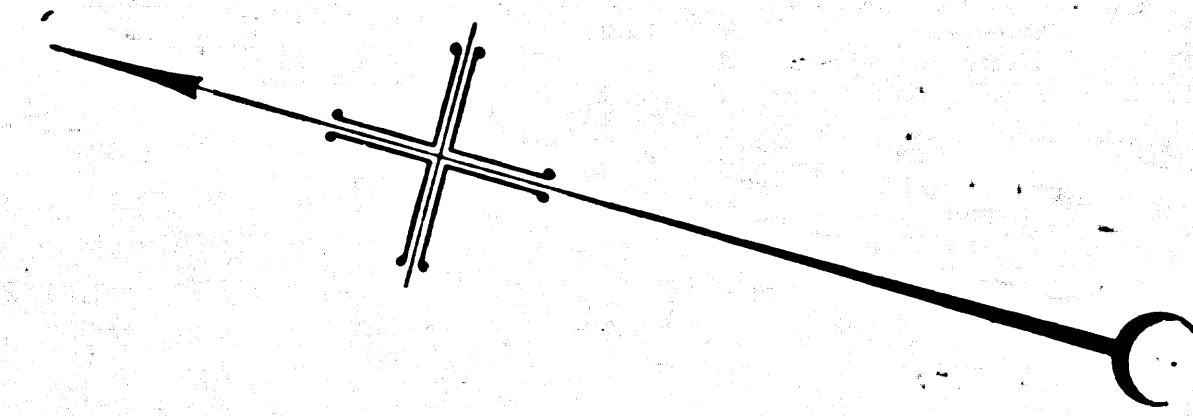
Jim Sanford and Dames & Moore
D.78-192, O.R. 10210-158
D.84-45, O.R. 10858-306 (Part)

Torrens Certificate
Alma Pauline Guerin

M.B. 632

WILKINSON

MAP OF VICTORY-VANOWEN PARK



F.M.	10556
A21	OF A 21

R/W 8273

Job File:	M10-64	Radford Ave & Vanowen St. I.D.
Map No.:	8130	
City Clerk's file:	0306 (1928)	
District Maps:	Files P. 1014, P. 1015, P. 1017	
Drawn by:	W. B. B. B.	
Checked by:	W. B. B. B.	
Scale:	1" = 100'	Division Index: 104, 105, 107
Date:	March-17-1930	
Division:	Opening & Widening	
District:	Valley	