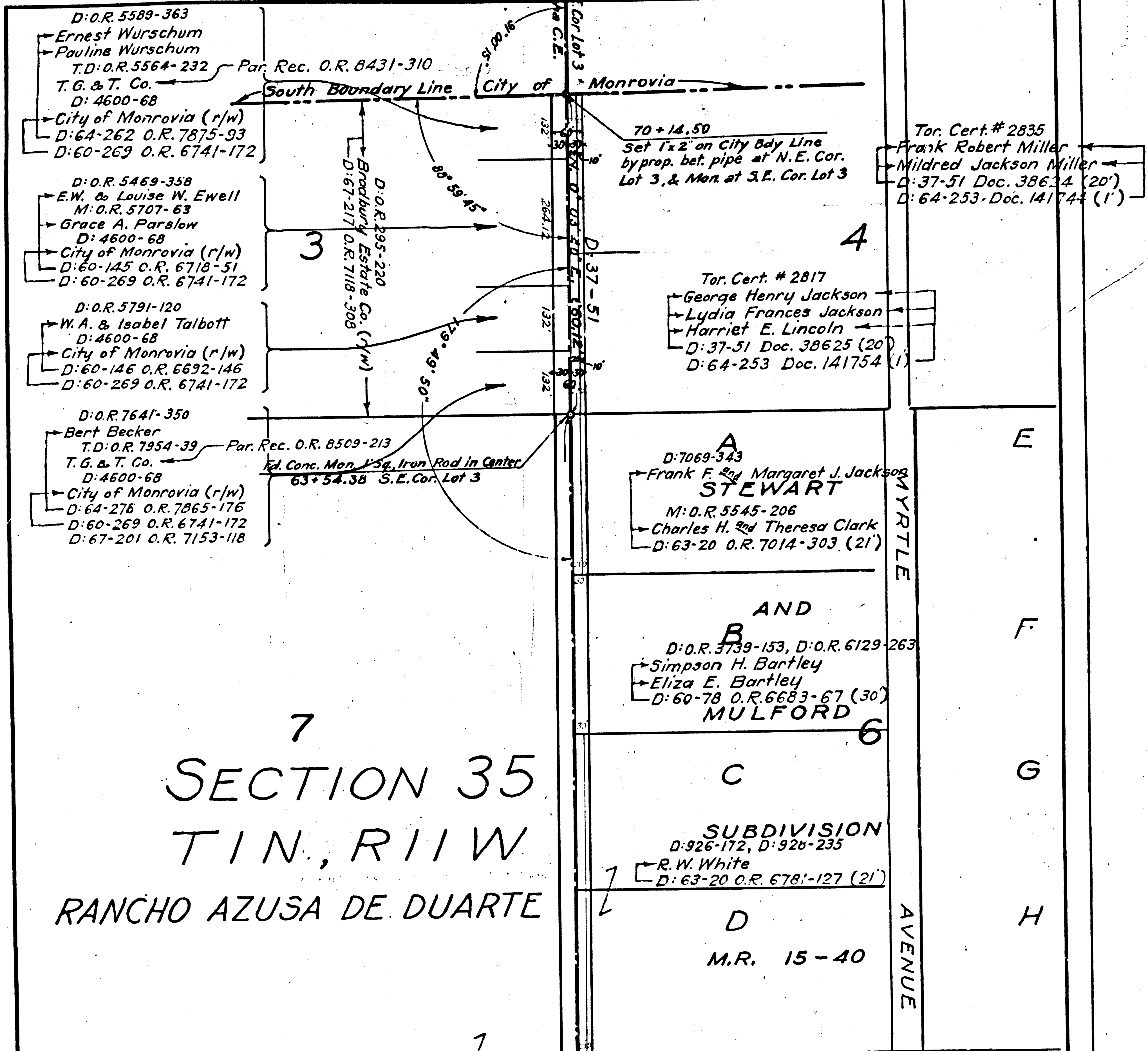


C 11 789 - BECK BOVD - DEED W/VB



7
SECTION 35
T1N, R11W
RANCHO AZUSA DE DUARTE

F.M. 110589
A 1 OF A 2

D: 2047-129, D: 2042-62, D: 2140-136
Bradbury Estate Co.
D: 4600-68
City of Monrovia
M: O.R. 6577-140
Mary E. Cafes
Edna Bicknell Bagg
D: 60-144 O.R. 6638-303
D: 60-269 O.R. 6741-172
D: 76-95 C.R. 9301-41
D: 64-279 O.R. 7129-1

D: O.R. 3579-347
Edgar E. McDowell
D: O.R. 3579-348
Emma E. McDowell
D: 63-20 O.R. 7038-159 (21')

M: 3-245

Fd. 2" Pipe, hub and tack
29 + 91.58 N.W. Cor. Lot 1

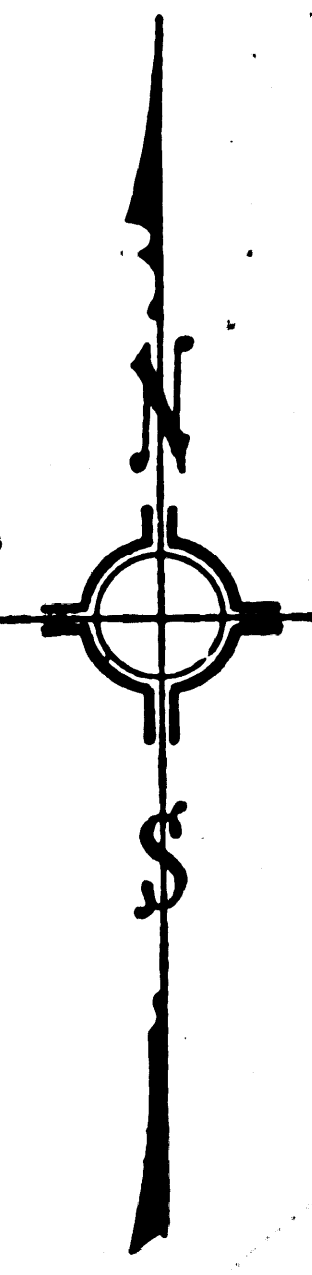
I. H. POLK

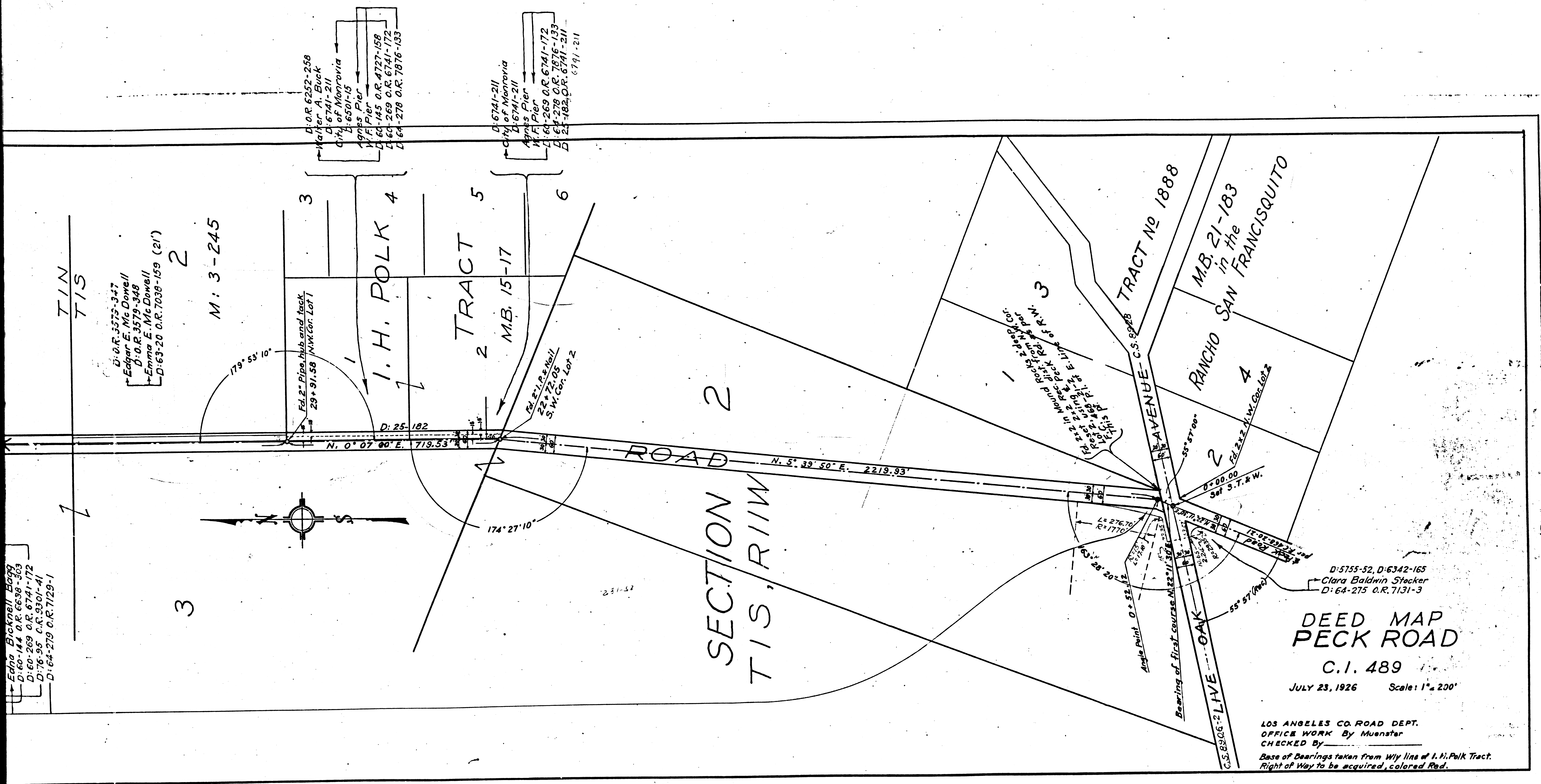
TRACT 5

M.B. 15-17

D: O.R. 6252-258
Walter A. Buck
D: 5741-211
City of Monrovia
D: 6501-15
Agnes Pier
W.F. Pier
D: 60-145 O.R. 4727-158
D: 60-269 O.R. 6741-172
D: 64-278 O.R. 7876-133

D: 6741-211
City of Monrovia
D: 6741-211
Agnes Pier
W.F. Pier
D: 60-269 O.R. 6741-172





C.I. 489-PECK ROAD-DEED MAP

Shf. 46

F.M.	10	589
A 2	OF	A 2