

1130

2658.42

53.57  
1428.45

Coal Canyon Road

C.S. B-126-2

This alignment not adopted as final - 8/5/32  
Sewell - Road Dept

Section Corner  
Sandstone Road

Section Corner  
C.S. Monument Set

PROPERTY OF  
EDWARD L. BLINCOE

PROPERTY OF  
JOSEPH A. PIUMA

PROPERTY OF  
MATHEW MASTEN

P.O.R. 4027-227  
Mathew L. Masten  
D: 67-214, O.R. 11639-372

D: O.R. 4879-19  
Edward Lee Blincoe  
M: O.R. 9857-321  
Benjamin F. Field  
D: 89-106, O.R. 11840-241

Dec: O.R. 11448-238  
D: O.R. 11436-235  
Edward Lee Blincoe  
D: 87-215, O.R. 11273-333

D: O.R. 6501-194  
Joseph A. Piura  
D: 87-217, O.R. 11671-18

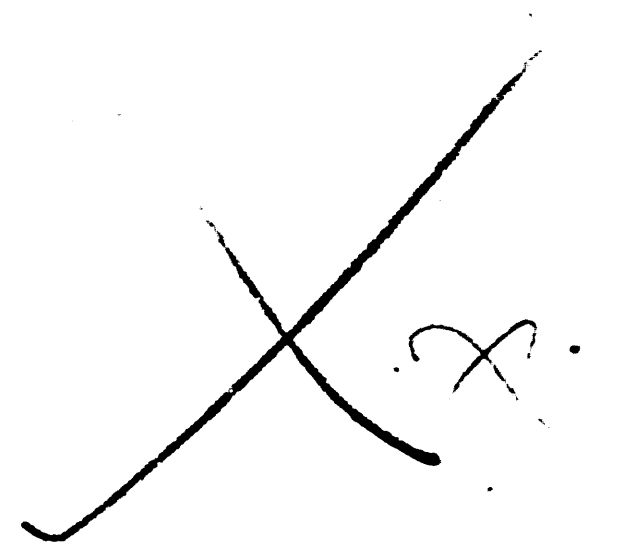
P: O.R. 4027-227  
Mathew L. Masten  
E: 3-267, O.R. 13338-397

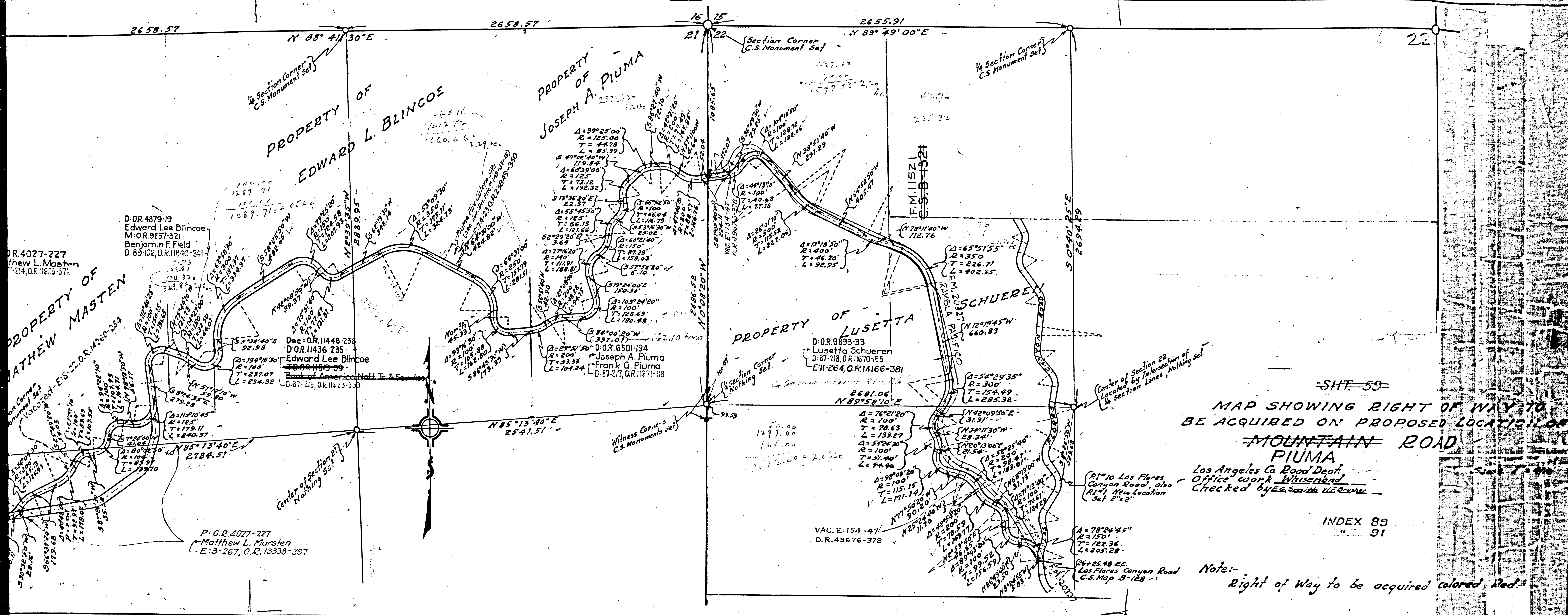
Section Corner  
C.S. Monument Set

Center of Section  
Nothing Set

Witness Corners  
C.S. Monuments Set

F.M.	1	0	5	9	1
A	1	OF	A	2	





SHT 59  
 MAP SHOWING RIGHT OF WAY TO  
 BE ACQUIRED ON PROPOSED LOCATION OF  
 MOUNTAIN ROAD  
 PIUMA

Los Angeles Co. Road Dept.  
 Office work Whisenand  
 Checked by E.S. Smith U.S. Engineer

INDEX 89  
 " 91

Note:  
 Right of Way to be acquired colored Red

F.M. 10591  
 A 2 OF A 2