

16

SEC 15

NE 1/4 of SE 1/4, Sec. 16

SE 1/4 of SE 1/4, Sec. 16

SUPPLEMENTAL PLAT
SHOWING
TRAVERSES IN SECTIONS 21 AND 22
AND
LINE USED TO ESTABLISH
EAST LINE OF SECTION 16

Location of controlling points of survey obtained from
Los Angeles County Road Department. Map showing
Fish Canyon Quarry Site and proposed location of
road and railroad from Pacific Electric Railroad at
Los Lomas to Quarry Site.
Scale = 1 in. = 400 ft.

MAP SHOWING
Camp Sites and Cabins
LOCATED IN

FISH CANYON.

IN SECTION 16, T. 1 N., R. 10 W., S. 31 M.

Surveyed under direction of

W. S. KINGSBURY STATE SURVEYOR GENERAL

By W. S. Kingsbury, Jr.

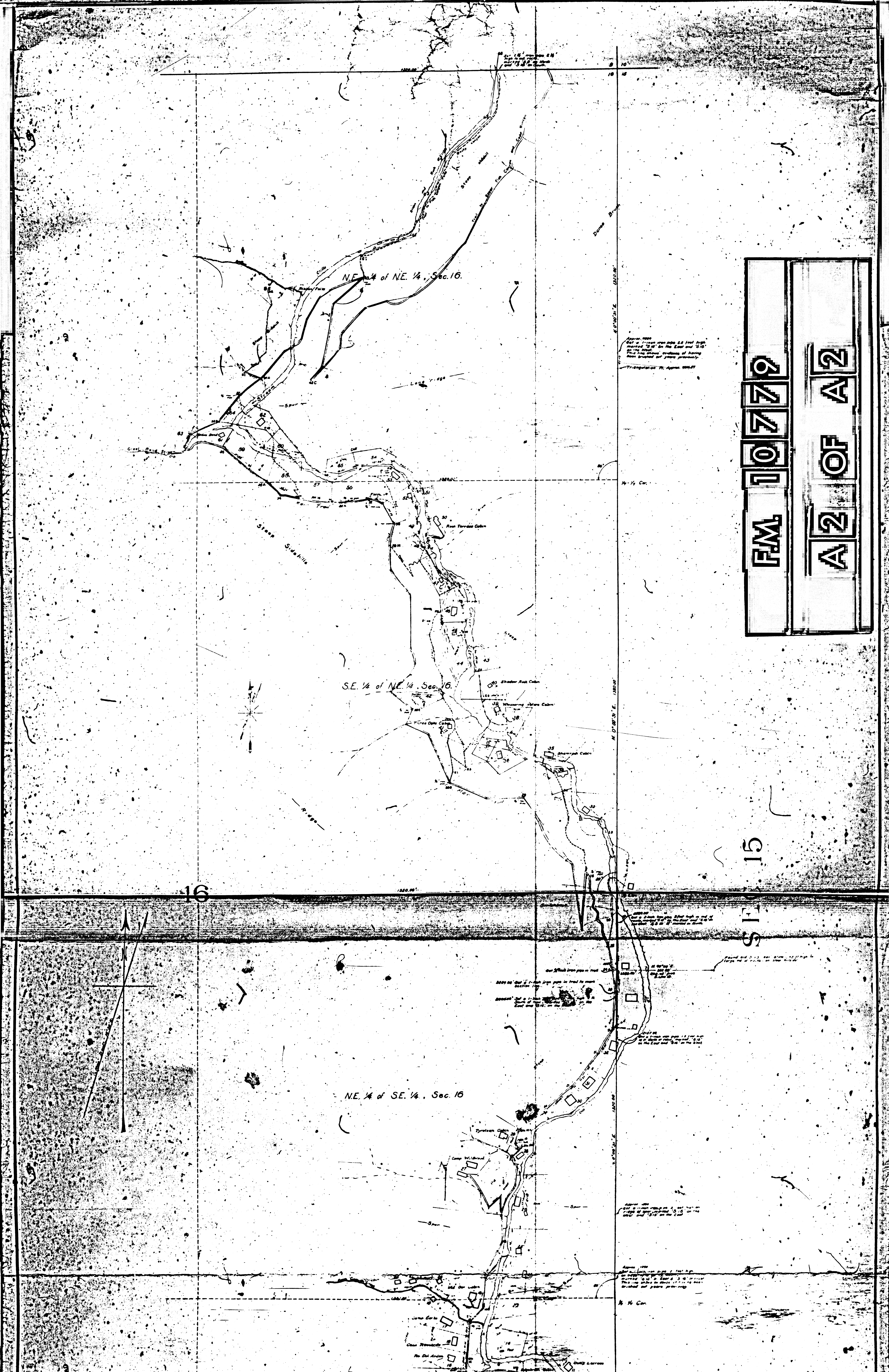
Map July, August, 1922

May 1924, Jan. 1925

FM 10779
A1 OF A2

SAN GABRIEL WASH

47
311 13



F.M. 10779
A2 OF A2

15
16

NE 1/4 of NE 1/4, Sec. 16.

SE 1/4 of NE 1/4, Sec. 16.

NE 1/4 of SE 1/4, Sec. 16.

Approx. 1880
Map of 1880 was made by Fred W. ...
marked 10 40 on the East and 50 on the West.
But the above evidence of having been located for years past.

Approx. 1880
Map of 1880 was made by Fred W. ...
marked 10 40 on the East and 50 on the West.
But the above evidence of having been located for years past.

Approx. 1880
Map of 1880 was made by Fred W. ...
marked 10 40 on the East and 50 on the West.
But the above evidence of having been located for years past.

Approx. 1880
Map of 1880 was made by Fred W. ...
marked 10 40 on the East and 50 on the West.
But the above evidence of having been located for years past.