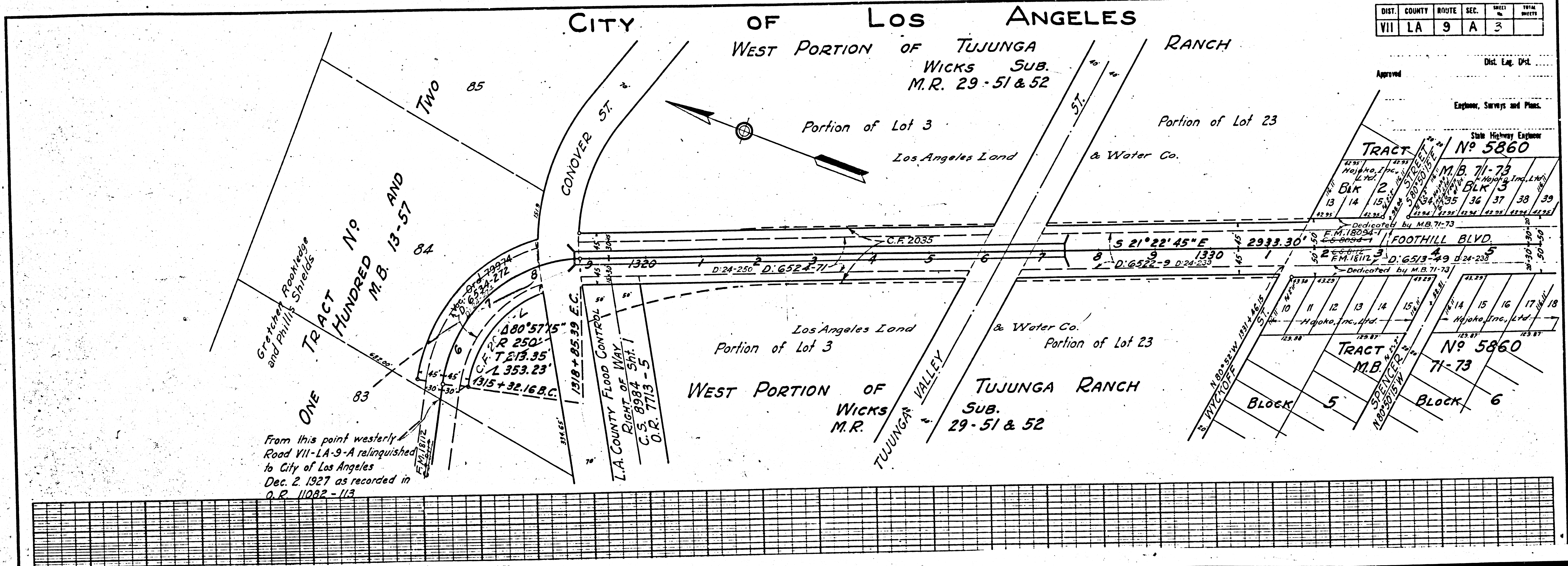


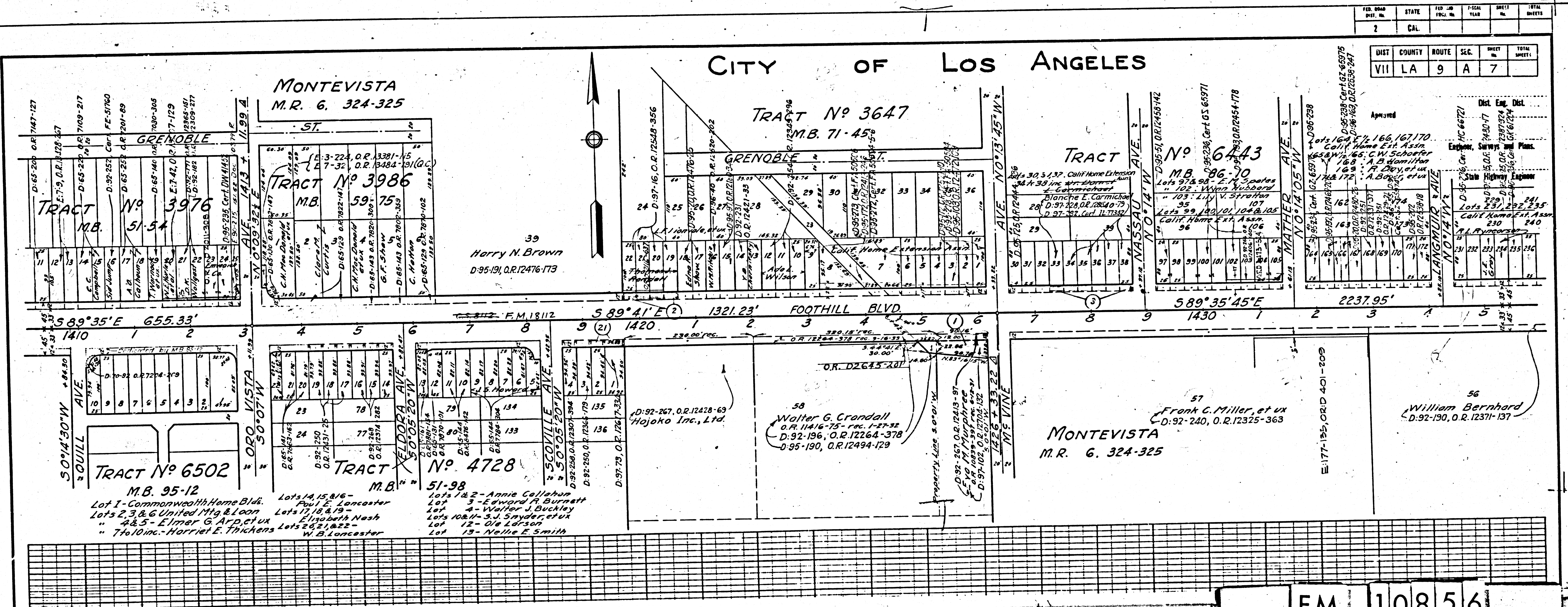
DIST.	COUNTY	ROUTE	SEC.	SHEET	TOTAL SHEETS
VII	LA	9	A	3	



DIST.	COUNTY	ROUTE	SEC.	SHEET	TOTAL SHEETS
VII	LA	9	A	3	

FED. ROAD DIST. NO.	STATE	FED. OR STATE	YEAR	SHEET NO.	TOTAL SHEETS
2	CAL.				

DIST.	COUNTY	ROUTE	SEC.	SHEET	TOTAL SHEETS
VII	LA	9	A	7	



FED. ROAD DIST. NO.	STATE	FED. OR STATE	YEAR	SHEET NO.	TOTAL SHEETS
2	CAL.				

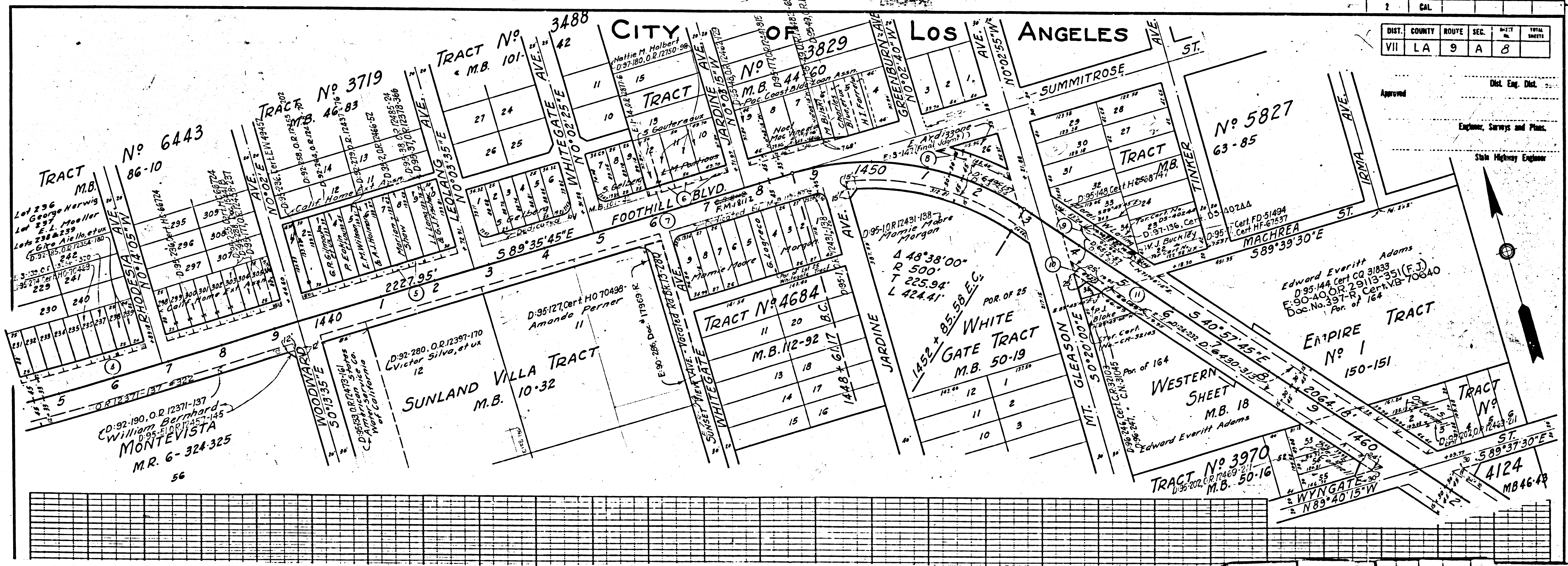
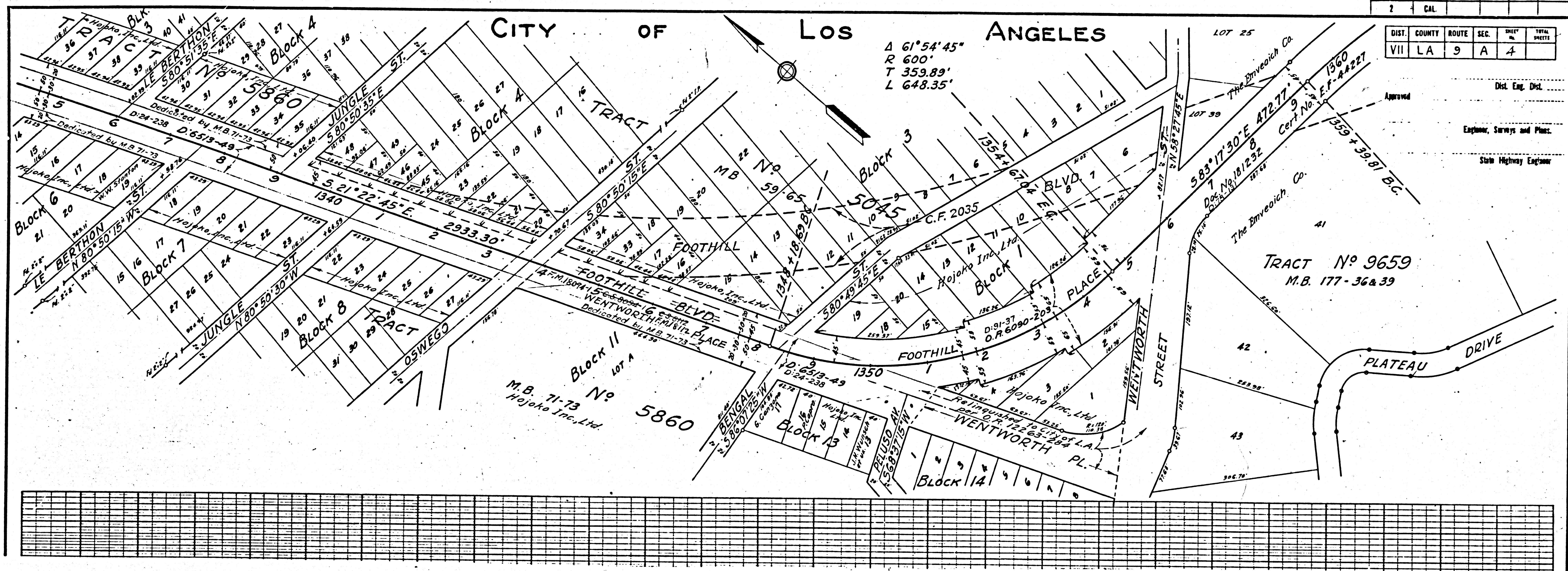
DIST.	COUNTY	ROUTE	SEC.	SHEET	TOTAL SHEETS
VII	LA	9	A	7	

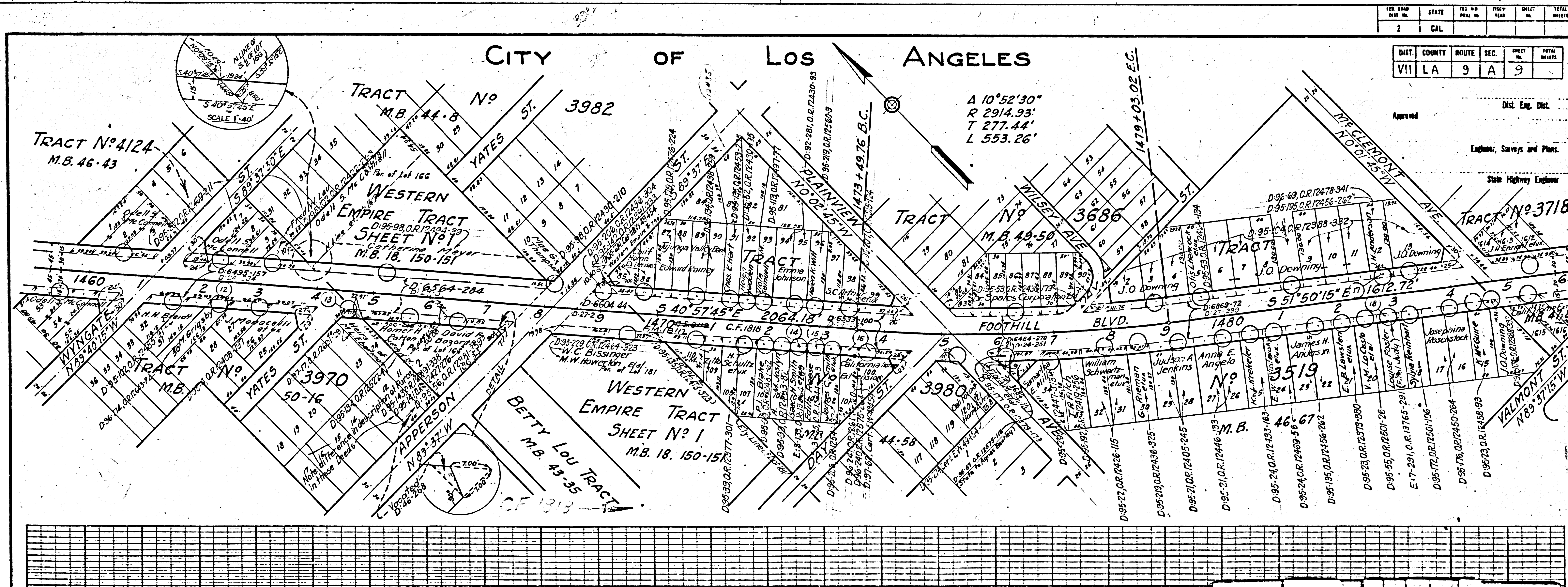
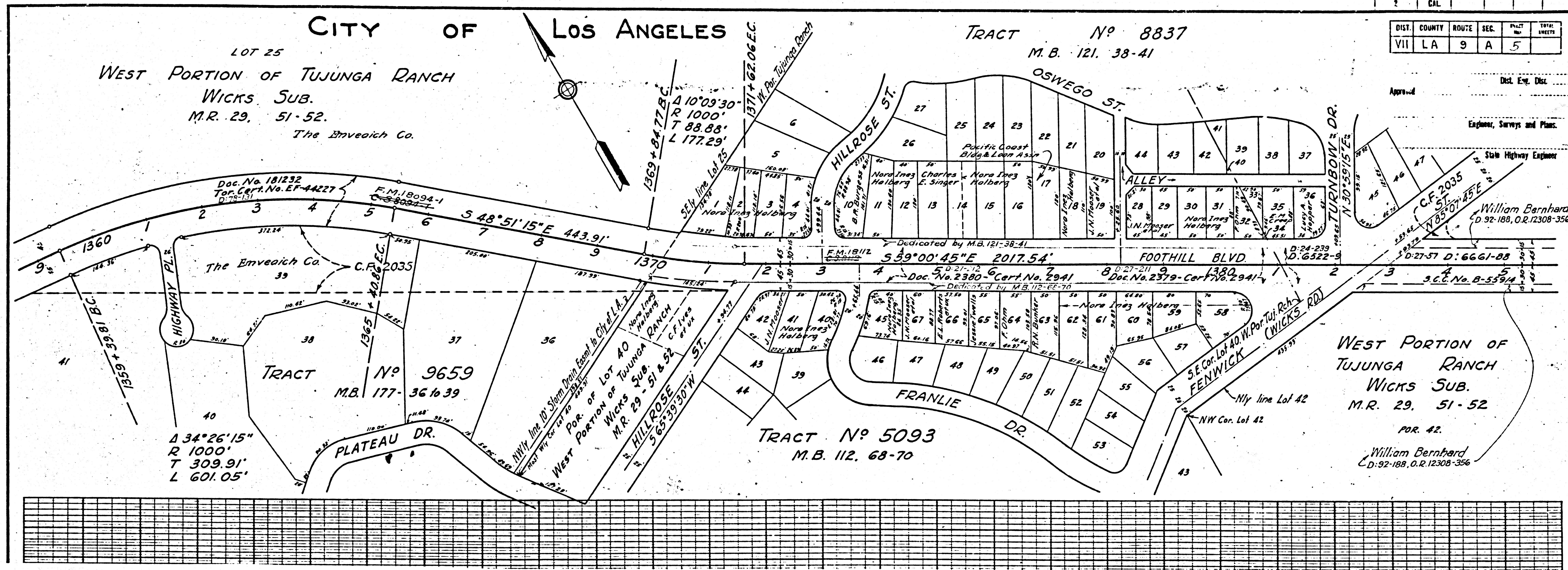
FED. ROAD DIST. NO.	STATE	FED. OR STATE	YEAR	SHEET NO.	TOTAL SHEETS
2	CAL.				

DIST.	COUNTY	ROUTE	SEC.	SHEET	TOTAL SHEETS
VII	LA	9	A	7	

F.M. 10856

A1 OF A4



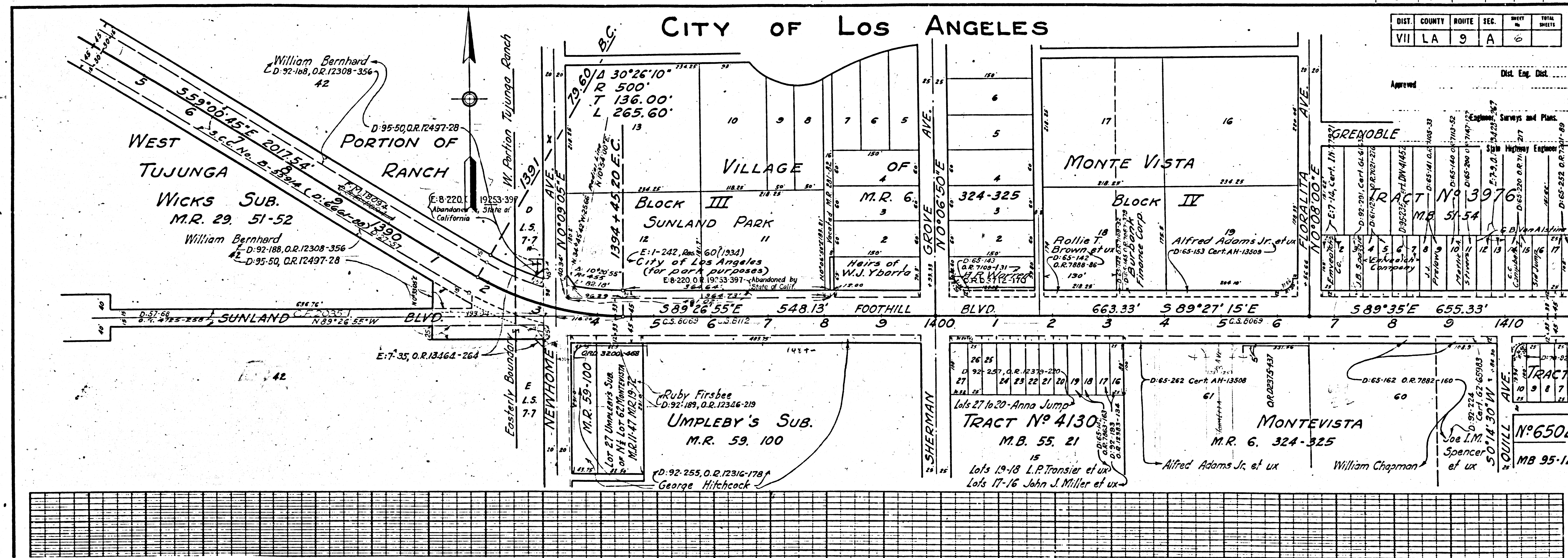


F.M. 10856
A3 OF A4

FED. ROAD DIST. NO.	STATE	FED. AID PROJ. NO.	FISCAL YEAR	SHEET NO.	TOTAL SHEETS
2	CAL.				

DIST.	COUNTY	ROUTE	SEC.	SHEET NO.	TOTAL SHEETS
VII	LA	9	A	6	

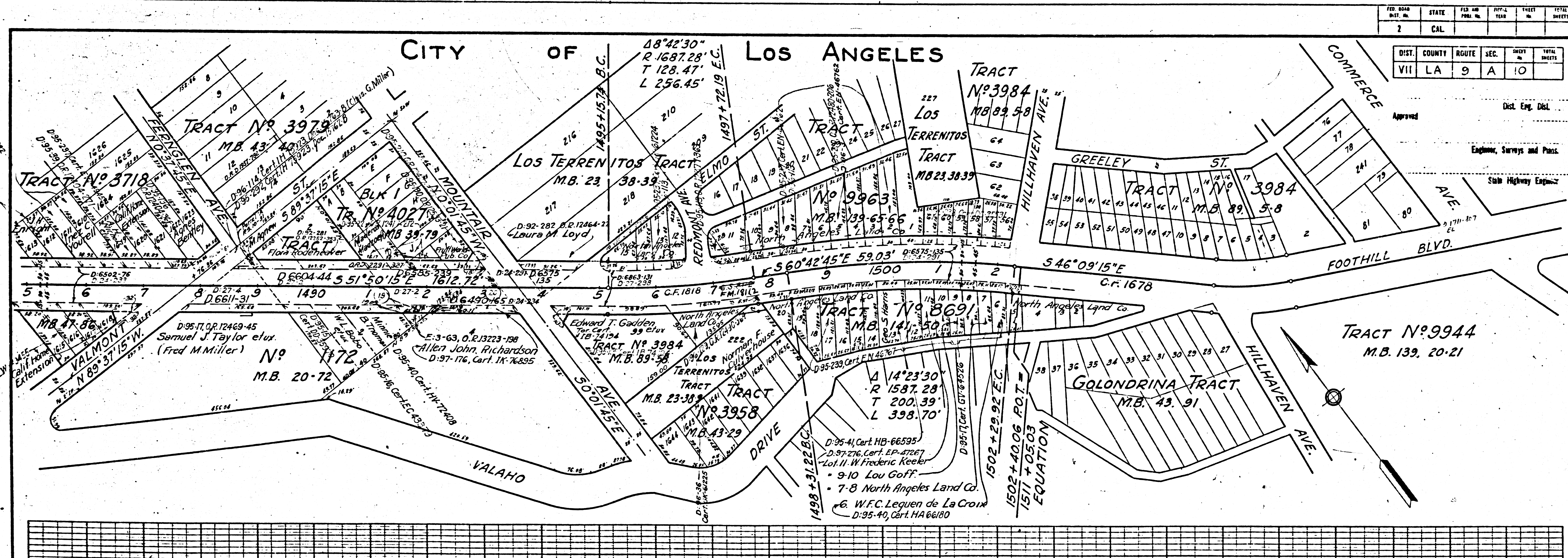
1	2	3	4	5	6	7	8	9	10
11	12	13	14	15	16	17	18	19	20



FED. ROAD DIST. NO.	STATE	FED. AID PROJ. NO.	FISCAL YEAR	SHEET NO.	TOTAL SHEETS
2	CAL.				

DIST.	COUNTY	ROUTE	SEC.	SHEET NO.	TOTAL SHEETS
VII	LA	9	A	10	

1	2	3	4	5	6	7	8	9	10
11	12	13	14	15	16	17	18	19	20



Index 52

Superior Court Case No. 267840
 Suit for Condemnation
 Filed Jan. 8, 1934
 People of the State of Cal., Plaintiff
 Vs
 Eva M. Murphree et al, Defendants.
 Note: - Suit covers parcels shaded in red on this map.
 Order authorizing Pltff. to take immediate possession of all parcels, rendered Jan. 8, 1934.
 Case dismissed as to parcel 12 Feb. 10, 1934.
 Final judgment in favor of Pltff. as to Parcel 6, rendered Mar. 6, 1935
 E-3-139, O.R. 13220-270
 Final judgment in favor of Plaintiff as to Parcel 18, rendered Nov. 5, 1935.
 E-7-291, O.R. 13765-198
 Case dismissed as to all remaining parcels on various dates.

F.M. 10856
 A 4 OF A 4