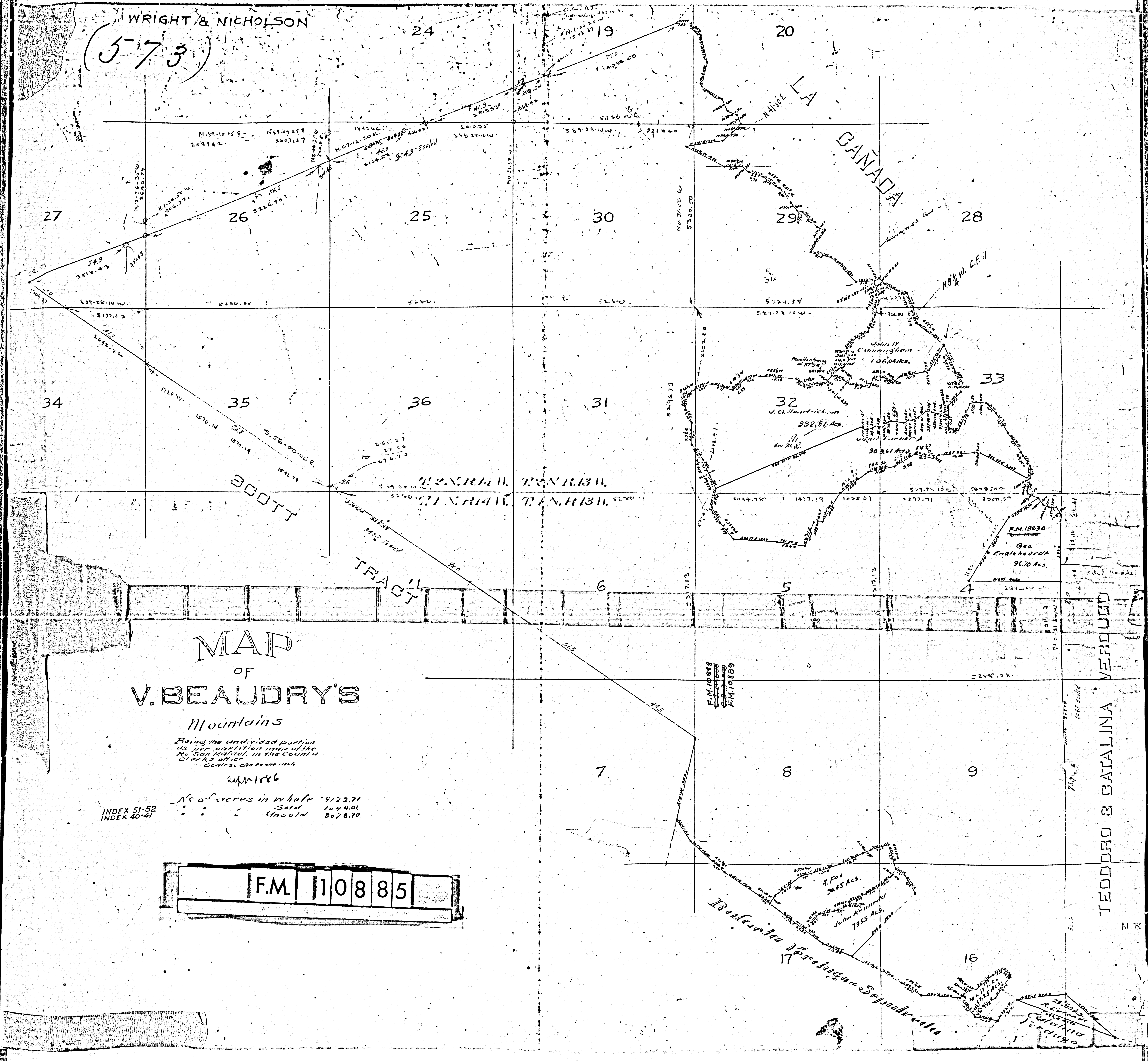


WRIGHT & NICHOLSON  
(573)



MAP  
OF  
V. BEAUDRY'S  
Mountains

Being the undivided portion  
as per partition map of the  
R. San Rafael, in the County  
of Santa Clara.

W.M. 1886

No. of acres in whole 9122.71  
Sold 1444.01  
Unsold 8078.70

INDEX 51-52  
INDEX 40-41

F.M. 110885

F.M. 10888  
F.M. 10889

TEDORO & GALALINA VERDUGO

A. Fox 3645 Acs.  
John K. Reynolds 7355 Acs.

16