

DE

SANTA MONICA

Case No. 2405-17th Judicial District Court

TRACT NO. 9473
M.B. 142 Pg. 4-8 Inc.

{ R = 3800'
Δ = 8°46'30"
T = 291.56'
L = 581.98' }

MAR

TRACT NO. 6753
M.B. 143 Pg. 25-28 Inc.

FOR LATE

MONICA

BLOCK - 6

BLOCK-6
5

Portion of Allotment No. 2 to Francisca M. De Rios
Rancho Boca de Santa Monica
Case No. 2405 - 17th Judicial District Court

Parcel No. 1 - 0.769 Ac.±

Parcel No. 2
1131 Sq. Ft.

TRACT NO. 10707
M.B. 171 Pg. 43-45 Inc.

WILL ROGERS

THE PASCUAL MARQUEZ TRACT

Portion of Allot. No. 2 to Pascual Marquez
SANTA MONICA CANYO

OCEAN

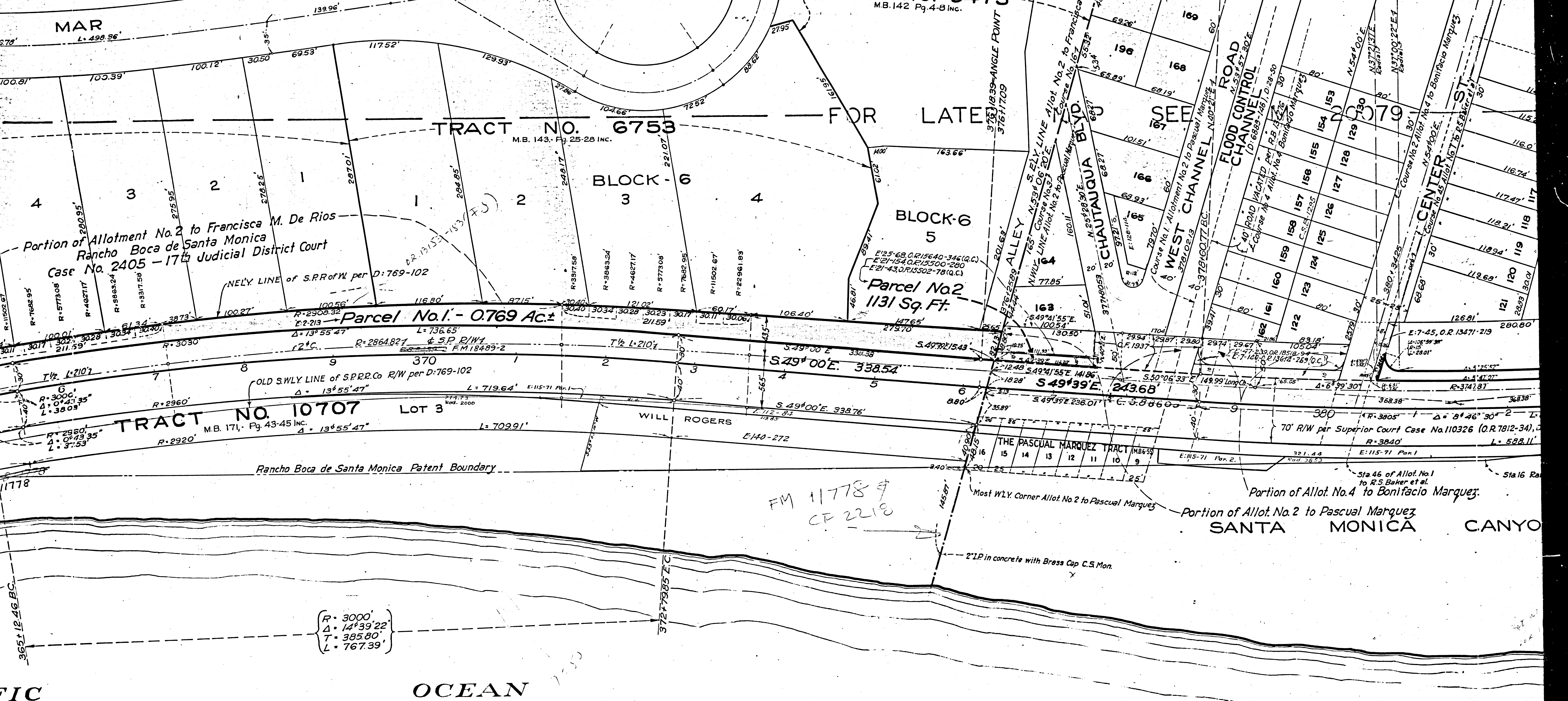
FIC

F.M. 10865-1

A 2 OF A 3

FM 11778
CF 2218

{ R = 3000'
Δ = 14°39'22"
T = 385.80'
L = 767.39' }



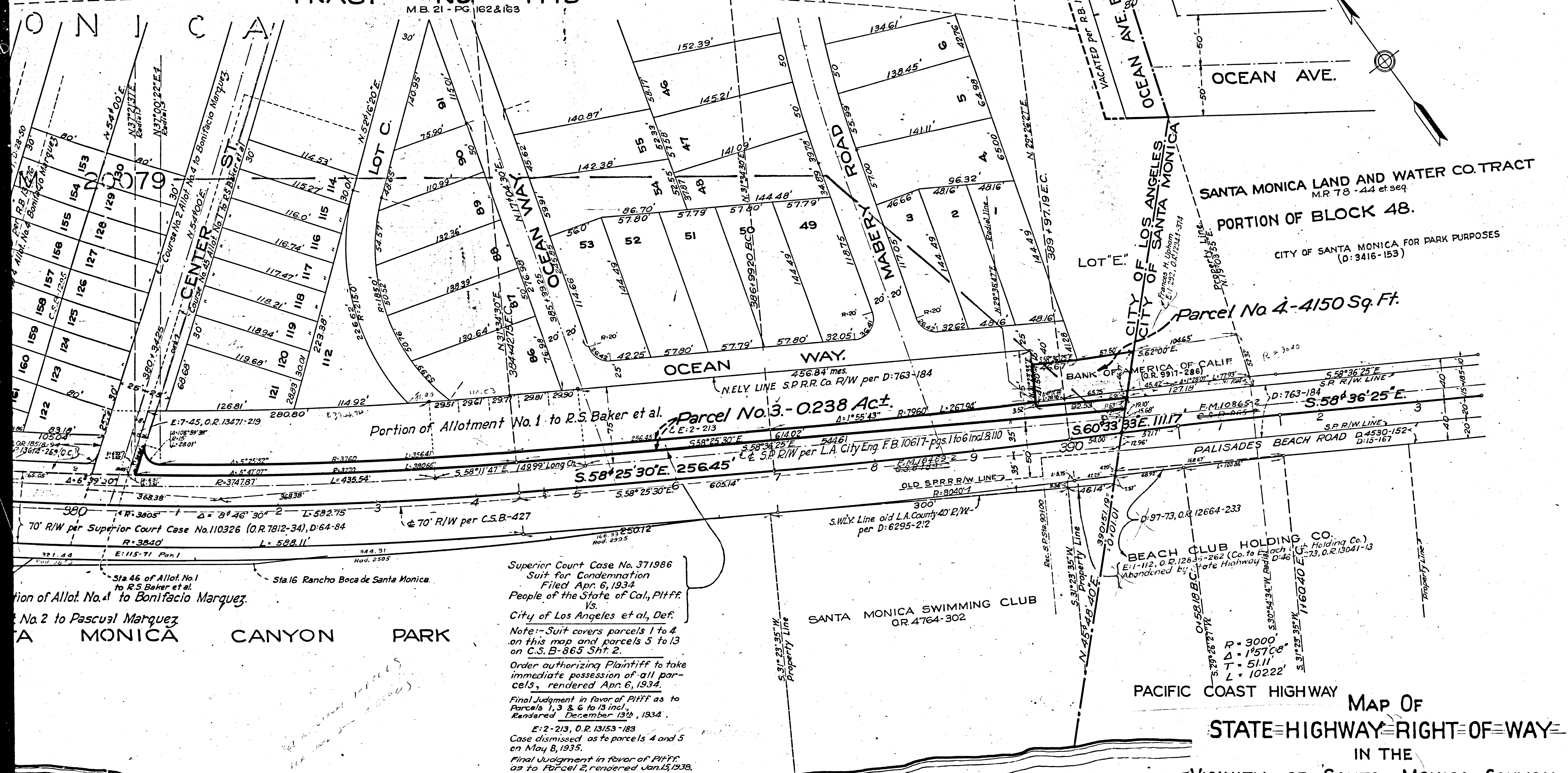
| | | | |
|------|--------|-------|------|
| DIST | COUNTY | ROUTE | SEC. |
| VII | L.A. | 60 | B |

Approved: _____
 Dist. Eng. DIST. VIT

$R = 3800'$
 $\Delta = 8^\circ 46' 30''$
 $T = 291.56'$
 $L = 581.98'$

$R = 8000'$
 $\Delta = 2^\circ 08' 03''$
 $T = 149.01'$
 $L = 297.99'$

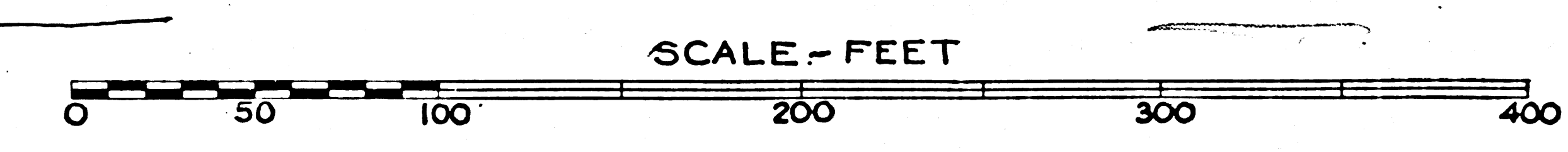
TRACT NO. 1719
 M.B. 21 - PG. 162 & 163



Superior Court Case No. 371986
 Suit for Condemnation
 Filed Apr. 6, 1934
 People of the State of Cal., Pltff.
 Vs.
 City of Los Angeles et al., Def.
 Note: - Suit covers parcels 1 to 4
 on this map and parcels 5 to 13
 on C.S.B-865 Sht. 2.
 Order authorizing Plaintiff to take
 immediate possession of all par-
 cels, rendered Apr. 6, 1934.
 Final Judgment in favor of Pltff as to
 Parcels 1, 3, & 6 to 13 incl.,
 Rendered December 13th, 1934.
 E: 2-213, O.R. 13153-183
 Case dismissed as to parcels 4 and 5
 on May 8, 1935.
 Final Judgment in favor of Pltff
 as to Parcel 2, rendered Jan. 15, 1938.

MAP OF
 STATE-HIGHWAY-RIGHT-OF-WAY
 IN THE
 VICINITY OF SANTA MONICA CANYON
 Dec. 1933

MAP FOR
 RESOLUTION NO. 1.



Index 58

| | |
|------|---------|
| F.M. | 10865-1 |
| A3 | OF A3 |

C.S.B. 865