

F.M. 10884-1
A1 OF A3

CITY OF THE TOWN OF SANTA MONICA

CALIFORNIA AVE.

MAP OF BLOCK 98.

M.R. 39-45 to 51.

WILSHIRE BLVD.
FORMERLY NEVALUA AVE.

BLOCK 123 MONICA

ARIZONA AVE.

MONICA

BLOCK 148

OCEAN AVE.

PARK

VICENTE
PAT. 3-30-31

CITY OF SANTA MONICA
(FOR PARK PURPOSES)
D: 15-179

PALISADES

MOST ELY. COR.
D. 4741-183

PARK

CITY OF SANTA MONICA
(FOR PARK PURPOSES)
D: 15-179

THE LANKERSHIM ESTATE (A CORP.)
O.R. 4822-3

SEE S.C. CASE NO. 14541
SOUTHERN PACIFIC RAILROAD CO
O.R. 12600-65

UNDEEDED ROAD CLAIMED BY CITY OF SANTA MONICA BY SPECIAL ORDINANCE NO 601.
MISC. REC. BK. 238 PG. 237 et seq.

E: 2-217 Parcel No. 4 - 1.64 Ac.±

E: 2-217 Parcel No. 5 - 1.77 Ac.±

SEQUOIA INVESTMENT CO.
Parcel No 6 - 1.086 Ac.±

PALISADES

BEACH

ROAD

LOT 45

Proposed State Highway

Superior Court Case No. 378110
Suit for Condemnation
Filed Sept. 12, 1934
People of the State of Cal., Pltff.
Vs
Title Guarantee & Trust Co., Def.

Note: Suit covers parcels 1 to 10
on this map and parcel 11 on
S. B. 884-311-2, F.M. 10884-2

Final Judgment in favor of Pltff as to parcels
1, 2, & 4 to 11 incl., rendered Dec. 13, 1934.
E: 2-217, D.R. 13179-100

Parcel 3 is owned by City of Santa Monica and
Plaintiff herein does not seek to condemn
the interest of said city.

Highway
R = 11,447.67
Δ = 4° 10' 50"
T = 417.84'
L = 835.27'

D: 82-87, O.R. 10530-89 (To City of Santa Monica)
E: 96-184, O.R. 31924-256 (Par. 1) To State of Calif.

F.M. 10884-1

A2 OF A3

SUNSET BEACH
M.R. 83-10

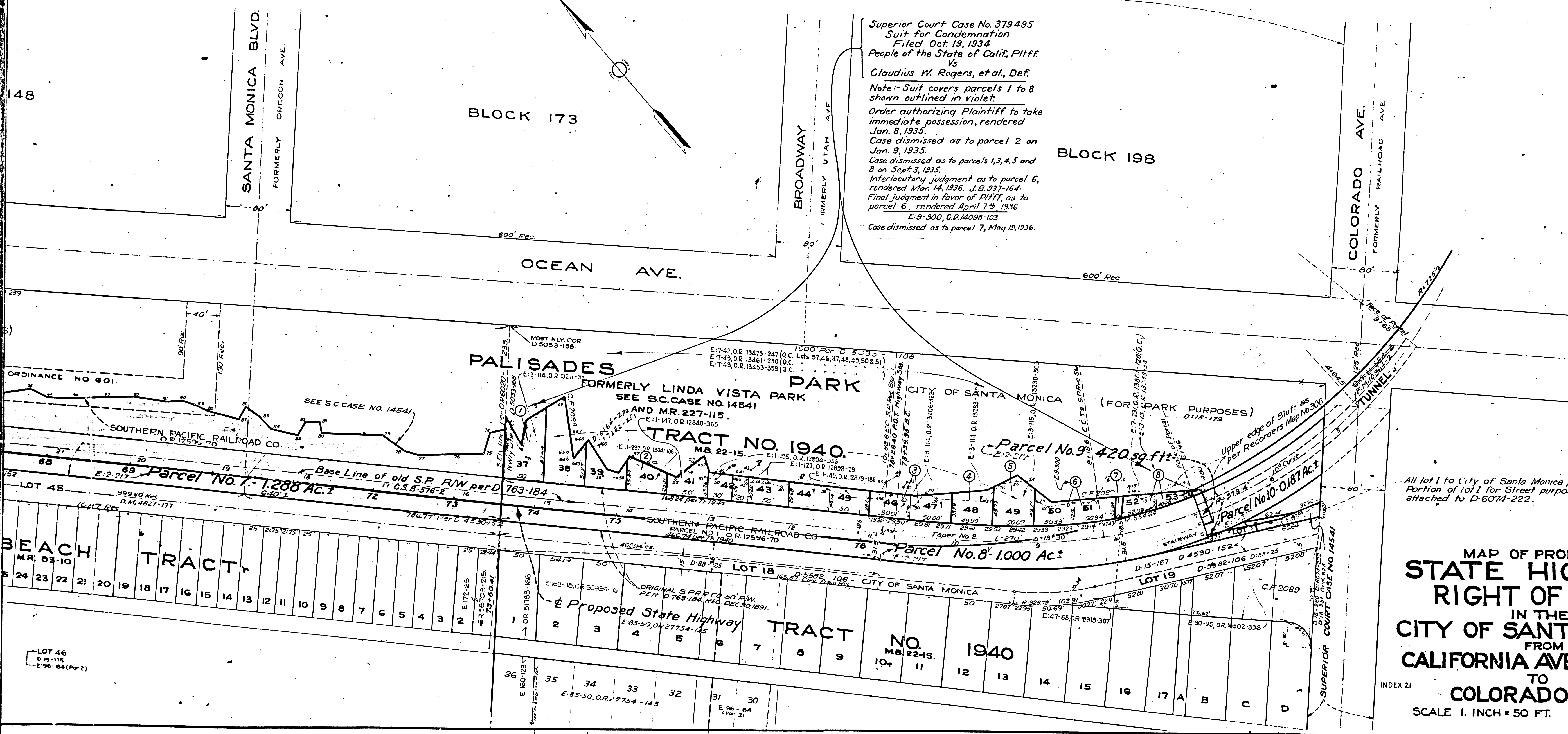
LOT 46
D: 15-179
E: 96-184 (Par. 2)

EXHIBIT "A"

MAP FOR RESOLUTION NO. 4.

FIRST COUNTY TRIMBLE & CO.
VII L.A. 60 8M.
DIST. ENG. DIST. VII

SCALE - FEET
0 50 100 200 300 400



Superior Court Case No. 379495
 Suit for Condemnation
 Filed Oct. 19, 1934
 People of the State of Calif., Pltff.
 Vs
 Claudius W. Rogers, et al., Def.
 Note - Suit covers parcels 1 to 8
 shown outlined in Violet.
 Order authorizing Plaintiff to take
 immediate possession, rendered
 Jan. 8, 1935.
 Case dismissed as to parcel 2 on
 Jan. 9, 1935.
 Case dismissed as to parcels 1, 3, 4, 5 and
 8 on Sept. 3, 1935.
 Interlocutory judgment as to parcel 6,
 rendered Mar. 14, 1936. J. B. 937-164.
 Final judgment in favor of Pltff, as to
 parcel 6, rendered April 7th, 1936
 E-9-300, O.R. 14098-103
 Case dismissed as to parcel 7, May 19, 1936.

All lot 1 to City of Santa Monica per D-6074-222.
 Portion of lot 1 for Street purposes per Ordinance
 attached to D-6074-222.

MAP OF PROPOSED
STATE HIGHWAY
RIGHT OF WAY
 IN THE
CITY OF SANTA MONICA
 FROM
CALIFORNIA AVE. INCLINE
 TO
COLORADO AVE.
 INDEX 21
 SCALE 1. INCH = 50 FT. JANUARY 1934.

F.M. 10884-1
 A3 OF A3