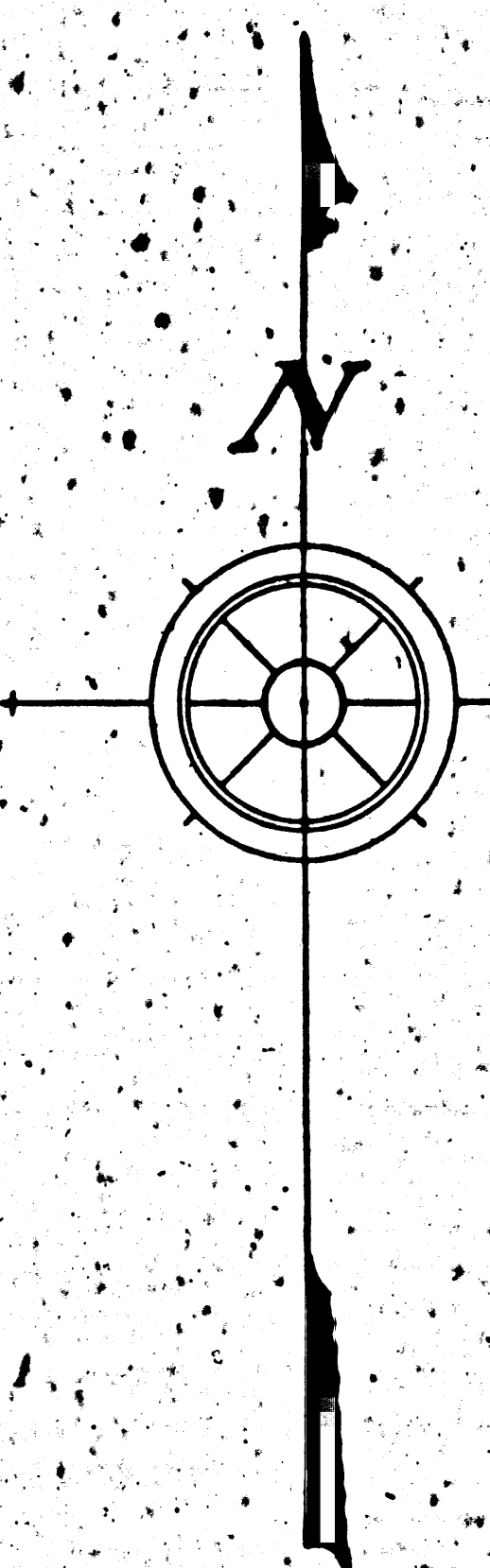


FILE NO. 11101818  
 A II OF A 2



F.M. 10552  
C.S. B-888

F.M. 10552  
C.S. B-888

D:44-49, O.R. 3920-28 - To City of Glendale  
for Brand Park (This map does not show  
entire park - See C.S. B-888)  
F.M. 10552

N. 0° 38' 15" W

S 88° 55' 30" W  
2840.00

F.M. 10552  
C.S. B-888

Hd 2" x 2"  
Set 1 1/2" pipe

Set 1 1/2"

Hd 2" x 2"  
Set 1 1/2" pipe

Hd 2" x 2" 0.03 M

D:66-91 O.R. 7104-37  
Reservoir

Hd 2" x 1" P  
Hd 2" x 0.102  
Govt. Radio Station

768.04

Set 1 1/2" pipe

791.97

804.4

805.79

Hd 2" x 1" P 0.063

N. 88° 56' 15" E  
1480.32

H 4 x 6

C.S. B-888  
F.M. 10552

Hd 2" x 2"  
Set 1 1/2" pipe

Hd 2" x 2"  
Set 1 1/2" pipe

Hd 2" x 1" P M & G Pipe

Hd 1 1/2" x 1" 0.10 M  
Set 1 1/2" pipe

792.86

Set 1 1/2" pipe

1196.85

1196.85

1196.85

1196.85

1196.85

1196.85

1196.85

1196.85

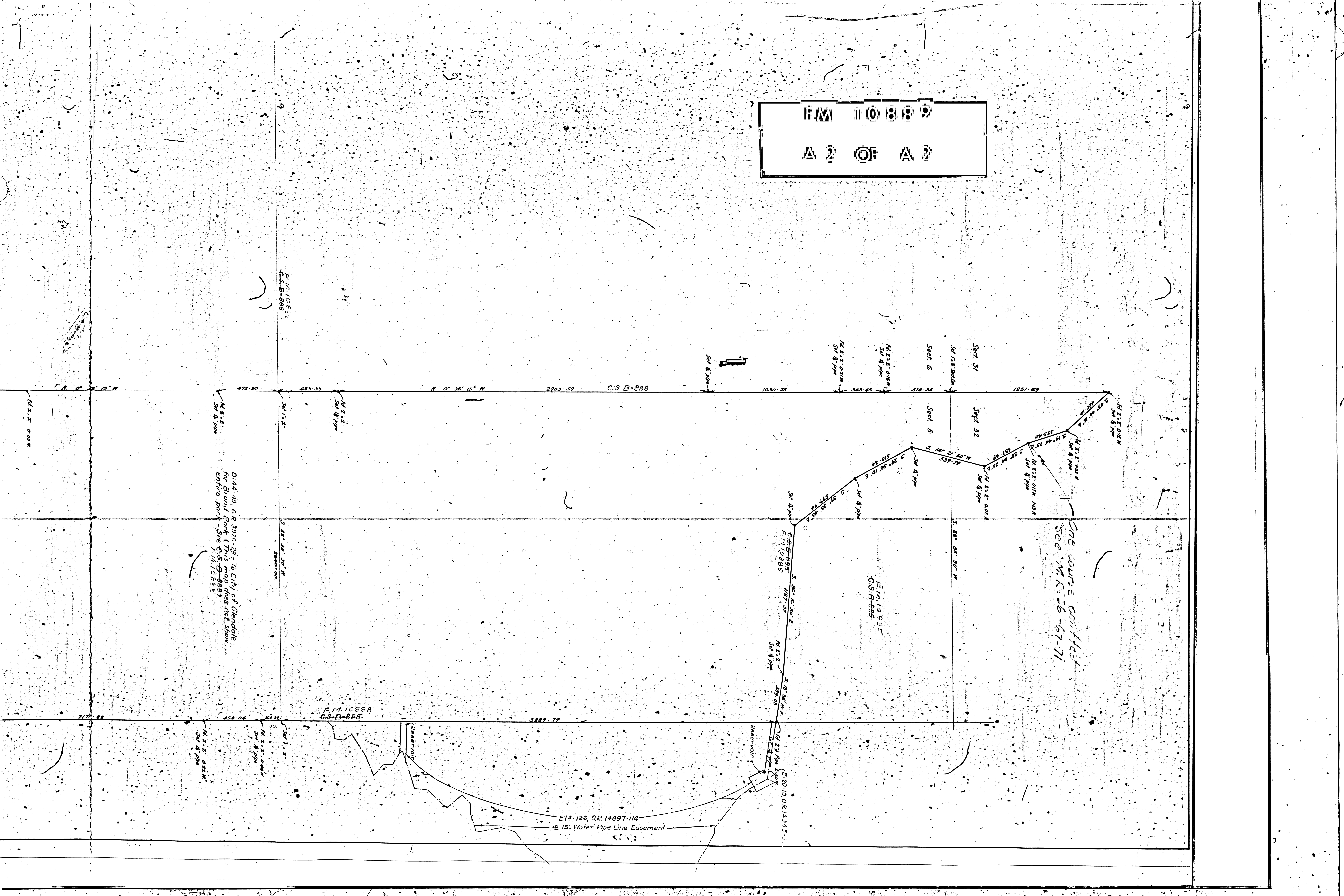
FOR RESURVEY SEE C.S. B-725, Sh. 13.

INDEX 40  
INDEX 51

ENGINEERING DEPARTMENT <b>CITY OF GLENDALE</b> CALIFORNIA BOUNDARY LINES OF <b>BRAND PARK</b>		
APPROVED: _____ City Engineer	SCALE 1" = 1000' Surveyed _____ Plotted _____ F. & M.	PLAN NO. <b>2169</b>
DATED: _____ Supt. of Parks		



F/M 110889  
A 2 OF A 2



D-44-49, O.R. 3920-28 - To City of Glendale  
for Brand Park (See D-45-49)  
entire park - See C.M. 10888

One source conflict  
see M.R. 26-67-71

E14-196, O.R. 14697-114  
15' Water Pipe Line Easement

E-20-10, O.R. 14345

F.M. 10888  
C.S. B-888

F.M. 10895  
C.S. B-885

F.M. 10885  
C.S. B-885

F.M. 10888  
C.S. B-888

C.S. B-888

N. 0° 38' 15\"/>

472.50

483.33

N. 0° 38' 15\"/>

2903.59

1030.28

348.45

514.35

1251.69

R. 2.2' 0.00 M

R. 2.2' 0.00 M

R. 2.2' 0.00 M

5.00' 0.00 M

R. 2.2' 0.00 M

R. 2.2' 0.00 M

R. 2.2' 0.00 M

R. 2.2' 0.00 M

R. 2.2' 0.00 M

R. 2.2' 0.00 M

R. 2.2' 0.00 M

R. 2.2' 0.00 M

R. 2.2' 0.00 M

R. 2.2' 0.00 M

R. 2.2' 0.00 M

R. 2.2' 0.00 M

R. 2.2' 0.00 M

R. 2.2' 0.00 M

R. 2.2' 0.00 M

R. 2.2' 0.00 M

R. 2.2' 0.00 M

R. 2.2' 0.00 M

R. 2.2' 0.00 M

R. 2.2' 0.00 M

R. 2.2' 0.00 M

R. 2.2' 0.00 M

R. 2.2' 0.00 M

R. 2.2' 0.00 M

R. 2.2' 0.00 M

R. 2.2' 0.00 M

R. 2.2' 0.00 M

R. 2.2' 0.00 M

R. 2.2' 0.00 M

R. 2.2' 0.00 M

R. 2.2' 0.00 M

R. 2.2' 0.00 M

R. 2.2' 0.00 M

R. 2.2' 0.00 M

R. 2.2' 0.00 M

R. 2.2' 0.00 M

R. 2.2' 0.00 M

R. 2.2' 0.00 M

R. 2.2' 0.00 M

R. 2.2' 0.00 M

R. 2.2' 0.00 M

R. 2.2' 0.00 M

R. 2.2' 0.00 M

R. 2.2' 0.00 M

R. 2.2' 0.00 M

R. 2.2' 0.00 M

R. 2.2' 0.00 M

R. 2.2' 0.00 M

R. 2.2' 0.00 M

R. 2.2' 0.00 M

R. 2.2' 0.00 M

R. 2.2' 0.00 M

R. 2.2' 0.00 M

R. 2.2' 0.00 M

R. 2.2' 0.00 M

R. 2.2' 0.00 M

R. 2.2' 0.00 M

R. 2.2' 0.00 M

R. 2.2' 0.00 M

R. 2.2' 0.00 M

R. 2.2' 0.00 M

R. 2.2' 0.00 M

R. 2.2' 0.00 M

R. 2.2' 0.00 M

R. 2.2' 0.00 M

R. 2.2' 0.00 M

R. 2.2' 0.00 M

R. 2.2' 0.00 M

R. 2.2' 0.00 M

R. 2.2' 0.00 M

R. 2.2' 0.00 M

R. 2.2' 0.00 M