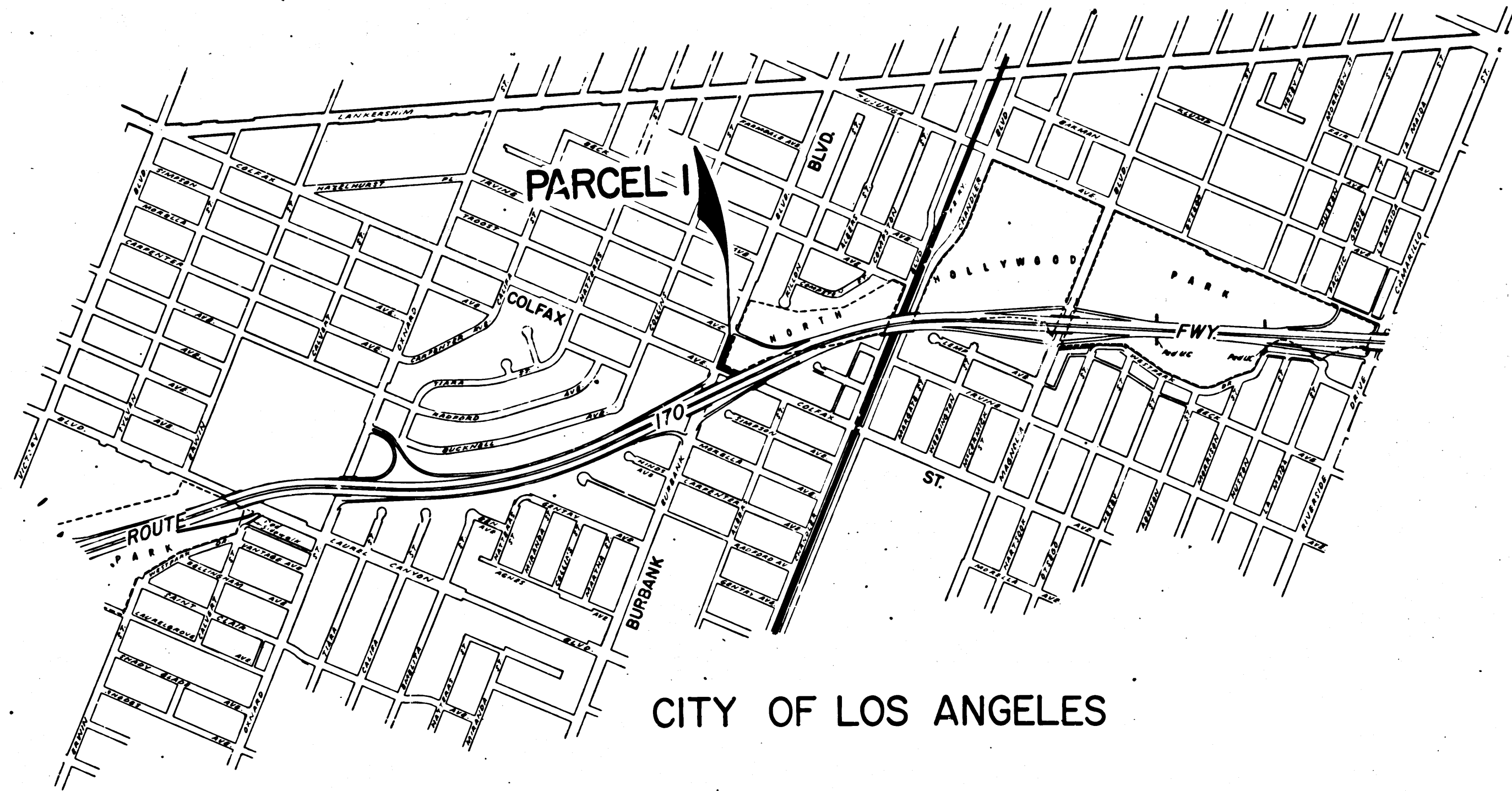
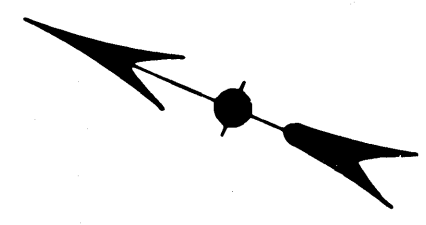


DIST	COUNTY	ROUTE	POST MILES	SHEET NO.	TOTAL SHEETS
07	L.A.	170	16.0	1	2

STATE OF CALIFORNIA  
 TRANSPORTATION AGENCY  
 DEPARTMENT OF PUBLIC WORKS  
 DIVISION OF HIGHWAYS

*A. H. H. H.*  
 DEPUTY DISTRICT ENGINEER  
 REGISTERED CIVIL ENGINEER NO. 6416  
 November 18, 1971  
 DATE

RIGHT OF WAY MAPS OF  
**STATE HIGHWAY**  
 In the City of Los Angeles at Burbank Blvd. and Colfax St.



3368  
 FILED  
 AT REQUEST OF  
 DEPT. OF PUBLIC WORKS  
 JAN. 27, 1972  
 1 MIN. 47M  
 PAST  
 IN BOOK 10  
 AT PAGE 1  
 OF STATE HIGHWAY MAPS  
 LOS ANGELES COUNTY, CALIF.  
 COUNTY RECORDER  
 BY *[Signature]*  
 Deputy *Fre*

STATE OF CALIFORNIA  
 TRANSPORTATION AGENCY  
 DEPARTMENT OF PUBLIC WORKS  
 DIVISION OF HIGHWAYS  
**PROPOSED RELINQUISHMENT**

SCALE  
 0 600 1200 1800 2400

DR'N BY <i>L.W.K.</i>	R/W MAP NO.
C'LC BY <i>D.D.</i>	REF MAP NO. 163-5
C'K'D BY <i>H.L.</i>	<b>REL-837</b>
REVISED	

COUNTY ENGINEER'S COPY

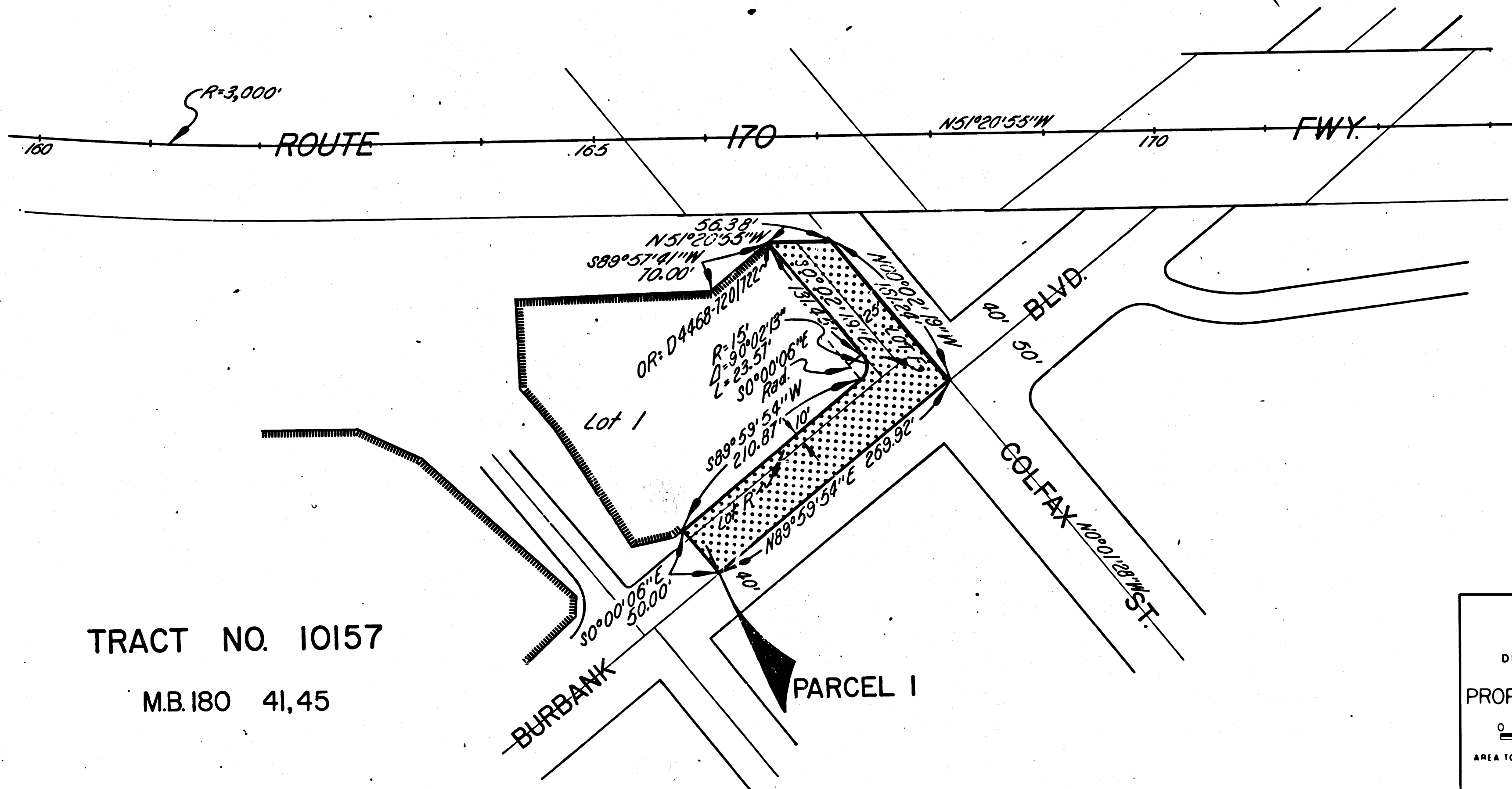
*10/12*

DIST	COUNTY	ROUTE	POST MILES	SHEET NO.	TOTAL SHEETS
07	L.A.	170	16.0	2	2

FILED WITH LOS ANGELES COUNTY RECORDER  
JAN 27 1972

*R.W. Felt*  
DISTRICT RIGHT OF WAY ENGINEER  
November 18, 1971  
DATE

CITY OF LOS ANGELES



TRACT NO. 10157  
M.B.180 41,45

STATE OF CALIFORNIA  
TRANSPORTATION AGENCY  
DEPARTMENT OF PUBLIC WORKS  
DIVISION OF HIGHWAYS

**PROPOSED RELINQUISHMENT**

0 50 100 150 200

AREA TO BE RELINQUISHED SHOWN THUS

ACCESS PROHIBITED

DR'N BY <i>L.W.K.</i>	R/W MAP NO. <i>F-1384</i>
C'LC BY <i>D.D.</i>	REF MAP NO. <i>163-5</i>
C'K'D BY	<b>REL-837</b>
REVISED	

COUNTY ENGINEER'S COPY