

DIST	COUNTY	ROUTE	POST MILES	SHEET NO.	TOTAL SHEETS
07	L.A.	210	28.9-302	1	1

STATE OF CALIFORNIA  
 TRANSPORTATION AGENCY  
 DEPARTMENT OF PUBLIC WORKS  
 DIVISION OF HIGHWAYS

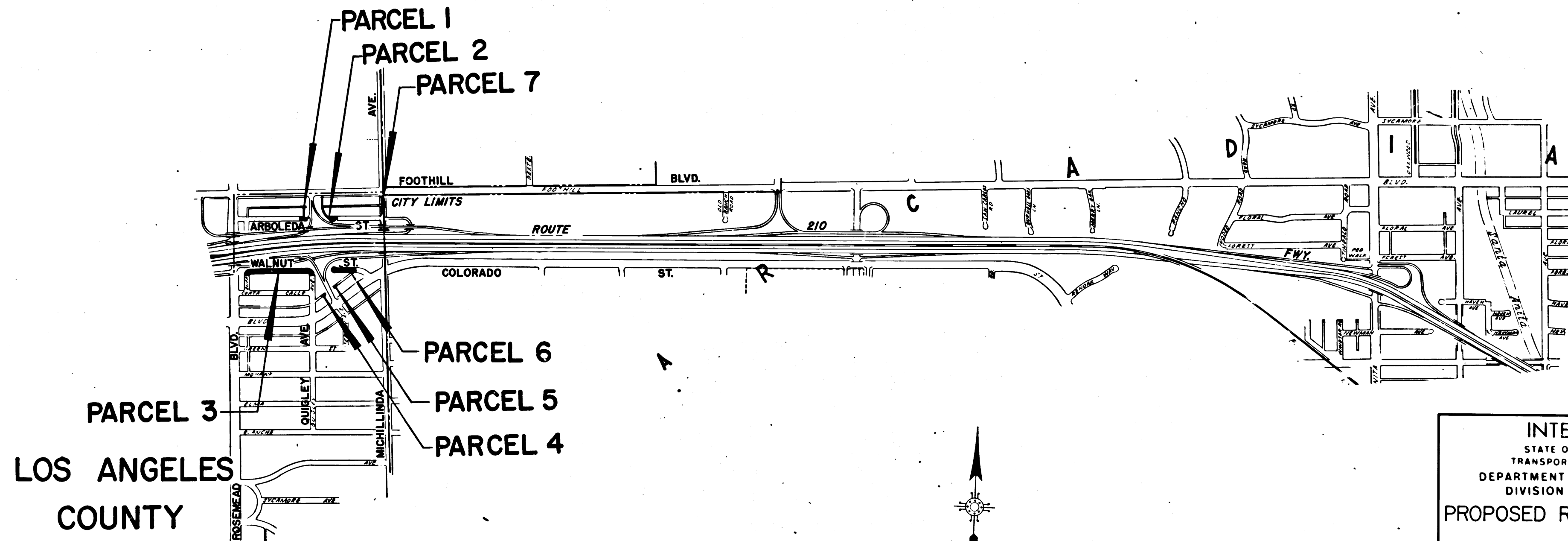
*A. L. Hinkel*  
 DEPUTY DISTRICT ENGINEER  
 REGISTERED CIVIL ENGINEER NO. 6416  
 March 10, 1972  
 DATE

RIGHT OF WAY MAPS OF  
**STATE HIGHWAY**

In the County of Los Angeles on Route 210 between  
 0.2 miles west of Rosemead Ave. and Michillinda Ave.

2722

FILED  
 AT REQUEST OF  
 DEPT. OF PUBLIC WORKS  
 MAY 18, 1972  
 8/ MIN.  
 PAST 10 AM  
 IN BOOK 10  
 AT PAGE 20  
 OF STATE HIGHWAY MAPS  
 LOS ANGELES COUNTY, CALIF.  
 COUNTY REGISTER  
 BY *J. L. Thompson*  
 Deputy  
 FREE



INTERSTATE  
 STATE OF CALIFORNIA  
 TRANSPORTATION AGENCY  
 DEPARTMENT OF PUBLIC WORKS  
 DIVISION OF HIGHWAYS  
**PROPOSED RELINQUISHMENT**

SCALE  
 0 600 1200 1800 2400

DR'N BY <i>L.W.A.</i>	R/W MAP NO.
C'LC BY <i>J.M.</i>	REF MAP NO. 181-12
C'K'D BY <i>H.L.</i>	<b>REL-825</b>
REVISED	

COUNTY ENGINEER'S COPY

DIST	COUNTY	ROUTE	POST MILES	SHEET NO	TOTAL SHEETS
07	L.A.	210	289-302	2	4

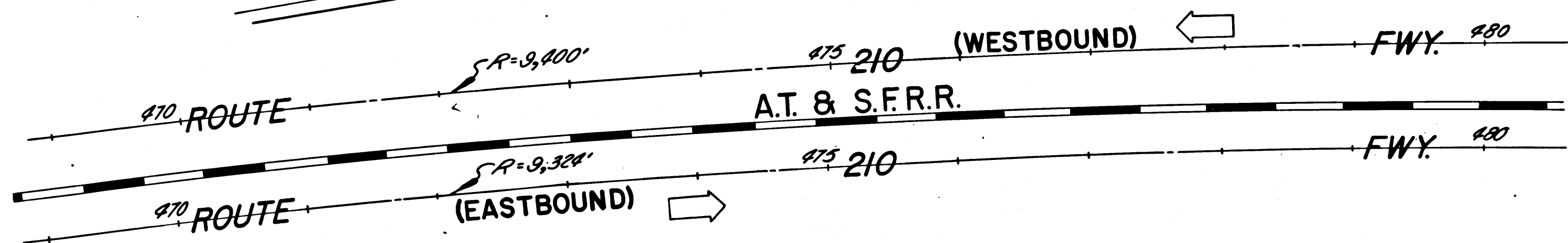
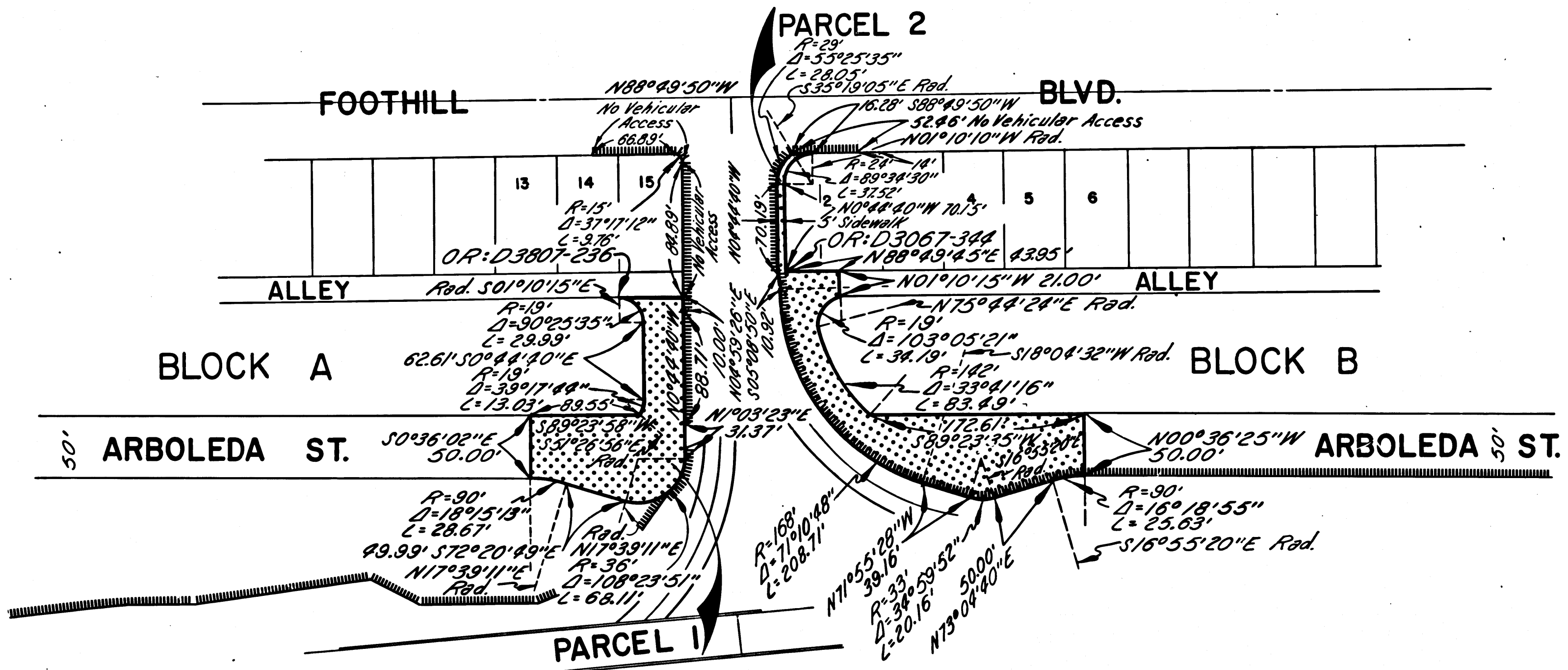
COUNTY OF LOS ANGELES

*B.W. Falk*  
 DISTRICT RIGHT OF WAY ENGINEER  
 March 10, 1972  
 DATE

FILED WITH LOS ANGELES  
 COUNTY RECORDER  
 MAY 18 1972

TRACT NO. 9562

M. B. 144 - 57/59



INTERSTATE  
 STATE OF CALIFORNIA  
 TRANSPORTATION AGENCY  
 DEPARTMENT OF PUBLIC WORKS  
 DIVISION OF HIGHWAYS

PROPOSED RELINQUISHMENT

0 50 100 150 200

AREA TO BE RELINQUISHED SHOWN THUS

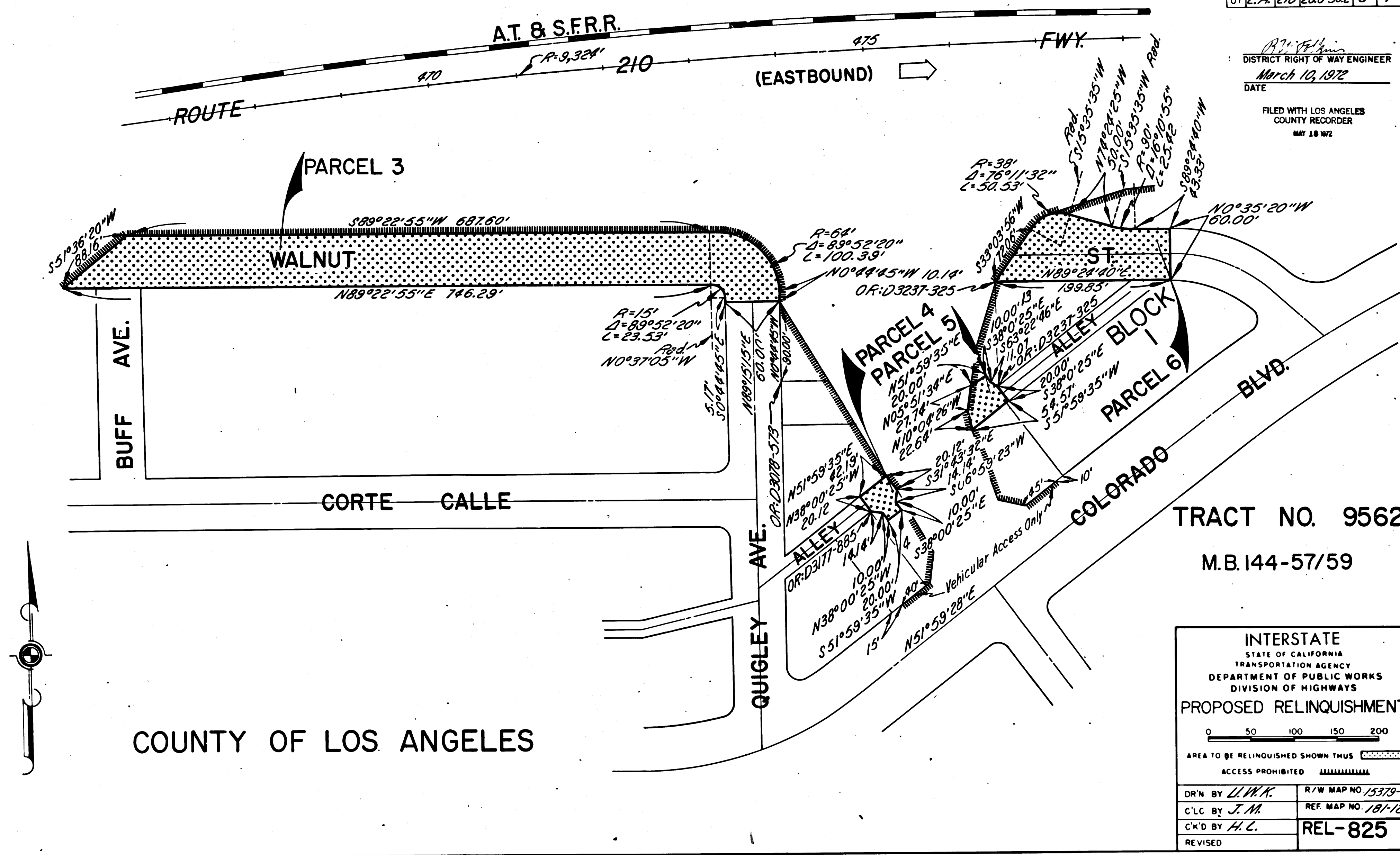
ACCESS PROHIBITED

DR'N BY <i>LL.W.K.</i>	R/W MAP NO. 13263-C
C.L.C. BY <i>J.M.</i>	REF MAP NO. 181-12
C.K'D BY <i>H.L.</i>	REL-825
REVISED	

DIST	COUNTY	ROUTE	POST MILES	SHEET NO.	TOTAL SHEETS
07	L.A.	210	28.9-30.2	3	4

*R. J. ...*  
 DISTRICT RIGHT OF WAY ENGINEER  
 March 10, 1972  
 DATE

FILED WITH LOS ANGELES  
 COUNTY RECORDER  
 MAY 18 1972



COUNTY OF LOS ANGELES

TRACT NO. 9562  
 M.B. 144-57/59

INTERSTATE  
 STATE OF CALIFORNIA  
 TRANSPORTATION AGENCY  
 DEPARTMENT OF PUBLIC WORKS  
 DIVISION OF HIGHWAYS  
 PROPOSED RELINQUISHMENT

0 50 100 150 200

AREA TO BE RELINQUISHED SHOWN THUS

ACCESS PROHIBITED

DR'N BY <i>L.W.K.</i>	R/W MAP NO. 15379-C
C/LC BY <i>J.M.</i>	REF. MAP NO. 181-12
C/K'D BY <i>H.C.</i>	REL-825
REVISED	

COUNTY ENGINEER'S COPY

DIST	COUNTY	ROUTE	POST MILES	SHEET NO.	TOTAL SHEETS
07	L.A.	210	289-322	4	4

*A.W. Bell*  
 DISTRICT RIGHT OF WAY ENGINEER  
 March 10, 1972  
 DATE

FILED WITH LOS ANGELES  
 COUNTY RECORDER  
 MAY 18 1972

TRACT  
 NO.  
 9562

BLOCK B  
 ALLEY

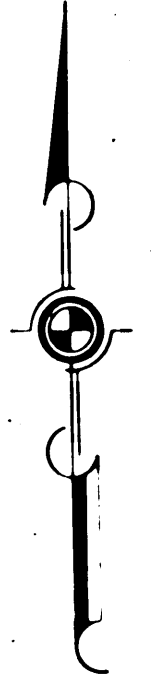
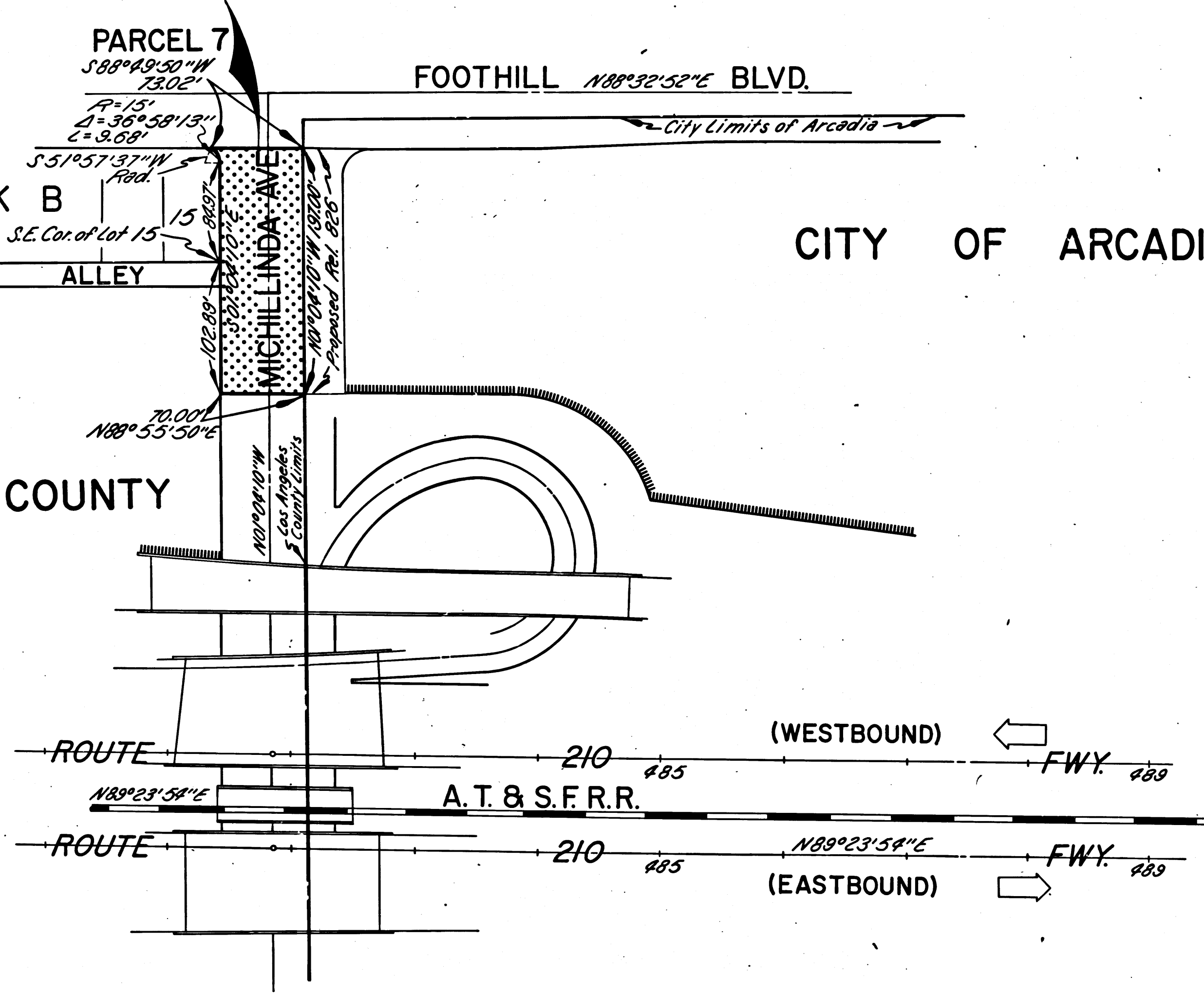
M.B. 144-57/59

LOS ANGELES COUNTY

FOOTHILL N88°32'52"E BLVD.

City Limits of Arcadia

CITY OF ARCADIA



INTERSTATE  
 STATE OF CALIFORNIA  
 TRANSPORTATION AGENCY  
 DEPARTMENT OF PUBLIC WORKS  
 DIVISION OF HIGHWAYS  
 PROPOSED RELINQUISHMENT

0 50 100 150 200

AREA TO BE RELINQUISHED SHOWN THUS [Dotted pattern]

ACCESS PROHIBITED [Hatched pattern]

DR'N. BY <i>L.W.K.</i>	R/W MAP NO. 13166-C
C'LC BY <i>J.M.</i>	REF. MAP NO. 181-12
C'K'D BY <i>H.L.</i>	REL-825
REVISED	

COUNTY ENGINEER'S COPY