

DIST	COUNTY	ROUTE	POST MILES	SHEET NO.	TOTAL SHEETS
07	LA	134	7.5/9.7	1	2

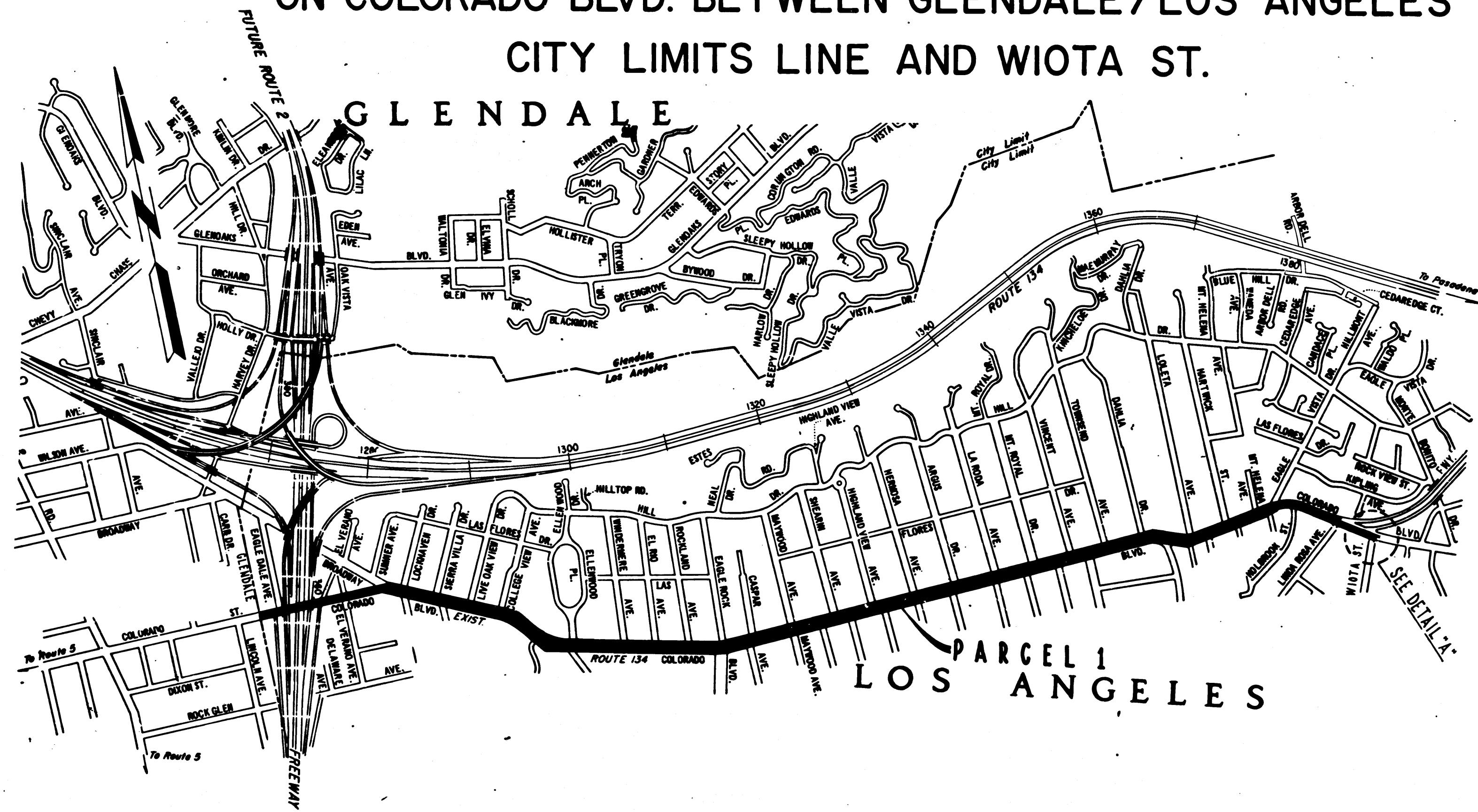
STATE OF CALIFORNIA
 TRANSPORTATION AGENCY
 DEPARTMENT OF PUBLIC WORKS
 DIVISION OF HIGHWAYS

A. H. Himmelsch
 DEPUTY DISTRICT ENGINEER
 REGISTERED CIVIL ENGINEER NO. 6416
 April 26, 1972
 DATE

RIGHT OF WAY MAPS OF
STATE HIGHWAY
 IN THE CITY OF LOS ANGELES
 ON COLORADO BLVD. BETWEEN GLENDALE/LOS ANGELES
 CITY LIMITS LINE AND WIOTA ST.

4:51

FILED AT REQUEST OF
 DEPT. OF PUBLIC WORKS
 JUNE 24 1972
 29 PM 3 PM
 10
 26
 OF STATE HIGHWAY MAPS
 LOS ANGELES COUNTY, CALIF.
J. K. Thompson
 FREE



STATE OF CALIFORNIA
 TRANSPORTATION AGENCY
 DEPARTMENT OF PUBLIC WORKS
 DIVISION OF HIGHWAYS
PROPOSED RELINQUISHMENT

0 1000 2000

AREA TO BE RELINQUISHED SHOWN THUS ██████████

DR'N BY H. LEE	R/W MAP NO. F-1167, F-1267, P. 5507
C'LC BY J. MORRIS	REF. MAP NO. 185-8
C'K'D BY U. KUEHN	REL- 845
REVISED	

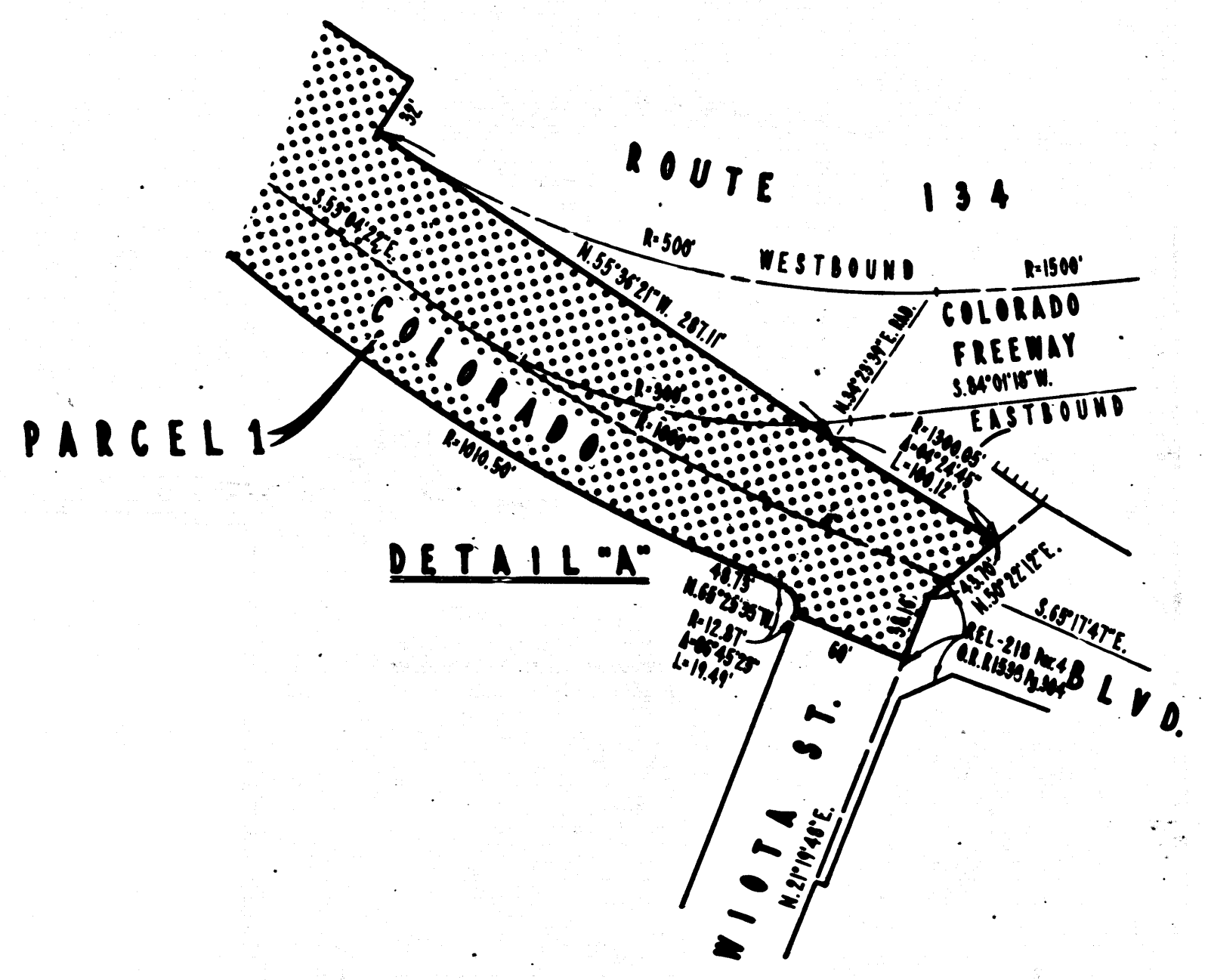
C I T Y O F L O S A N G E L E S

BOOK 10 PAGE 27

DIST	COUNTY	ROUTE	POST MILES	SHEET NO.	TOTAL SHEETS
07	LA	134	7.5/9.7	2	2

R.W. Felt
 DISTRICT RIGHT OF WAY ENGINEER
 April 26, 1972
 DATE

FILED WITH LOS ANGELES
 COUNTY RECORDER
 JUN 20 1972



STATE OF CALIFORNIA
 TRANSPORTATION AGENCY
 DEPARTMENT OF PUBLIC WORKS
 DIVISION OF HIGHWAYS

PROPOSED RELINQUISHMENT

0 50 100 150 200

AREA TO BE RELINQUISHED SHOWN THUS

ACCESS PROHIBITED

DR'N BY	H.L.	R/W MAP NO. F-1167, F-1249, PLS 5501
C'LC BY	J.M.	CONTRACT NO. 07-020854
C'K'D BY	U.K.	REL- 845
REVISED		

COUNTY ENGINEER'S COPY

10/77