

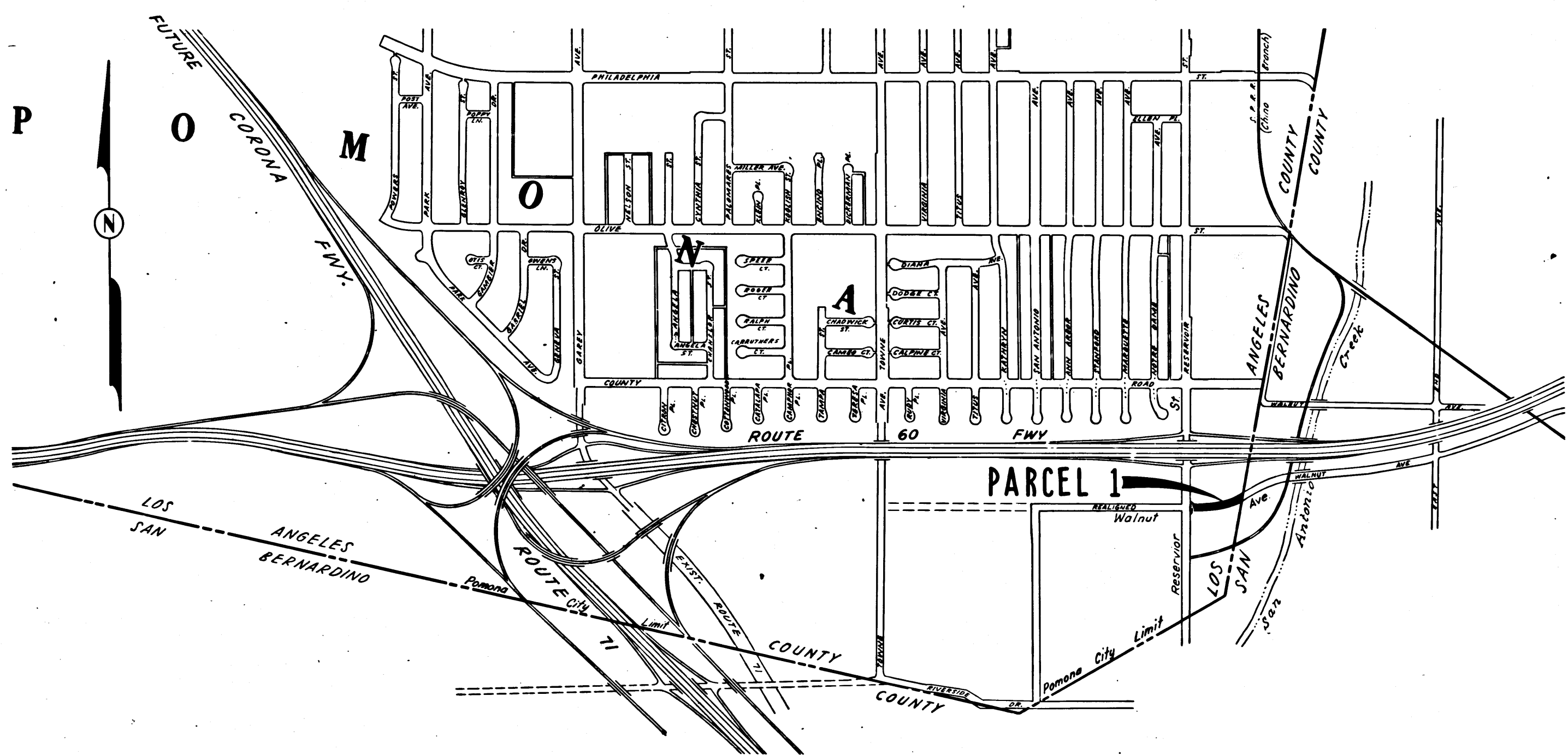
DIST	COUNTY	ROUTE	POST MILES	SHEET NO.	TOTAL SHEETS
07	LA	60	30.4	1	2

STATE OF CALIFORNIA  
 TRANSPORTATION AGENCY  
 DEPARTMENT OF PUBLIC WORKS  
 DIVISION OF HIGHWAYS

*A.L. Himmelhoch*  
 DEPUTY DISTRICT ENGINEER  
 REGISTERED CIVIL ENGINEER NO. 6416  
 MAY 31, 1972  
 DATE

RIGHT OF WAY MAPS OF  
**STATE HIGHWAY**  
**In the City of Pomona on Walnut Avenue**  
**between Reservoir St. and the San Bernardino County Line**

3614  
 FILED  
 AT REQUEST OF  
 DEPT. OF PUBLIC WORKS  
 AUG. 14, 1972  
 11 PAST 2 PM  
 IN BOOK 10  
 AT PAGE 29  
 OF STATE HIGHWAY MAPS  
 LOS ANGELES COUNTY, CALIF.  
 COUNTY RECORDER  
 BY *Frazier* Deputy



STATE OF CALIFORNIA  
 TRANSPORTATION AGENCY  
 DEPARTMENT OF PUBLIC WORKS  
 DIVISION OF HIGHWAYS  
**PROPOSED RELINQUISHMENT**

0 600 1200 1800 2400

AREA TO BE RELINQUISHED SHOWN THUS ██████████

DR'N BY <i>R. KOSINSKI</i>	R/W MAP NO. F-1680-4
C'LC BY <i>O. FRAZIER</i>	CONTRACT NO. 07-00261A
C'K'D BY <i>H. LEE</i>	<b>REL-784</b>
REVISED	

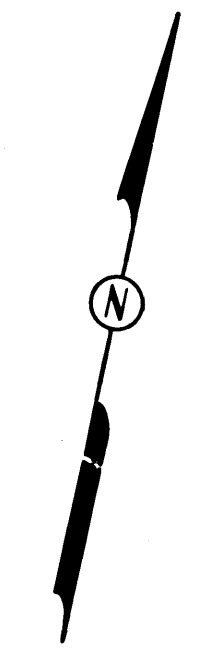
211

10/29-30

DIST	COUNTY	ROUTE	POST MILES	SHEET NO	TOTAL SHEETS
07	LA	60	30.4	2	2

FILED WITH LOS ANGELES COUNTY RECORDER  
AUG 14 1972

*Carl B. Wordley*  
DISTRICT RIGHT OF WAY ENGINEER  
MAY 31, 1972  
DATE



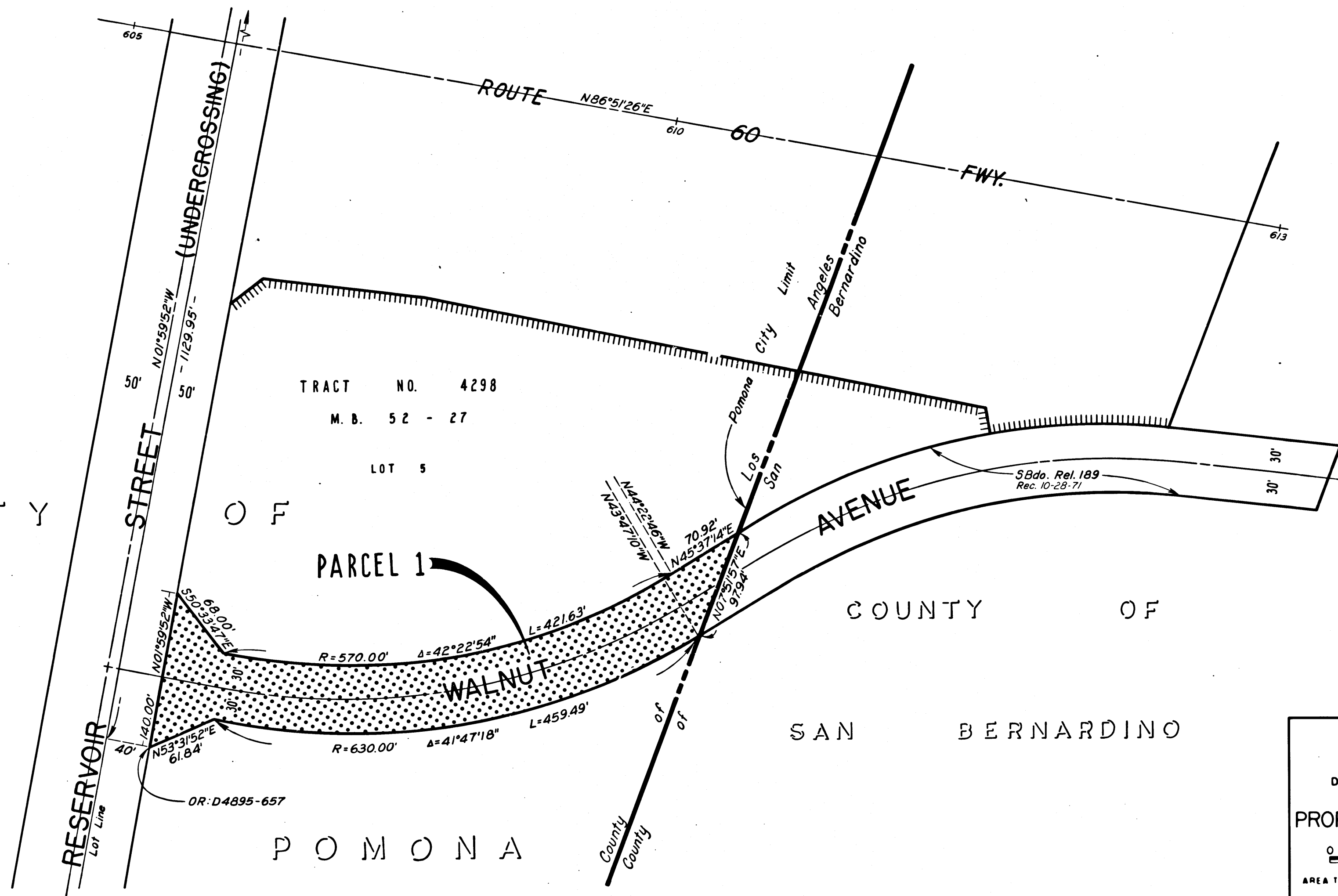
CITY

OF

COUNTY OF

SAN BERNARDINO

POMONA



STATE OF CALIFORNIA  
TRANSPORTATION AGENCY  
DEPARTMENT OF PUBLIC WORKS  
DIVISION OF HIGHWAYS

**PROPOSED RELINQUISHMENT**

0 50 100 150 200

AREA TO BE RELINQUISHED SHOWN THUS ACCESS PROHIBITED

DR'N BY <i>R. KOSINSKI</i>	R/W MAP NO. F-1680-4
C'LC BY <i>O. FRAZIER</i>	CONTRACT NO. 07002614
C'K'D BY <i>H. LEE</i>	<b>REL-784</b>
REVISED	

COUNTY ENGINEER'S COPY