

DIST	COUNTY	ROUTE	POST MILES	SHEET NO.	TOTAL SHEETS
07	LA	90	3.2/3.9	1	4

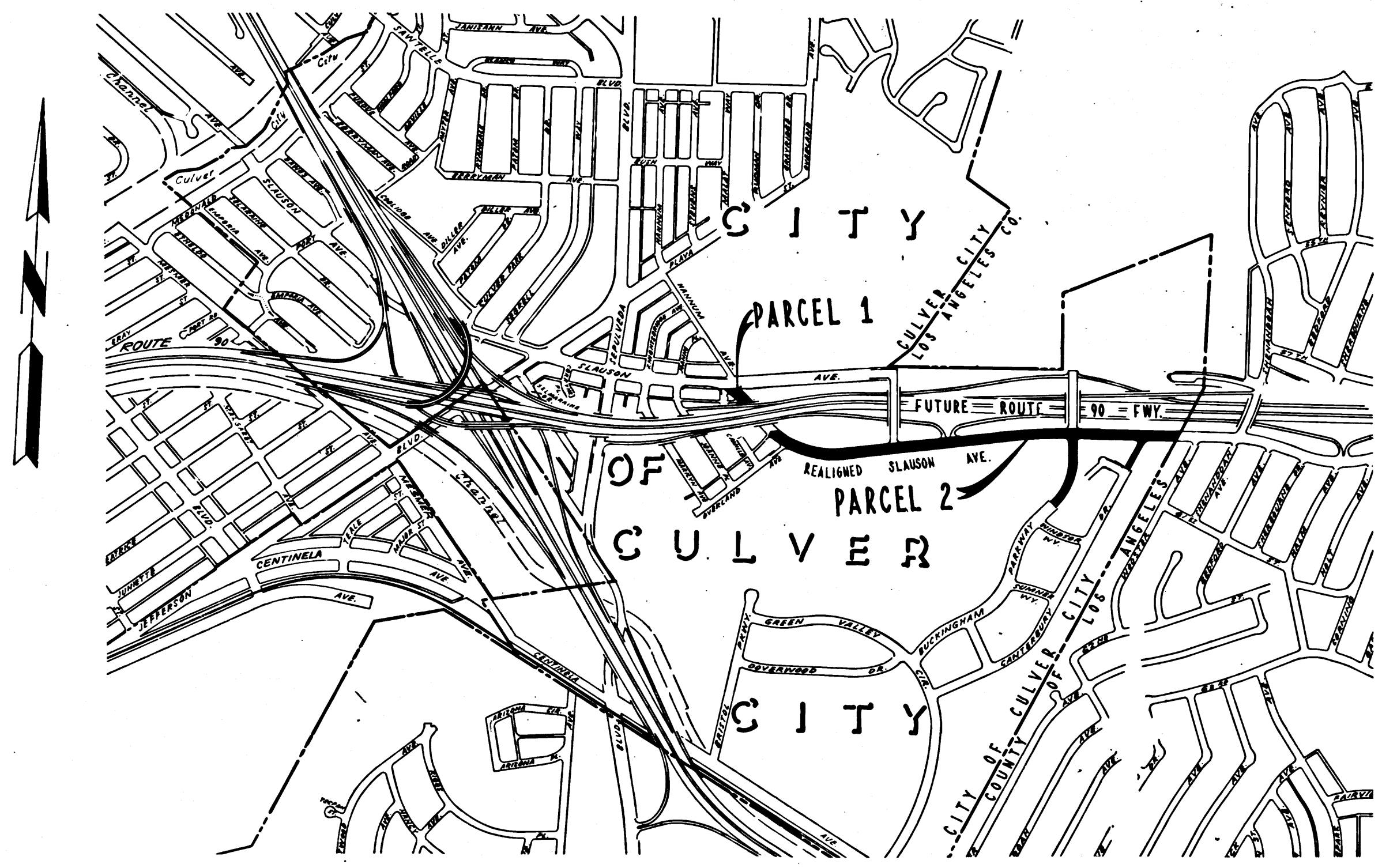
STATE OF CALIFORNIA  
 TRANSPORTATION AGENCY  
 DEPARTMENT OF PUBLIC WORKS  
 DIVISION OF HIGHWAYS

*A. L. Humelbock*  
 DEPUTY DISTRICT ENGINEER  
 REGISTERED CIVIL ENGINEER NO. 6416  
 AUGUST 28, 1972  
 DATE

RIGHT OF WAY MAPS OF  
**STATE HIGHWAY**  
**In the City of Culver City Along Realigned Slauson Ave.**  
**Between Hannum Ave. and Culver City/Los Angeles County Line.**

2280

FILED  
 AT REQUEST OF  
 DEPT. OF PUBLIC WORKS  
 OCT. 26, 1972  
 10:00 AM  
 IN BOOK 10  
 AT PAGE 48  
 OF STATE HIGHWAY MAPS  
 LOS ANGELES COUNTY, CALIF.  
 COUNTY RECORDER  
 BY Deputy Fred



STATE OF CALIFORNIA  
 TRANSPORTATION AGENCY  
 DEPARTMENT OF PUBLIC WORKS  
 DIVISION OF HIGHWAYS

**PROPOSED RELINQUISHMENT**

0 600 1200 1800 2400

AREA TO BE RELINQUISHED SHOWN THUS

DR'N BY H.L.	R/W MAP NO. F-2142
C'LC BY M.R.	CONTRACT NO. 07-099634
C'KD BY H.W.	<b>REL- 851</b>
REVISED	

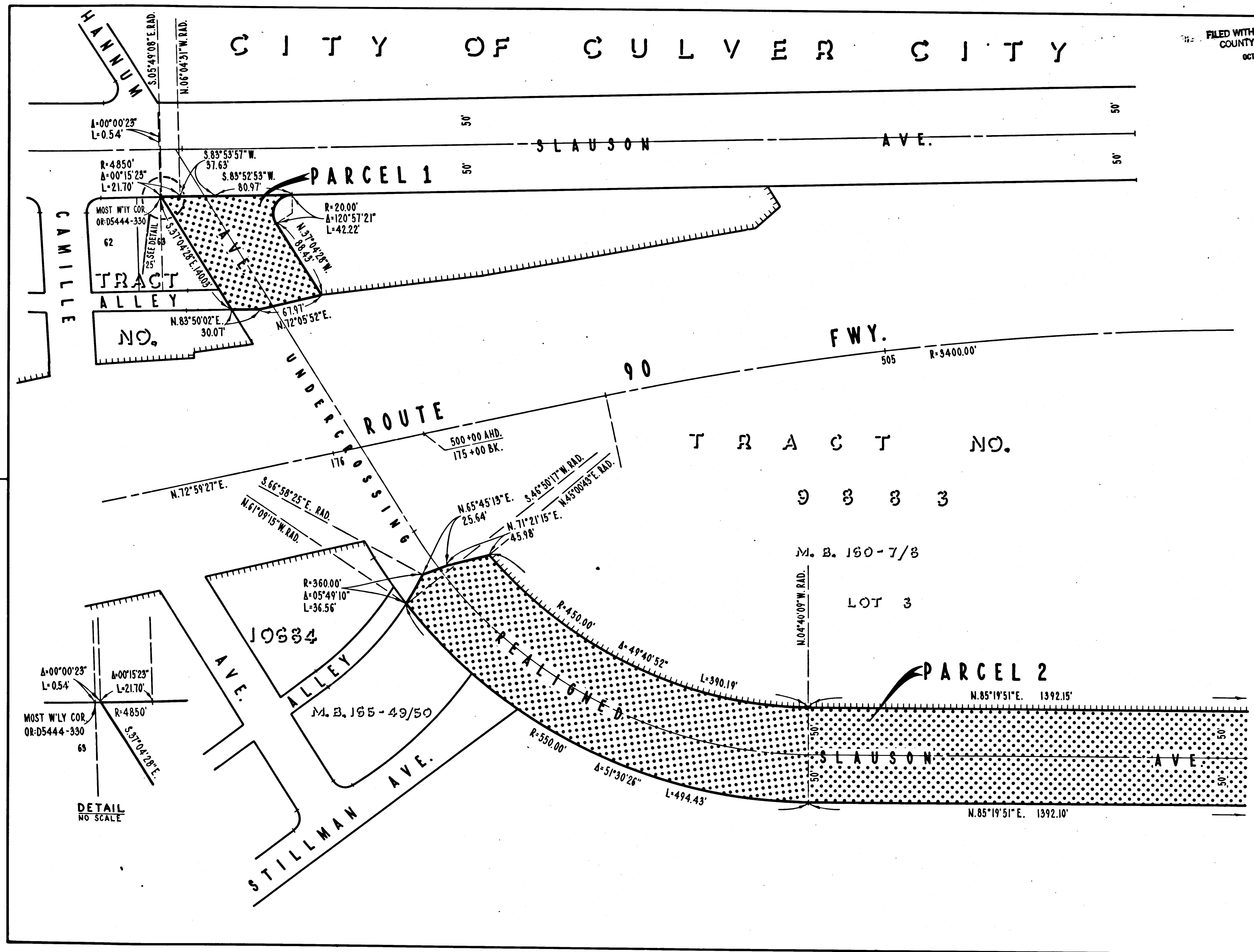
COUNTY ENGINEER'S COPY

FILED WITH LOS ANGELES COUNTY RECORDER  
OCT 26 1972

DIST	COUNTY	ROUTE	POST MILES	SHEET NO	TOTAL SHEETS
07	LA	90	3.2/3.9	2	4

# CITY OF CULVER CITY

*R.W. Felt*  
DISTRICT RIGHT OF WAY ENGINEER  
AUGUST 28, 1972  
DATE



STATE OF CALIFORNIA  
TRANSPORTATION AGENCY  
DEPARTMENT OF PUBLIC WORKS  
DIVISION OF HIGHWAYS

### PROPOSED RELINQUISHMENT

0 50 100 150 200

AREA TO BE RELINQUISHED SHOWN THUS

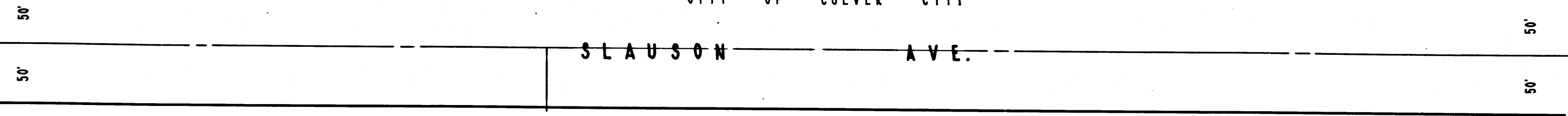
ACCESS PROHIBITED

DR'N BY H. LEE	R/W MAP NO. F-2142-3
C/LC BY M.R.	CONTRACT NO. 07-099634
C/K'D BY H.W.	REL-851
REVISED	

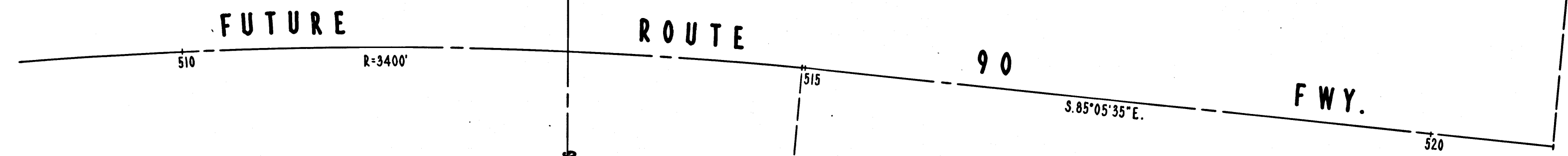
FILED WITH LOS ANGELES  
COUNTY RECORDER  
OCT 26 1972

DIST	COUNTY	ROUTE	POST MILES	SHEET NO.	TOTAL SHEETS
07	LA	90	3.2/3.9	3	4

COUNTY OF LOS ANGELES  
CITY OF CULVER CITY



*RWF*  
DISTRICT RIGHT OF WAY ENGINEER  
AUGUST 28, 1972  
DATE

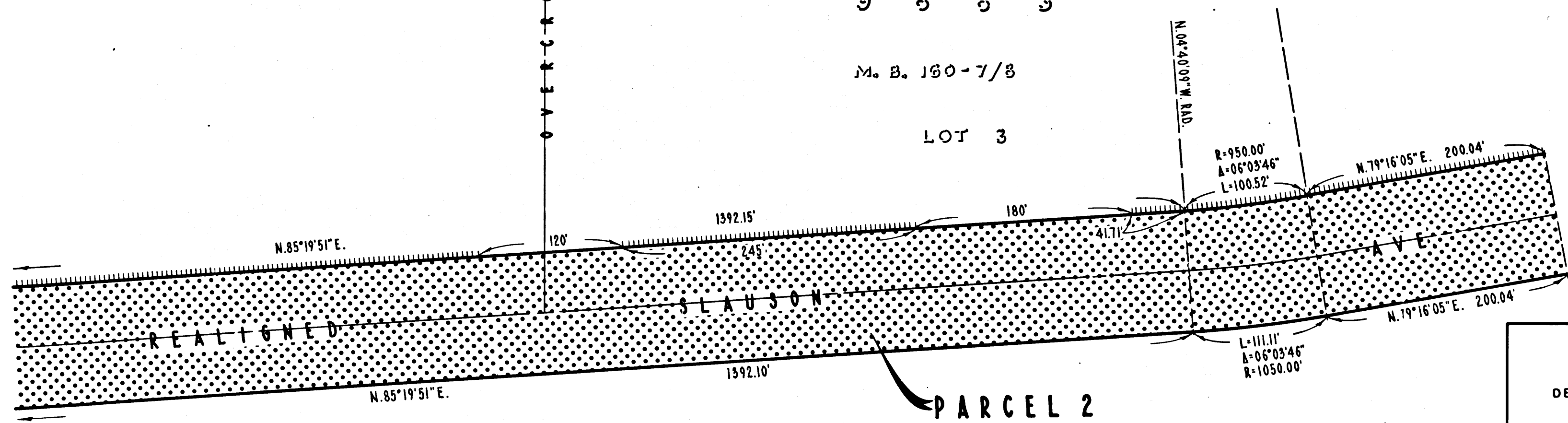


T R A C T N O.

9 3 3 3

M. B. 160-7/8

LOT 3



C I T Y O F C U L V E R C I T Y

STATE OF CALIFORNIA  
TRANSPORTATION AGENCY  
DEPARTMENT OF PUBLIC WORKS  
DIVISION OF HIGHWAYS

**PROPOSED RELINQUISHMENT**

0 50 100 150 200

AREA TO BE RELINQUISHED SHOWN THUS

ACCESS PROHIBITED

DR'N BY H.L.	R/W MAP NO. F-2142-4
C'LC BY M.R.	CONTRACT NO. 07-099634
CK'D BY H.W.	REL- 851
REVISED	



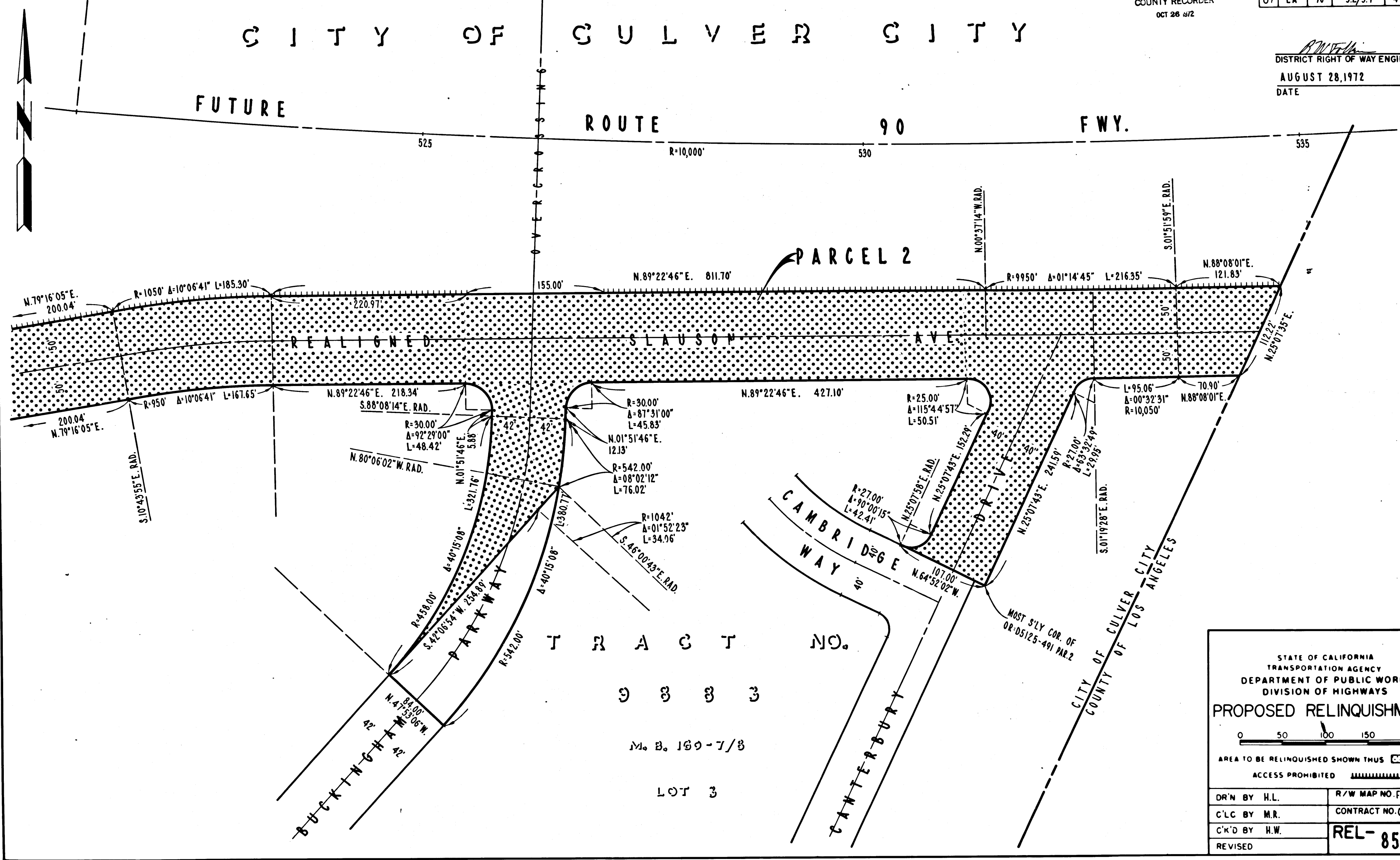
FILED WITH LOS ANGELES COUNTY RECORDER  
OCT 26 1972

DIST	COUNTY	ROUTE	POST MILES	SHEET NO	TOTAL SHEETS
07	LA	90	32/39	4	4

*B.W.F.H.*  
DISTRICT RIGHT OF WAY ENGINEER  
AUGUST 28, 1972  
DATE

CITY OF CULVER CITY

FUTURE ROUTE 90 FWY.



STATE OF CALIFORNIA  
TRANSPORTATION AGENCY  
DEPARTMENT OF PUBLIC WORKS  
DIVISION OF HIGHWAYS

**PROPOSED RELINQUISHMENT**

0 50 100 150 200

AREA TO BE RELINQUISHED SHOWN THUS

ACCESS PROHIBITED

DR'N BY H.L.	R/W MAP NO. F-2142-566
C'LC BY M.R.	CONTRACT NO. 07-099634
CK'D BY H.W.	REL-851
REVISED	