

DIST	COUNTY	ROUTE	POST MILES	SHEET NO.	TOTAL SHEETS
07	L.A.	60	238-263	7	3

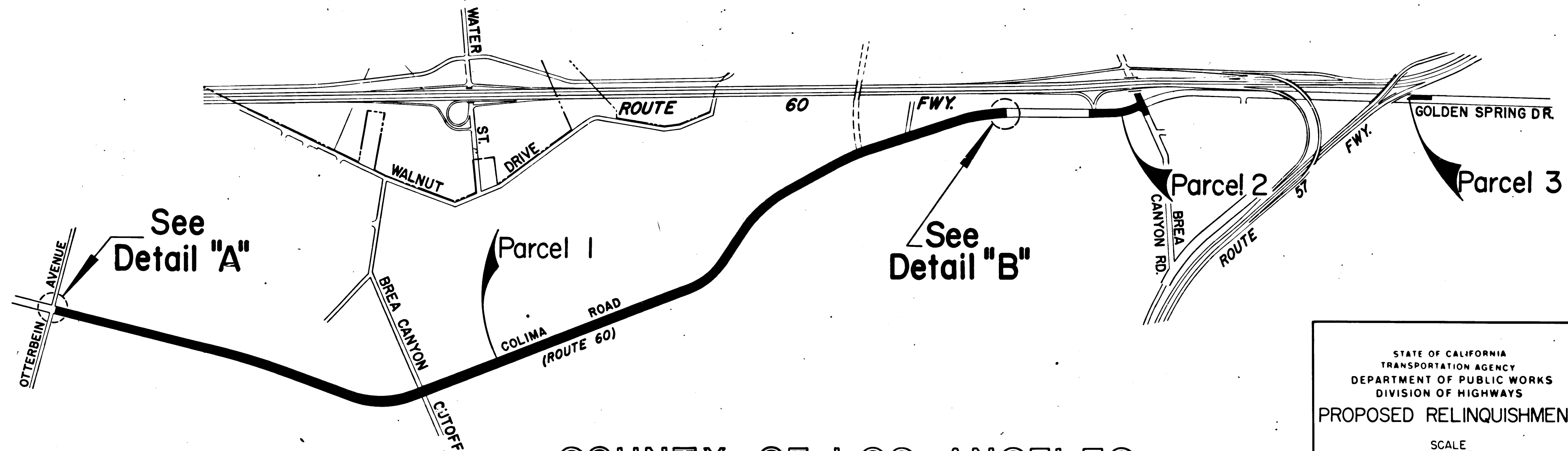
STATE OF CALIFORNIA  
 TRANSPORTATION AGENCY  
 DEPARTMENT OF PUBLIC WORKS  
 DIVISION OF HIGHWAYS

*A. J. Hummelhoed*  
 DEPUTY DISTRICT ENGINEER  
 REGISTERED CIVIL ENGINEER NO. 6416  
 September 29, 1972  
 DATE

RIGHT OF WAY MAPS OF  
 STATE HIGHWAY

In the County of Los Angeles on Colima Road (Route 60)  
 between Otterbein Ave. and Brea Canyon Road.

Also on Golden Springs Dr. 0.1 Mile East of Route 57/60 Fwy interchange.



COUNTY OF LOS ANGELES

3141  
 FILED  
 AT REQUEST OF  
 DEPT. OF PUBLIC WORKS  
 DEC. 19, 1972  
 41 PAST 1 PM  
 IN BOOK 10  
 AT PAGE 61-63  
 OF STATE HIGHWAY MAPS  
 LOS ANGELES COUNTY, CALIF.  
 COUNTY RECORDER  
*[Signature]*  
 Deputy  
 Fee

STATE OF CALIFORNIA  
 TRANSPORTATION AGENCY  
 DEPARTMENT OF PUBLIC WORKS  
 DIVISION OF HIGHWAYS

PROPOSED RELINQUISHMENT

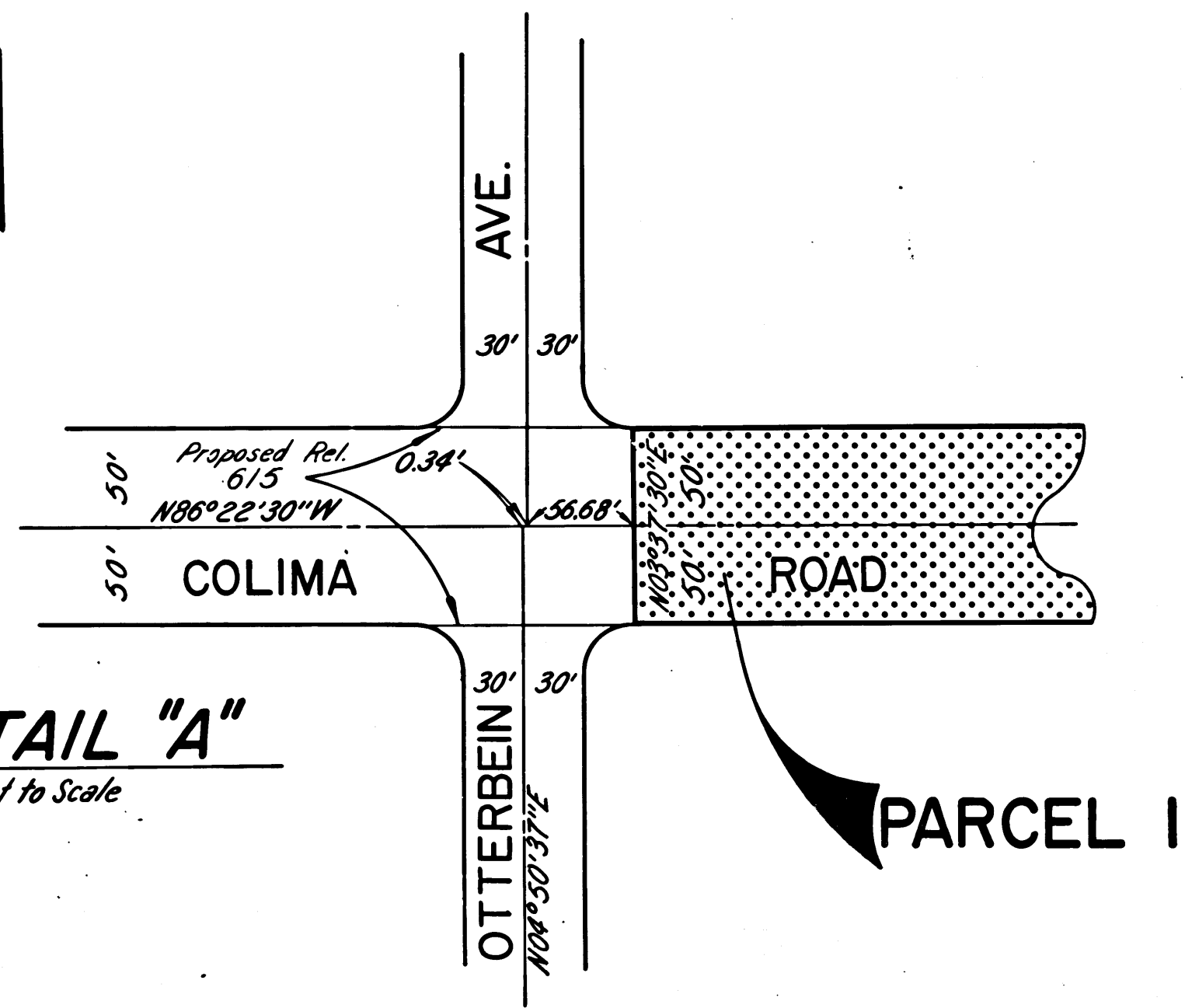
SCALE  
 0 600 1200 1800 2400

DR'N BY <i>U. Kuehn</i>	R/W MAP NO. <i>2-5323</i>
C'LC BY <i>J. Morris</i>	CONTRACT NO. <i>036394</i>
C'K'D BY <i>H. Lee</i>	<b>REL-828</b>
REVISED	

DIST	COUNTY	ROUTE	POST MILES	SHEET NO	TOTAL SHEETS
07	L.A.	60	238-265	2	3

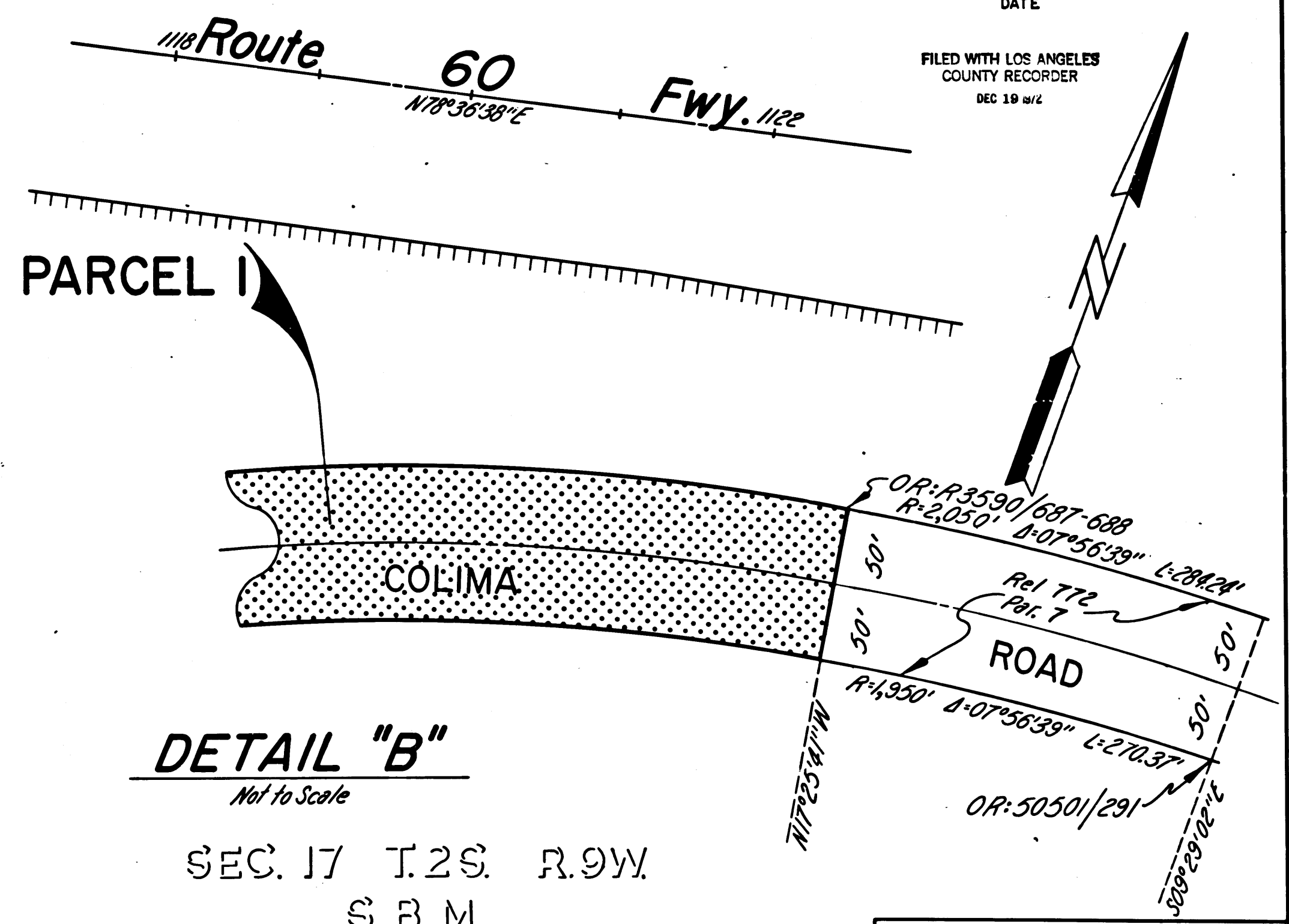
*Carl B. Mordley*  
 DISTRICT RIGHT OF WAY ENGINEER  
 REGISTERED CIVIL ENGINEER NO. 14734  
 September 28, 1972  
 DATE

FILED WITH LOS ANGELES  
 COUNTY RECORDER  
 DEC 19 1972



**DETAIL "A"**  
 Not to Scale

COUNTY OF LOS ANGELES



**DETAIL "B"**  
 Not to Scale

SEC. 17 T.2S. R.9W.  
 S. B. M.

COUNTY OF  
 LOS ANGELES

STATE OF CALIFORNIA  
 TRANSPORTATION AGENCY  
 DEPARTMENT OF PUBLIC WORKS  
 DIVISION OF HIGHWAYS  
**PROPOSED RELINQUISHMENT**

AREA TO BE RELINQUISHED SHOWN THUS ACCESS PROHIBITED

DR'N BY <i>U. Kuehn</i>	R/W MAP NO. <i>P-5323</i>
C/LC BY <i>J. Morris</i>	CONTRACT NO. <i>036334</i>
C/K'D BY <i>H. Lee</i>	<b>REL-828</b>
REVISED	

