

DIST	COUNTY	ROUTE	POST MILES	SHEET NO.	TOTAL SHEETS
07	L.A.	10	44.2	1	2

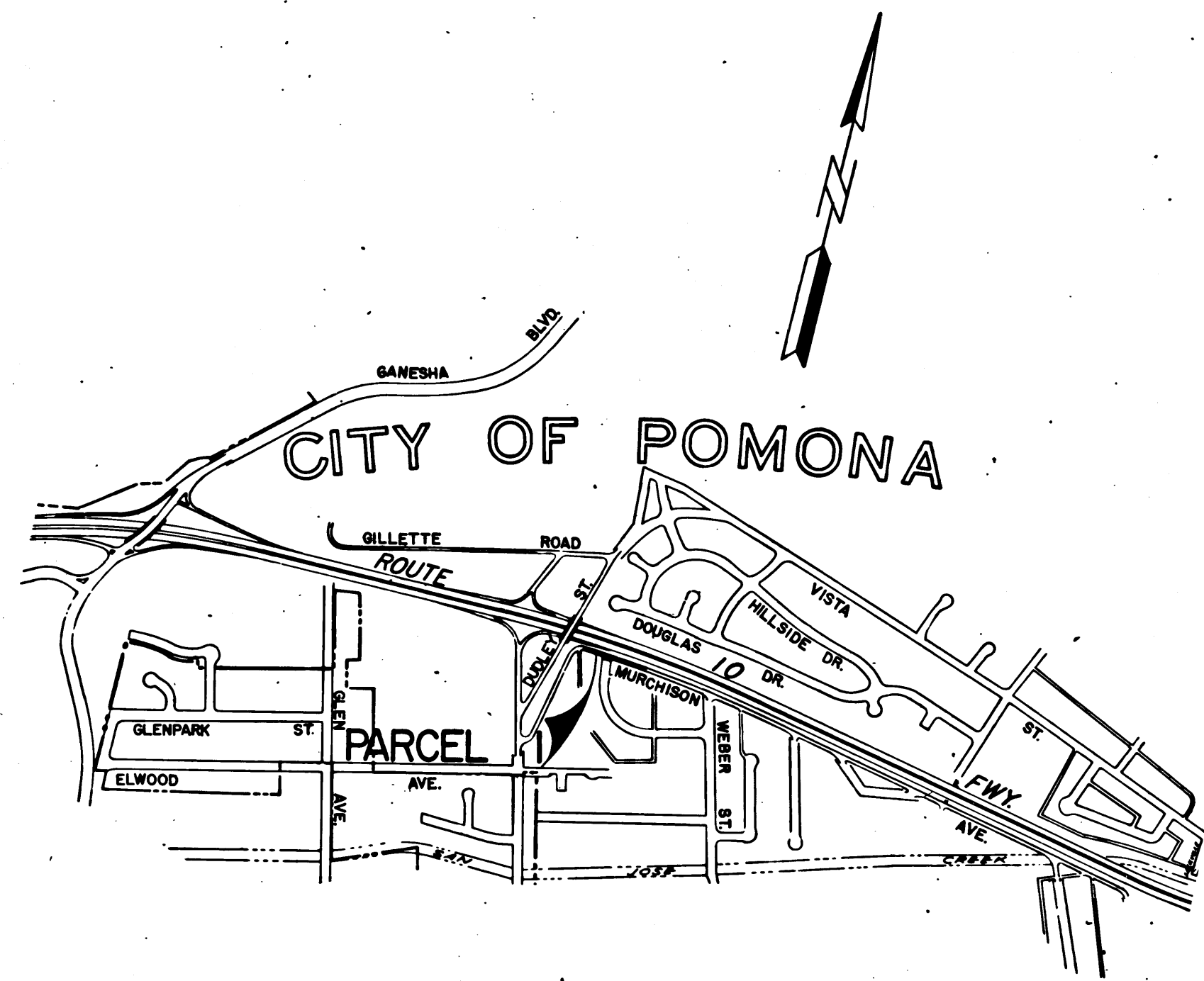
STATE OF CALIFORNIA
 TRANSPORTATION AGENCY
 DEPARTMENT OF PUBLIC WORKS
 DIVISION OF HIGHWAYS

A. Hinkel
 DEPUTY DISTRICT ENGINEER
 REGISTERED CIVIL ENGINEER NO. 6416
 March 28, 1973
 DATE

RIGHT OF WAY MAPS OF
STATE HIGHWAY
 In the City of Pomona on Murchison Ave.
 between Dudley St. and 500 Feet east of Dudley St.

2228

FILED
 AT REQUEST OF
 DEPT. OF PUBLIC WORKS
 MAY 22, 1973
 9:11 AM
 IN BOOK 10
 AT PAGE 98
 OF STATE HIGHWAY MAPS
 LOS ANGELES COUNTY, CALIF.
 COUNTY REFORMER
 Free



INTERSTATE
 STATE OF CALIFORNIA
 TRANSPORTATION AGENCY
 DEPARTMENT OF PUBLIC WORKS
 DIVISION OF HIGHWAYS
PROPOSED RELINQUISHMENT

0 600 1200 1800 2400

AREA TO BE RELINQUISHED SHOWN THUS ██████████

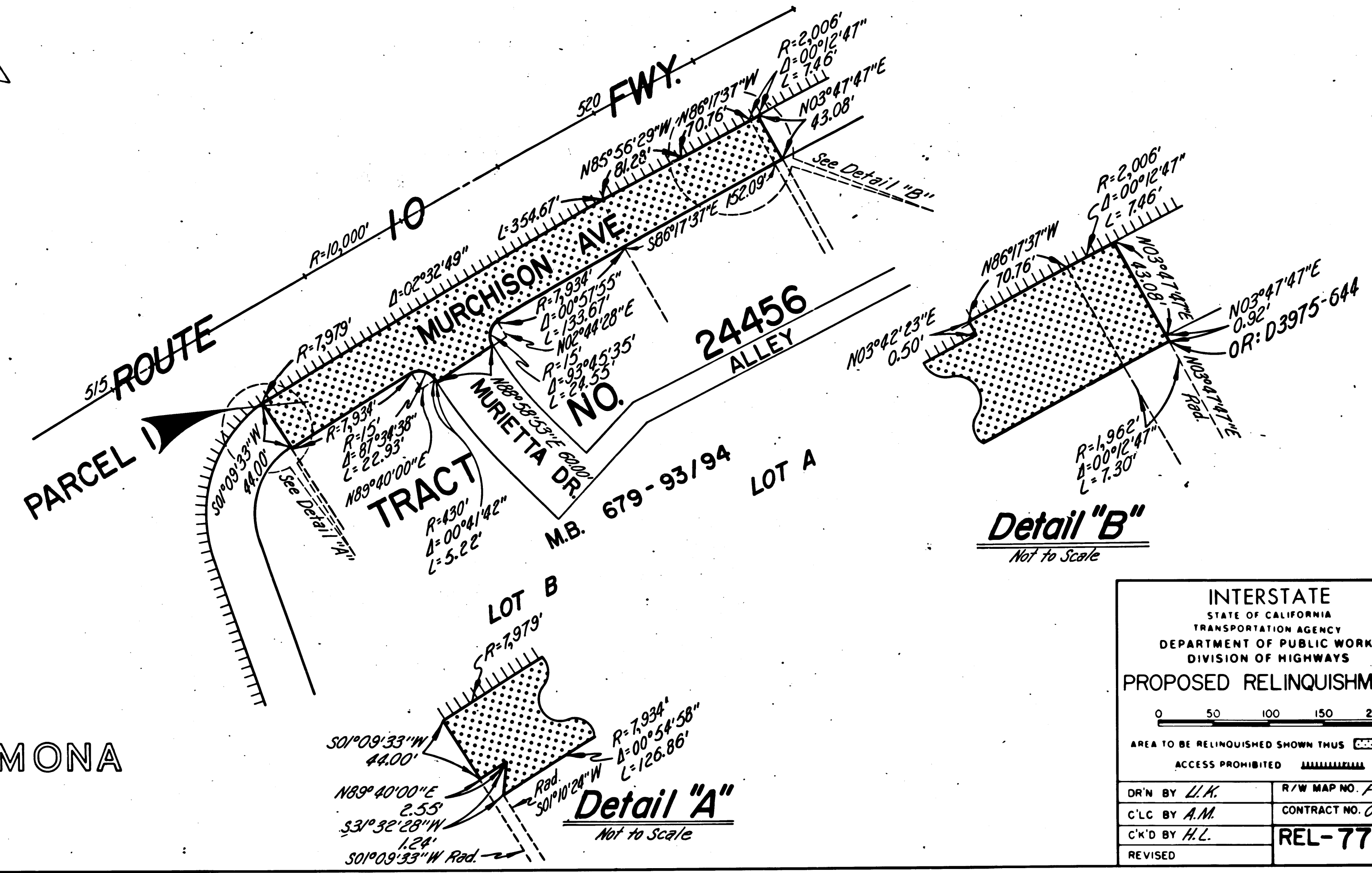
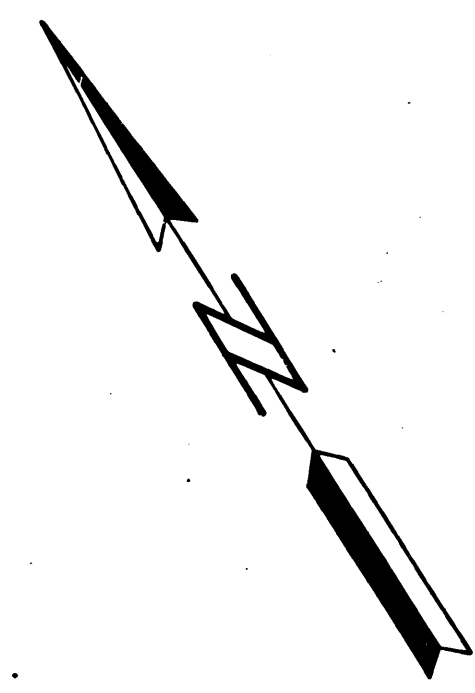
DR'N BY <i>L.K.</i>	R/W MAP NO. <i>F-1869</i>
C'LC BY <i>A.M.</i>	CONTRACT NO. <i>038834</i>
C'K'D BY <i>H.L.</i>	REL-770
REVISED	

10/98-77

DIST	COUNTY	ROUTE	POST MILES	SHEET NO.	TOTAL SHEETS
07	L.A.	10	44.2	2	2

FILED WITH LOS ANGELES COUNTY RECORDER
MAY 22 1973

Carl B. Morley
DISTRICT RIGHT OF WAY ENGINEER
REGISTERED CIVIL ENGINEER NO. 14734
March 28, 1973
DATE



CITY OF POMONA

INTERSTATE
STATE OF CALIFORNIA
TRANSPORTATION AGENCY
DEPARTMENT OF PUBLIC WORKS
DIVISION OF HIGHWAYS

PROPOSED RELINQUISHMENT

0 50 100 150 200

AREA TO BE RELINQUISHED SHOWN THUS

ACCESS PROHIBITED

DR'N BY <i>L.K.</i>	R/W MAP NO. <i>F-1869</i>
C'LC BY <i>A.M.</i>	CONTRACT NO. <i>038837</i>
C'KD BY <i>H.L.</i>	REL-770
REVISED	