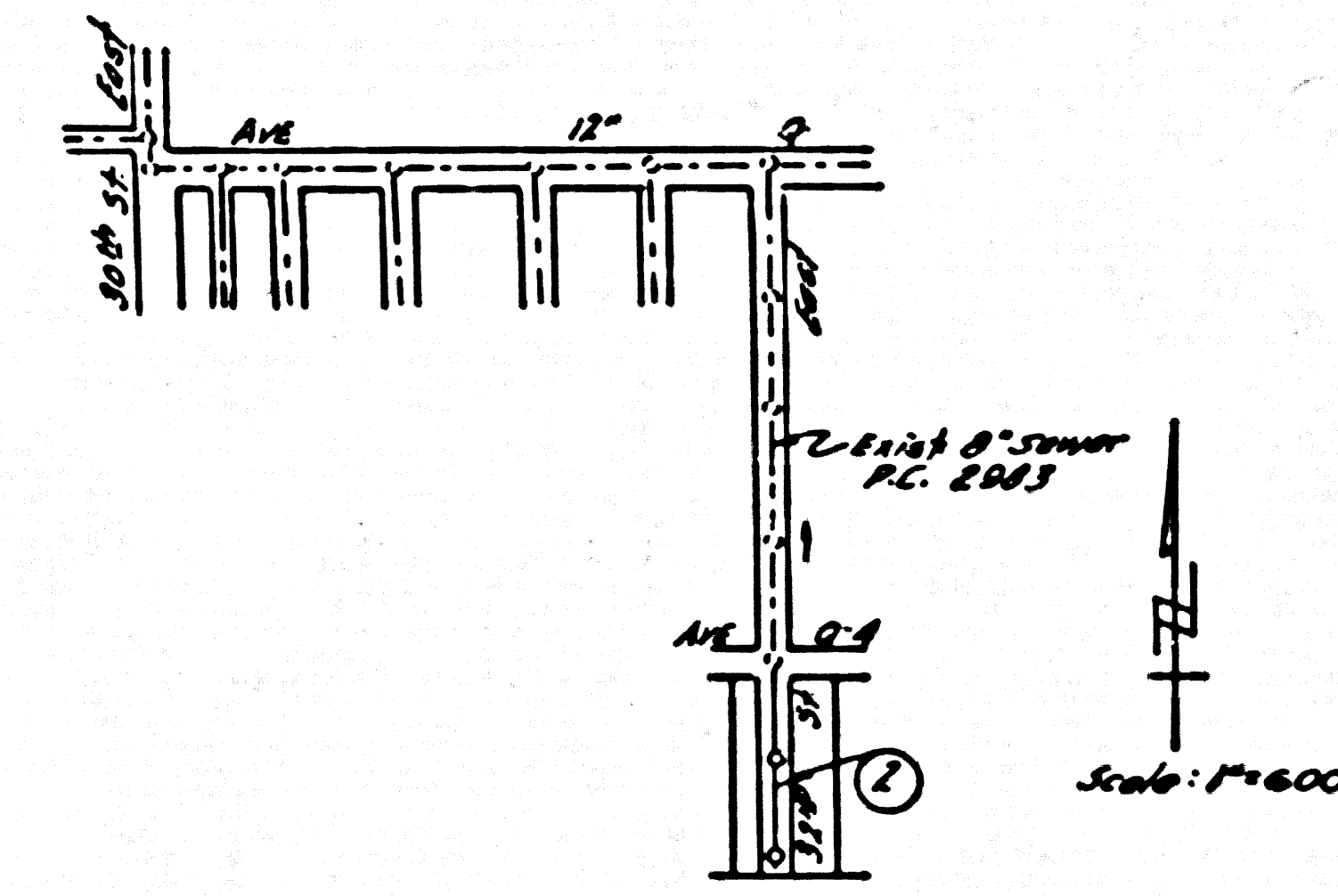


PALMDALE BLDG. DIST. NO. 8.1

PROFILE ALIGNMENT AND GRADE OF P.C. 3970
 SANITARY SEWERS PAGE 1
 TO BE CONSTRUCTED IN
 TRACT No 22670 (25078)

B.M. EL. 2599.161 U.S. 2168, abt. 2.8 mi. E. along State Hwy 138 from S.P.R.R. Sta. at Palmdale at a dirt rd. crossing 36' W. of the E. of the rd., 3/4' N. of the E. of the Hwy. 4' 18" N.W. of curb 19' 18", A U.S.G.S. steel disk stamped L.S. 26-1929 & set in top of conc. post. 246 US 6-145 adj. 11 2598.919 Sub. 0.24' from Elev. hereon to be on U.S. 2168



INDEX MAP
 TRACT No 22670
 P.C. 3970

- NOTES
- PROVIDE STAKES ON THE PROPERTY LINE OR PROPERTY LINES PRODUCED AT RIGHT ANGLES TO THE SEWER LINE AT THE CENTER LINE OF EACH MANHOLE.
 - NO REPRESENTATIVE OF THE COUNTY ENGINEER WILL SURVEY OR LAYOUT ANY PORTION OF THE WORK.
 - THE OWNER OR HIS AUTHORIZED REPRESENTATIVE SHALL FURNISH THE COUNTY ENGINEER WITH GRADE SHEETS AND STATION FOR ALL HOUSE LATERALS AND Y BRANCHES AND SHALL PROVIDE STAKES FOR THEM AT THEIR PROPER LOCATIONS WITH STATIONING PLAINLY MARKED. ANY CHANGE IN LOCATION SHALL BE REQUESTED BY WRITING BY THE OWNER OR HIS REPRESENTATIVE.
 - NO REVISIONS SHALL BE MADE IN THESE PLANS WITHOUT THE APPROVAL OF THE COUNTY ENGINEER.
 - USE STANDARD MANHOLE FRAMES AND COVERS, S.A-117, EXCEPT AS NOTED.
 - USE STANDARD STRENGTH PIPE EXCEPT AS NOTED.
 - USE CEMENT MORTAR FOR ALL WITHIN CLAY PIPE JOINTS.
 - RESURFACE ALL TRENCH WITHIN PAVED AREA TO MEET L.A. COUNTY ROAD DEPT. OR CALIF. STATE HIGHWAY DEPT. REQUIREMENTS IN ACCORDANCE WITH PERMITS.
 - INDICATE FOUR FEET OF SEWER AT POINTS OF INTERFERENCE WITH POLES, S.A-119.
 - HOUSE LATERALS TO BE CONSTRUCTED WITH INVERTS AT PROPERTY LINE, 6" NET BELOW CURB GRADE EXCEPT AS NOTED.
 - ALL STRUCTURES SHALL BE BRICK SEWER STRUCTURES, S.A-104, EXCEPT AS NOTED.
 - FOR ALLOWABLE LEAKAGE TEST USE FORMULA NO. 1, SPEC'S, SEC. 51.
 - MANHOLE TOPS IN UNIMPROVED RIGHTS-OF-WAY TO BE 6" ABOVE FINISHED GRADE.
 - Set all joints with 4" of cement mortar that are within 20' of all property lines.
 - The Private Engineer is to furnish the House Lateral depths at the property line below the top of curb E.L. for each House Lateral, on the Grade Sheet.

NO CHARGE FOR CONNECTIONS
 Utilities 7-1-56

PRIVATE CONTRACT NO. 3970
 W.S. 65
 1 SHEETS, 2 PAGES
 SCALE: 1" = 4' APRIL, 1956
 PREPARED IN THE OFFICES OF
R.L. STUCKEY CO.
 REG. C. E. NO. 6067
 FOR LEGEND SEE PLAN NO. S-A-64

NOTES

GRADES TO WHICH THIS IMPROVEMENT IS TO BE CONSTRUCTED ARE SHOWN ON PLANS AND PROFILES. GRADE POINTS FOR TOP OF CURB, CENTER LINE OF STREETS, OR CENTER LINE OF ALLEYS ARE SHOWN BY CIRCLES ON PROFILES AT ALL POINTS BETWEEN DESIGNATED POINTS THE GRADE SHALL BE ESTABLISHED SO AS TO CONFORM TO A STRAIGHT LINE DRAWN BETWEEN SAID DESIGNATED POINTS.

REVISIONS AND INCREASES ABOVE U.S.C. & G.S. 5th Edition Edition of 1929

THIS DRAWING AND THE DATA HEREON ARE HEREBY MADE A PART OF THE SPECIFICATIONS FOR THE CONSTRUCTION AND SHALL BE CONSIDERED AS SUCH BY THE CONTRACTOR. THE CONTRACTOR SHALL BE RESPONSIBLE FOR THE ACCURACY OF THE DATA AND SHALL BE PROSECUTED ONLY IN THE PRESENCE OF THE COUNTY ENGINEER.

BEFORE WORK CAN BE STARTED, THE CONTRACTOR MUST OBTAIN A PERMIT TO EXCAVATE IN COUNTY STREETS FROM THE L.A. COUNTY ROAD DEPT. 100 W. 3RD ST. AND MAKE A DEPOSIT WITH THE COUNTY ENGINEER, ROOM 124 FARM ANGLEMAN BLDG. 332 SO. BROADWAY SUFFICIENT TO COVER THE COST OF CONSTRUCTION INSPECTION AND RECORD PLANS.

APPROVAL OF THIS PLAN BY THE COUNTY OF LOS ANGELES DOES NOT CONSTITUTE A REPRESENTATION AS TO THE ACCURACY OF THE LOCATION OF OR THE EXISTENCE OR NON-EXISTENCE OF ANY UNDERGROUND UTILITY PIPE, OR STRUCTURE WITHIN THE LIMITS OF THIS PROJECT THIS NOTE APPLIES TO ALL PAGES.

IF WORK IS TO BE DONE ON A STATE HIGHWAY, A PERMIT MUST BE OBTAINED FROM THE STATE OF CALIFORNIA, DIVISION OF HIGHWAYS, 126 SOUTH SPRING STREET.

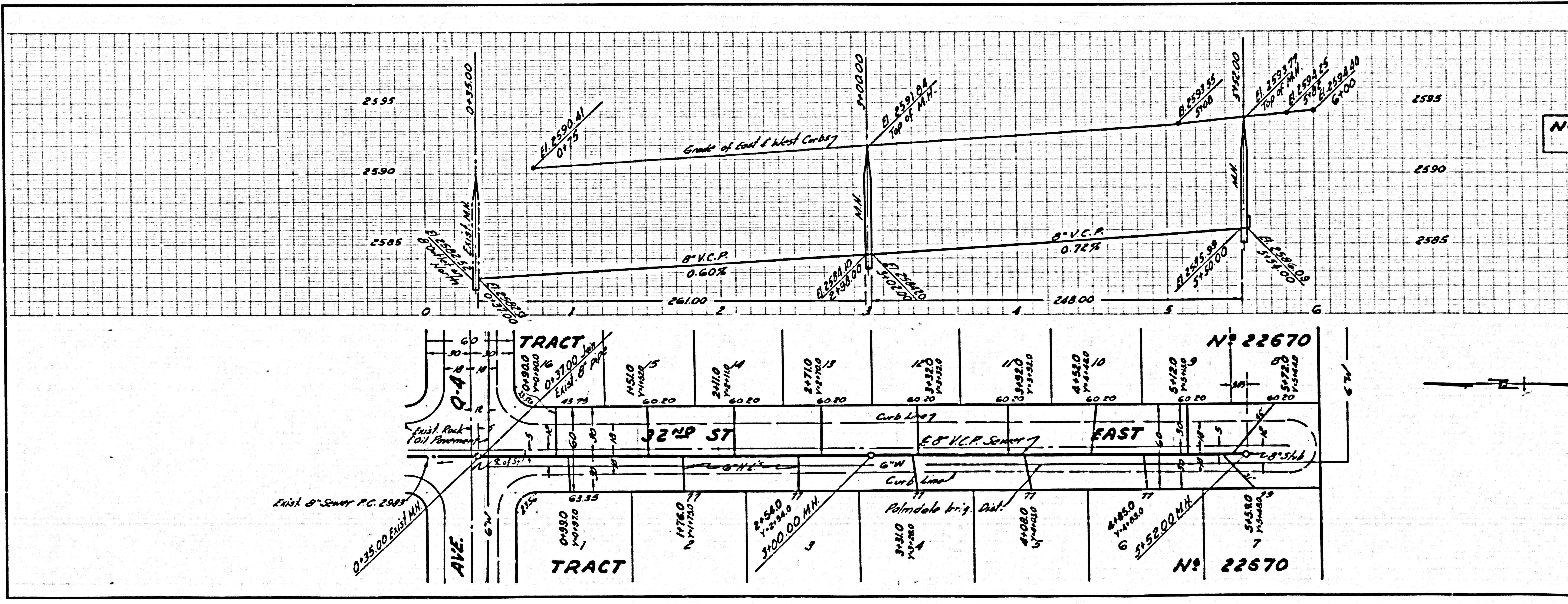
COUNTY OF LOS ANGELES, CALIFORNIA

APPROVED, JOHN A. LAMB, COUNTY ENGINEER
 APPROVED, A. M. BAWN, CHIEF ENGINEER
 CO. SAN. DIST. NO. 20
 BY A.P. Collins SANITATION ENGINEER BY A. M. Bawn OFFICE ENGINEER
 CHECKED BY E.K. Oude 8-1-56
 OFFICE OF COUNTY ENGINEER, 802 C. E. NO. 9406

P.C. 3970 PAGE 2

(25079)

NO CHARGE FOR CONNECTIONS



P.C. 3970