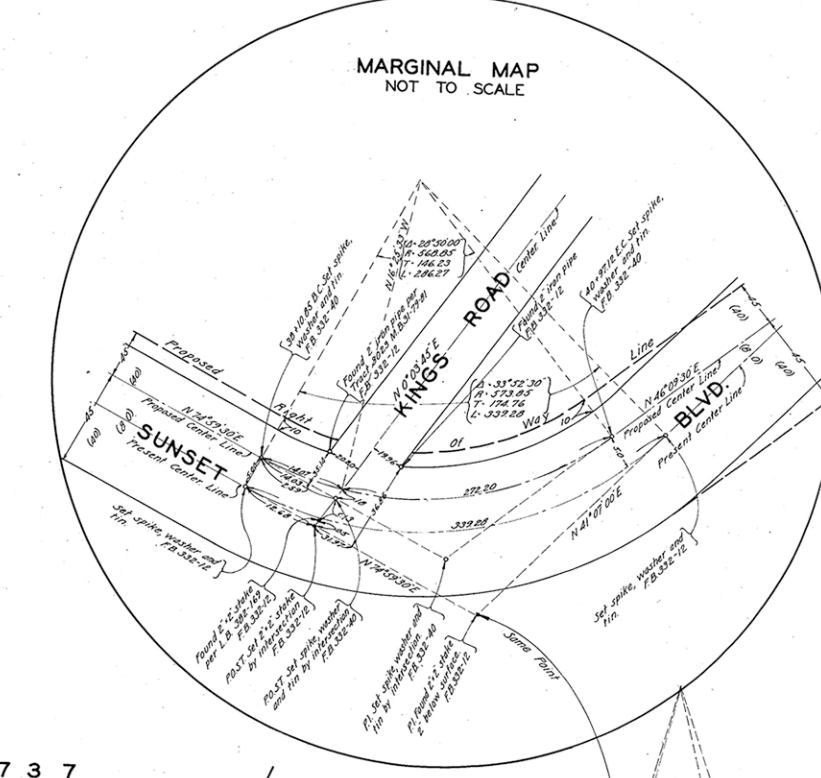


Note: Los Angeles County Ordinance No. 2716 (New Series) - April 6, 1936, established the building set-back lines on Sunset Blvd between Horn Avenue and the Eastern boundary of Los Angeles City 45 feet each side of the line called "Traverse Center Line" on this map. The established set-back lines are not the same as the proposed Right of Way lines shown on this map.

THIS LINE HAS BEEN ABANDONED FOR LATER LOCATION. SEE MARGINAL MAP ABOVE.



MAP OF
SUNSET BOULEVARD
 FROM
 HORN AVENUE
 TO
 WESTERY BDY CITY OF LOS ANGELES
 COUNTY SURVEYORS MAP NO. B154
 SCALE - 1 INCH = 50 FT.

ACQUISITION AND IMPROVEMENT DISTRICT NO. 99
 WORK ORDER NO. 11418
 J. ROCKHOLD - COUNTY SURVEYOR
 SURVEYED JAN. 1928
 SURVEYED UNDER INSTRUCTIONS OF THE
 BOARD OF SUPERVISORS PER ORDER DATED
 OCT. 24 1927
 BEARINGS ARE BASED ON THE BEARING OF
 SUNSET BOULEVARD PER C.S. B-150
 P. B. 302 - 11 - 25
 FIELD WORK BY: L. HAMMOND
 OFFICE WORK BY: I. A. YOUNG
 G. A. GROWL
 CHECKED BY: C. J. TERRY
 5/17/22

NOTE: - L.A. County Ordinance No. 2716 (New Series) - April 6, 1936, established the building set-back lines on Sunset Blvd between Horn Ave. and the eastern boundary of Los Angeles City 45 feet each side of the line called "Traverse Center Line" on this map. The established set-back lines are not the same as the proposed Right of Way lines shown on this map.