

MAP OF  
**RED ROVER MINE ROAD**  
 FROM  
 THE NORTH LINE OF SEC. 14-T5N-R.13W-S.B.M.  
 TO

**SIERRA HIGHWAY**  
 COUNTY SURVEYORS MAP NO B-1400  
 SCALE - 1 INCH = 100 FT

JOB NUMBER - 8211

ALFRED JONES - COUNTY SURVEYOR  
 SURVEYED DEC. 1937

SURVEYED AT REQUEST OF THE COUNTY  
 ROAD DEPARTMENT PER RULE 21, ORD. 929

BY LETTER DATED NOV. 30, 1937

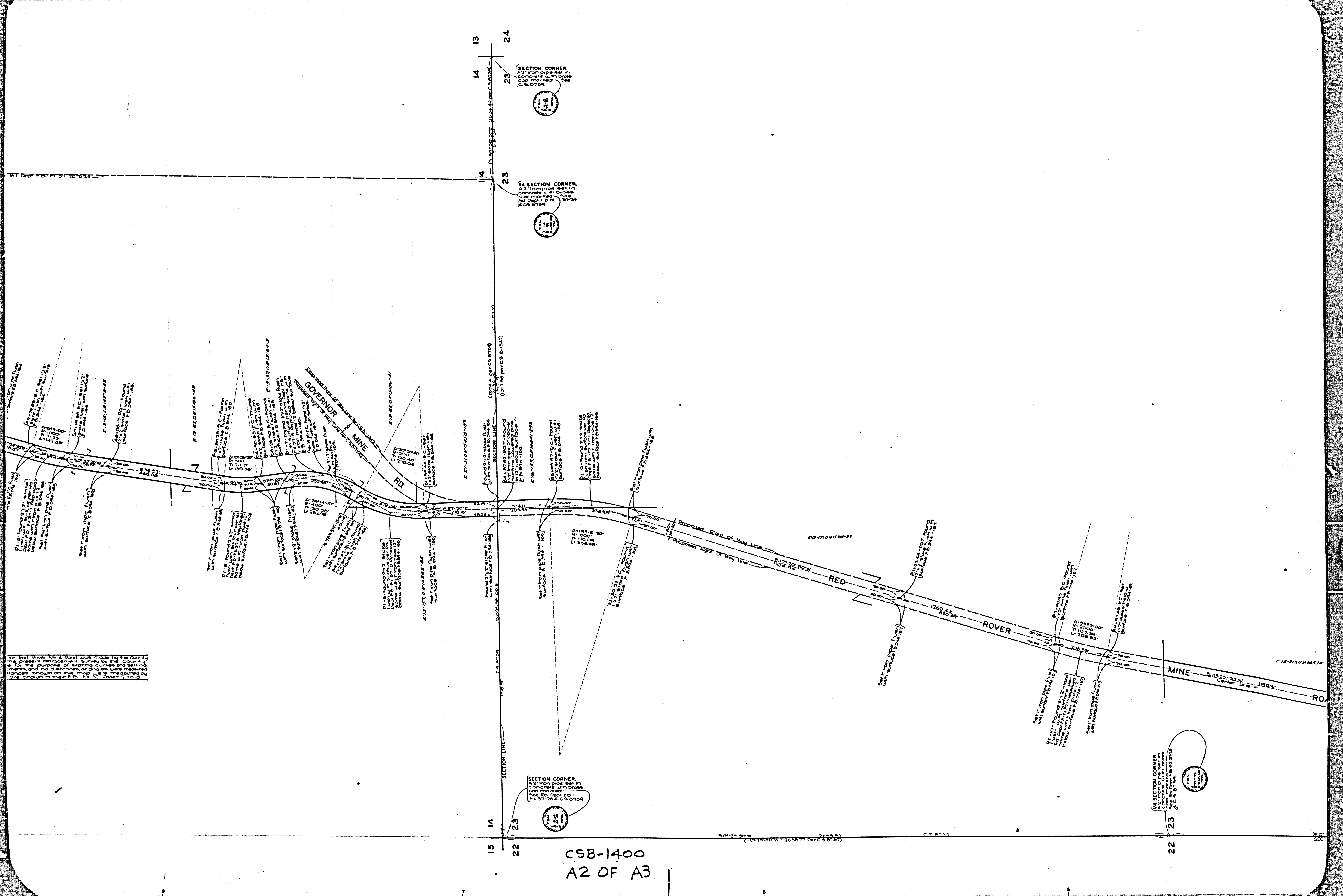
BEARINGS ARE BASED ON THE REARING OF  
 SOUTH LINE SEC. 14-T5N-R.13W AS SHOWN  
 ON C.S. 8739

F.B. 594 - 101-108

FIELD WORK BY...E.A. ROSECRANS  
 OFFICE WORK BY...J.H. REYNOLDS  
 CHECKED BY...K.R. McPHERSON

INDEX 64

CSB-1400  
 A1 OF A3



for Red River Mine Road was made by the County  
 the present retracement curves by the County  
 as for the purpose of mapping curves and setting  
 marks and no distances or angles were measured  
 hence shown on the map were measured by  
 are shown in their P. 27, Page 2, 1916.

SECTION CORNER  
 A 2" iron pipe set in  
 concrete with brass  
 cap marked  
 See P. 27-28 C.S. 8754

SECTION CORNER  
 A 2" iron pipe set in  
 concrete with brass  
 cap marked  
 See P. 27-28 C.S. 8754

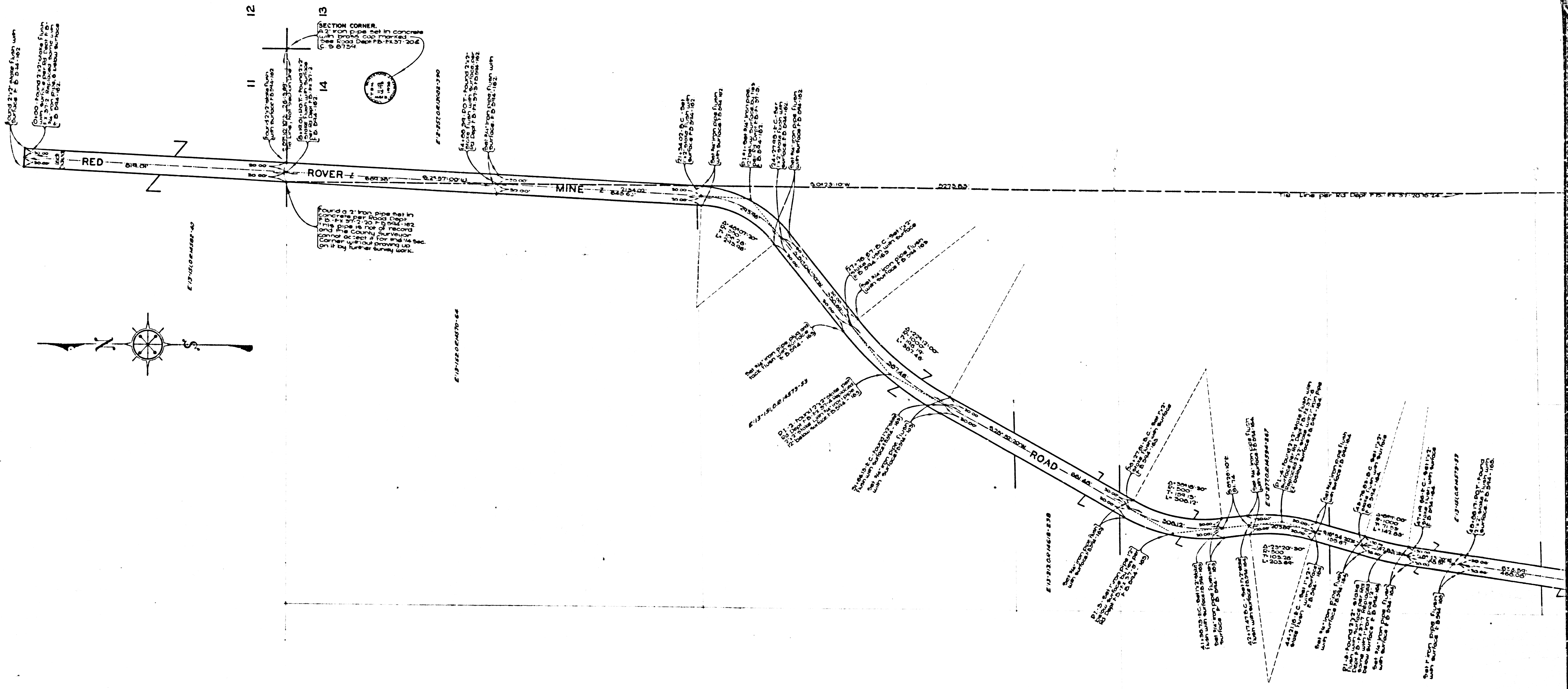
SECTION CORNER  
 A 2" iron pipe set in  
 concrete with brass  
 cap marked  
 See P. 27-28 C.S. 8754

CSB-1400  
 A2 OF A3

60° 25' 30" W  
 2155.00  
 (C.S. 15-30-000-00 - 2656.77 Per C.S. 8754)

C.S. 8754

60° 25' 30" W  
 2155.00  
 (C.S. 15-30-000-00 - 2656.77 Per C.S. 8754)



Found a 2" iron pipe set in concrete per Road Dept. This pipe is not of record and the County Surveyor cannot accept it for the Section Corner without proving up on it by further survey work.

**NOTE:**  
 The location survey for Red Rover Mine Road was made by the County Road Dept in 1924. The present retracement survey by the County Surveyor was made for the purpose of showing curves and setting right of way monuments and no distances or angles were measured. The angles and distances shown on this map were measured by the Road Dept and are shown in their F.D. 11, 27, 33, 34, 35, 36, 37, 38, 39, 40, 41, 42, 43, 44, 45, 46, 47, 48, 49, 50, 51, 52, 53, 54, 55, 56, 57, 58, 59, 60, 61, 62, 63, 64, 65, 66, 67, 68, 69, 70, 71, 72, 73, 74, 75, 76, 77, 78, 79, 80, 81, 82, 83, 84, 85, 86, 87, 88, 89, 90, 91, 92, 93, 94, 95, 96, 97, 98, 99, 100.

CSB-1400  
 A3 OF A3