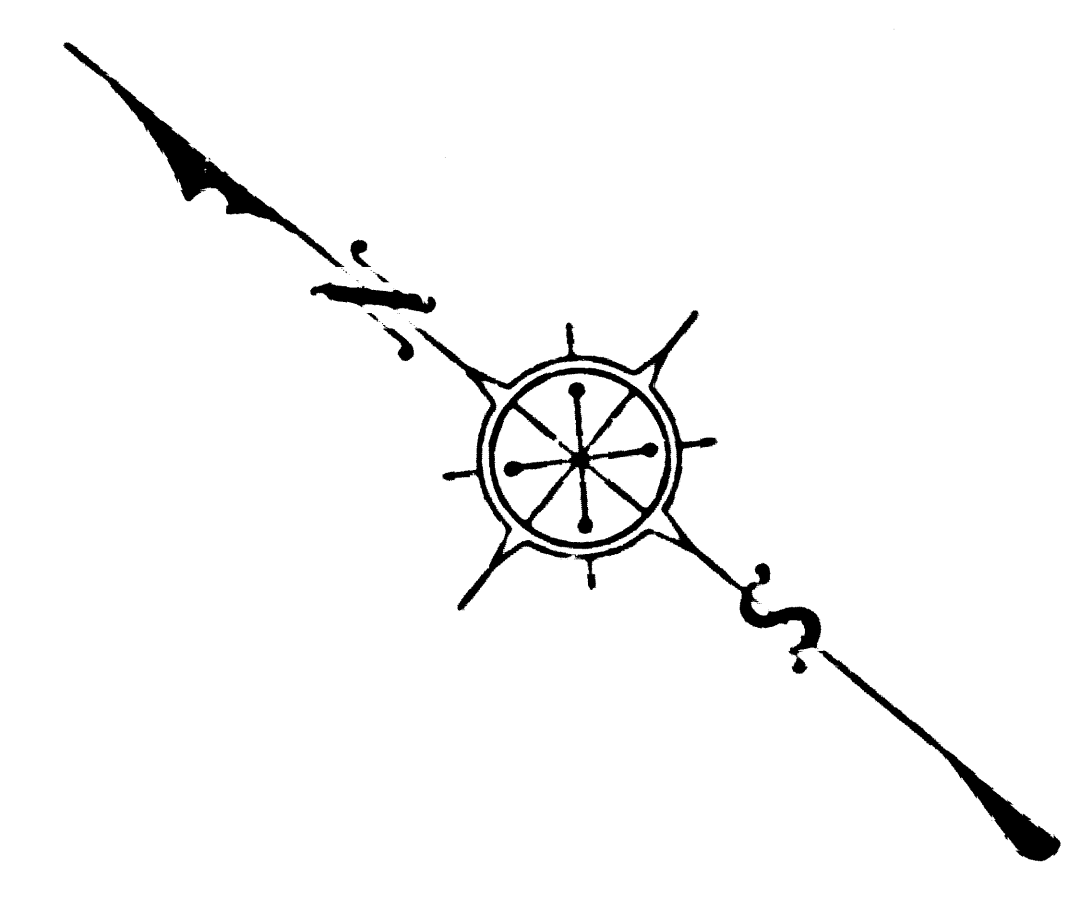
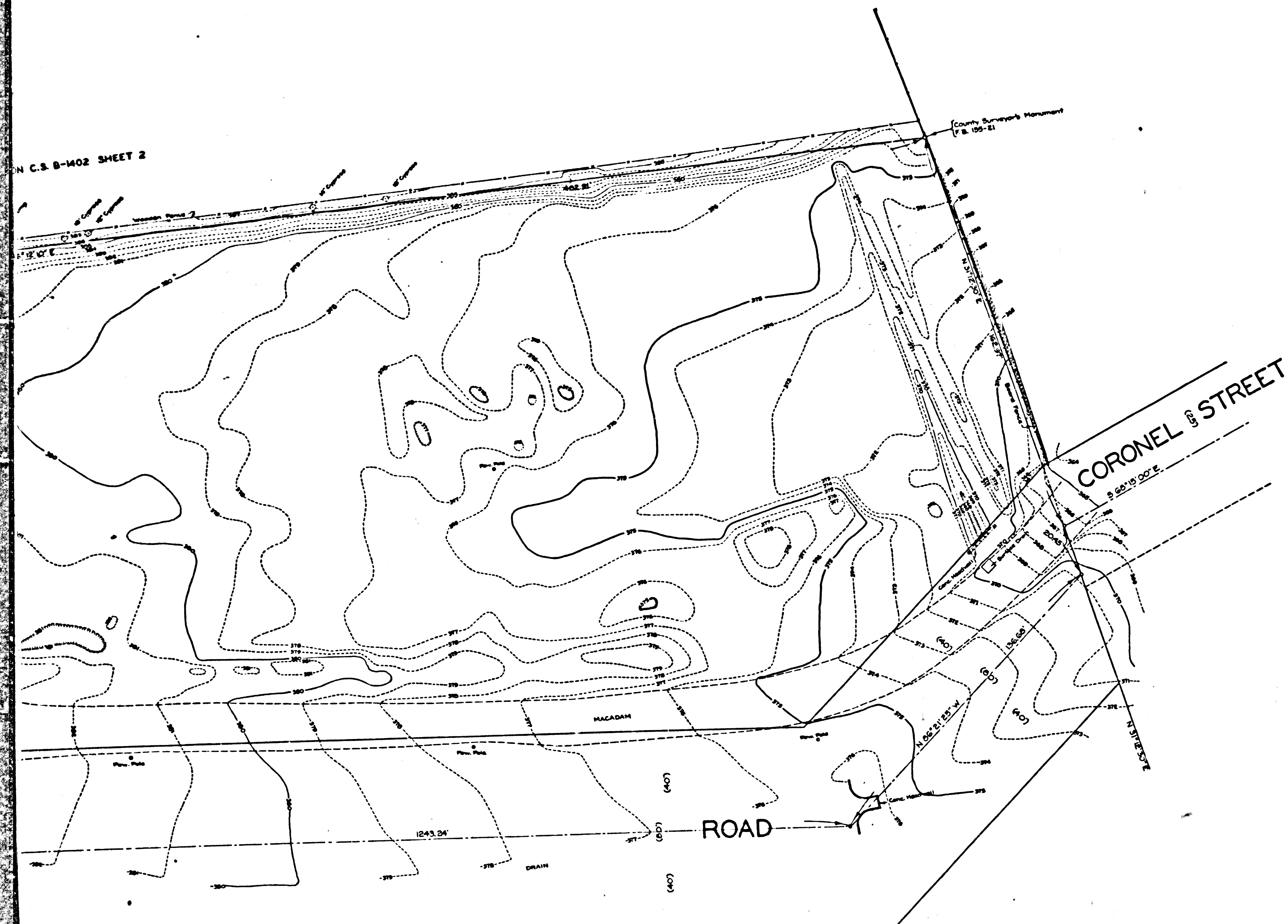


C.S. B-1402 SHEET 2



TOPOGRAPHIC MAP OF  
**NAVAL ARMORY SITE**  
 IN  
**CHAVEZ RAVINE**  
 IN  
**LOS ANGELES COUNTY CALIFORNIA**  
 COUNTY SURVEYORS MAP NO B-1402  
 SHEET NO 3 OF 3 SHEETS

SCALE: 1 INCH = 20 FT.

JOB NUMBER 8214

ALFRED JONES-COUNTY SURVEYOR  
 SURVEYED MARCH-APRIL 1938

SURVEYED UNDER INSTRUCTIONS OF THE  
 BOARD OF SUPERVISORS PER ORDER DATED  
 FEBRUARY 8, 1938

BEARINGS ARE BASED ON THE BEARING OF  
 THE CENTER LINE OF COLLEGE STREET  
 AS SHOWN ON C.S. 7680.

PLANE TABLE SURVEY  
 F. B. 155-1-22

FIELD WORK BY..... H. F. EVANS  
 ..... T. M. WALSH

OFFICE WORK BY..... M. D. DARLING  
 CHECKED BY..... A. A. ROESER

FOR PROPERTY LINE SURVEY SEE C. S. B-1402 SHEET 1

DATUM  
 ELEVATIONS SHOWN HEREON ARE  
 BASED ON THE 1924 U.S.C.G.S.  
 ADJUSTMENT OF U.S.G.S. BM 338 (U.S. 404)

CSB-1402-3  
 A1 OF A2

SHEET NO 3 OF 3 SHEETS  
 COUNTY SURVEYORS MAP NO B-1402

SHEET NO 3 OF 3 SHEETS  
 COUNTY SURVEYORS MAP NO B-1402

