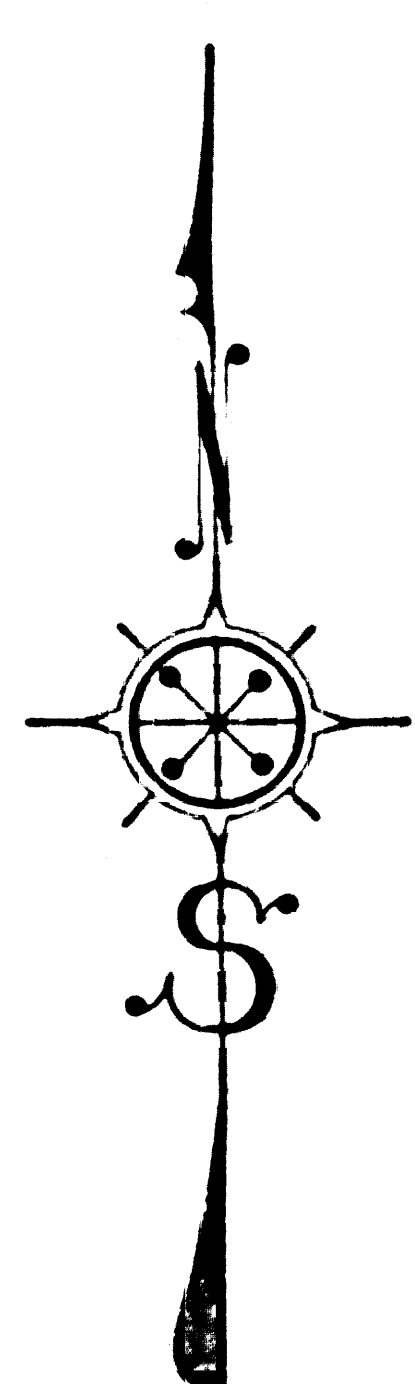


SHEET 3 OF 27 SHEETS
 COUNTY SURVEYORS MAP NO. B-1410



COUNTY OF LOS ANGELES
 TOPOGRAPHIC MAP
 OF
WAYSIDE HONOR RANCHO
 NEAR
CASTAIC, CALIFORNIA

COUNTY SURVEYORS MAP NO. B-1410
 SHEET 3 OF 27 SHEETS
 SCALE: 1 INCH = 50 FT.

JOB NUMBER 8221
 ALFRED JONES - COUNTY SURVEYOR
 SURVEYED MARCH TO AUGUST 1941
 SURVEYED UNDER INSTRUCTIONS OF THE
 BOARD OF SUPERVISORS PER ORDER DATED
 SEPTEMBER 24, 1940.
 BEARINGS ARE BASED ON THE LOS ANGELES
 COUNTY SURVEY CONTROL SYSTEM
 PLANE TABLE SHEETS D-C1, D-C2, D-C3, D-C4
 D-D1, D-D3, D-D4

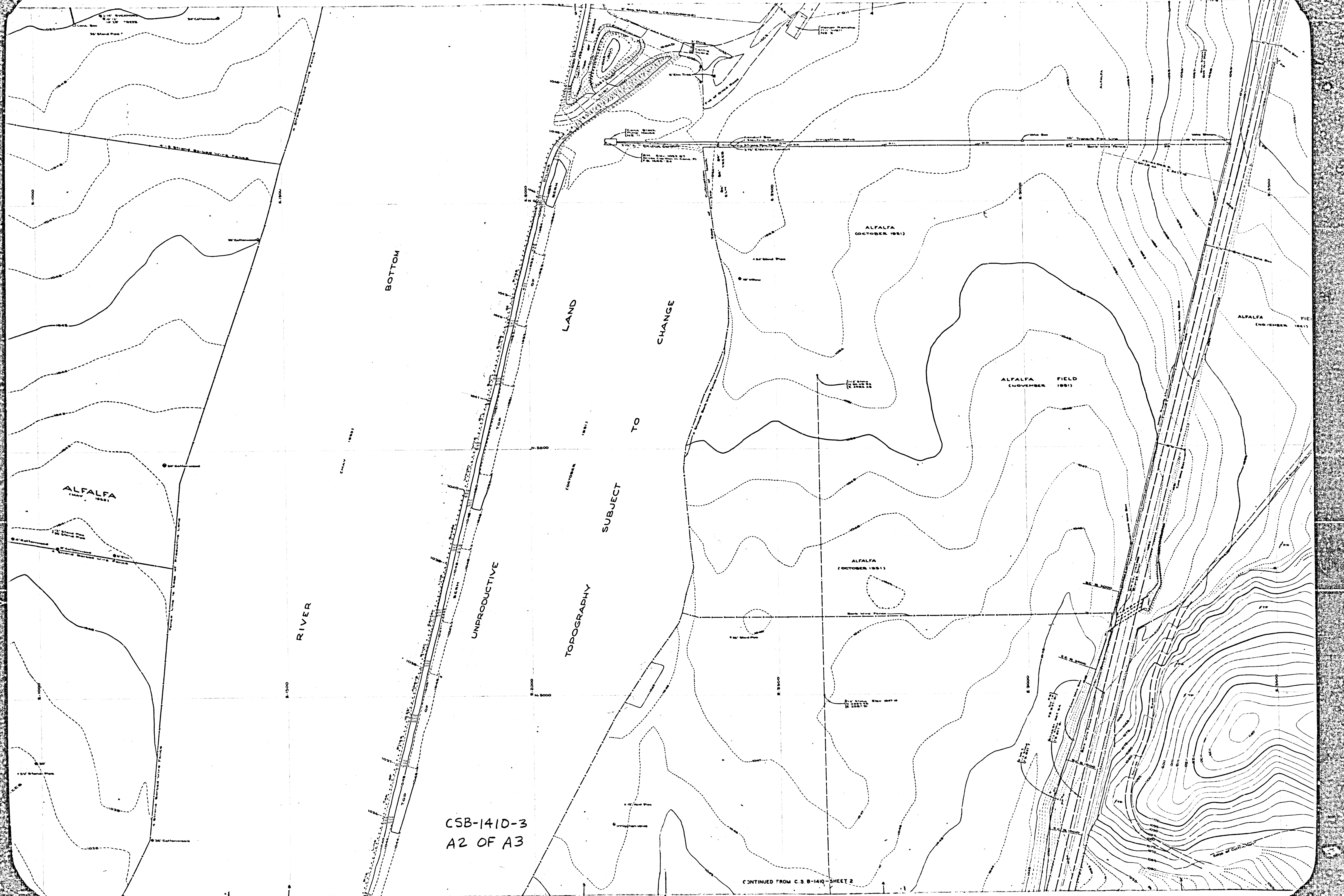
FIELD WORK BY F. GREENWOOD
 F. C. HOWARD
 OFFICE WORK BY C. J. TERRY
 CHECKED BY L. K. FREEMAN
 J. H. SMITH

DATUM - MEAN SEA LEVEL
 ELEVATIONS SHOWN HEREON ARE
 BASED ON THE 1922 ADJUSTMENT
 OF U.S.C. & G.S. B.M. 52-1826 (U.S. 1502)

NOTE: The Survey Control System referred to is the County Polyconic
 Plane Coordinate System for Grid Surveys until January 1941. Bearings
 are not based on the Los Angeles County Coordinate System, Lambert Grid

CSB-1410-3
 A1 OF A3

SHEET 3 OF 27 SHEETS
 COUNTY SURVEYORS MAP NO. B-1410



BOTTOM

LAND

CHANGE

SUBJECT TO

TOPOGRAPHY

UNPRODUCTIVE

RIVER

ALFALFA

ALFALFA (OCTOBER 1951)

ALFALFA (NOVEMBER 1951) FIELD

ALFALFA (NOVEMBER 1951)

ALFALFA (OCTOBER 1951)

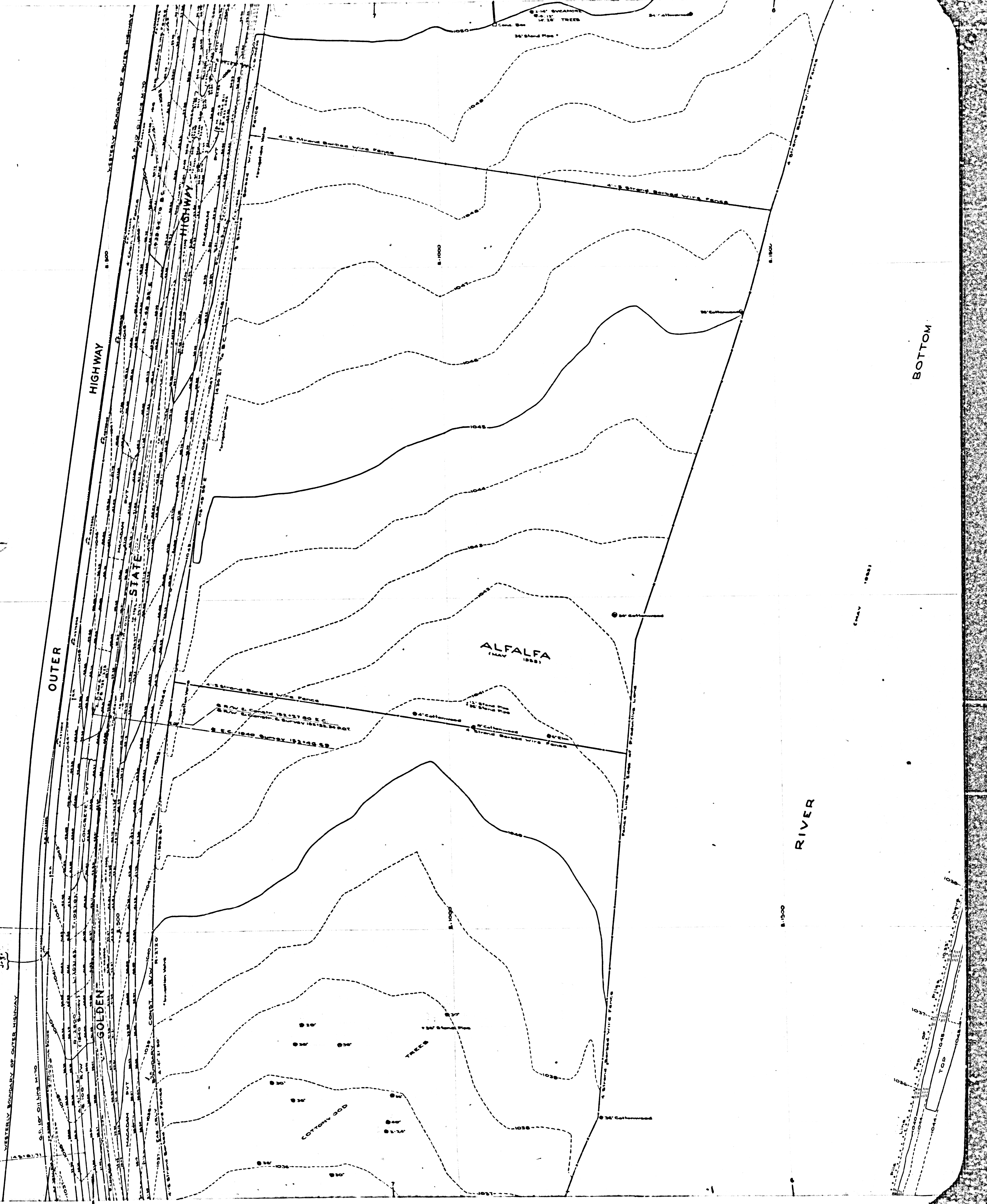
CSB-1410-3
A2 OF A3

CONTINUED FROM C.S. B-1410-SHEET 2

014-B-B-AM DAM PROYECTUS YIMUOC
SHEET 3 OF 5 SHEETS

SHEET 3 OF 5 SHEETS
CONTRACT NUMBER 2140-3

CSB-1410-3
A3 OF A3



BOTTOM