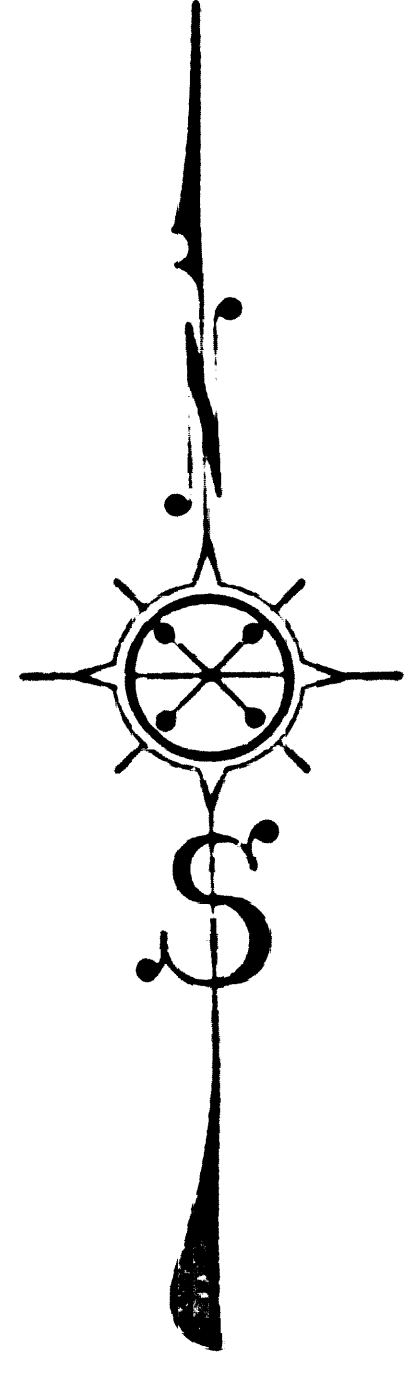


CONTINUED ON C. S. B-1642 SHEET 14.



COUNTY OF LOS ANGELES  
 TOPOGRAPHIC MAP  
 OF  
**WAYSIDE HONOR RANCHO**  
 NEAR  
**CASTAIC, CALIFORNIA**

COUNTY SURVEYORS MAP NO B-1410  
 SHEET 5 OF 27 SHEETS  
 SCALE: 1 INCH = 50 FT.

JOB NUMBER 8221  
 ALFRED JONES - COUNTY SURVEYOR  
 SURVEYED FEBRUARY 1941  
 SURVEYED UNDER INSTRUCTIONS OF THE  
 BOARD OF SUPERVISORS PER ORDER DATED  
 SEPTEMBER 24, 1940.  
 BEARINGS ARE BASED ON THE LOS ANGELES  
 COUNTY SURVEY CONTROL SYSTEM  
 PLANE TABLE SHEETS D-E1 D-E3, D-E4

FIELD WORK BY F. GREENWOOD  
 P. C. HOWARD  
 OFFICE WORK BY C. J. TERRY  
 CHECKED BY L. K. FREEMAN  
 J. H. SMITH

DATUM - MEAN SEA LEVEL  
 ELEVATIONS SHOWN HEREON ARE  
 BASED ON THE 1932 ADJUSTMENT  
 OF U.S.C. & G.S. B.M. 0-52-1936 (U.S. 1502)

NOTE: The Survey Control System referred to is the County Polyconic  
 Plane Coordinate System for Area 5, in use until January 1943. Bearings  
 are not based on the Los Angeles County Coordinate System, Lambert Grid

Revised 5-12-55 Plan. BY LUT DE AL. BY A.L.M.

CSB-1410-5  
 A1 OF A3

SHEET 5 OF 27 SHEETS  
 COUNTY SURVEYORS MAP NO B-1410

SHEET 5 OF 27 SHEETS  
 COUNTY SURVEYORS MAP NO B-1410

CHANGEABLE TOPOGRAPHIC  
(MAY 1951)  
UNPRODUCTIVE LAND IN OLD RIVER BOTTOM

CONTINUED ON C.S.B-1410-SHEET 6

CHANGEABLE TOPOGRAPHIC  
(FEBRUARY 1951)  
UNPRODUCTIVE LAND IN OLD RIVER BOTTOM

TOWNSHIP LINE T5N R17W  
T4N R17W

N 89° 33' 30" E  
453.33

8000 RANDOM LINE

LEGEND  
A. Contour Lines  
B. Section Lines  
C. Township Lines  
D. Range Lines  
E. Section Corners  
F. Section Numbers

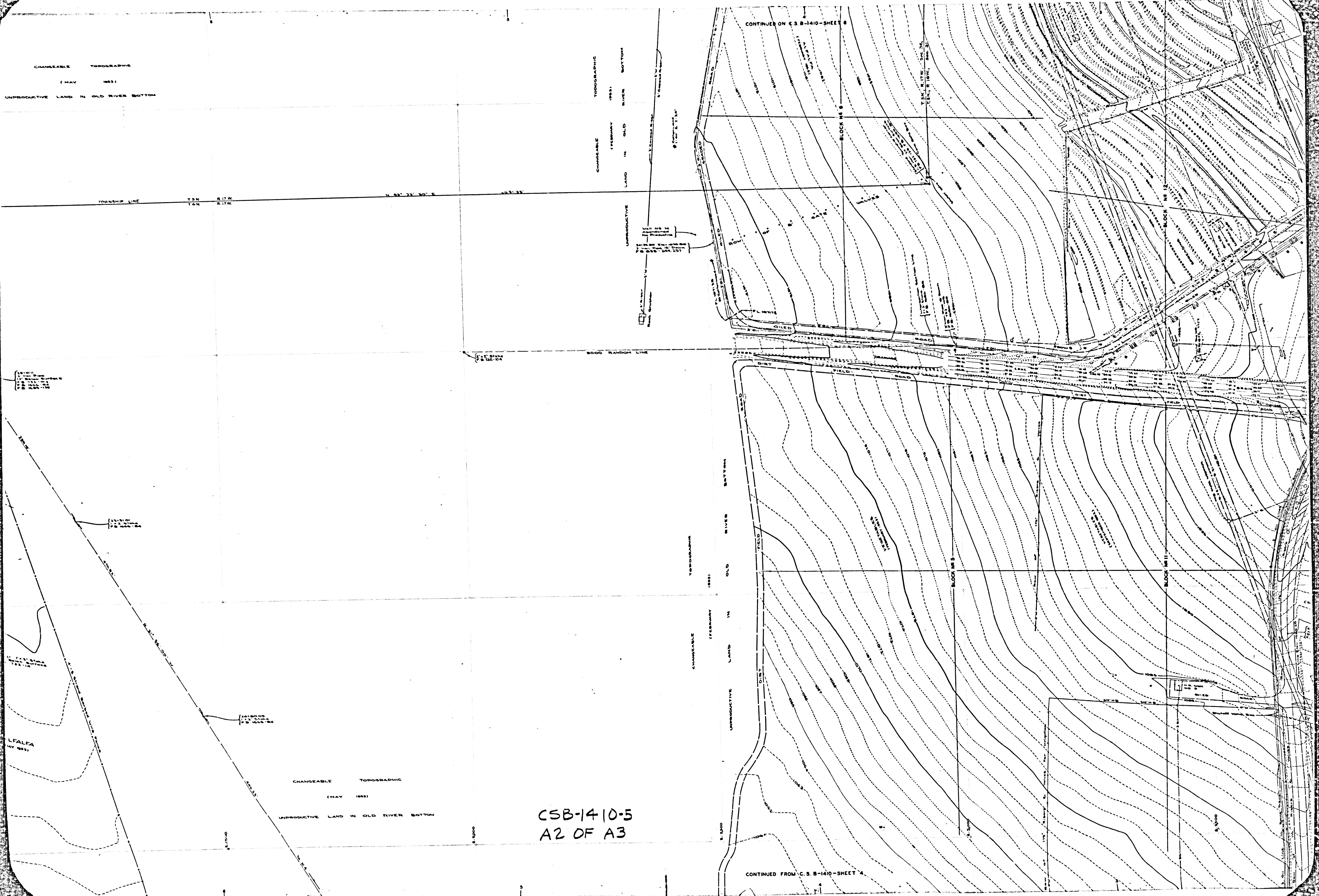
LAND REVISION

LFALCA  
MAY 1951

CHANGEABLE TOPOGRAPHIC  
(MAY 1951)  
UNPRODUCTIVE LAND IN OLD RIVER BOTTOM

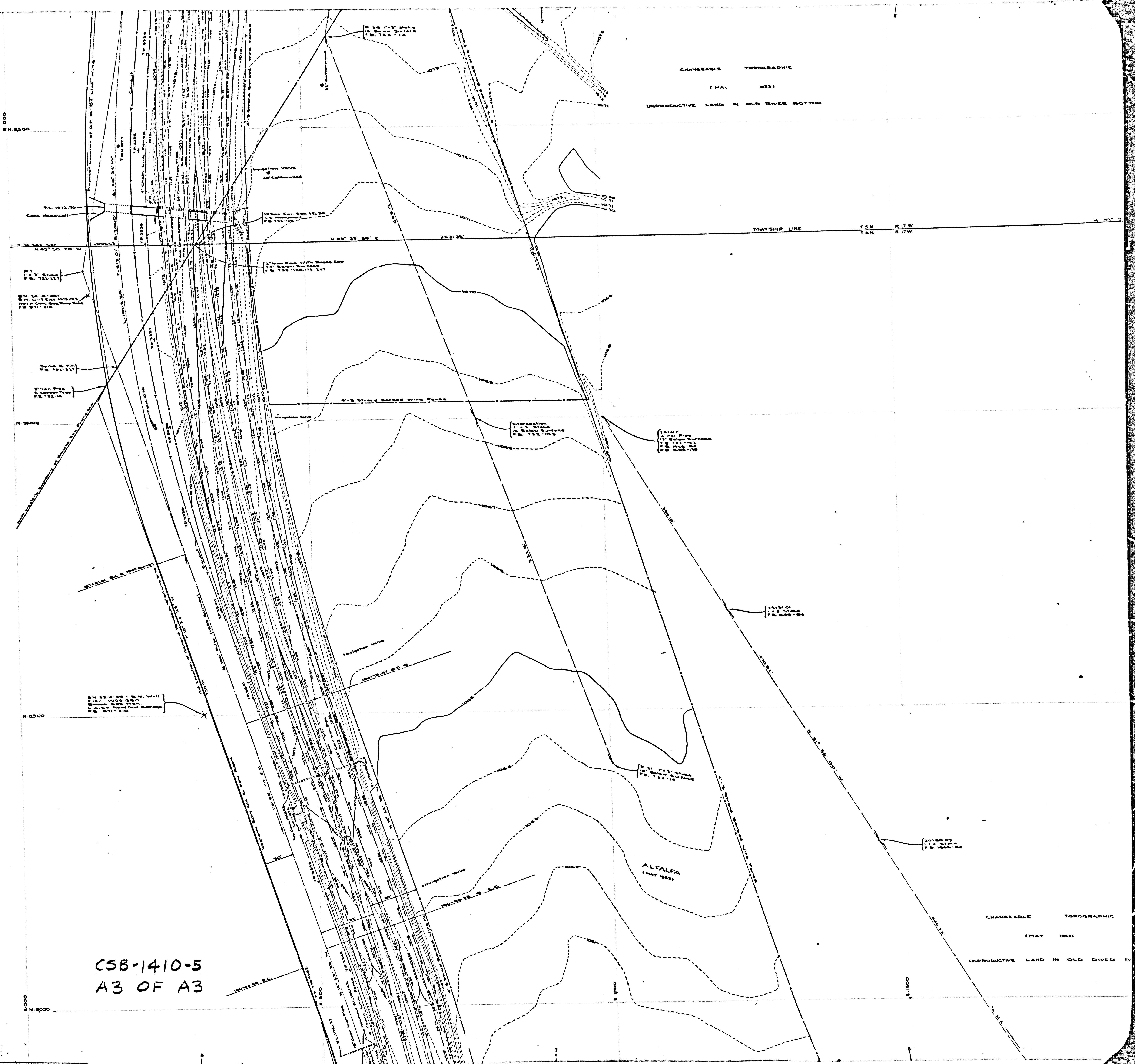
CSB-1410-5  
A2 OF A3

CONTINUED FROM C.S.B-1410-SHEET 4



SHEET 2 OF 51 SHEETS  
 COMILA SUBLEASORS MAP No B-1410

SHEET 2 OF 51 SHEETS  
 COMILA SUBLEASORS MAP No B-1410



CSB-1410-5  
 A3 OF A3

CHANGEABLE TOPOGRAPHIC  
 (MAY 1953)  
 UNPRODUCTIVE LAND IN OLD RIVER BOTTOM

CHANGEABLE TOPOGRAPHIC  
 (MAY 1953)  
 UNPRODUCTIVE LAND IN OLD RIVER BOTTOM