

**LOMITA PARK**  
 NORTH 1/2 LOT 64, TRACT N<sup>o</sup> 15, M.B. 12-189.  
 O.R.D. 4437-483 (20)  
 E. 25-125.0 R. 13870-78  
 5.903 Acres

MAP OF  
**LOMITA PARK**  
 BEING  
 NORTH 1/2 OF LOT 64, TRACT N<sup>o</sup> 15,  
 M.B. 12-189.

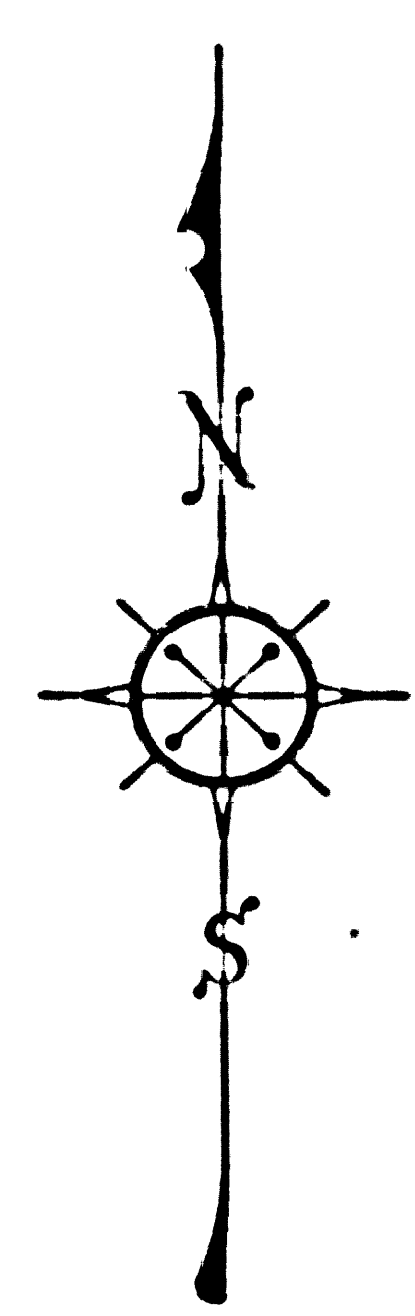
COUNTY SURVEYORS MAP N<sup>o</sup> B-1416.  
 SCALE: 1 INCH = 50 FT.

JOB NUMBER 8219.  
 ALFRED JONES-COUNTY SURVEYOR  
 SURVEYED - APRIL, 1938  
 BEARINGS ARE BASED ON THE BEARING  
 OF LOMITA BOULEVARD PER C.S. 8777.

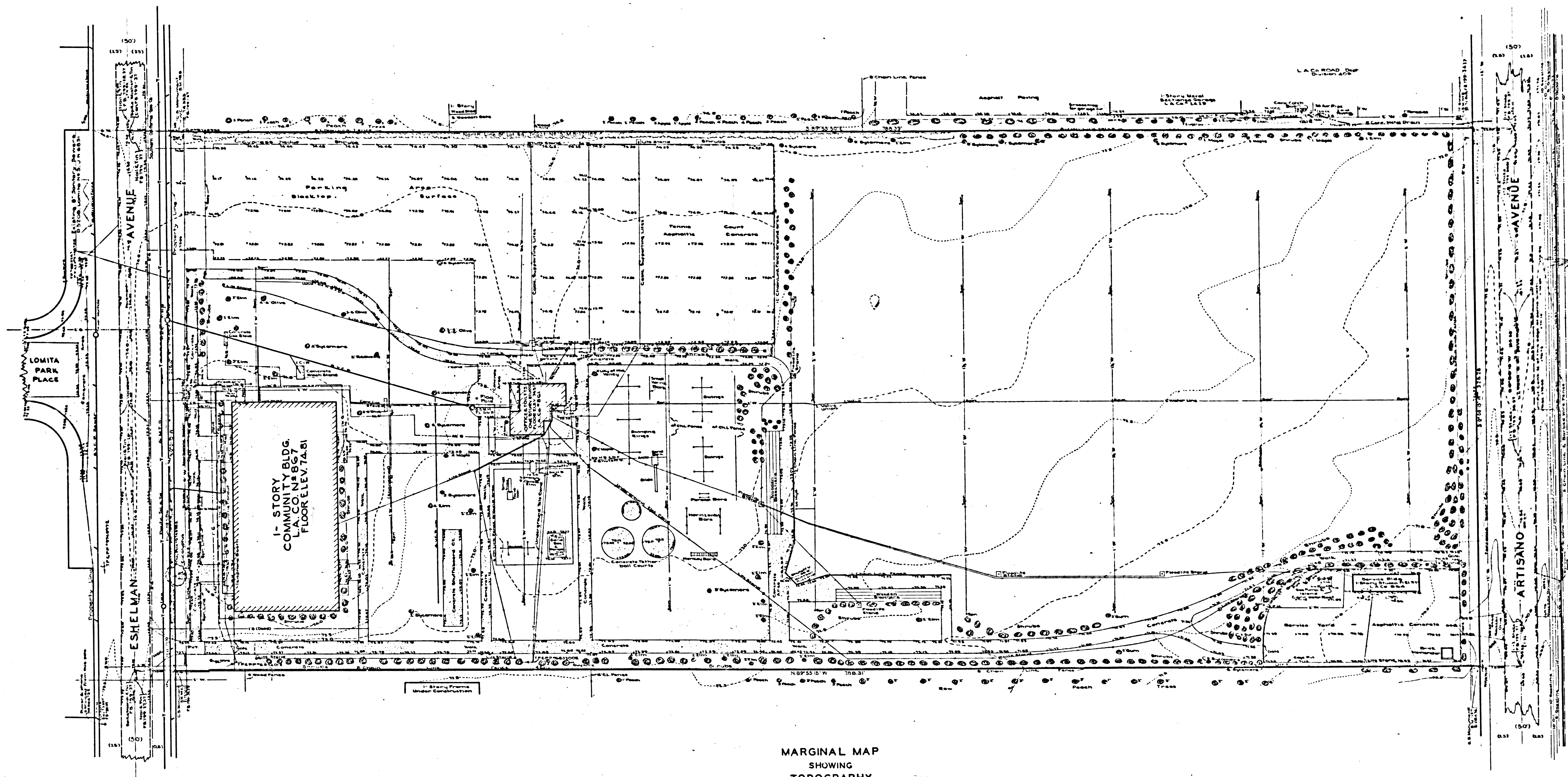
INDEX 28

F.B. 799-25-38.  
 FIELD WORK BY.....L.D. MOORE  
 T. WALSH  
 OFFICE WORK BY.....DA. WHITE  
 CHECKED BY.....ANDREW

Acreage added 10-27-53 C.L.D.  
 Name Established by Board Order - Min. Ch. 40-128  
 See E. 143-29



CSB-1416  
 A1 OF A2



CSB-1416  
A2 OF A2

MARGINAL MAP  
SHOWING  
TOPOGRAPHY  
SCALE: 1 INCH = 20 FT.

DATUM: U.S.C.S.  
ELEVATIONS SHOWN HEREON ARE BASED ON THE  
1934 ADJUSTMENT OF THE U.S.C.S. BENCH  
MARK 599 - 1932 (U.S. 2701).

Water Lines added Dec., 1936 - per P.B. 104-10-13  
Field work by L. D. Moore  
Office work by M. D. Darling  
Checked by J. H. Smith  
C. L. Pease  
Revised 9-1-38 under J.S. 1-27  
By T.M.P. from Fieldnote V

Union Oil Co.