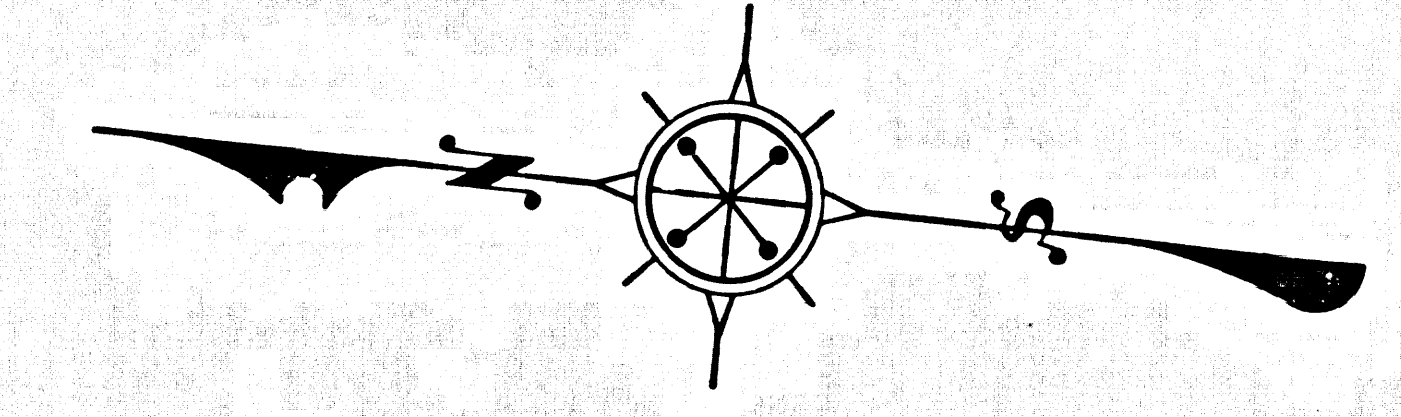
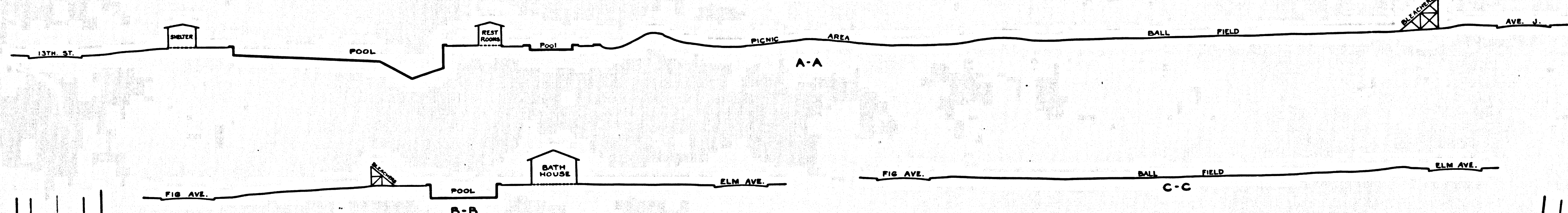


TYPICAL SECTIONS
 SCALES - Horizontal 1 in. = 40 Ft.
 Vertical 1 in. = 20 Ft.



GRADING PLAN
 FOR
JANE REYNOLDS PARK
LANCASTER

COUNTY SURVEYORS MAP NO B-1477.
 SCALE: 1 INCH = 40 FEET.
 JOB NUMBER 5217
 ALFRED JONES - COUNTY SURVEYOR
 SURVEYED MARCH 1939 -

SURVEYED UNDER INSTRUCTIONS OF THE BOARD
 OF SUPERVISORS PER ORDER DATED DEC. 21 1937
 BEARINGS ARE BASED ON THE BEARING OF
 AVENUE "J" (DEL-SUR ROAD) PER C.S. 8200.
 CONTOUR INTERVALS AS SHOWN
 FIELD WORK BY E.A. ROSECRANS.
 OFFICE WORK BY J. H. SMITH.
 H.L. MARTIN.
 C.L. KEAGLE.
 CHECKED BY J. H. SMITH.

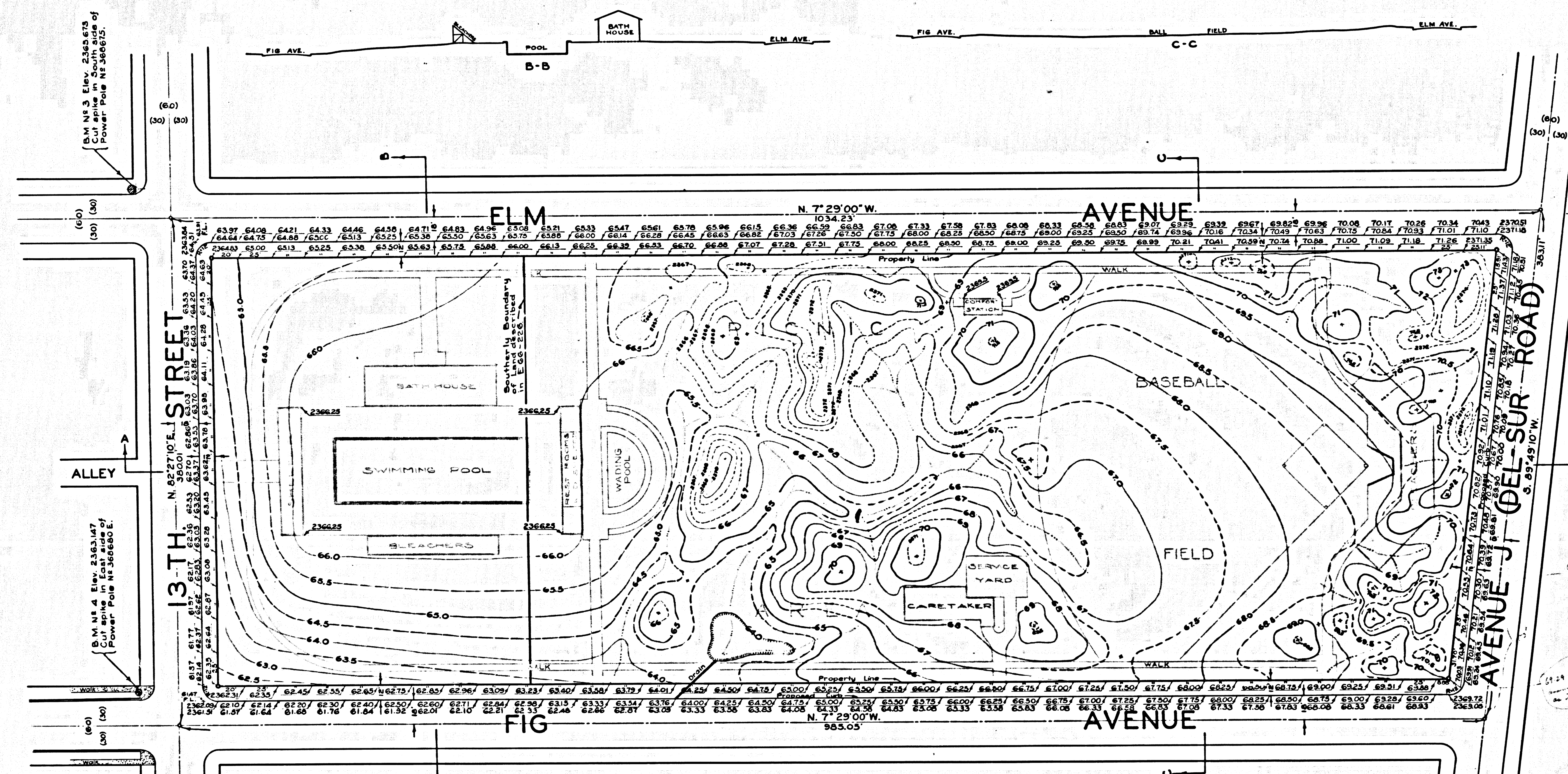
1 N 331-237

DATUM
 ELEVATIONS SHOWN HEREON ARE
 BASED ON THE 1928 ADJUSTMENT
 OF U.S.C.G.S. BM A-371928 (U.S. 2137)

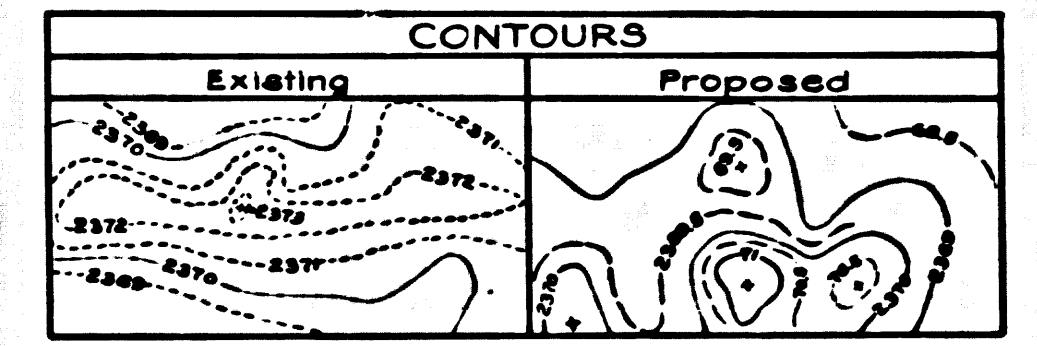
FOR SURVEY AND ORIGINAL TOPOGRAPHY SEE C.S. B-1381, SHT. 1
 FOR LATER TOPOGRAPHY SEE C.S. B-1381, SHT. 2
 FOR UTILITIES SEE C.S. B-1467

NOTE: THIS GRADING PLAN WAS PREPARED TO CONFORM
 TO A PRELIMINARY DESIGN PLAN OF DATE NOV. 19. 1937
 FURNISHED BY THE REGIONAL PLANNING COMMISSION.

CSB 1477



Note: Grades of walks are to conform
 with naturalness of appearance to the
 existing or grade contours as far as
 it is practicable to do so.



Note: From the south end of the swimming pool
 area to Avenue "J" all ground (excepting the
 ball field) is to be graded to conform to
 the characteristic natural topography.