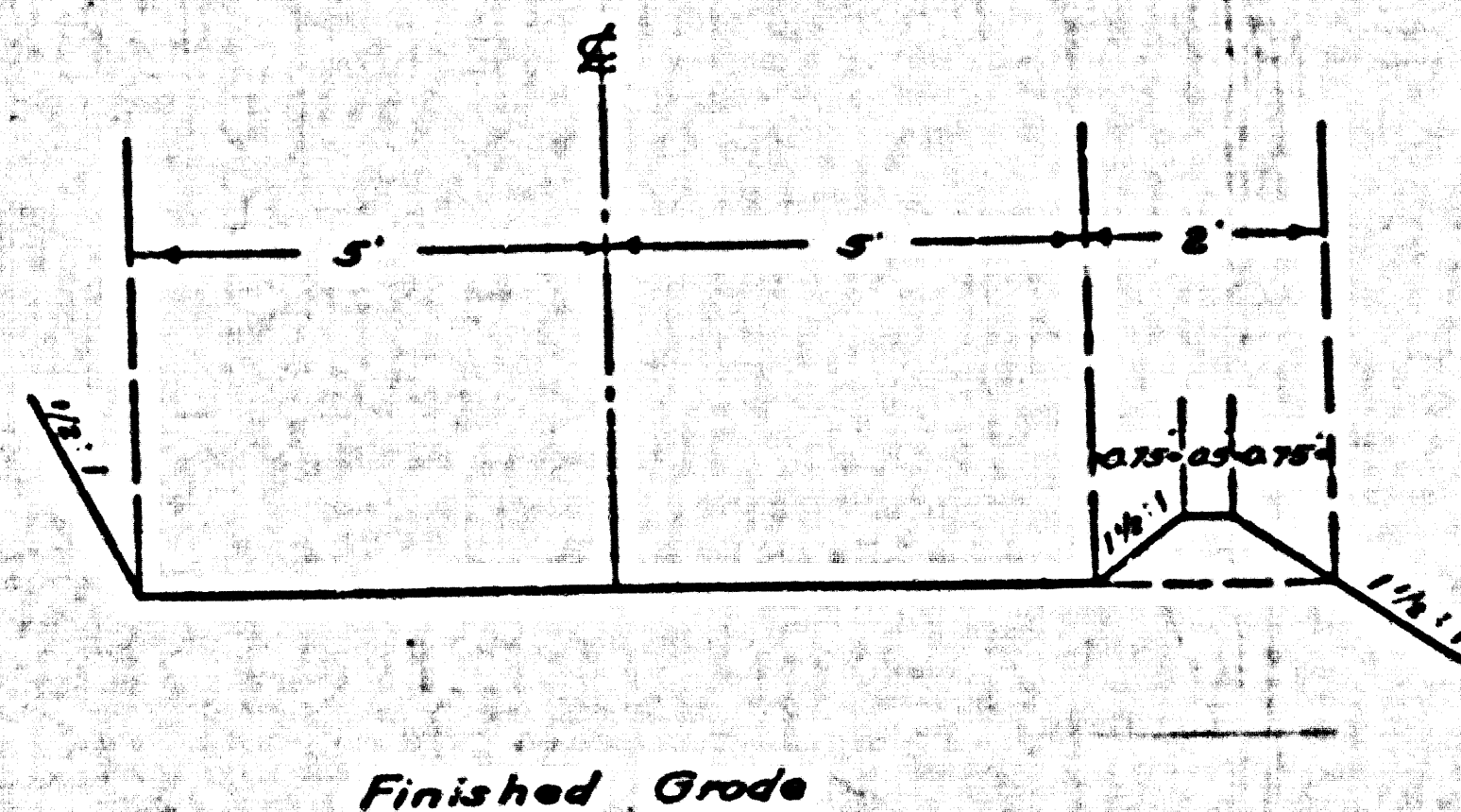


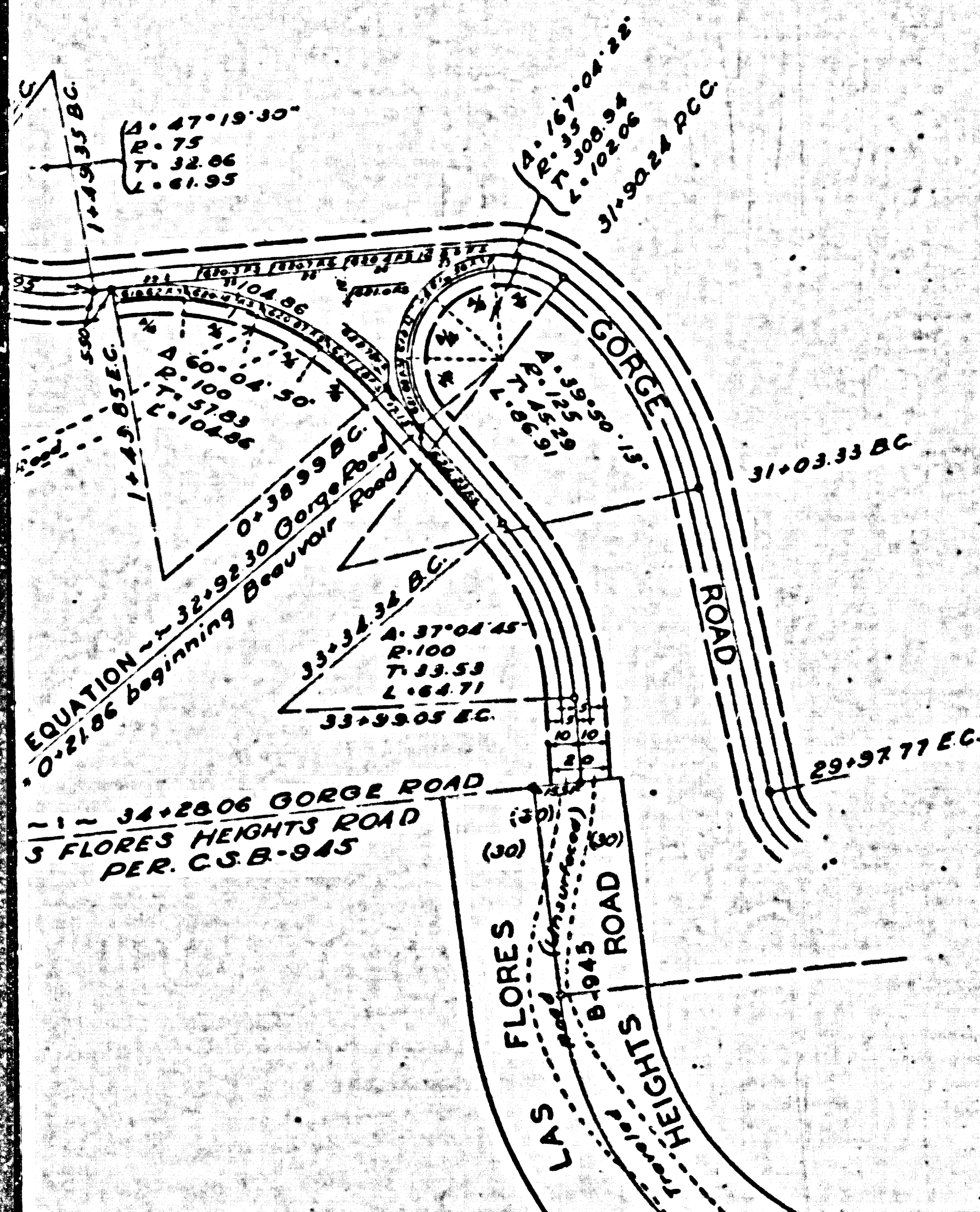
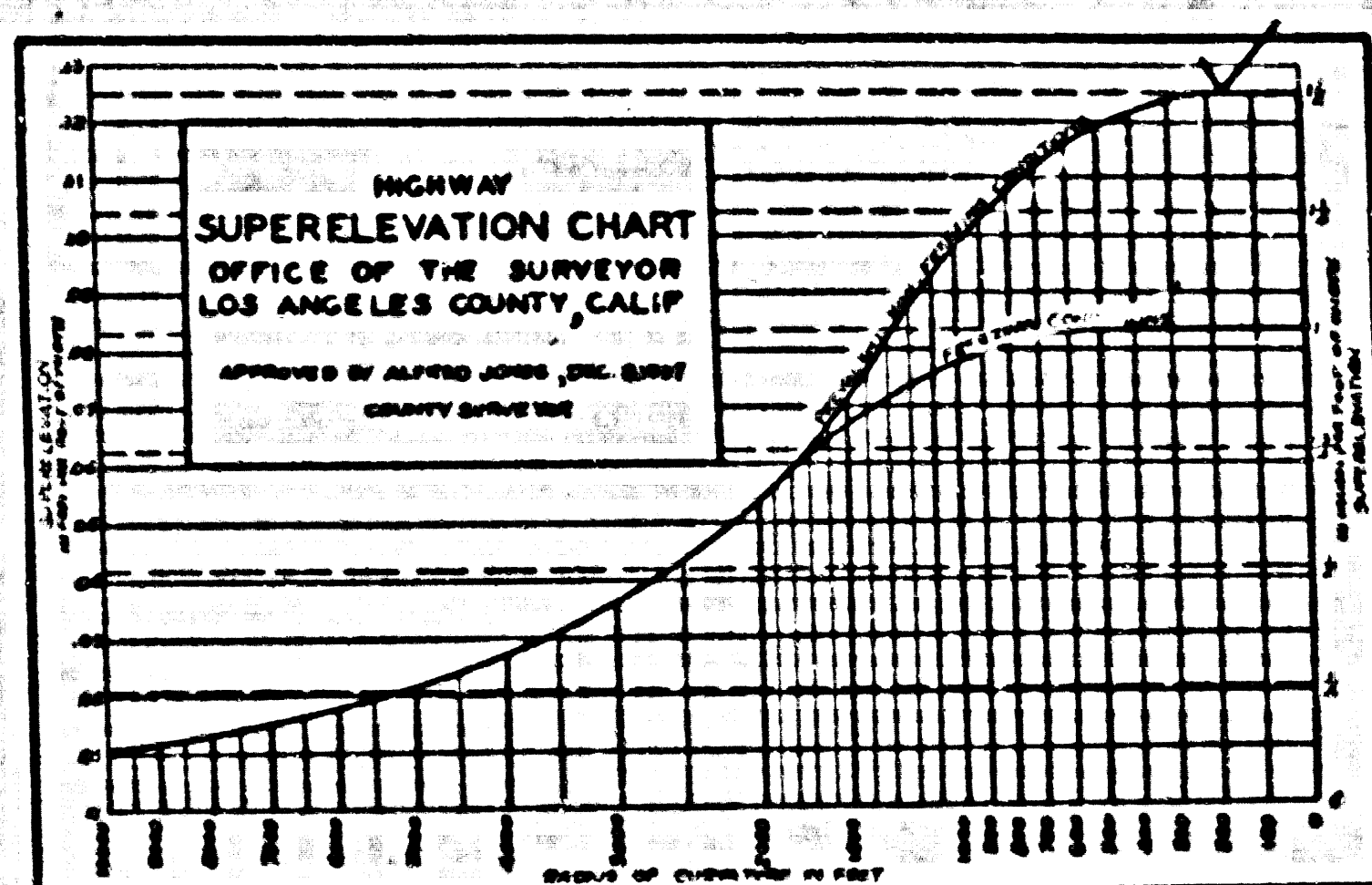
TYPICAL CROSS SECTION

Not to Scale



Finished Grade

On Curves - County Surveyor's Standard Superelevation to be used (See Chart Below)



PLAN AND PROFILE OF  
BEAUVOIR ROAD  
FROM  
GORGE ROAD

TO  
660 FEET NORTH OF THE SOUTH LINE  
OF SECTION 23, T.15, R.17 W, S.B.M

COUNTY SURVEYORS MAP N°B-1647  
SCALES - AS SHOWN

JOB NUMBER 8290

ALFRED JONES - COUNTY SURVEYOR  
SURVEYED OCTOBER 1940 - MARCH 1941

SURVEYED UNDER INSTRUCTIONS OF THE  
BOARD OF SUPERVISORS PER ORDER DATED  
JANUARY 9, 1940

F. B. 660-219-292

FIELD WORK BY... L. S. HAMMOND

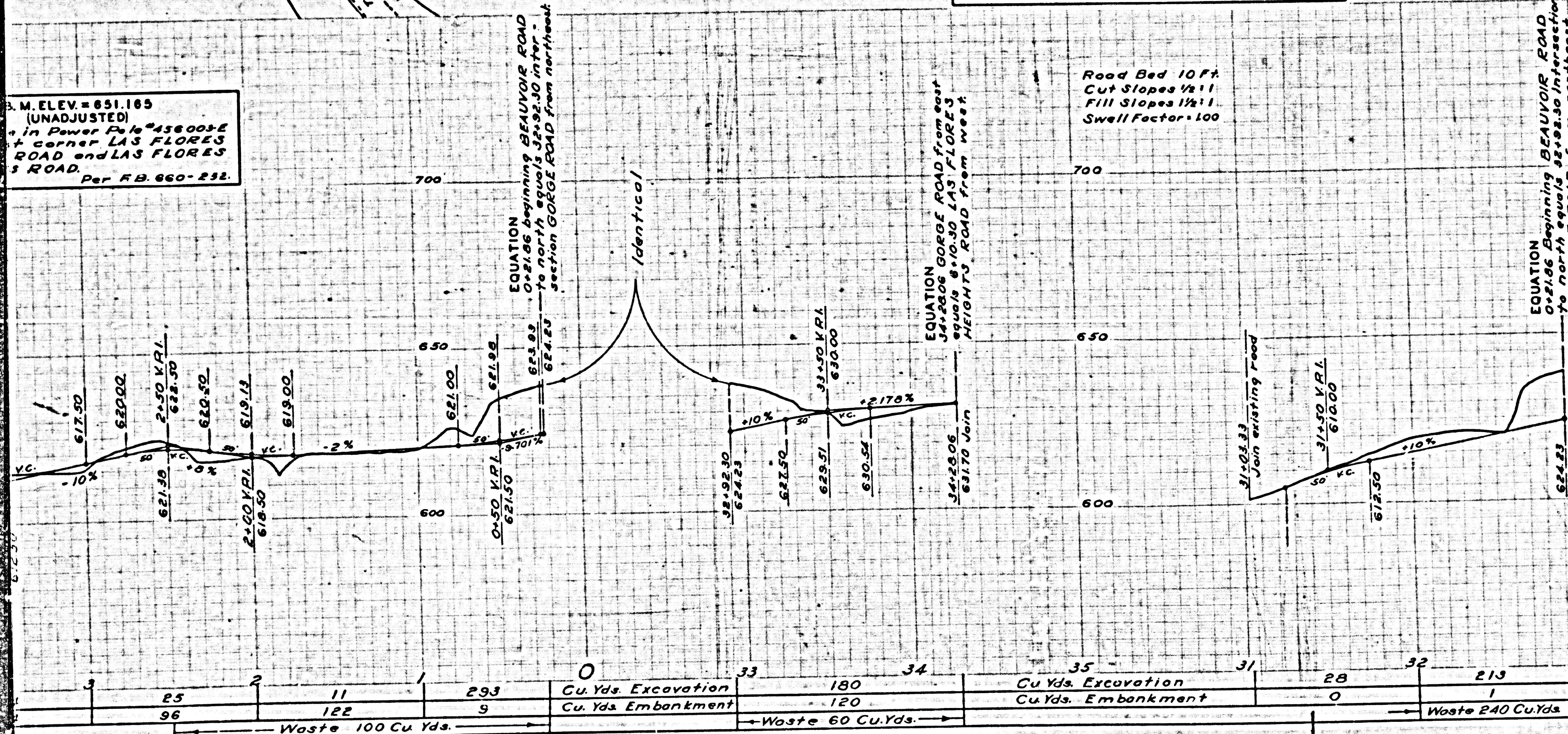
OFFICE WORK BY... H. F. NAUMANN

CHECKED BY... L. K. FREEMAN

..... J. H. SMITH

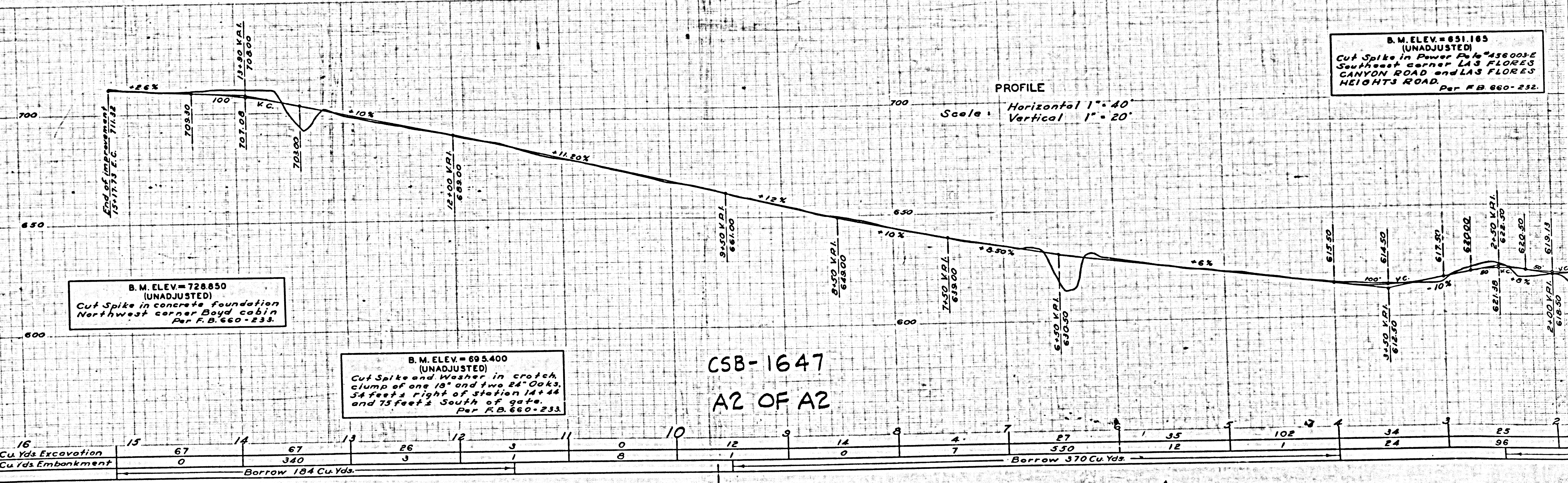
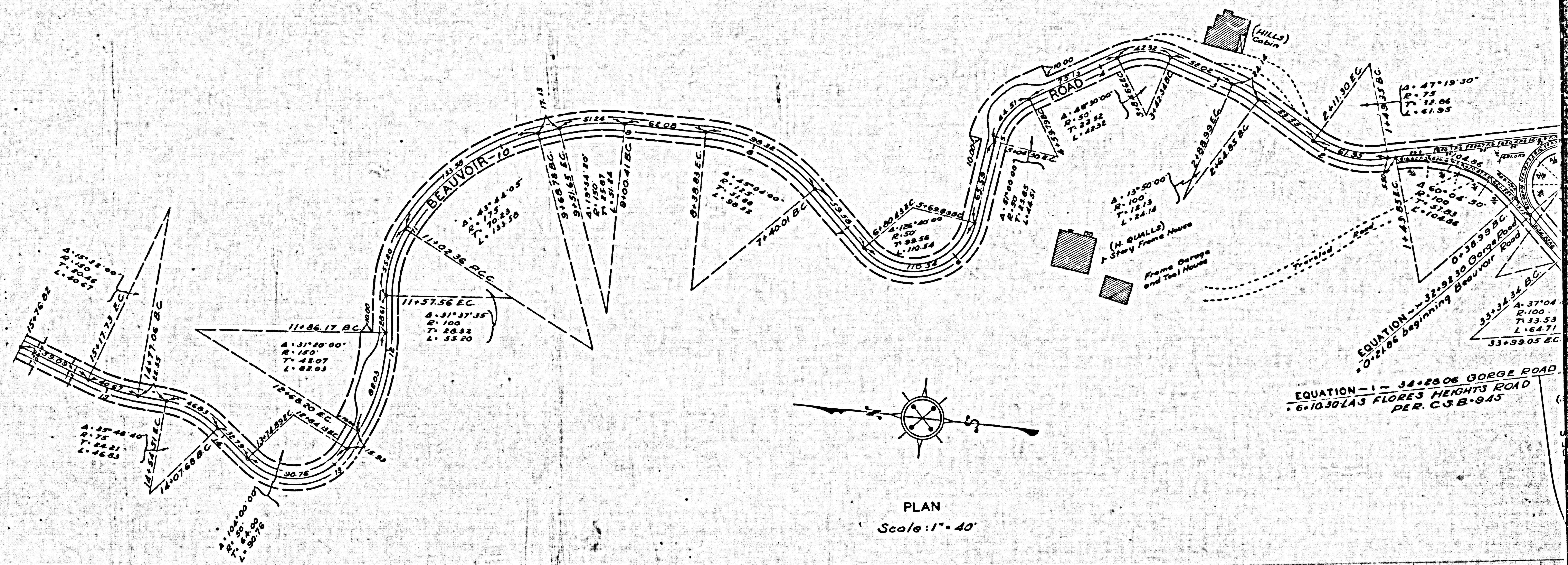
FOR ALIGNMENT SEE C. S. B-1627

DATUM - MEAN SEA LEVEL  
ELEVATIONS SHOWN HEREON ARE BASED ON THE 1928  
U. S. C. & G. S. ADJUSTMENT OF U. S. G. S. B.M. (U. S. 1296)



M. ELEV. = 651.165  
(UNADJUSTED)  
in Power Pole #456003E  
at corner LAS FLORES  
ROAD and LAS FLORES  
ROAD. Per F.B. 660-232.

CSB-1647  
A1 OF A2



CSB-1647  
 A2 OF A2