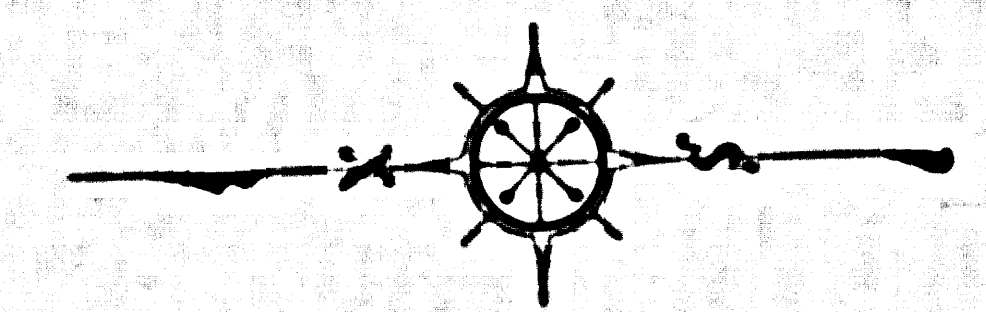
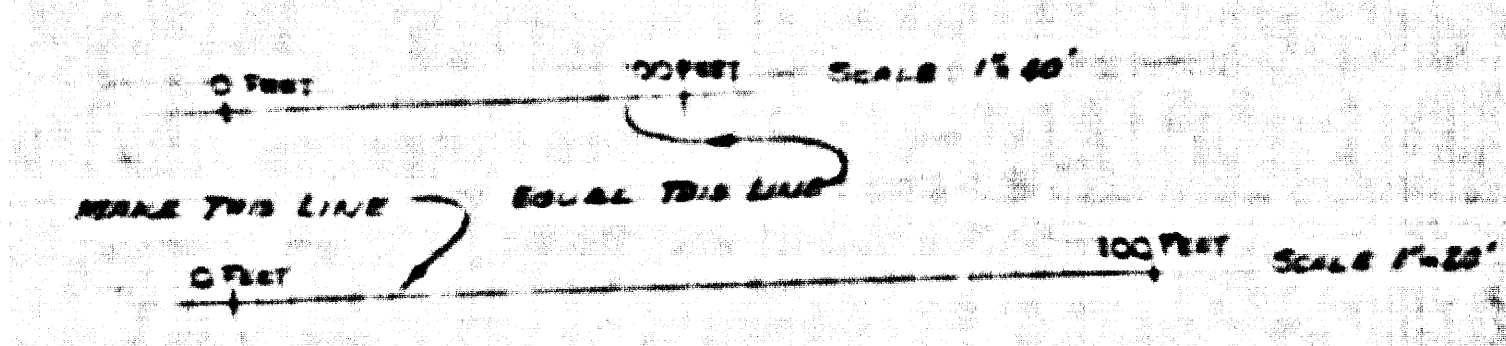
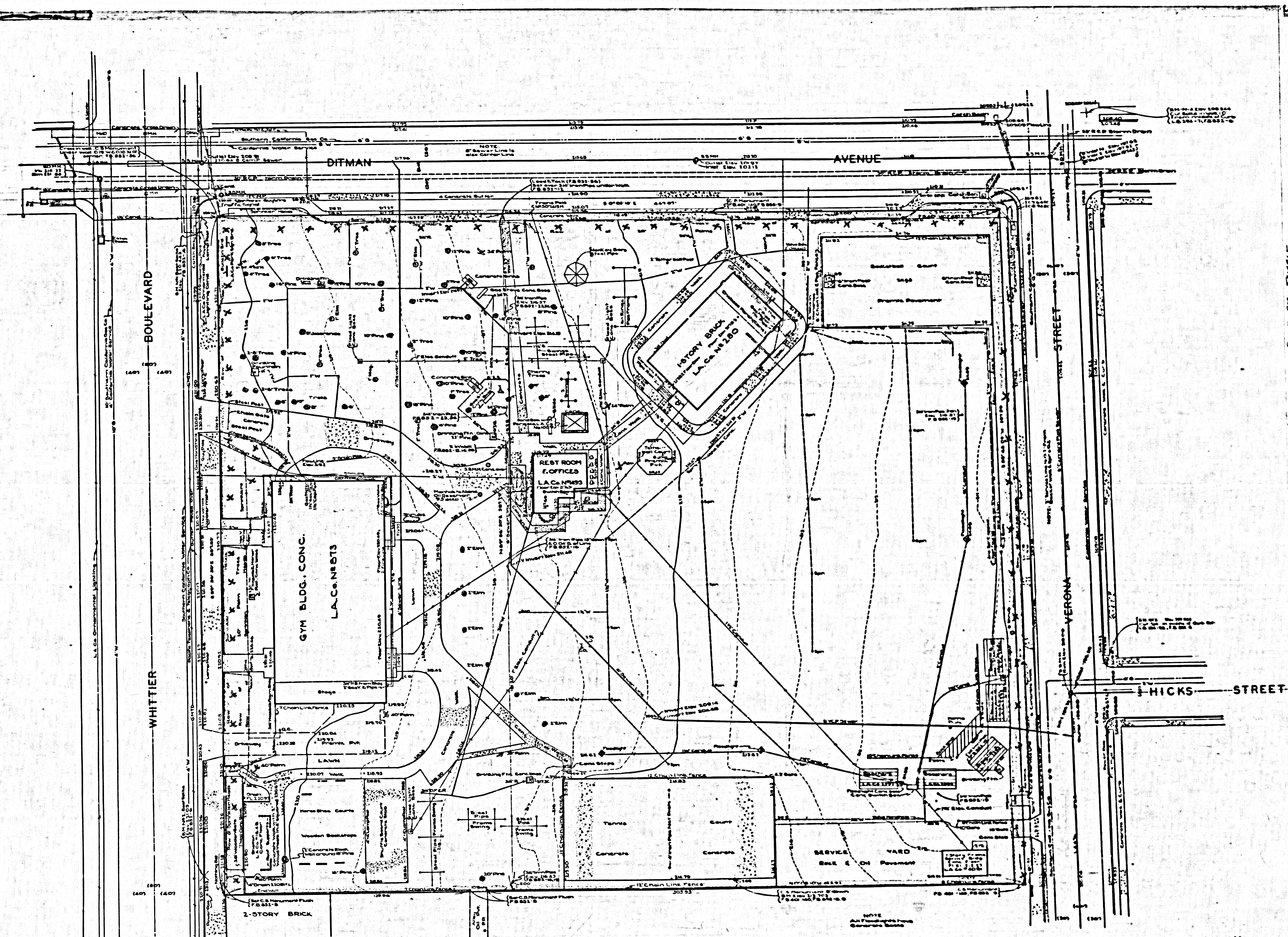


COMPL. SURVEYOR'S MAP NO. B-5138

COMPL. SURVEYOR'S MAP NO. B-5138

COMPL. SURVEYOR'S MAP NO. B-5138

COMPL. SURVEYOR'S MAP NO. B-5138



COUNTY OF LOS ANGELES  
 TOPOGRAPHIC MAP OF  
**LAGUNA PARK**  
 &  
**PLAYGROUND**  
 COUNTY SURVEYORS MAP NO. B-2138  
 SHEET NO. 1 OF 1 SHEETS  
 SCALE = 1 INCH = 20 FT.

JOB NUMBER 0054.42  
 WILLIAM J. FOX-COUNTY SURVEYOR  
 SURVEYED OCTOBER 1953  
 SURVEYED ON REQUEST OF THE  
 SUPERINTENDENT OF PARKS & RECREATION  
 UNDER SEC. 79, ORD. 4099, BY LETTER  
 DATED JULY 2, 1953  
 BEARINGS ARE BASED ON THE CALIFORNIA  
 COORDINATE SYSTEM ZONE 7, PER ACT 8351  
 GENERAL LAWS. SEE C.S. 9423  
 FB 401, 852.375  
 L.B. 264, P.T. 2MT. 0-27, LB. 468  
 FIELD WORK BY...W.E. BRADEN  
 OFFICE WORK BY...T.M. PALMER  
 CHECKED BY...T. ITO

DATUM - MEAN SEA LEVEL  
 ELEVATIONS SHOWN HEREON ARE BASED UPON  
 U.S.G.S. BULLETIN 785, ELEVATION OF U.S.G.S. B.M.  
 AT WHITTIER BLVD. AND EASTERN AVENUE (U.S. 649)  
 FOR CALCULATIONS & GENERAL GRADING PLAN SEE CSB-1744  
 FOR BOUNDARY & OLD TOPOGRAPHY SEE CSB-1625  
 FOR NEW BOUNDARY OF PARK SEE C.S. B-2701  
 Names transferred to Laguna Park on S. 195-297, Jan. 28, 1958 176  
 Topography Revised by W.A.B. per P.T. 5MT. 0-271 N-21-51

CSB-2138  
 A1 OF A1