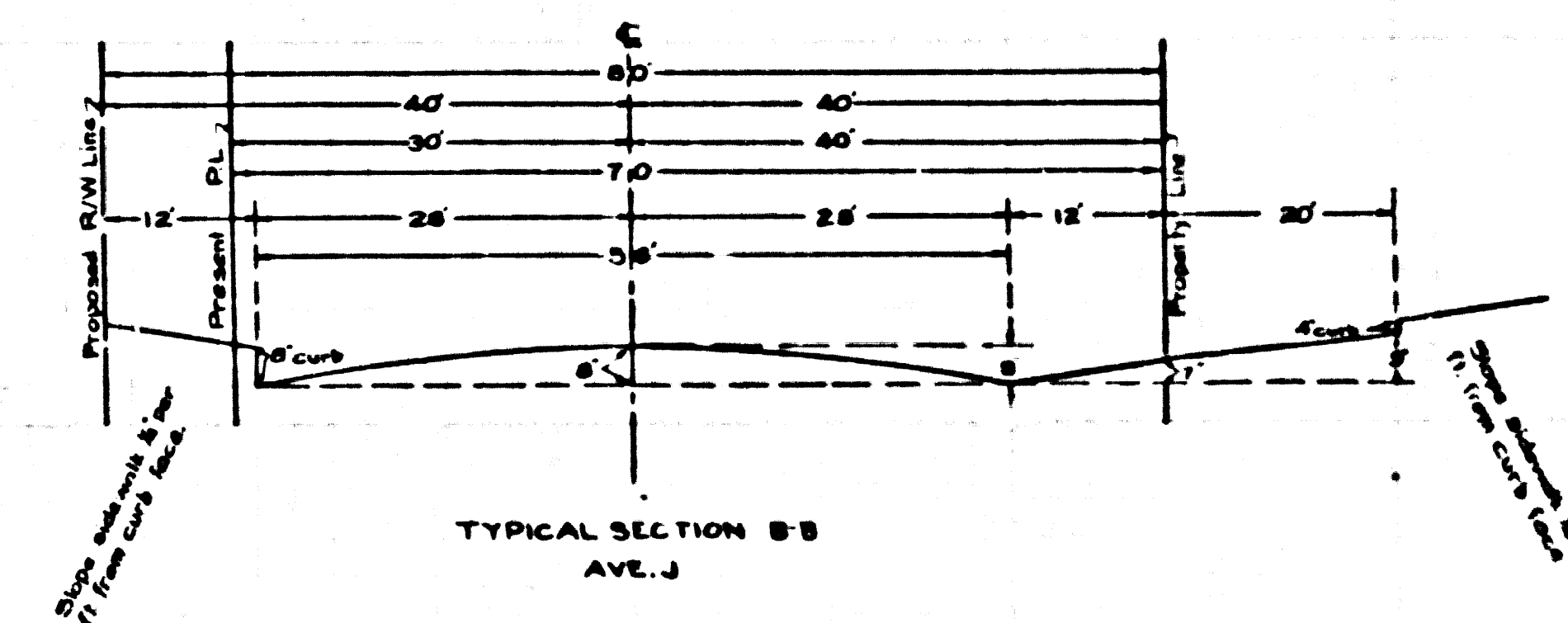
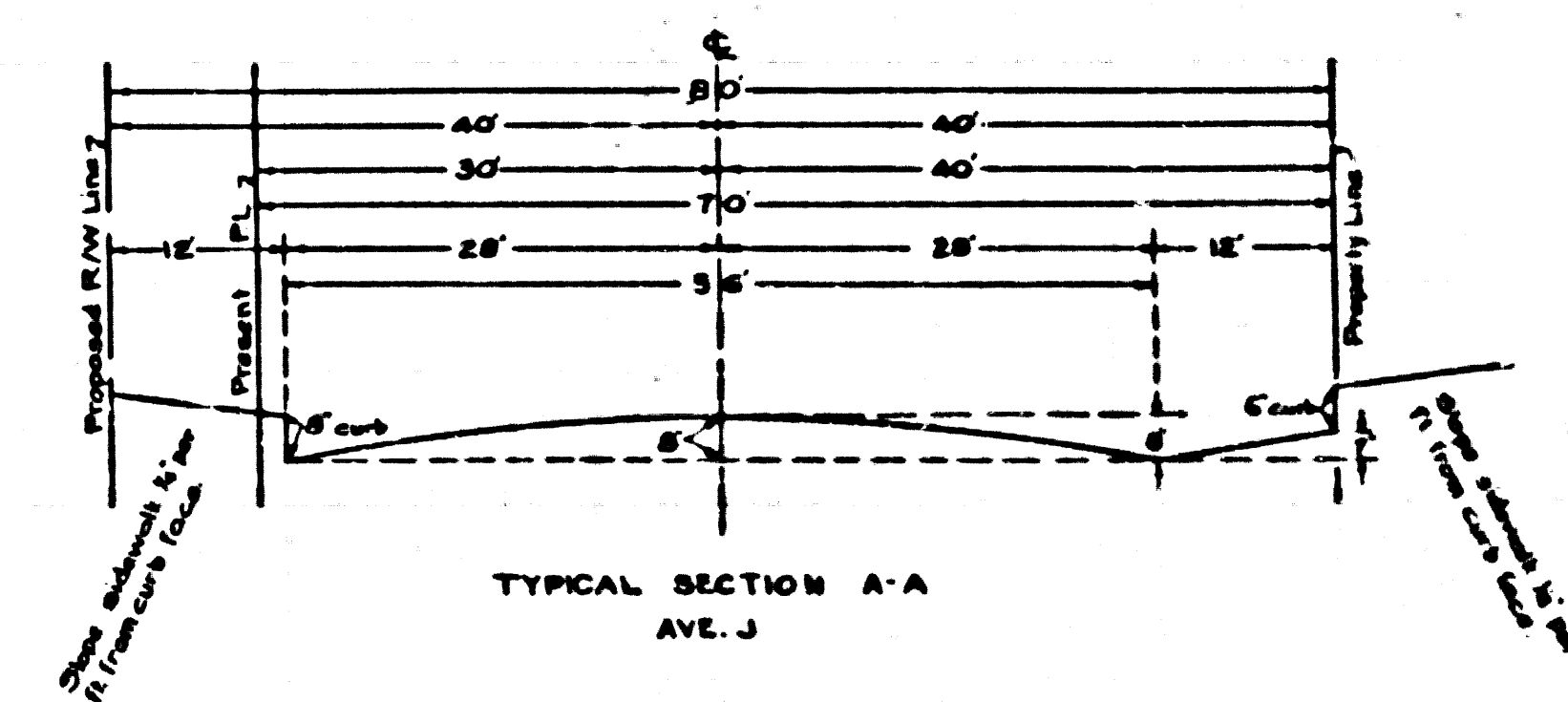
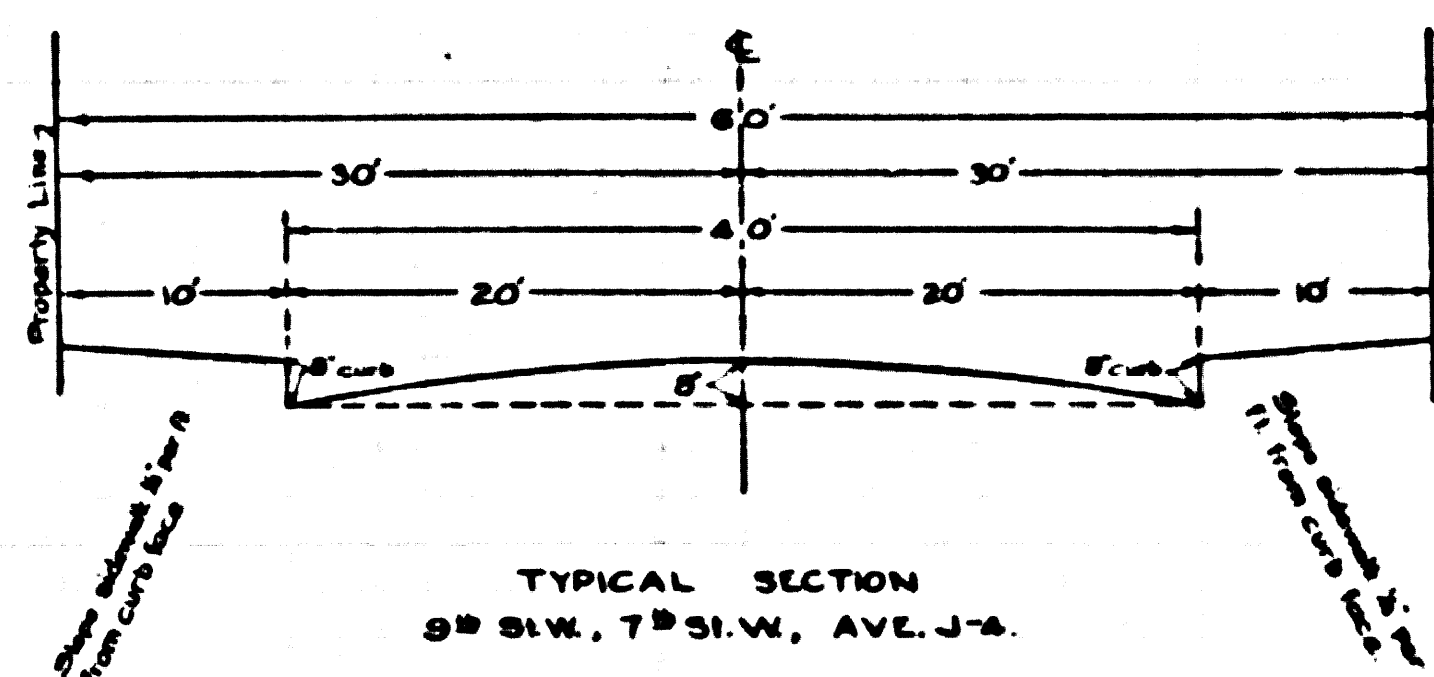


Profile Scale
 Hor. 1 inch = 80 ft.
 Vert. 1 inch = 8 ft.



Typical Sections Not To Scale

COUNTY OF LOS ANGELES
 MAP OF
ELEMENTARY SCHOOL SITE
LANCASTER SCHOOL DISTRICT
 SHOWING
PROPOSED GRADES OF ADJACENT STREETS
 COUNTY SURVEYORS MAP NO. B-2192
 SCALES AS SHOWN

INDEX 70

JOB NUMBER 5398

C.E. ARNOLD - COUNTY SURVEYOR
 SURVEYED JULY 1948

SURVEYED ON REQUEST OF THE BOARD OF TRUSTEES
 OF THE LANCASTER SCHOOL DISTRICT UNDER SEC.
 79 ORD. 4099, BY LETTER DATED JUNE 20, 1948.

BEARINGS ARE BASED ON THE BEARING OF AVE. J
 AS SHOWN ON C.S. B-831-2.

P.S. 1558-7-35

FIELD WORK BY..... E. A. ROSECRANS
 OFFICE WORK BY..... L. DE YILLA
 CHECKED BY..... R. R. MC PHERSON
 H. N. BRAUSTREET

PARKVIEW ELEMENTARY SCHOOL
 DATUM

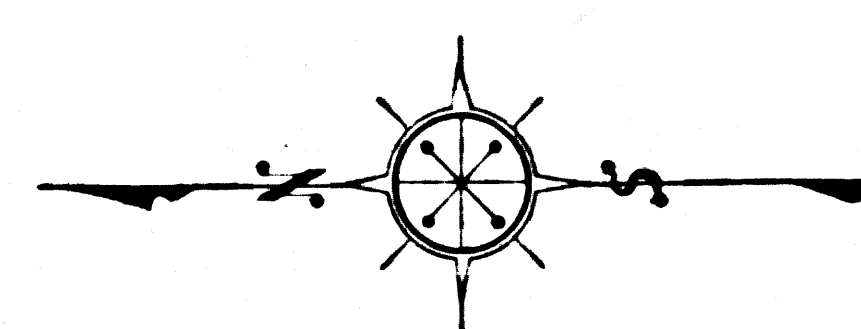
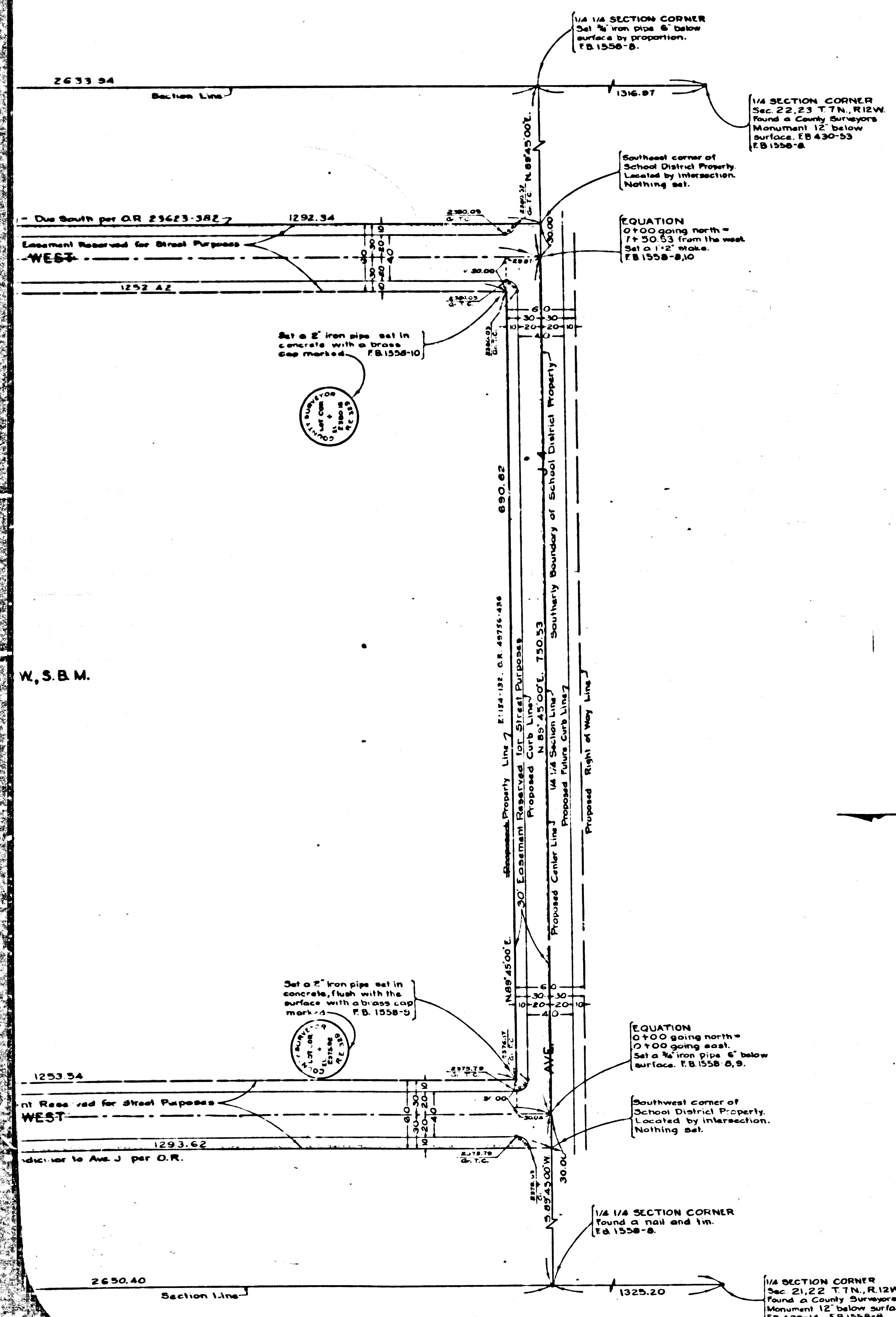
ELEVATIONS SHOWN HEREON ARE BASED ON L.A. CO. ROAD
 C&T B.M. NO. 5 LANCASTER PER L.R. 83-3 (ELEV. 2354.23)
 THE ELEVATION OF U.S.C.S. B.M. NO. 15 JUL 870 MAY 10 ON THE
 ABOVE DATUM IS 2355.51 IN 1953. THE ELEVATION OF
 SAME PER U.S. LEGS. ADJUSTMENT OF 692 IS 2354.919

Revised April 1951 by L.D.

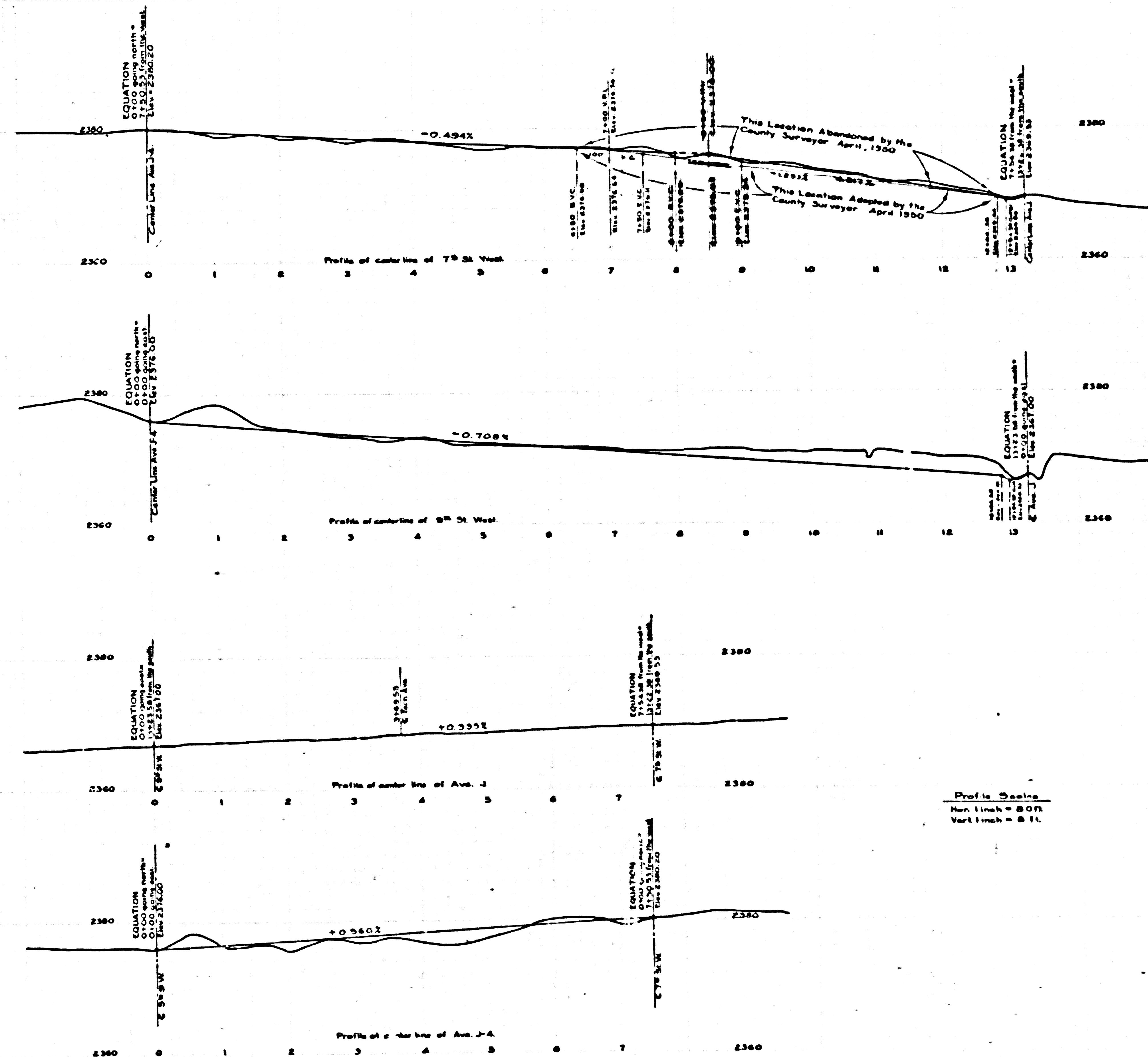
CSB-2192
 A10FA 3

COUNTY SURVEYORS MAP NO. B-518

COUNTY SURVEYORS MAP NO. B-518



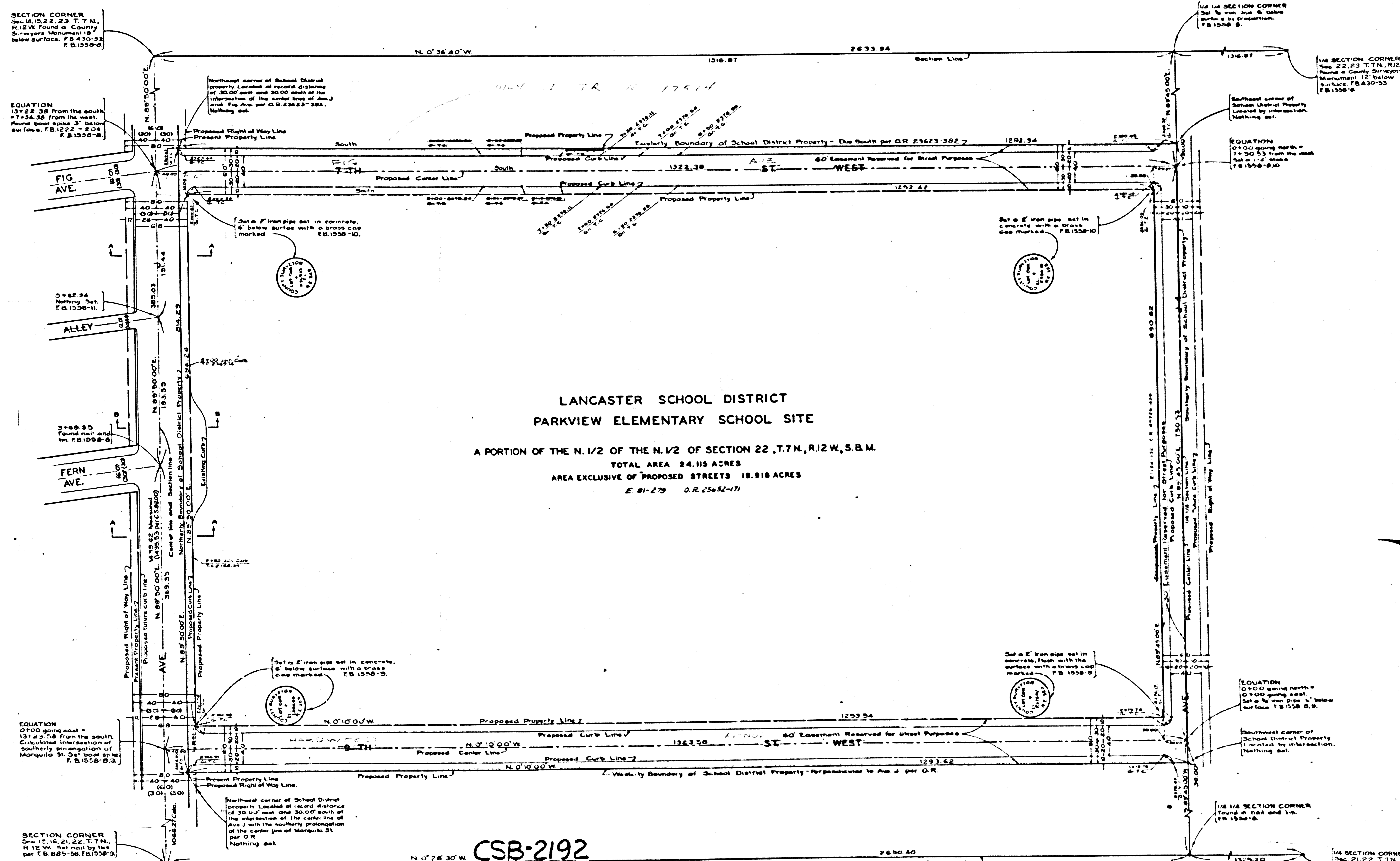
BOUNDARY MAP
Scale: 1" = 50'



CSB-2192
A20FA3

CONULY 2PAVELOE2 MAB MO' B-SIBS

CONULY 2PAVELOE2 MAB MO' B-SIBS



LANCASTER SCHOOL DISTRICT
 PARKVIEW ELEMENTARY SCHOOL SITE
 A PORTION OF THE N. 1/2 OF THE N. 1/2 OF SECTION 22, T.7N, R.12W, S.B.M.
 TOTAL AREA 24.115 ACRES
 AREA EXCLUSIVE OF PROPOSED STREETS 19.918 ACRES
 E. 81-279 O.R. 25652-171

CSB-2192
 A3CFA3

BOUNDARY
 Scale: 1" = 100'

SECTION CORNER
 Sec. 14, 15, 22, 23, T.7N,
 R.12W. Found a County
 Surveyors Monument 18
 below surface. F.B. 430-33
 F.B. 1558-9

EQUATION
 13'22.58 from the south
 7'34.58 from the west.
 Found local spike 3' below
 surface. F.B. 1272-204
 F.B. 1558-8

3'68.94
 Setting Set.
 F.B. 1558-11

3'68.93
 Found nail and
 tin. F.B. 1558-8

EQUATION
 0'100 going east =
 13'23.58 from the south.
 Calculated intersection of
 southerly prolongation of
 Marquette St. Set local to E.
 F.B. 1558-9, 2

SECTION CORNER
 Sec. 12, 14, 21, 22, T.7N,
 R.12W. Set nail by the
 per F.B. 685-58 F.B. 1558-9

Northwest corner of School District
 property. Located at record distance
 of 30.00' east and 30.00' south of the
 intersection of the center line of Ave. J
 and the Ave. per O.R. 23623-382.
 Nothing set.

Set a 6" iron pipe set in concrete,
 6" below surface with a brass cap
 marked. F.B. 1558-10.

Set a 6" iron pipe set in concrete,
 6" below surface with a brass
 cap marked. F.B. 1558-9.

Northwest corner of School District
 property. Located at record distance
 of 30.00' east and 30.00' south of
 the intersection of the center line of
 Ave. J with the southerly prolongation
 of the center line of Marquette St.
 per O.R.
 Nothing set.

1/4 SECTION CORNER
 Sec. 14, 15, 22, 23, T.7N,
 R.12W. Found a County
 Surveyors Monument 18
 below surface. F.B. 430-33
 F.B. 1558-9

EQUATION
 0'100 going north =
 7'50.53 from the west.
 Set a 1/2" iron pipe 2' below
 surface. F.B. 1558-8, 10

EQUATION
 0'100 going north =
 10'100 going east.
 Set a 1/2" iron pipe 2' below
 surface. F.B. 1558-8, 9

1/4 SECTION CORNER
 Found a nail and tin.
 F.B. 1558-8

1/4 SECTION CORNER
 Sec. 22, 23, T.7N, R.12W.
 Found a County Surveyors
 Monument 12 below
 surface. F.B. 430-33
 F.B. 1558-9

Southwest corner of
 School District Property
 Located by intersection
 Nothing set.

Southwest corner of
 School District Property
 Located by intersection.
 Nothing set.

1/4 SECTION CORNER
 Sec. 21, 22, T.7N, R.12W.
 Found a County Surveyors
 Monument 12 below surface.
 F.B. 430-14 F.B. 1558-8