

COUNTY OF LOS ANGELES  
 MAP OF  
**LA BREA AVENUE CUT-OFF**  
 STOCKER STREET AND BOTILLER AVENUE  
 FROM  
 LA CIENEGA BOULEVARD  
 TO  
 LA BREA AVENUE  
 COUNTY SURVEYORS MAP NO B-2196  
 SCALE - 1 INCH = 50 FT.

JOB NUMBER 6546  
 C. E. ARNOLD - COUNTY SURVEYOR  
 SURVEYED SEPT-1948 & AUGUST-1949  
 SURVEYED ON REQUEST OF THE REGIONAL  
 PLANNING COMMISSION UNDER RULE 21,  
 ORD. 29, (NOW SEC. 79-ORD. 4098) BY  
 LETTER DATED MARCH 26, 1942 AND AS  
 AUTHORIZED BY THE BOARD OF SUPERVISORS  
 IN THEIR ORDER OF JUNE-1, 1938.  
 BEARINGS ARE BASED ON THE CALIFORNIA  
 COORDINATE SYSTEM, JUNE 7, PER CHAPTER  
 1307, STATUTES 1947. SEE C.S. 8423.  
 F. B. 1155-117-118; 125-132  
 FIELD WORK BY FR BLANCHARD  
 OFFICE WORK BY HUM HIGGINS  
 RWM MALLISTER  
 CHECKED BY D.M. FINLEY

INDEX 24

Revised December 1949, R.W.M.A.  
 Issued May 1960 by H. P.R.

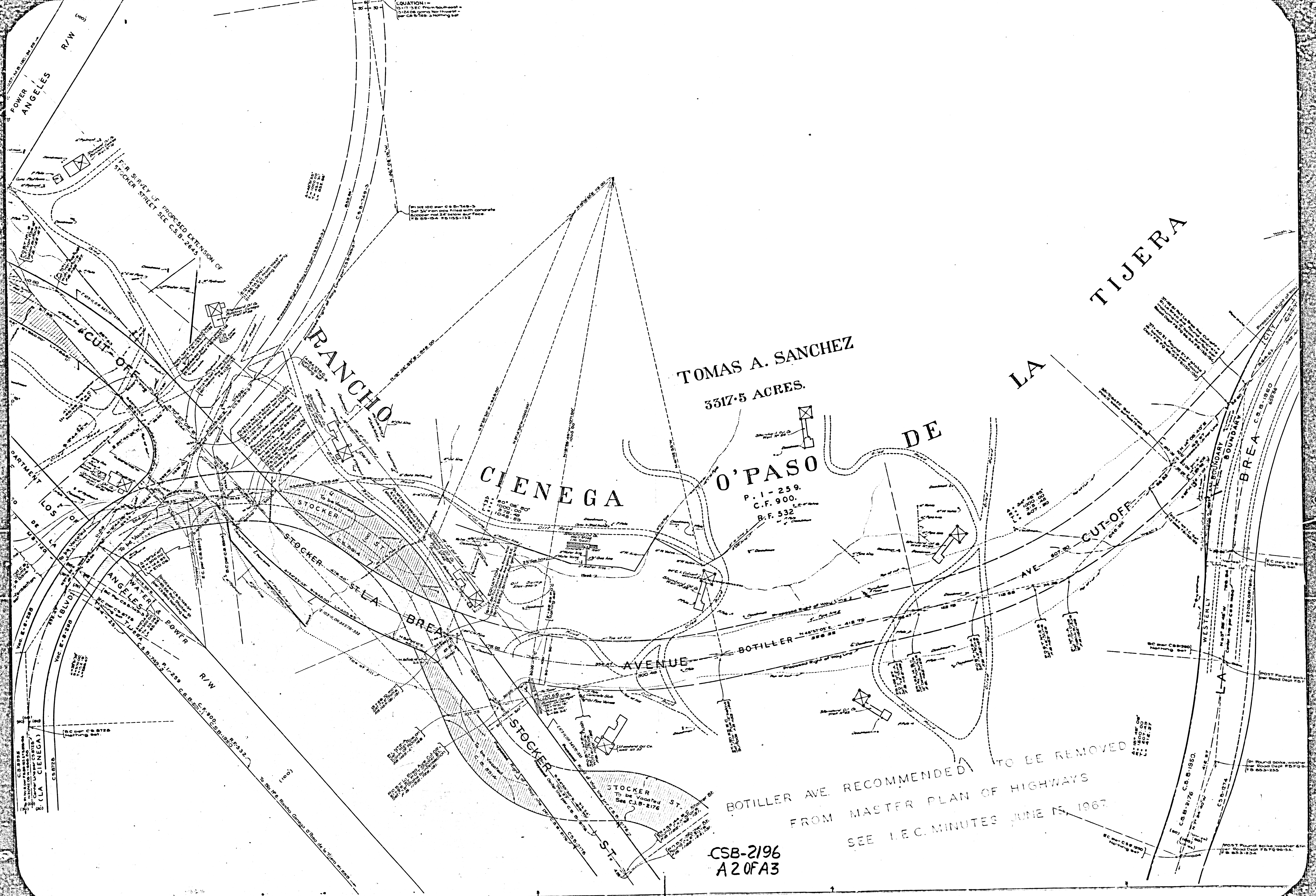
FOR TOPOGRAPHIC MAP SEE C.S.B-1777-4  
 NOTE: La Brea Ave cut-off as shown on this Map combined with Stocker St as shown on C.S. B-2176 is an alternate location to that proposed for La Brea Parkway as shown on C.S. B-1950. The latter proposal shows separations and interchange connections at Stocker, La Brea, Overhill intersections and a grade separation of La Cienega Blvd junction. This alternate location proposes channelized intersections without grade separations.

CSB-2196  
 A10FA3

RECOMMENDED TO BE REMOVED  
 MASTER PLAN OF HIGHWAYS  
 SEE I.E.C. MINUTES JUNE 15, 1967.

COUNTY OF LOS ANGELES MAP NO B-2196

COUNTY OF LOS ANGELES MAP NO B-2196



EQUATION: -  
13+17.3 EC from Southwest -  
13+24.08 from Northwest -  
per CSB-749-3 Nothing set

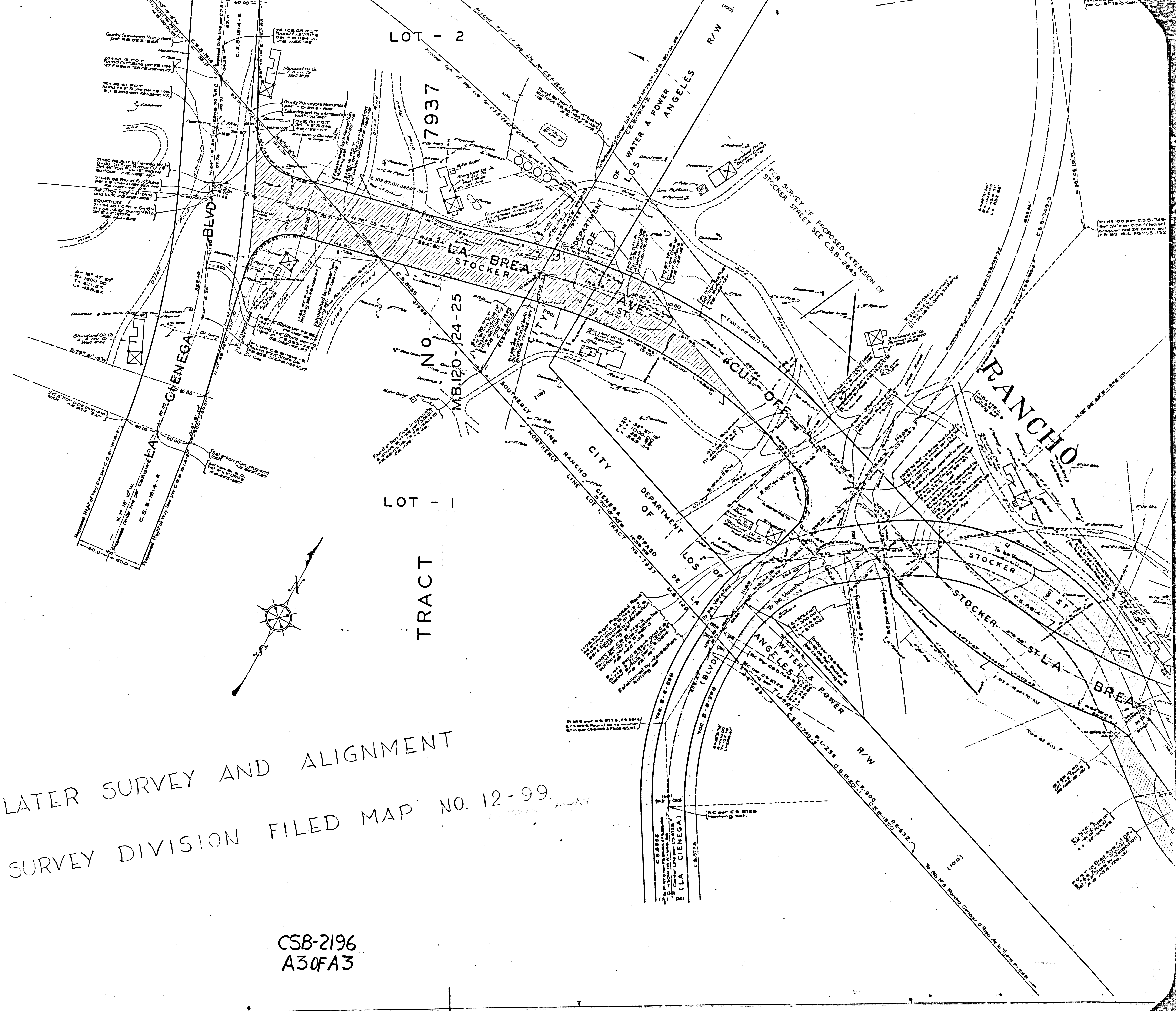
PI No 100 per CSB-749-3  
Set 3/4" iron pipe filled with concrete  
Scoop 24" below surface  
to CS-104 P. 1155-132

TOMAS A. SANCHEZ  
3317.5 ACRES.

P. I. - 259.  
C.F. 900.  
B.F. 532

BOTTILLER AVE. RECOMMENDED TO BE REMOVED  
FROM MASTER PLAN OF HIGHWAYS  
SEE I.E.C. MINUTES JUNE 15, 1967.

CSB-2196  
A2 OF A3



FOR LATER SURVEY AND ALIGNMENT  
 SEE SURVEY DIVISION FILED MAP NO. 12-99.

CSB-2196  
 A30FA3