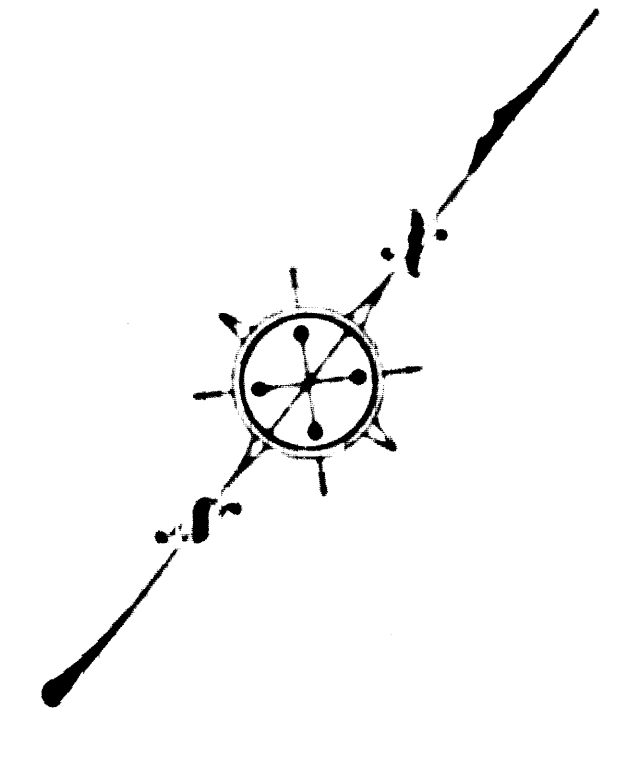
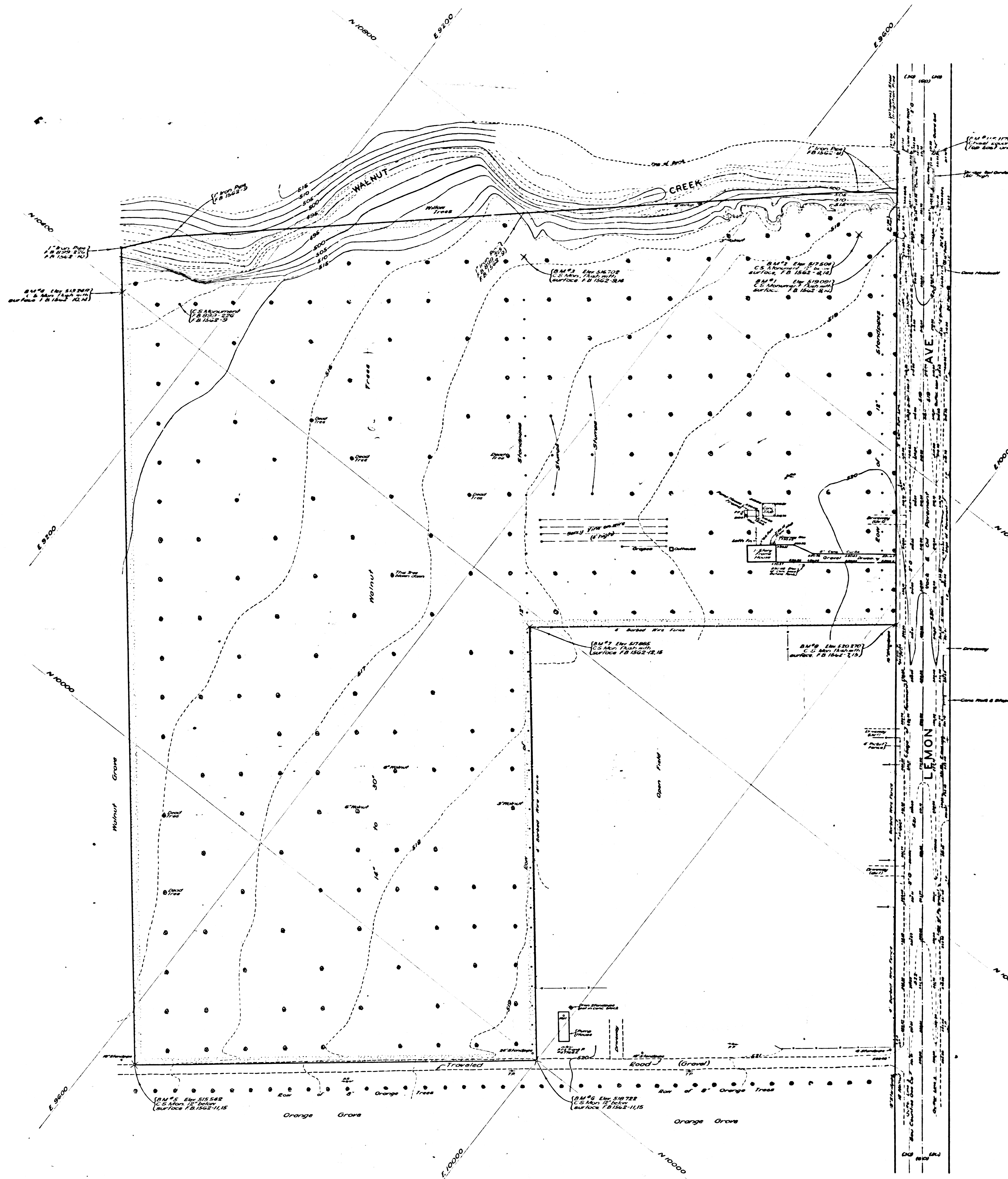


COUNTY OF LOS ANGELES  
 MAP OF  
**WALNUT PARK**  
 BEING  
 LOT 3 AND A PORTION OF LOT 2 - C. N. EARL'S  
 SUBDIVISION OF THE RANCHO LA PUENTE M.R. 42-31  
 COUNTY SURVEYORS MAP NO B-2197  
 SCALE: 1 INCH = 50 FT.

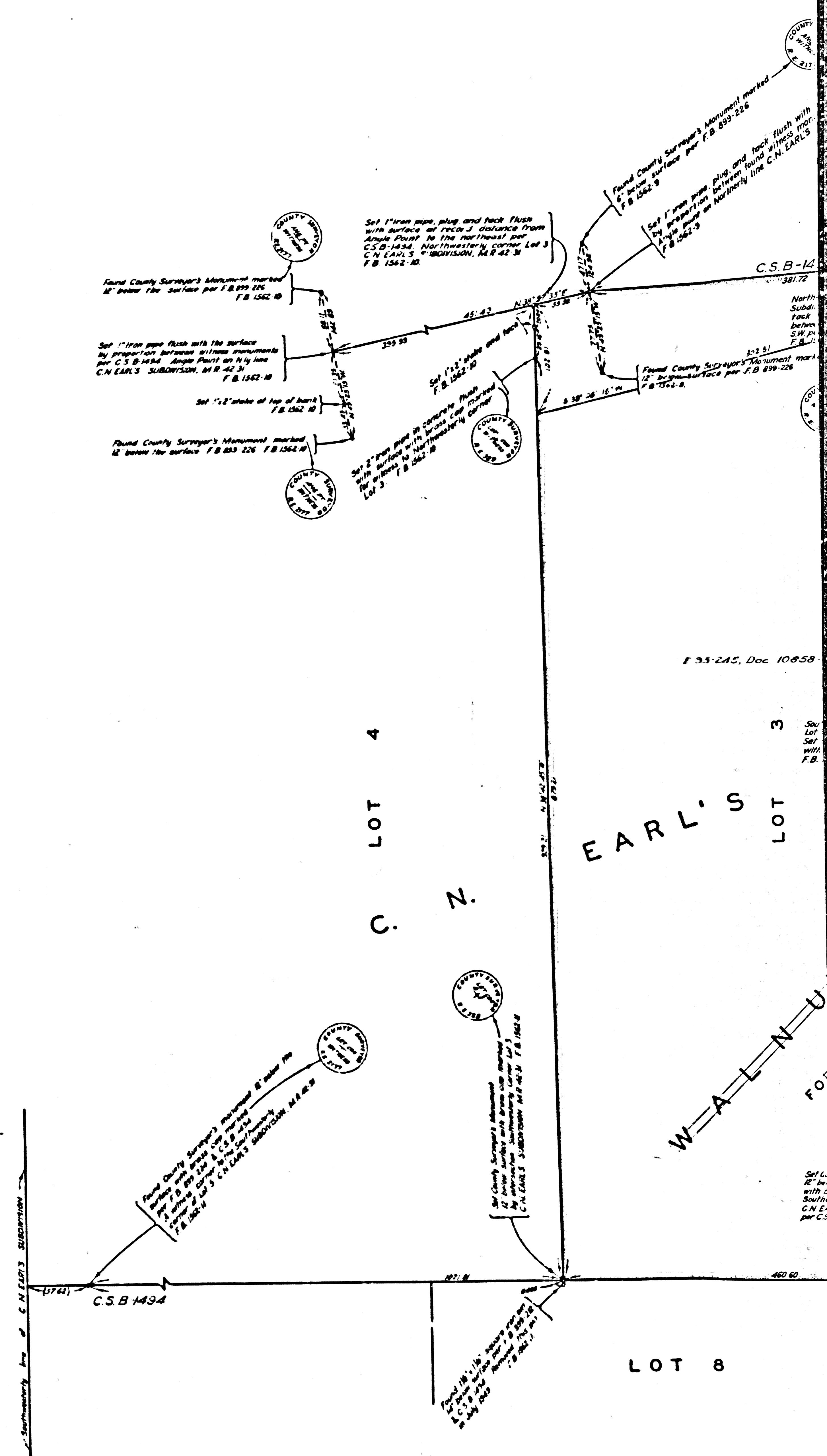
JOB NUMBER 85'S  
 C. E. ARNOLD - COUNTY SURVEYOR  
 SURVEYED JULY 1949  
 SURVEYED ON REQUEST OF THE DIRECTOR, DEPARTMENT OF  
 PARKS AND RECREATION UNDER SECTION 78, ORG. 4089 BY  
 LETTER DATED MAY 24, 1949  
 BEARINGS ARE BASED ON THE BEARING OF  
 LEMON AVENUE AS SHOWN ON C.S.B. 1494  
 F.B. 1582-9-12  
 FIELD WORK BY D. E. HOLMES  
 OFFICE WORK BY D. J. STELMA INDEX 39  
 CHECKED BY S. H. MILLER

Name established by Board Order: Min. Ex. 408-107 See E. 158-498

CSB-2197  
 A1 OF A2



MARGINAL MAP  
 SHOWING  
 TOPOGRAPHY  
 SCALE: 1 INCH = 40 FT.  
 FIELD WORK BY ..... W. BRADEN  
 OFFICE WORK BY ..... Y. ITO  
 CHECKED BY ..... M. BRADSTREET  
 P. T. SHEET D-267  
 DATUM - MEAN SEA LEVEL  
 ELEVATIONS SHOWN HEREON ARE BASED  
 ON THE 1928 U.S.C. & G.S. ADJUSTMENT OF  
 U.S.G.S.M. NEAR LEMON AVE. AND S.P.A.R.  
 (WALNUT) (U.S. 1174)



CSB-2197  
 A2 OF A2