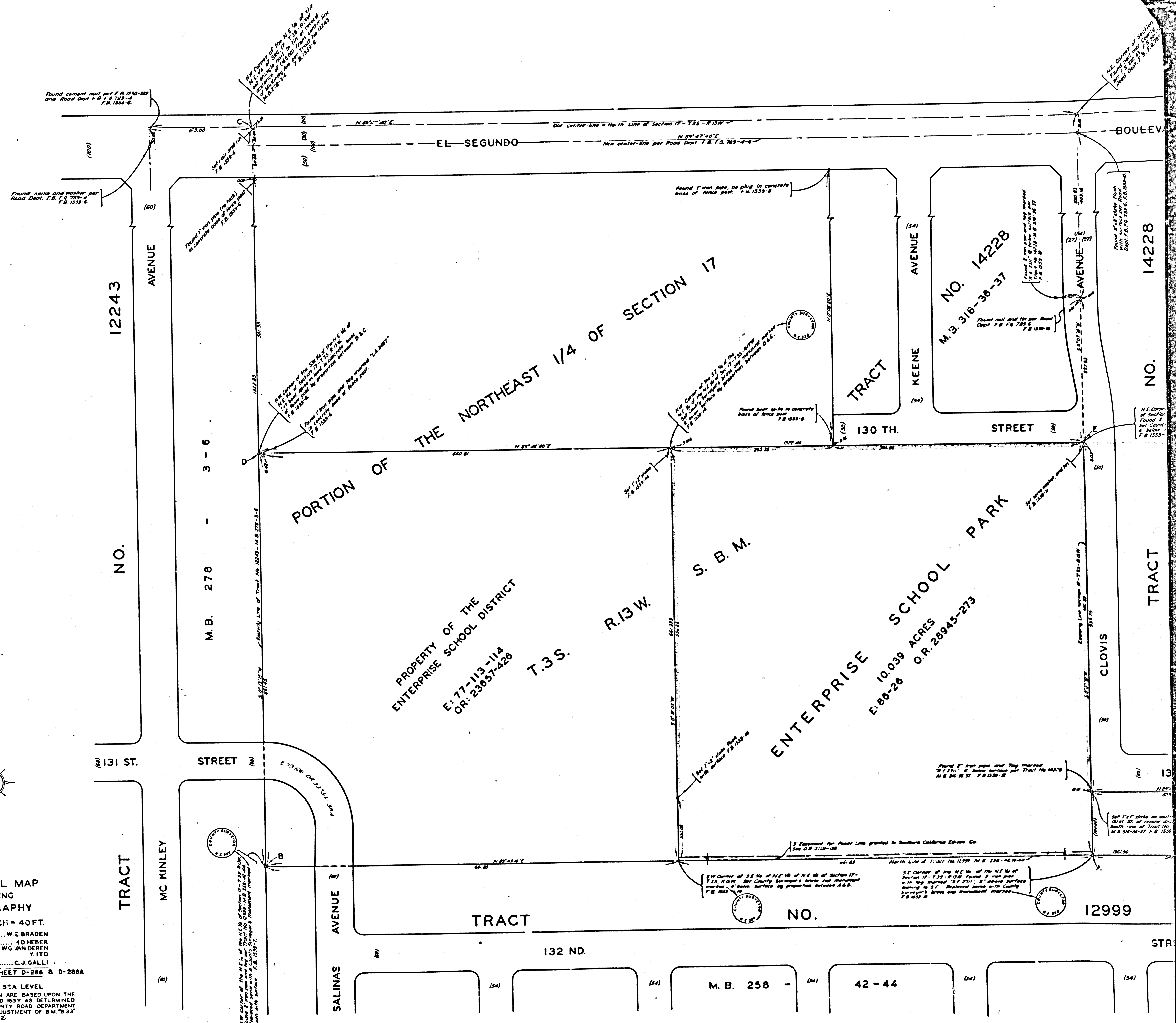
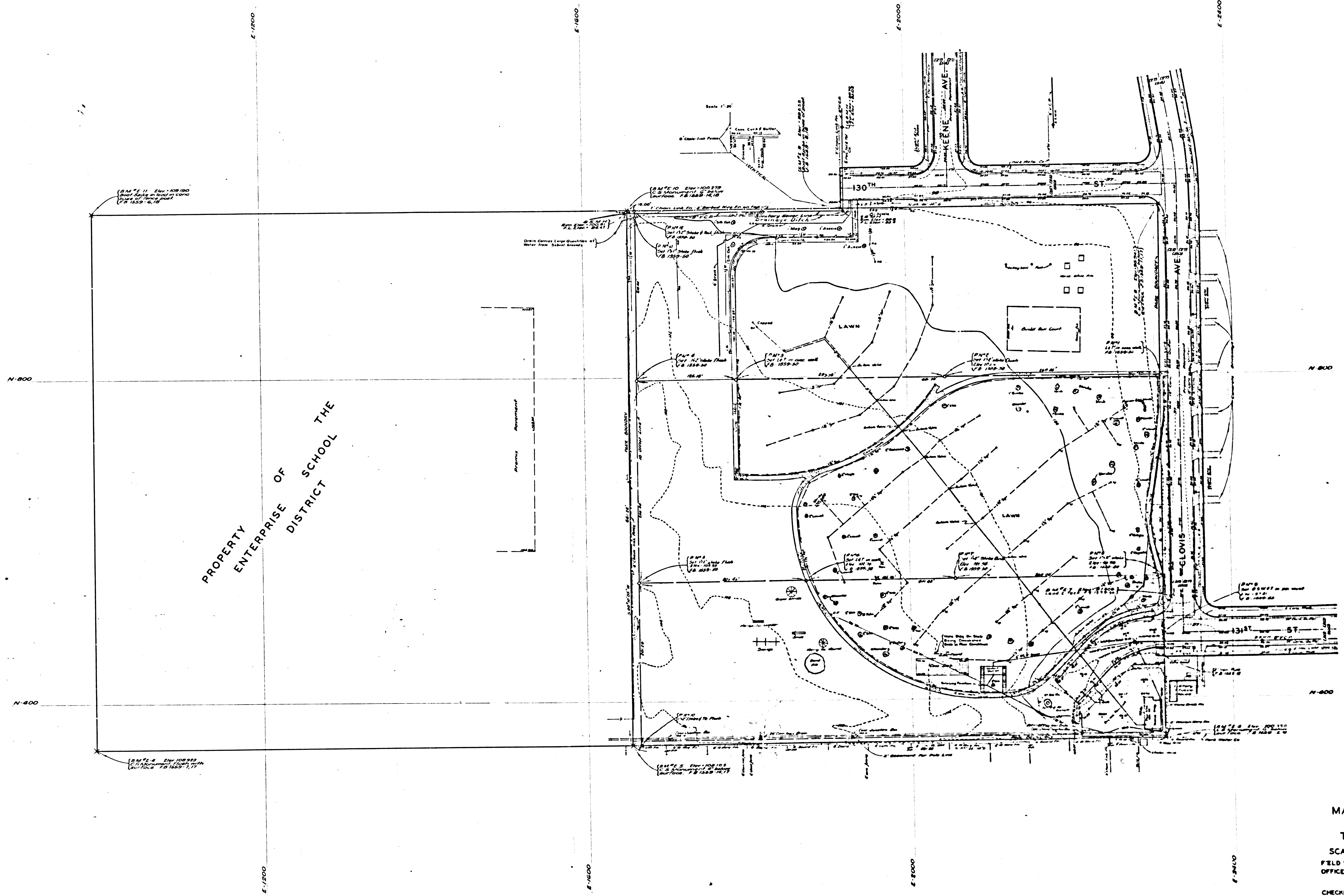


MARGINAL MAP
SHOWING
TOPOGRAPHY
SCALE: 1 INCH = 40 FT.
FIELD WORK BY..... W.E. BRADEN
OFFICE WORK BY..... L.D. HEBER
W.C. ANDERSON
Y. ITO
CHECKED BY..... C.J. GALLI
PLANE TABLE SHEET D-288 & D-288A

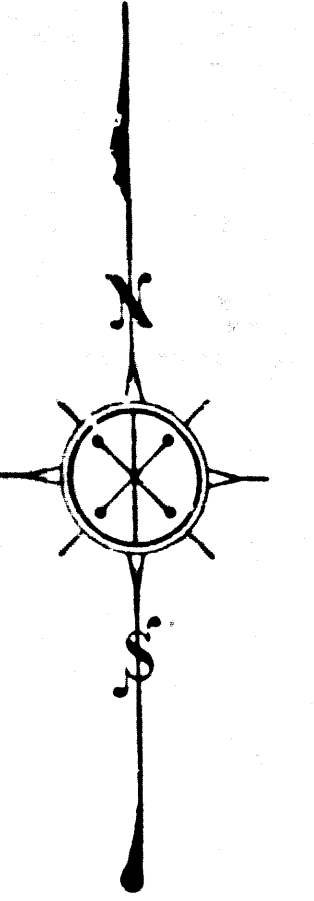
DATUM - MEAN SEA LEVEL
ELEVATIONS SHOWN HEREON ARE BASED UPON THE
ELEVATION OF B.M. 1827 AND 1837 AS DETERMINED
BY THE LOS ANGELES COUNTY ROAD DEPARTMENT
FROM U.S.C. & G.S. 1932 ADJUSTMENT OF B.M. 78 53"
(U.S. 2)
Drawn By: D. Wang, June 1955
per note here, issue August 1954
Revision Made By: W.S. Van Dorn, 1955
Revision Made By: L.C. Rappert, 12-1-55
Revision Made By: E.W. Miller, 6-1-58
Revision Plan: H-7, Sheet: G-288-A



CSB-2198
A20FA3



PROPERTY
ENTERPRISE OF
SCHOOL DISTRICT THE



MARGINAL MAP
SHOWING
TOPOGRAPHY
SCALE: 1 INCH = 40 FT
FIELD WORK BY..... W.E. BRADY
OFFICE WORK BY..... H.D. HERR
WG. VAN DER
Y. IT
CHECKED BY..... C.J. GALL
PLANE TABLE SHEET D-28E
DATUM - MFAN SEA LEVEL
ELEVATIONS SHOWN HEREON ARE BASED
ON ELEVATION OF B.M. 1827 AND 1837 AS D.
BY THE LOS ANGELES SANITY ROAD
FROM U.S.C. & G.S. 1932 ADJUSTMENT OF
(U.S. 2)
Checked by C.J. Gall, July 1925
and same with same August 1926
Checked by H.D. Herr, W.E. Brady, 1925
Checked by H.D. Herr, W.E. Brady, 1925
Checked by H.D. Herr, W.E. Brady, 1925
Checked by H.D. Herr, W.E. Brady, 1925

CSB-2198
A30FA3