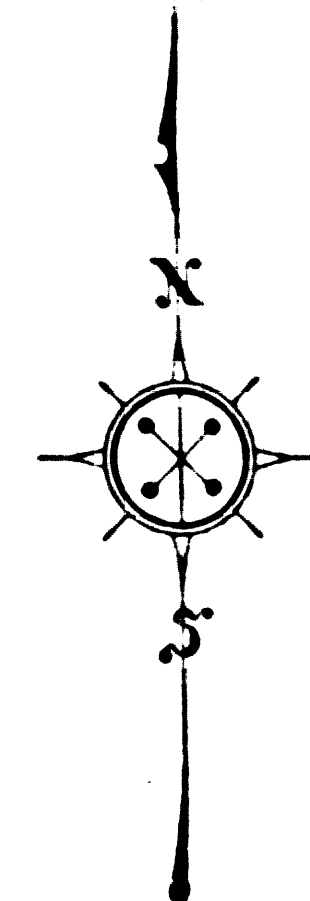
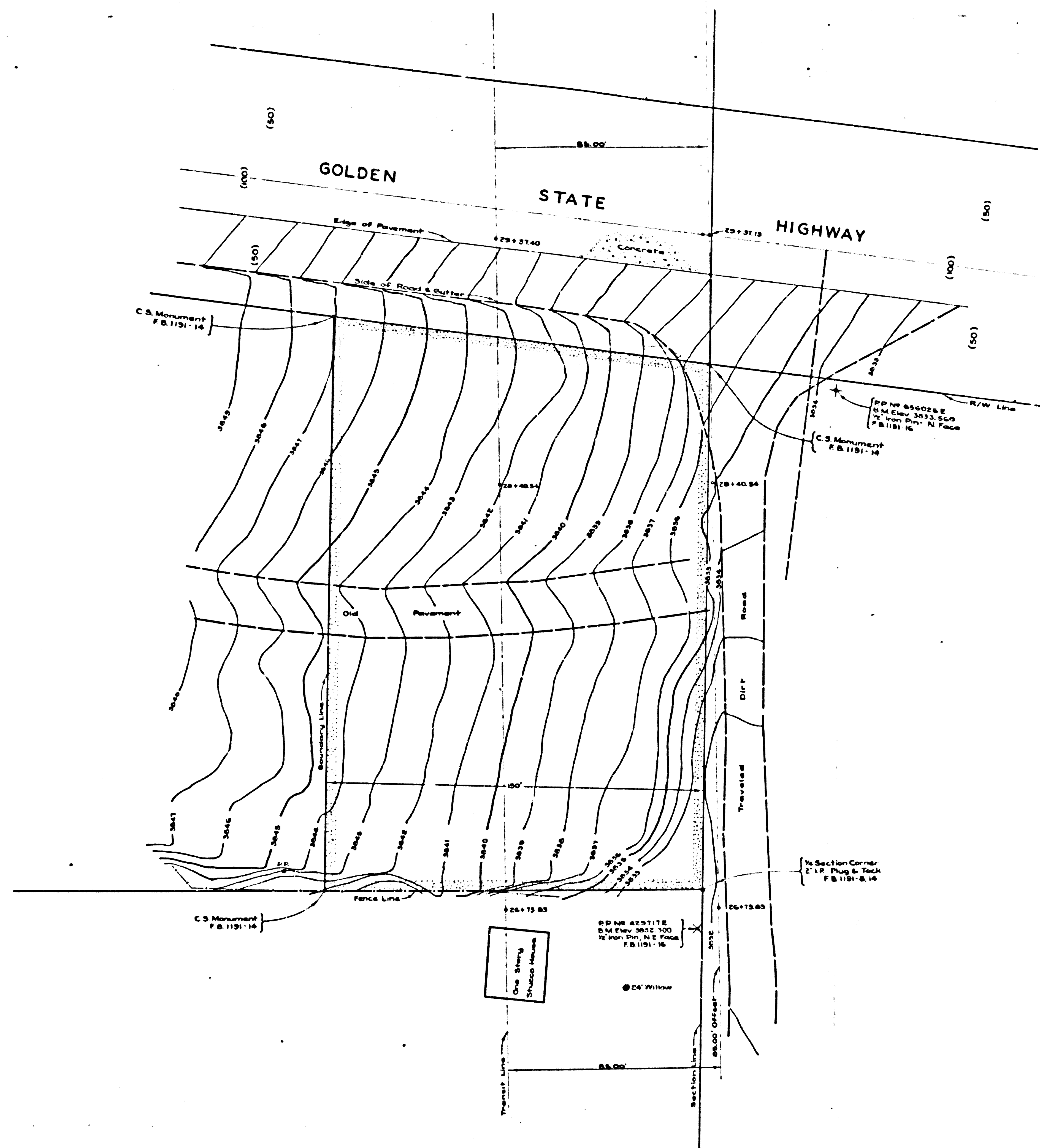


COUNTY OF LOS ANGELES
 MAP OF
GORMAN SHERIFF'S SUBSTATION SITE
 BEING
 A PORTION OF THE N.E. 1/4 OF
 SECTION 11, T.8 N., R.19 W., S. B. M.
 COUNTY SURVEYORS MAP NO. B-2199
 SCALE: 1 INCH = 50 FT.

JOB NUMBER 8561
 C. E. ARNOLD - COUNTY SURVEYOR
 SURVEYED: JULY AND AUGUST 1949
 SURVEYED ON REQUEST OF THE CHIEF
 ADMINISTRATIVE OFFICE, UNDER SEC. 79,
 ORD. 4099, BY LETTER DATED JUNE
 23, 1949.
 BEARINGS ARE BASED ON THE BEARING
 OF THE SOUTH LINE OF SECTION 11,
 T.8 N., R.19 W., AS SHOWN ON C.S.B-711-3
 F. B. 1191---5-24
 FIELD WORK BY F. G. HOWARD
 OFFICE WORK BY D. J. STELMA
 O. E. SWANSON
 CHECKED BY K. R. Mc PHERSON

INDEX 17

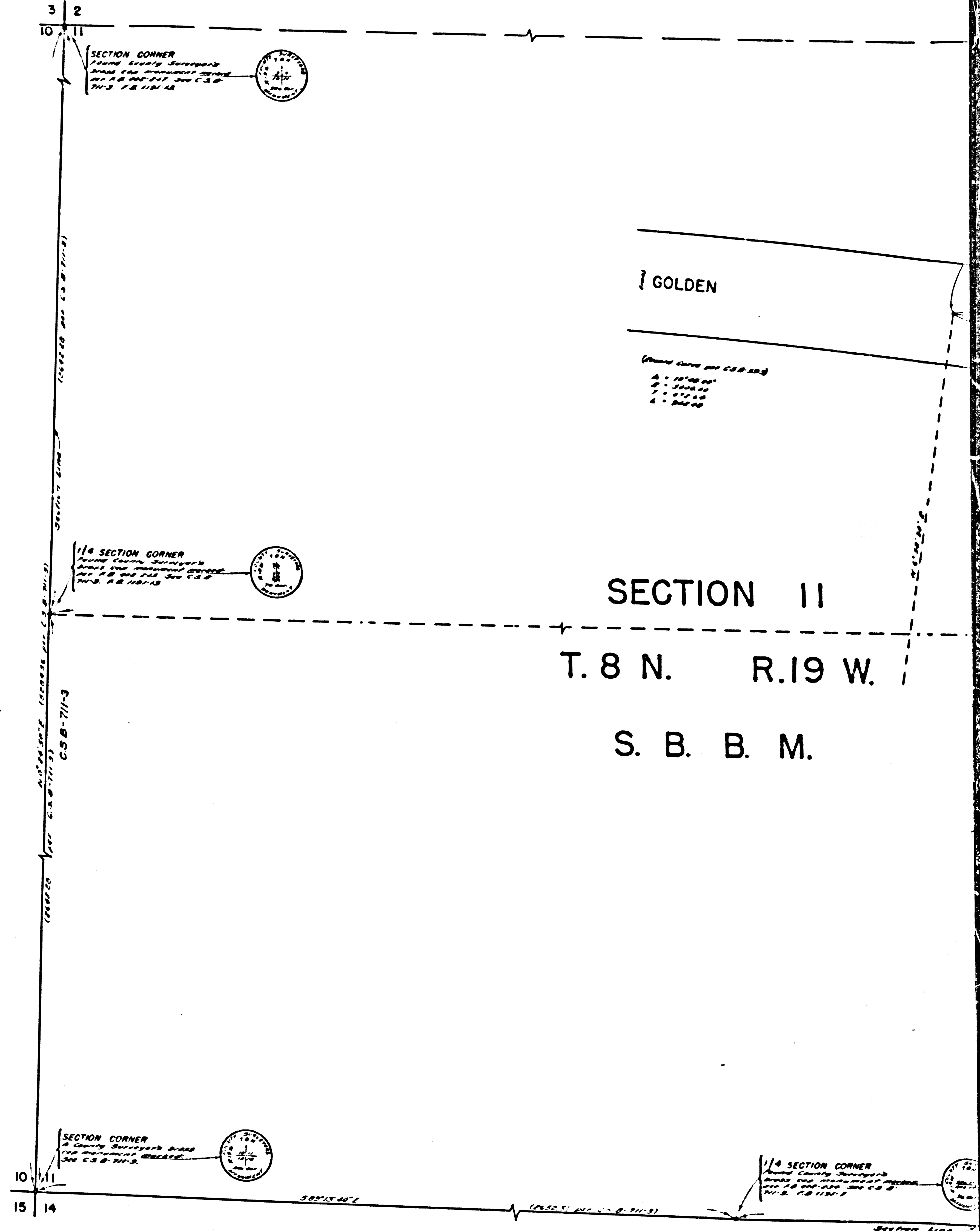
CSB-2199
A1 OF A 2



MARGINAL MAP
SHOWING
TOPOGRAPHY
SCALE: 1 INCH = 20 FT.
FIELD WORK BY: F. C. HOWARD
OFFICE WORK BY: R. E. SNYDER
J. B. MACOMBER
CHECKED BY: L. DE TILLA

DATUM
ELEVATIONS SHOWN HEREON ARE BASED ON THE
STATE HIGHWAY ELEVATION OF U.S.C. & G.S. BM "B"
54-926 (U.S. 2226) PER C.S. B. 503.
NOTE: ADD 0.526 FT. TO ELEVATIONS SHOWN
HEREON TO CONVERT TO MEAN SEA LEVEL DATUM
BASED ON THE 1942 U.S.C. & G.S. ADJUSTMENT (U.S. 2226)

CSB-2199
A20FA2



G.S. B-711-3