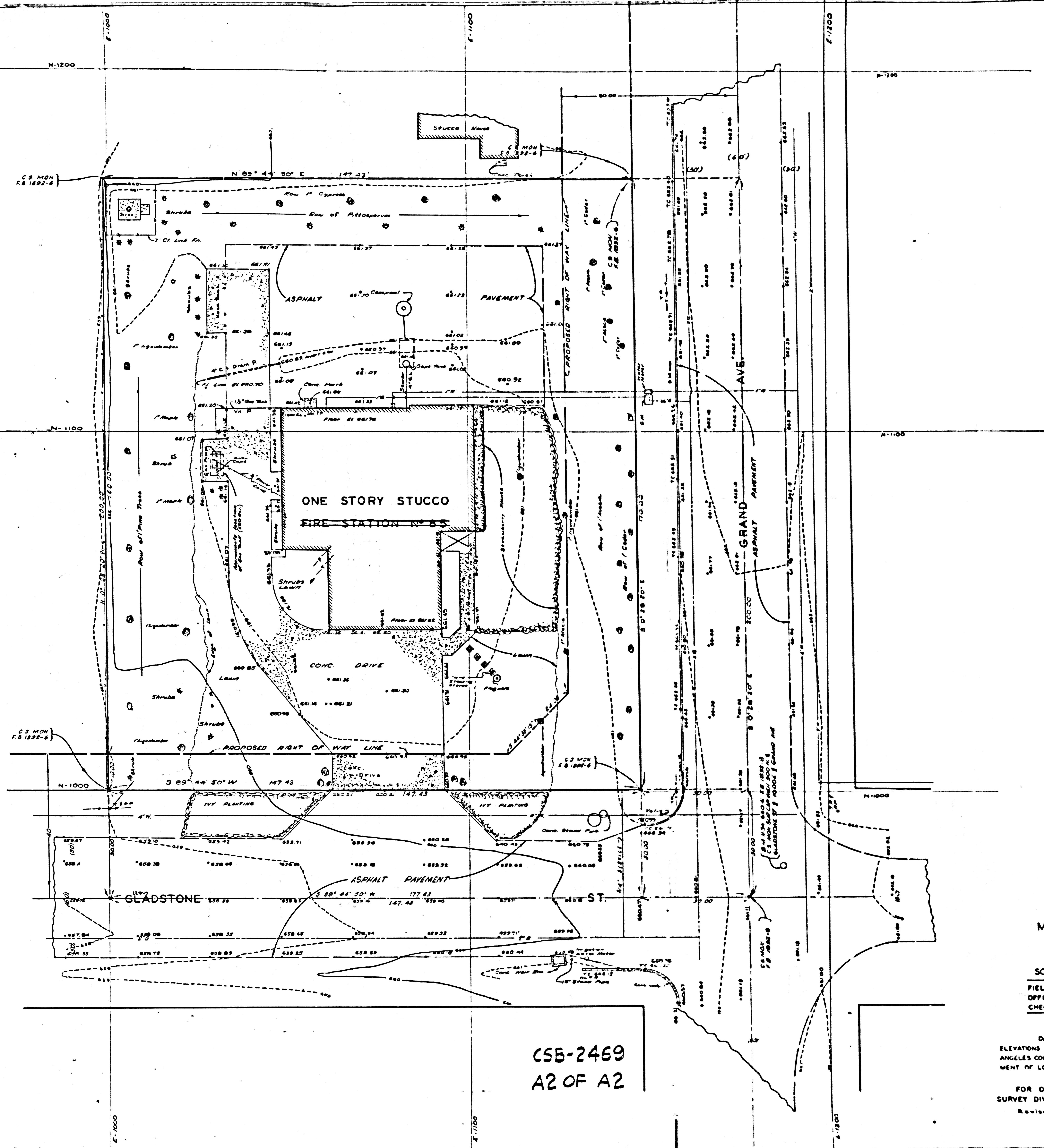


COUNTY OF LOS ANGELES
 MAP OF
~~CHARTER OAK~~
~~FIRE STATION No 85~~
 IN THE
 CONSOLIDATED COUNTY FIRE PROTECTION DISTRICT
 BEING A PORTION OF LOT 6
 TRACT No 387 M.B. 21-178, 179.
 COUNTY SURVEYORS MAP No B-2469
 SCALE: 1 INCH = 50 FEET
 JOB NUMBER A-365
 WILLIAM J. FOX-COUNTY SURVEYOR
 SURVEYED-DECEMBER 1953
 SURVEYED ON REQUEST OF THE CHIEF ENGINEER
 COUNTY FIRE PROTECTION DISTRICTS
 UNDER SEC. 79 ORD. 4099, BY LETTER
 DATED NOVEMBER 30, 1953.
 BEARINGS ARE BASED ON THE CALIFORNIA
 COORDINATE SYSTEM ZONE 7 PER ACT 8351
 GENERAL LAWS. SEE C.S. 9423.
 F.B. 1892-B-15
 FIELD WORK BY G.G. PORTER
 OFFICE WORK BY T.M. ICHIKI
 CHECKED BY K.R. WILKERSON
 THIS SITE ABANDONED FOR FIRE STATION PURPOSES.

CSB-2469
 A1 OF A2

COMPL. SURVEYORS MAP NO. B-5483

COMPL. SURVEYORS MAP NO. B-5483



CSB-2469
A2 OF A2

MARGINAL MAP
SHOWING
TOPOGRAPHY
SCALE: 1 INCH = 10 FT.
FIELD WORK BY J.P. MENNE
OFFICE WORK BY S. BOUCHER
CHECKED BY L.W. BACON

P.T. SHEET E-490
DATUM - MEAN SEA LEVEL
ELEVATIONS SHOWN HEREON ARE BASED ON THE LOS ANGELES COUNTY PRECISE LEVEL NET, 1952 ADJUSTMENT OF LOS ANGELES COUNTY S.M. 11-34
FOR ORIGINAL TOPOGRAPHY SEE SURVEY DIVISION FILE NO. 53-31, P.B. 1892-7-15
Revised 10-58 under 34,000118

