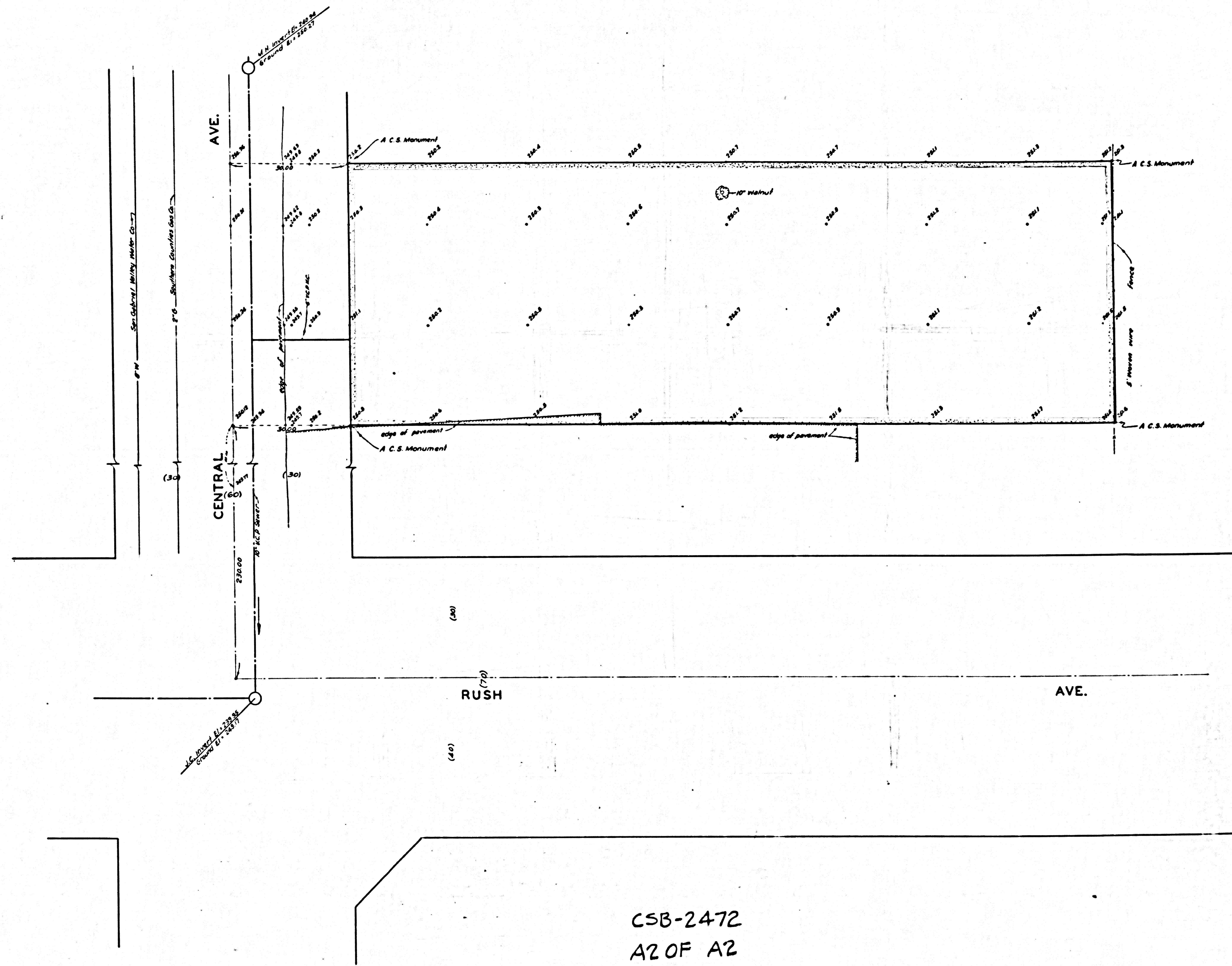


COUNTY OF LOS ANGELES
 MAP OF
~~LOS ANGELES CO~~ ~~CHICO FIRE STATION NO. 90~~
 IN THE
~~CONSOLIDATED COUNTY FIRE PROTECTION DISTRICT~~
 BEING
 A PORTION OF LOT 59
 TRACT NO. 621 M.B. 15-182-183
 COUNTY SURVEYORS MAP NO. B-2472
 SCALE: 1 INCH = 50 FT.
 JOB NUMBER A-368

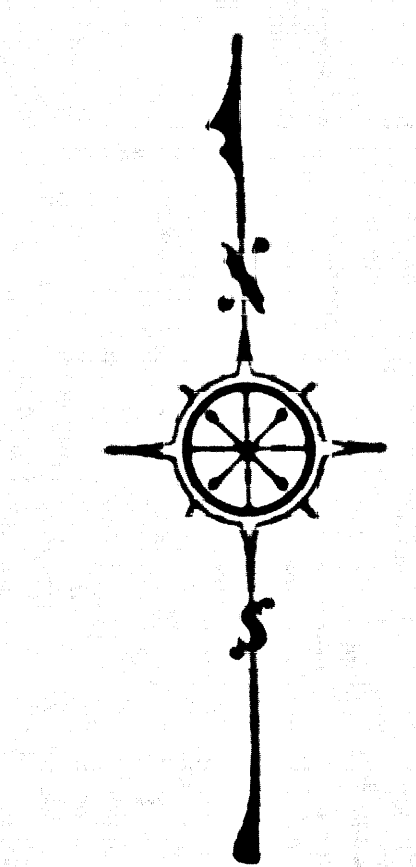
WILLIAM J. FOX - COUNTY SURVEYOR
 SURVEYED DEC. 1953
 SURVEYED ON REQUEST OF THE CHIEF ENGINEER
 OF THE COUNTY FIRE PROTECTION DISTRICTS
 UNDER SEC. 79, ORD. 4099 BY LETTER DATED
 NOV. 30, 1943.
 BEARINGS ARE BASED ON THE BEARING OF
 RUSH AVE. AS SHOWN ON C.S.B. 304-2
 F. B. 1892-95-50
 FIELD WORK BY R. J. MITCHELL
 OFFICE WORK BY R. A. M'PHERSON
 C. E. DROWN
 CHECKED BY R. A. M'PHERSON

SEE C.S.B. 3035 FOR PROPOSED SITE
 THIS SITE ABANDONED FOR FIRE STATION PURPOSES
 FOR CURRENT FIRE STATION SITE N°90 SEE C.S.B. 3035

CSB-2472
 A1 OF A2



CSB-2472
A2 OF A2



MARGINAL MAP
SHOWING
TOPOGRAPHY
SCALE: 1 INCH = 10 FT.
FIELD WORK BY R. J. MITCHELL
OFFICE WORK BY C. E. DROWN
CHECKED BY H. R. M'PHERSON
F. B. 1622-45-50

DATUM - MEAN SEA LEVEL
ELEVATIONS SHOWN HEREON ARE BASED
ON B.M. 1177 F. B. 1728-60. THE ELE-
VATION OF WHICH WAS DETERMINED
FROM U.S.C. & G.S. B.M.'S L-94 (S. 2424)
AND (U.S. 2030) BASED UPON THE U.S.C.
& G.S. ADJUSTMENT OF 1934.

