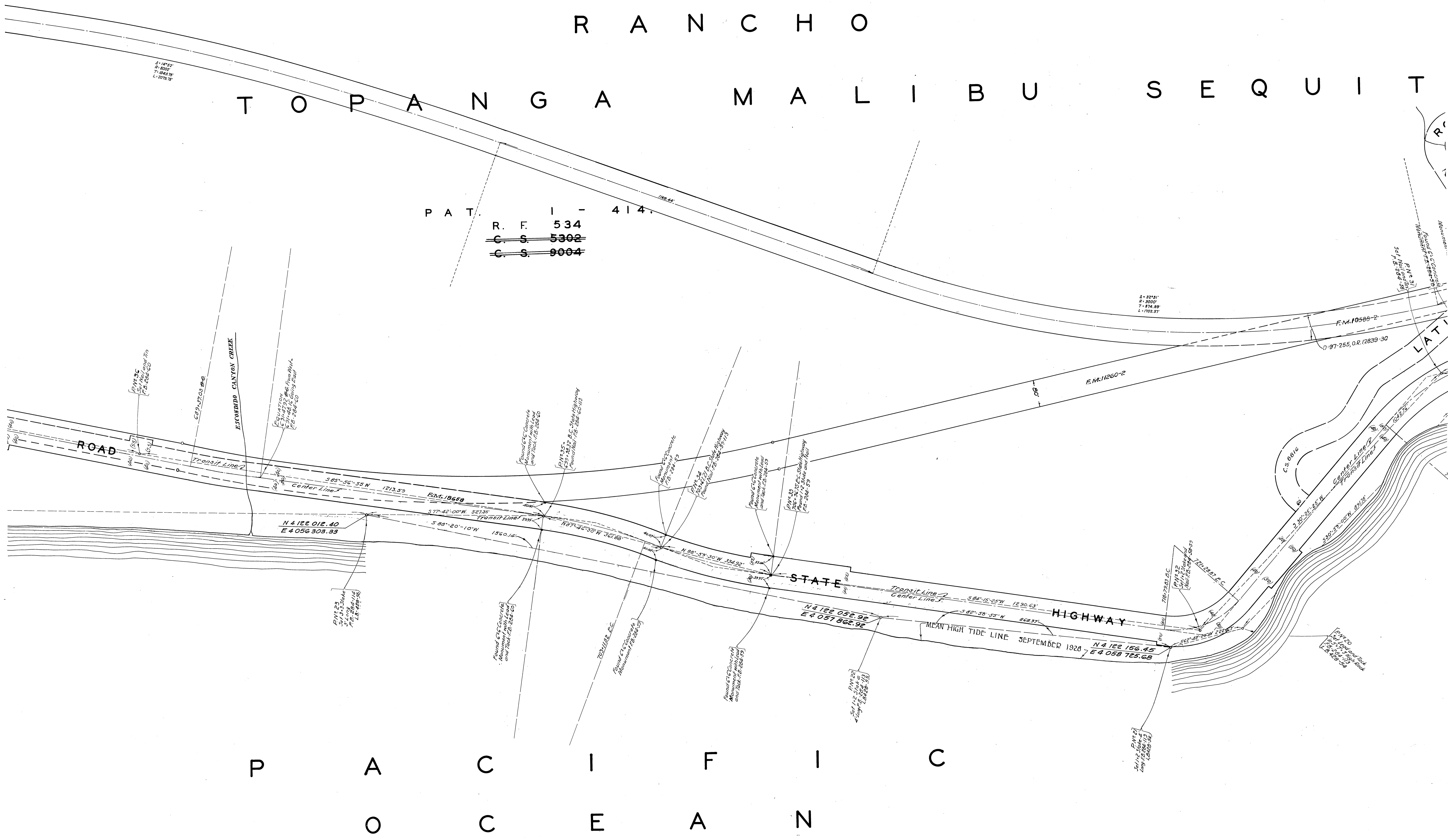


C 2 B - 2403

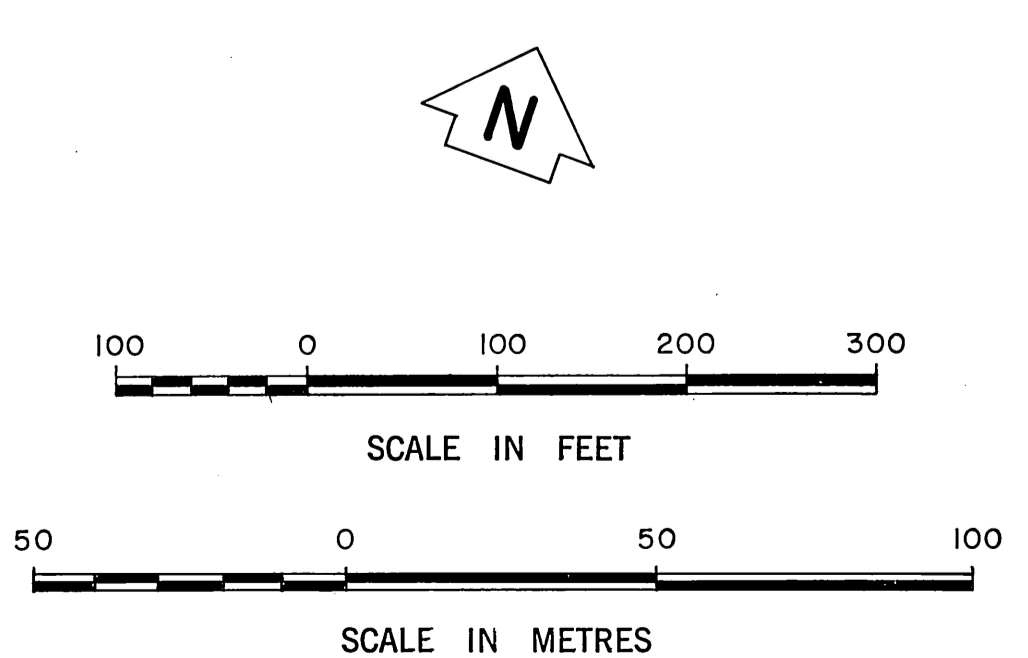
# R A N C H O T O P A N G A M A L I B U S E Q U I T

P A T. I. - 414.  
R. F. 534  
~~C. S. 5302~~  
~~C. S. 9004~~



# P A C I F I C O C E A N

**NOTE:**  
 This map is filed to correct a portion of C.S.B-307-6 as drawn in 1928.  
 The point designated "P N 22" shown on that map was not plotted in accord with the field notes of the survey as shown in F.B. 294-113. The field notes have been verified and found to be correct within themselves and have been found consistent with the positions of L.A. Co. Engineer Survey Control System Stations 50L D-9 and 50L E-9C. California Coordinate System Zone 7 Coordinates have been determined as shown.  
 The line of mean high tide as determined in September 1928 and shown in L.B. 428-54 to 59 has been plotted from those field notes and is the line so designated hereon.  
 These corrections have been prepared from the 1928 field observation. They are NOT based on new field work.



COUNTY OF LOS ANGELES DEPARTMENT OF COUNTY ENGINEER  PREPARED BY SURVEY DIVISION RICHARD J. MITCHELL-DIVISION ENGINEER SURVEYED BY C.A. BENSON	REVISION OF PORTION OF C.S.B-307-6  SHOWING <b>LINE OF MEAN HIGH TIDE</b> AS DETERMINED IN 1928	COUNTY SURVEYOR'S MAP NO. <b>B-5403</b> SHEET OF SHEETS FILED: <i>[Signature]</i> 19 28 DEPUTY SURVEYED MAR. 1927 - OCT. 1928 REFERENCE	REVISION NO. BY DATE

C 2 B - 2403