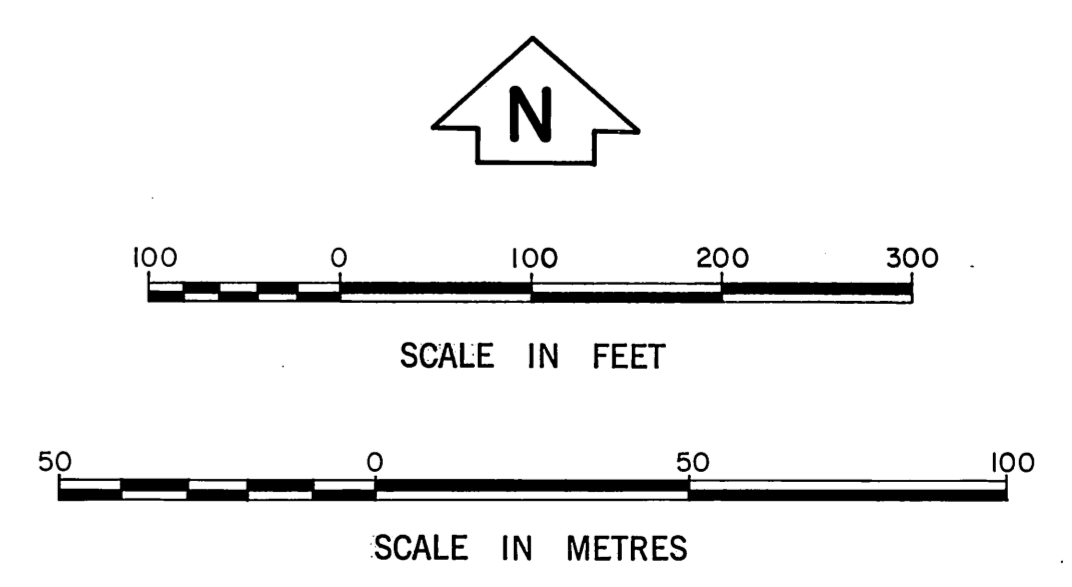
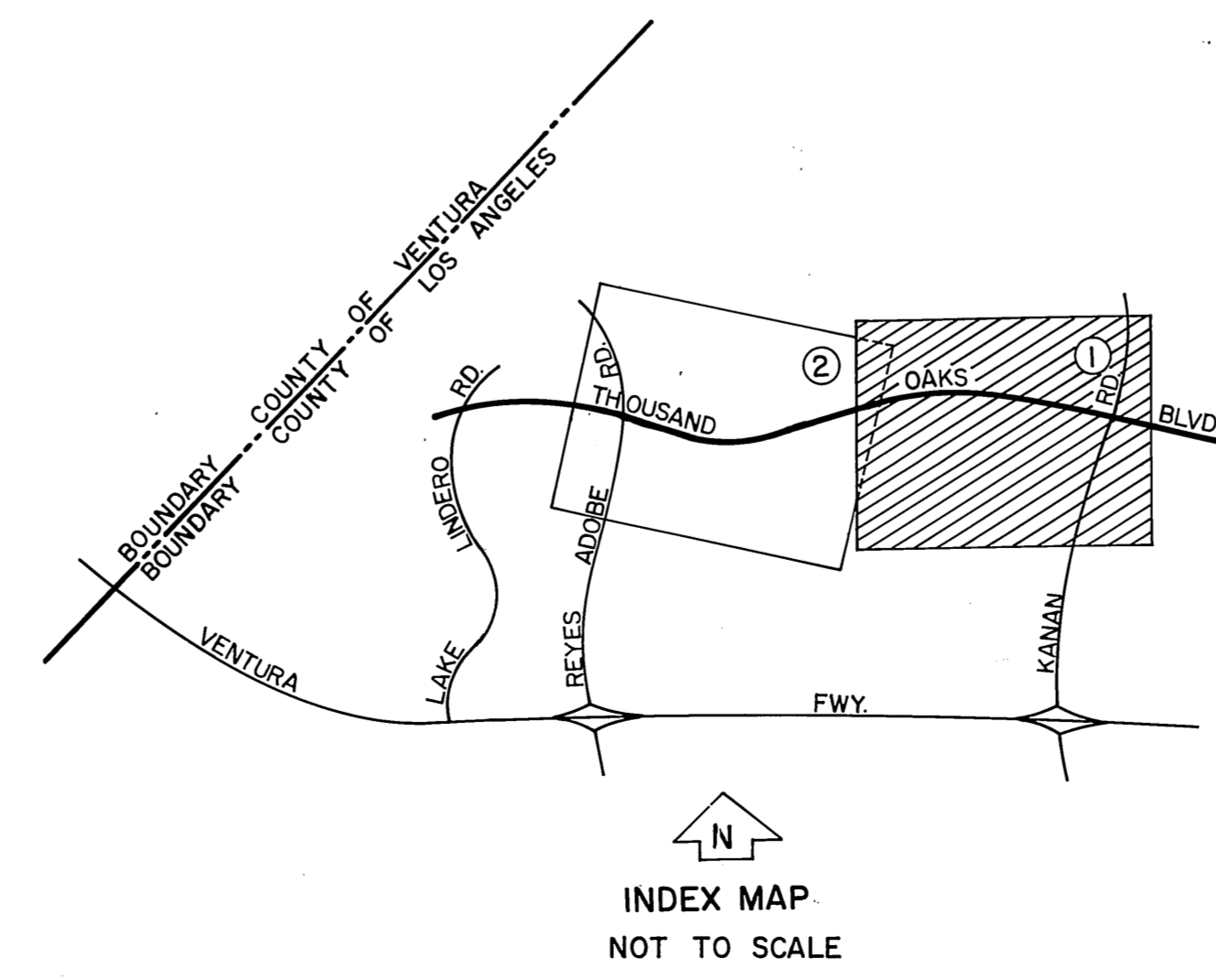


NOTE:
 This map of Thousand Oaks Blvd supersedes C.S.B. 5045 between points A & B as shown above, per I.E.C. minutes dated 1-31-80.



COUNTY OF LOS ANGELES DEPARTMENT OF COUNTY ENGINEER-FACILITIES STEPHEN J. KOONCE-COUNTY ENGINEER PREPARED BY SURVEY DIVISION RICHARD J. MITCHELL-DIVISION ENGINEER SURVEYED BY M. E. WACKER CHECKED BY B. GOINS DRAWN BY S. HAQUE	ALIGNMENT MAP OF THOUSAND OAKS BLVD. FROM KANAN ROAD TO REYES ADOBE ROAD		COUNTY SURVEYOR'S MAP NO. B-5404	REVISION NO. BY DATE
	BASIS OF BEARINGS THE CENTERLINE OF THOUSAND OAKS BLVD. (N 68° 45' 50" W) AS SHOWN ON C.S.B. 5045-1		SHEET 1 OF 2 SHEETS FILED: <i>Richard J. Mitchell</i> 11/19/81 DEPUTY SURVEYED JUNE 1980	
			REFERENCE TRACT NO. 8425, M.B. 965-1-3 TRACT NO. 8426, M.B. 976-04-96 TRACT NO. 1349, M.B. 976-73-94	
			JOB NUMBER 150.0.14 INDEX MAP NO. 159-037, 159-059	



Found 2\" iron pipe, conc. plug & dirt TR. No. 2983 inter 2983 - 219. Spike & nail 01 F.B. 2983 - 222. (East line of parcel of 1.25 acres. See C.S.B. 5045, M.B. 976-84-96. See C.S.B. 5009, F.B. 2983 - 222.)

Found 2\" iron pipe, conc. plug & dirt TR. No. 2983 inter 2983 - 219. Spike & nail 01 F.B. 2983 - 222. (East line of parcel of 1.25 acres. See C.S.B. 5045, M.B. 976-84-96. See C.S.B. 5009, F.B. 2983 - 222.)

Found 2\" iron pipe, conc. plug & dirt TR. No. 2983 inter 2983 - 219. Spike & nail 01 F.B. 2983 - 222. (East line of parcel of 1.25 acres. See C.S.B. 5045, M.B. 976-84-96. See C.S.B. 5009, F.B. 2983 - 222.)

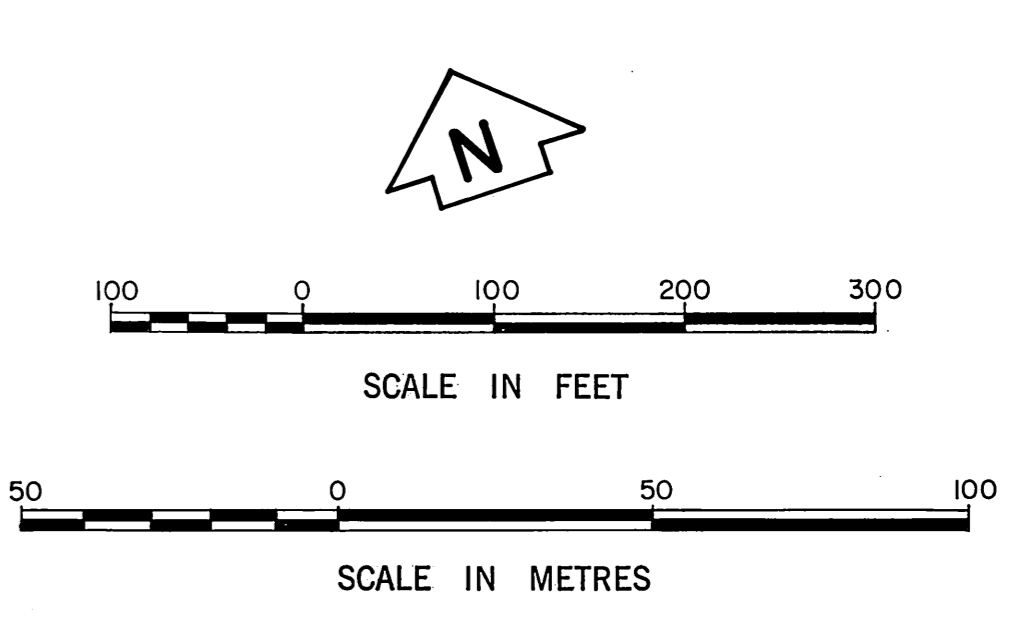
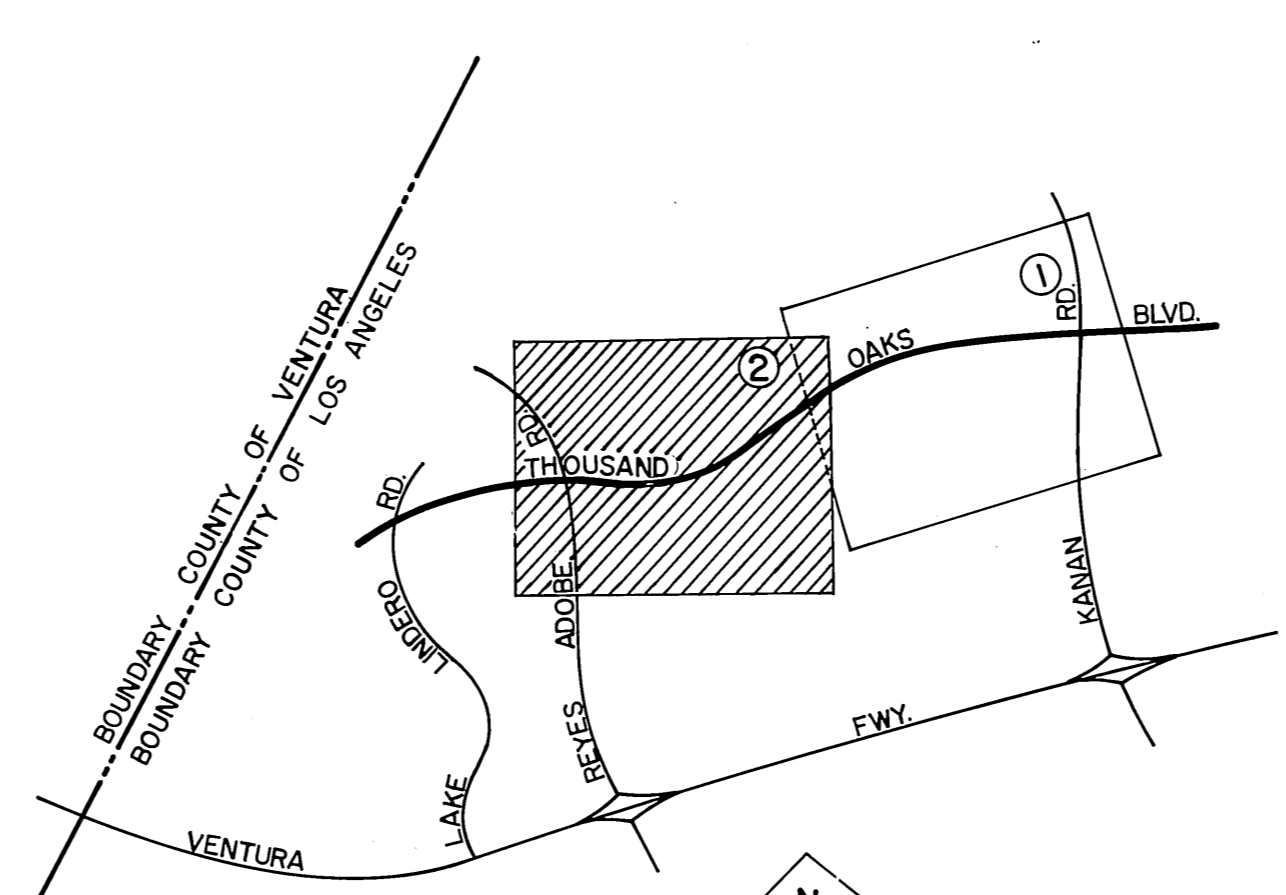
Found 2\" iron pipe, conc. plug & dirt TR. No. 2983 inter 2983 - 219. Spike & nail 01 F.B. 2983 - 222. (East line of parcel of 1.25 acres. See C.S.B. 5045, M.B. 976-84-96. See C.S.B. 5009, F.B. 2983 - 222.)

Found 2\" iron pipe, conc. plug & dirt TR. No. 2983 inter 2983 - 219. Spike & nail 01 F.B. 2983 - 222. (East line of parcel of 1.25 acres. See C.S.B. 5045, M.B. 976-84-96. See C.S.B. 5009, F.B. 2983 - 222.)

Curve Data
 $\Delta = 22^\circ 58' 39''$
 $R = 1500.00$
 $T = 304.87$
 $L = 601.55$

Curve Data
 $\Delta = 22^\circ 54' 59''$
 $R = 1500.00$
 $T = 304.04$
 $L = 599.00$

NOTE:
 This map of Thousand Oaks Blvd supersedes C.S.B. 5045 between points A & B as shown above, per I.E.C. minutes dated 1-31-80.



COUNTY OF LOS ANGELES DEPARTMENT OF COUNTY ENGINEER-FACILITIES STEPHEN J. KOONCE-COUNTY ENGINEER PREPARED BY SURVEY DIVISION RICHARD J. MITCHELL-DIVISION ENGINEER SURVEYED BY M. E. WACKER CHECKED BY B. GOINS DRAWN BY S. HAQUE	ALIGNMENT MAP OF THOUSAND OAKS BLVD. FROM KANAN ROAD TO REYES ADOBE ROAD		COUNTY SURVEYOR'S MAP NO. B-5404 SHEET 2 OF 2 SHEETS FILED: <i>October 12, 1981</i> <i>B. J. Mitchell</i> DEPUTY SURVEYED JUNE 1980	REVISION NO. BY DATE
	BASIS OF BEARINGS THE CENTERLINE OF THOUSAND OAKS BLVD. (N 68°45'50"W) AS SHOWN ON C.S.B. 5045-1			REFERENCE TRACT NO. 3425, M.B. 985-1-3 TRACT NO. 33405, M.B. 976-84-96 TRACT NO. 33406, M.B. 976-84-96 F.B. 2983
	JOB NUMBER 1500.14 INDEX MAP NO. 159-037, 159-059			