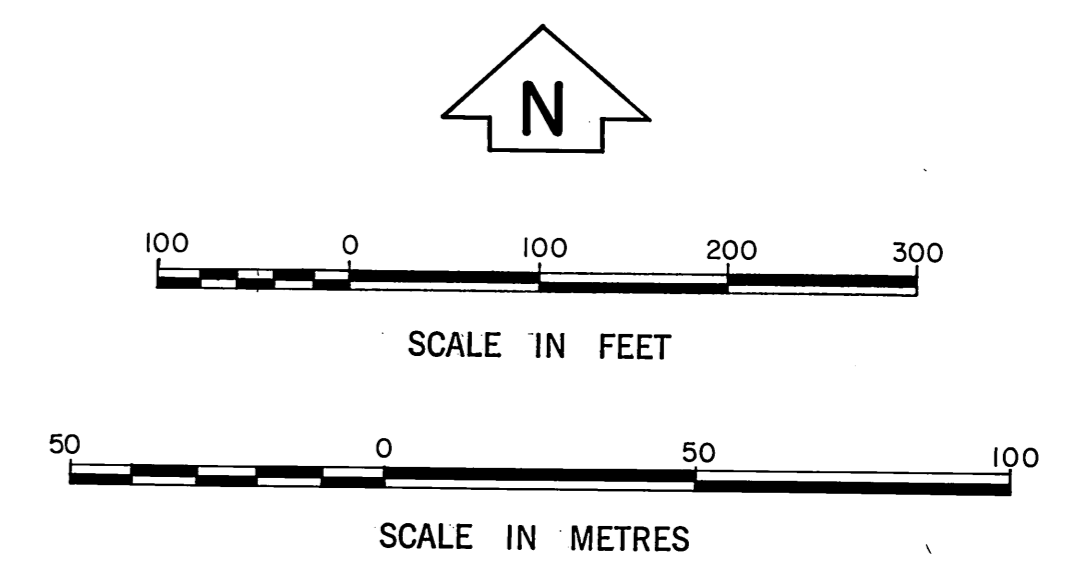
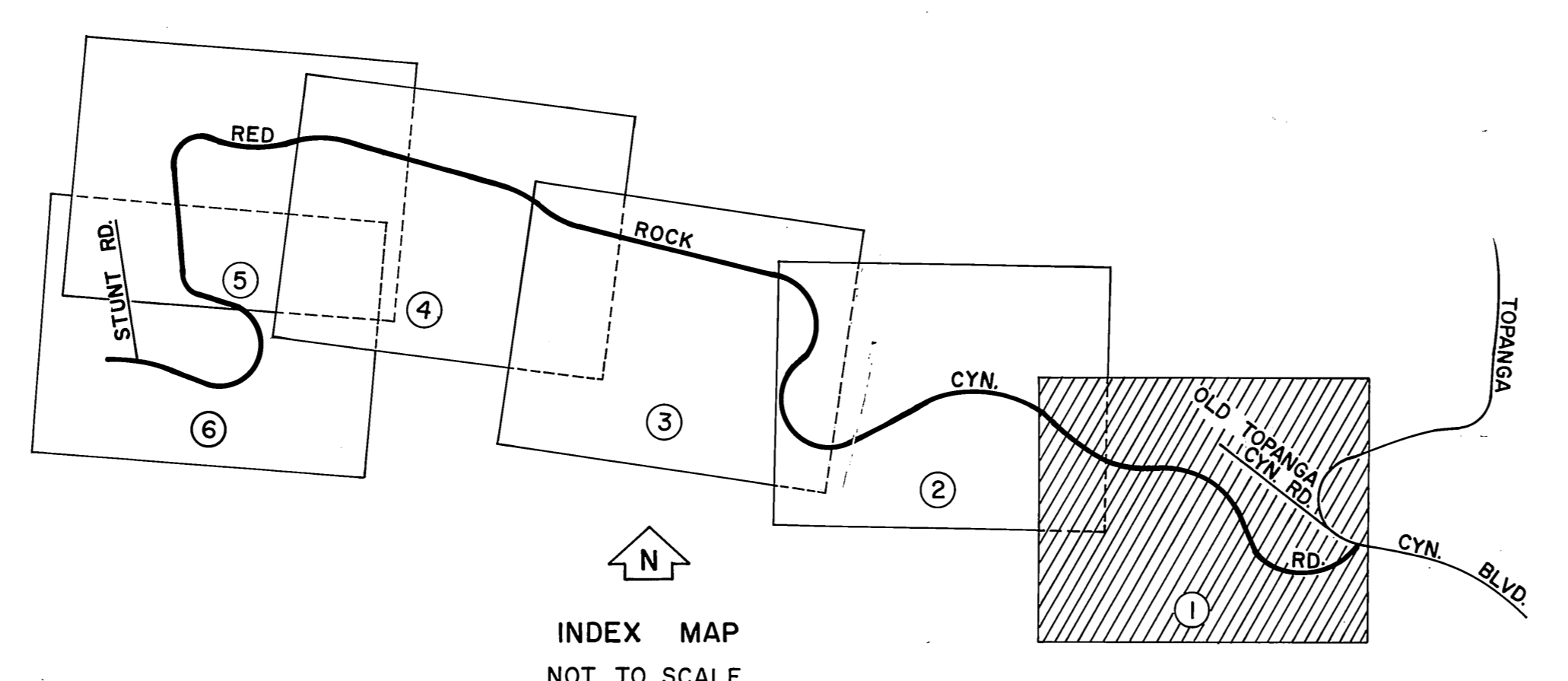
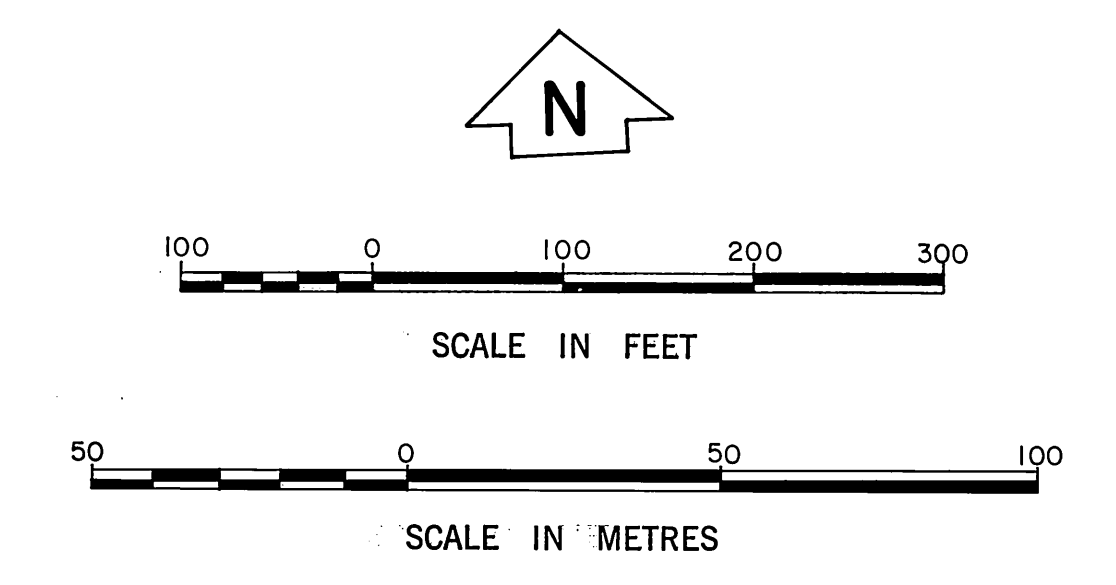
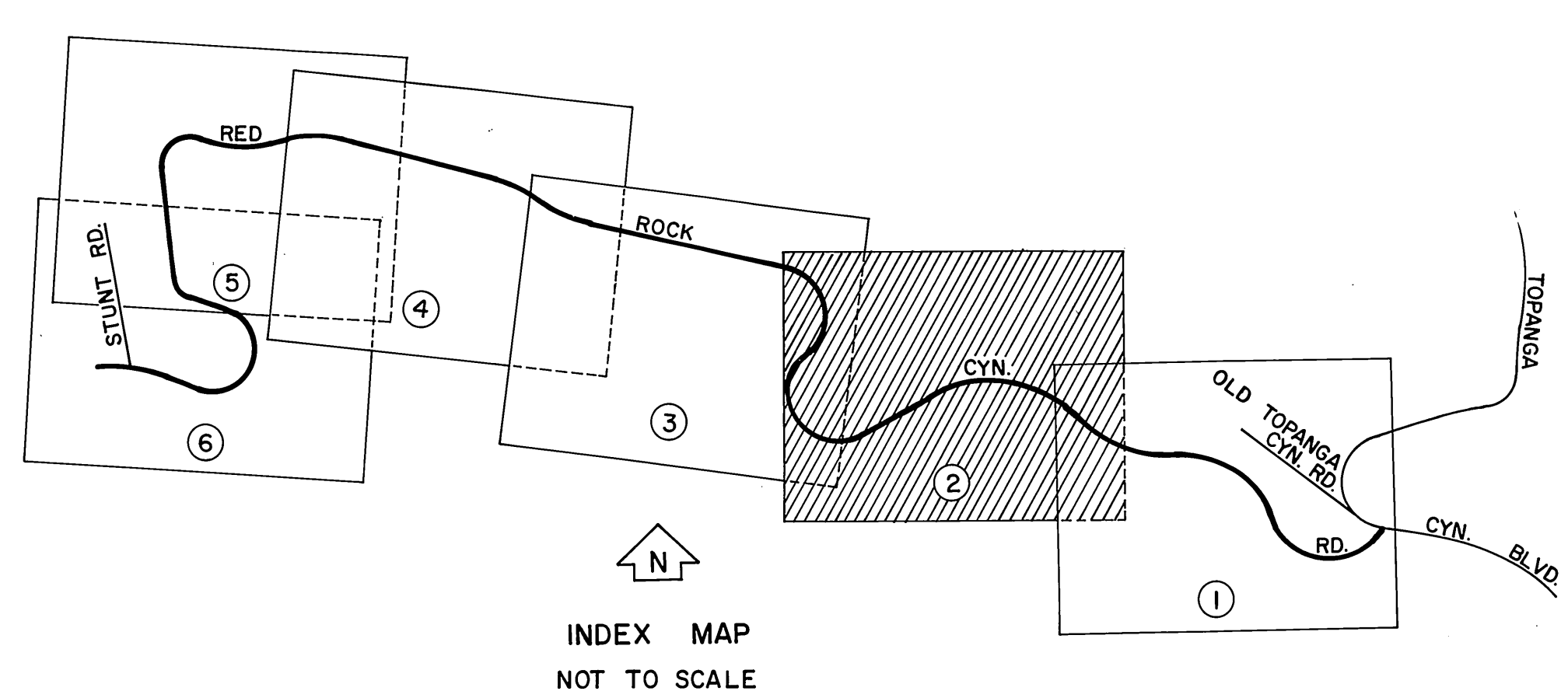
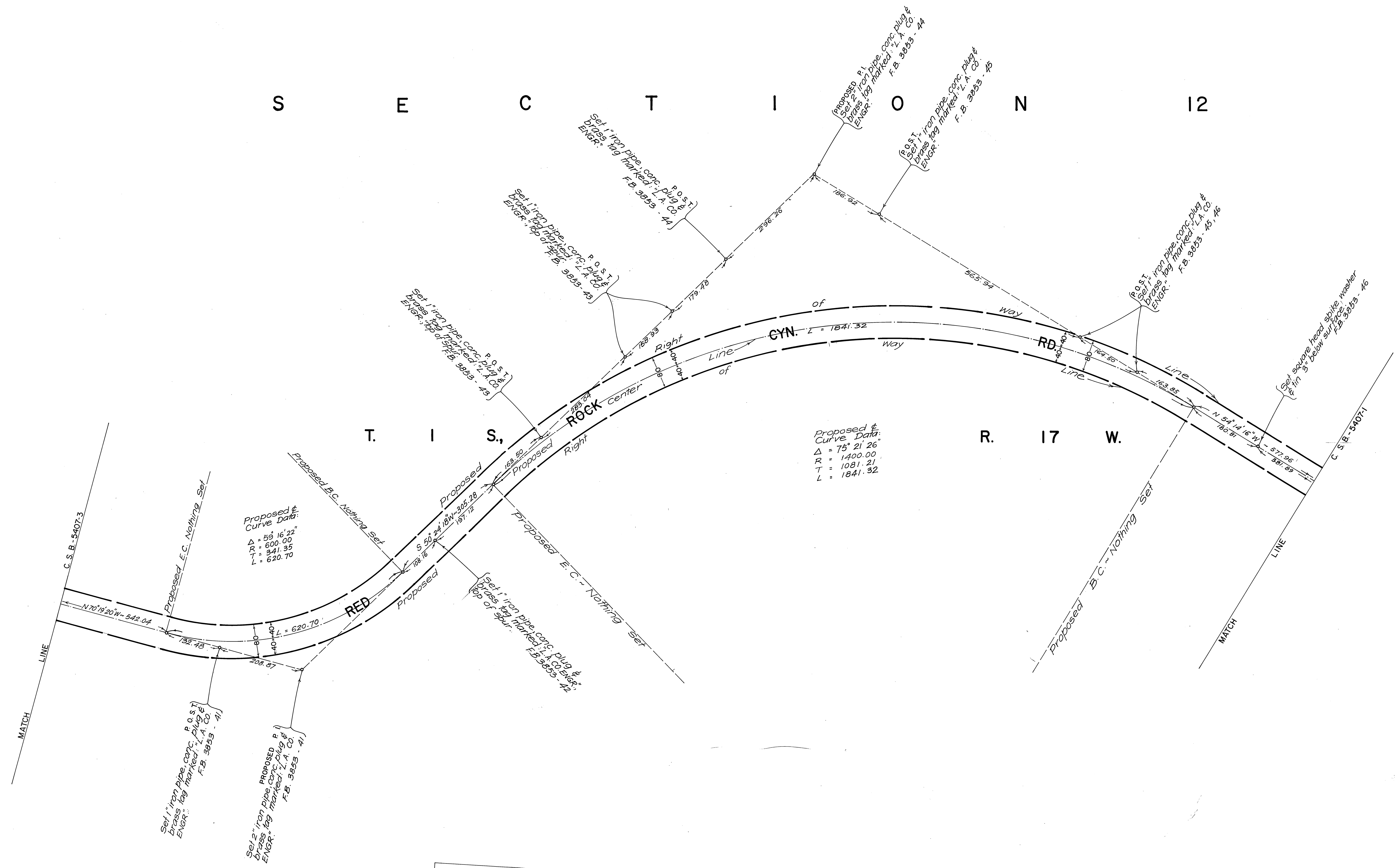


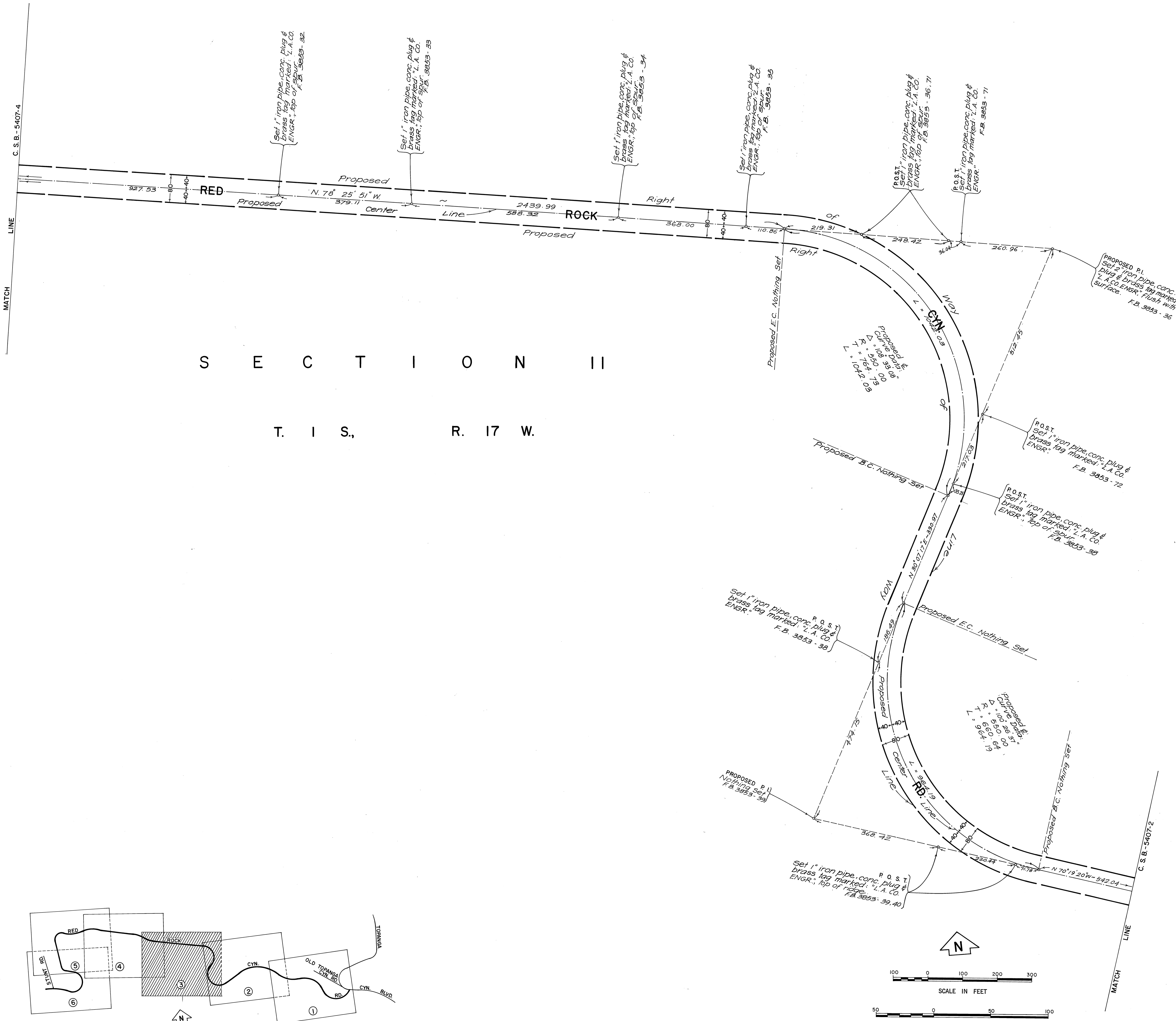
NOTE:
 RED ROCK CANYON ROAD FROM TOPANGA CANYON BLVD. TO STUNT ROAD WAS DELETED FROM THE COUNTY GENERAL PLAN BY ACTION OF THE BOARD OF SUPERVISORS ON NOVEMBER 25, 1980. THIS MAP SHOWS THE LOCATION OF MONUMENTS SET PRIOR TO THAT DATE AND IS FILED IN CONFORMANCE WITH SECTIONS 8762 AND FOLLOWS OF THE CALIFORNIA LAND SURVEYORS ACT.



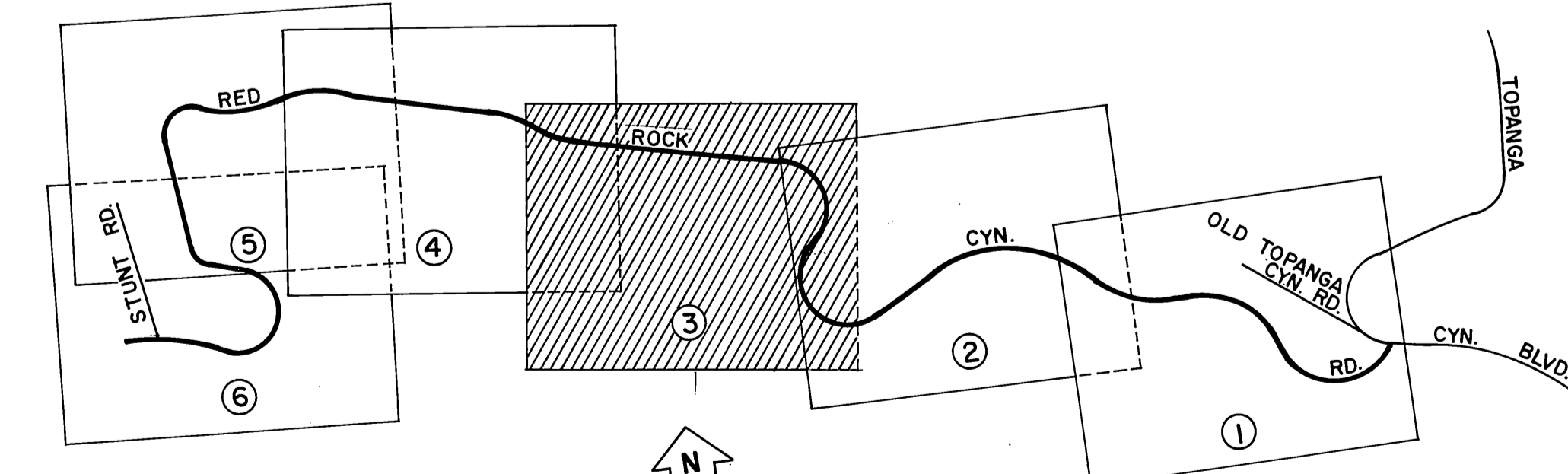
COUNTY OF LOS ANGELES DEPARTMENT OF COUNTY ENGINEER-FACILITIES STEPHEN J. KOONCE-COUNTY ENGINEER PREPARED BY SURVEY DIVISION RICHARD J. MITCHELL ASSISTANT DEPUTY COUNTY ENGINEER SURVEYED BY R. C. DALE CHECKED BY R. HILARIO DRAWN BY S. HAQUE	ALIGNMENT MAP OF RED ROCK CYN. RD. FROM TOPANGA CYN. BLVD. TO STUNT ROAD BASIS OF BEARINGS CALIFORNIA COORDINATE SYSTEM, ZONE 7		COUNTY SURVEYOR'S MAP NO. B-5407 SHEET 1 OF 6 SHEETS FILED: February 1972 DEPUTY SURVEYED MARCH 1971 REFERENCE F.B. 2458, 2661, 3102, 3220, 3283, 3853 JOB NUMBER 0208.21	REVISION NO. BY DATE
			COUNTY SURVEYOR'S MAP NO. B-5407 SHEET 1 OF 6 SHEETS FILED: February 1972 DEPUTY SURVEYED MARCH 1971 REFERENCE F.B. 2458, 2661, 3102, 3220, 3283, 3853 JOB NUMBER 0208.21	REVISION NO. BY DATE
			COUNTY SURVEYOR'S MAP NO. B-5407 SHEET 1 OF 6 SHEETS FILED: February 1972 DEPUTY SURVEYED MARCH 1971 REFERENCE F.B. 2458, 2661, 3102, 3220, 3283, 3853 JOB NUMBER 0208.21	REVISION NO. BY DATE
			COUNTY SURVEYOR'S MAP NO. B-5407 SHEET 1 OF 6 SHEETS FILED: February 1972 DEPUTY SURVEYED MARCH 1971 REFERENCE F.B. 2458, 2661, 3102, 3220, 3283, 3853 JOB NUMBER 0208.21	REVISION NO. BY DATE



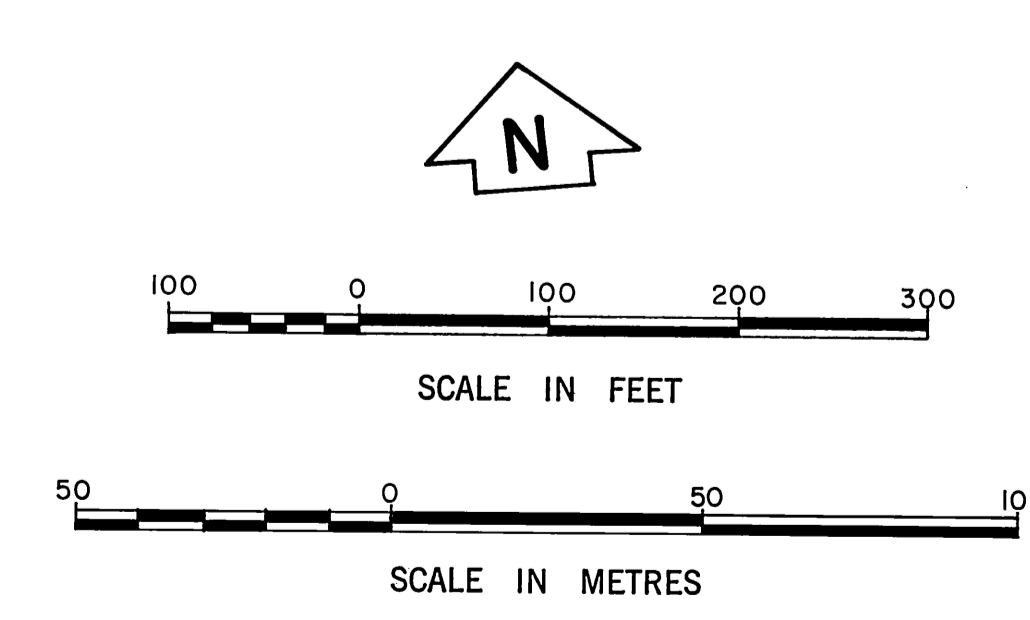
COUNTY OF LOS ANGELES DEPARTMENT OF COUNTY ENGINEER-FACILITIES STEPHEN J. KOONCE-COUNTY ENGINEER PREPARED BY SURVEY DIVISION RICHARD J. MITCHELL ASSISTANT DEPUTY COUNTY ENGINEER SURVEYED BY R.C. DALE CHECKED BY R. HILARIO DRAWN BY S. HAQUE	ALIGNMENT MAP OF RED ROCK CYN. RD. FROM TOPANGA CYN. BLVD. TO STUNT ROAD BASIS OF BEARINGS CALIFORNIA COORDINATE SYSTEM, ZONE 7		COUNTY SURVEYOR'S MAP NO. B-5407 SHEET 2 OF 6 SHEETS FILED: <i>Richard J. Mitchell</i> DEPUTY SURVEYED MARCH 1971 REFERENCE F.B. 2450, 2661, 3102, 3220, 3283, 3853 JOB NUMBER 0208.21 INDEX MAP NO. 144-077, 144-097	REVISION NO. BY DATE



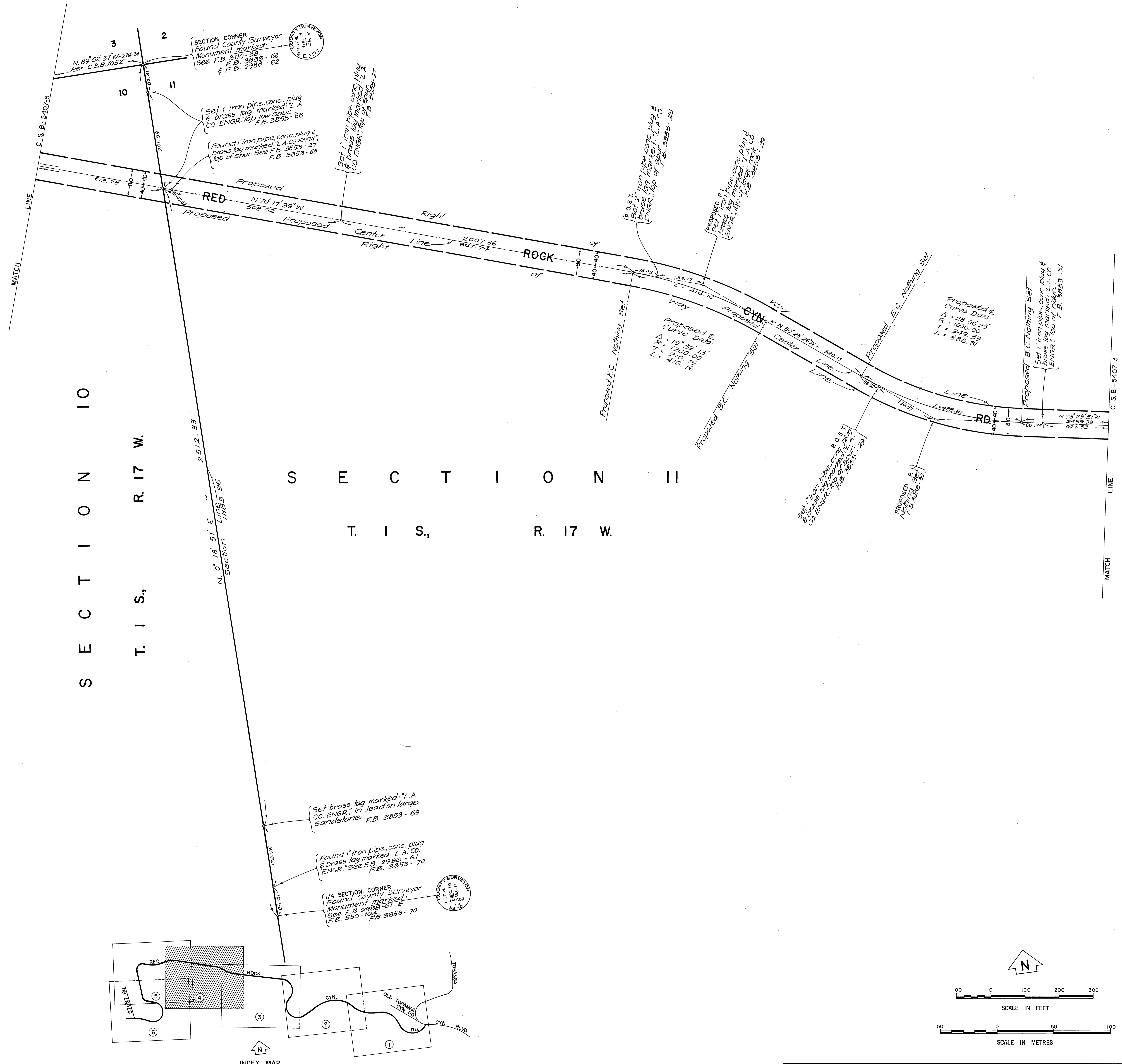
S E C T I O N I I
T. I S., R. 17 W.



INDEX MAP
NOT TO SCALE

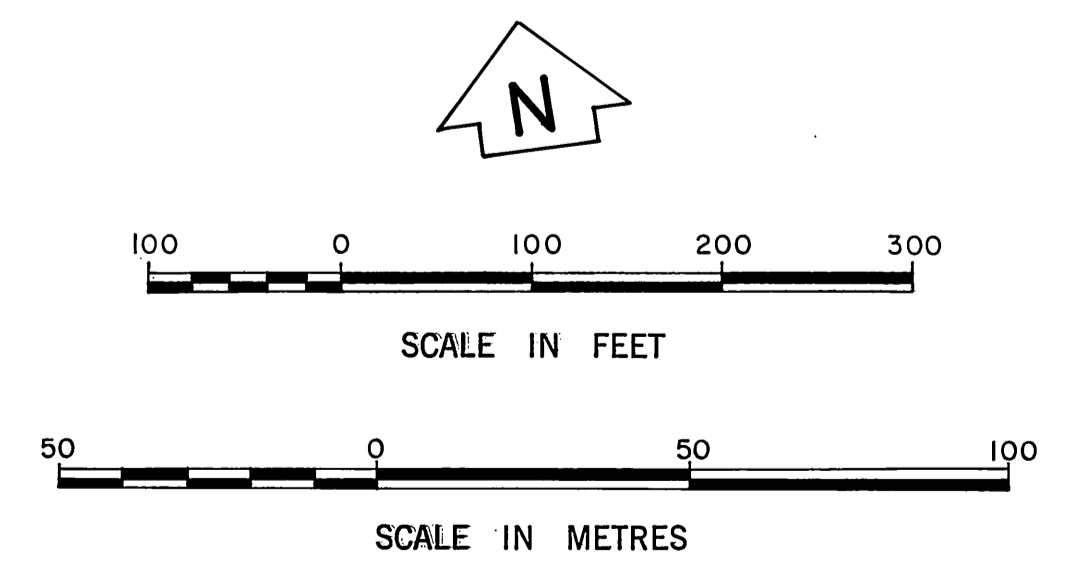
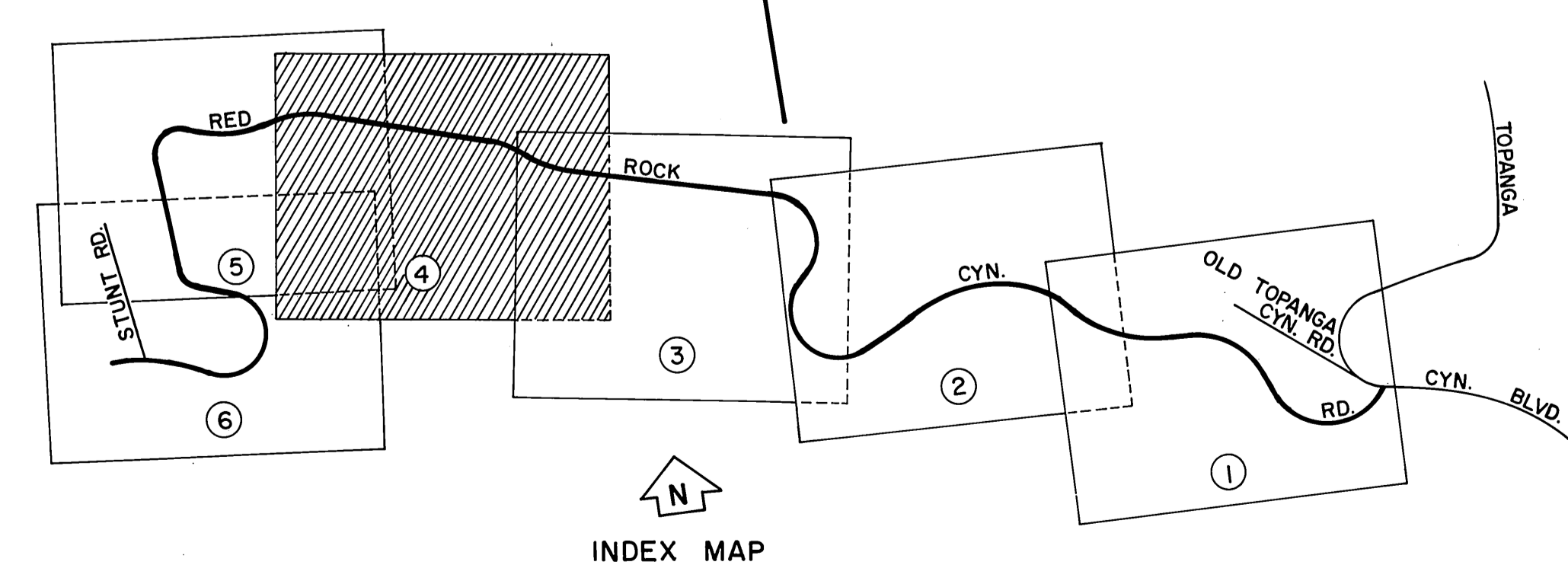


COUNTY OF LOS ANGELES DEPARTMENT OF COUNTY ENGINEER-FACILITIES STEPHEN J. KOONCE-COUNTY ENGINEER PREPARED BY SURVEY DIVISION RICHARD J. MITCHELL ASSISTANT DEPUTY COUNTY ENGINEER SURVEYED BY R. C. DALE CHECKED BY R. HILARIO DRAWN BY S. HAQUE	ALIGNMENT MAP OF RED ROCK CYN. RD. FROM TOPANGA CYN. BLVD. TO STUNT ROAD BASIS OF BEARINGS CALIFORNIA COORDINATE SYSTEM, ZONE 7		COUNTY SURVEYOR'S MAP NO. B-5407 SHEET 3 OF 6 SHEETS FILED: February 27, 1982 DEPUTY SURVEYED MARCH 1971 REFERENCE F.B. 2458, 2661, 3102, 3220, 3283, 3853 JOB NUMBER 0208.21 INDEX MAP NO. 144.077, 144.097	REVISION NO. BY DATE



SECTION I
T. 1 S., R. 17 W.

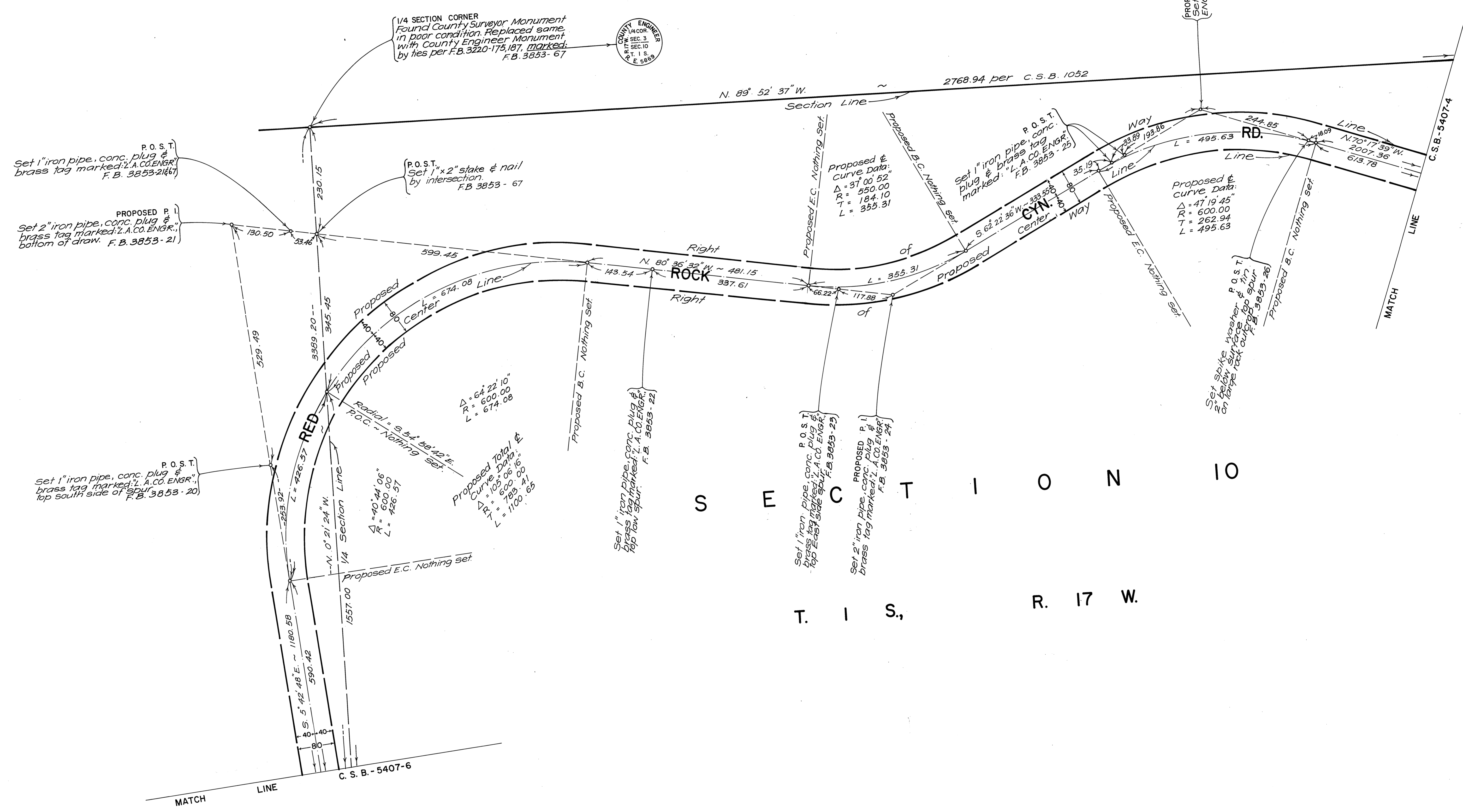
SECTION II
T. 1 S., R. 17 W.



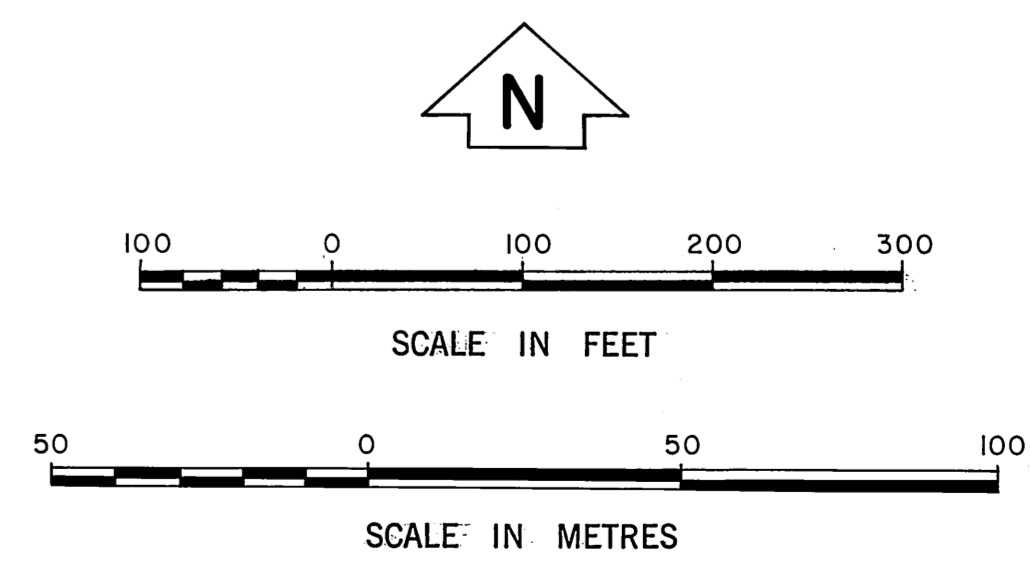
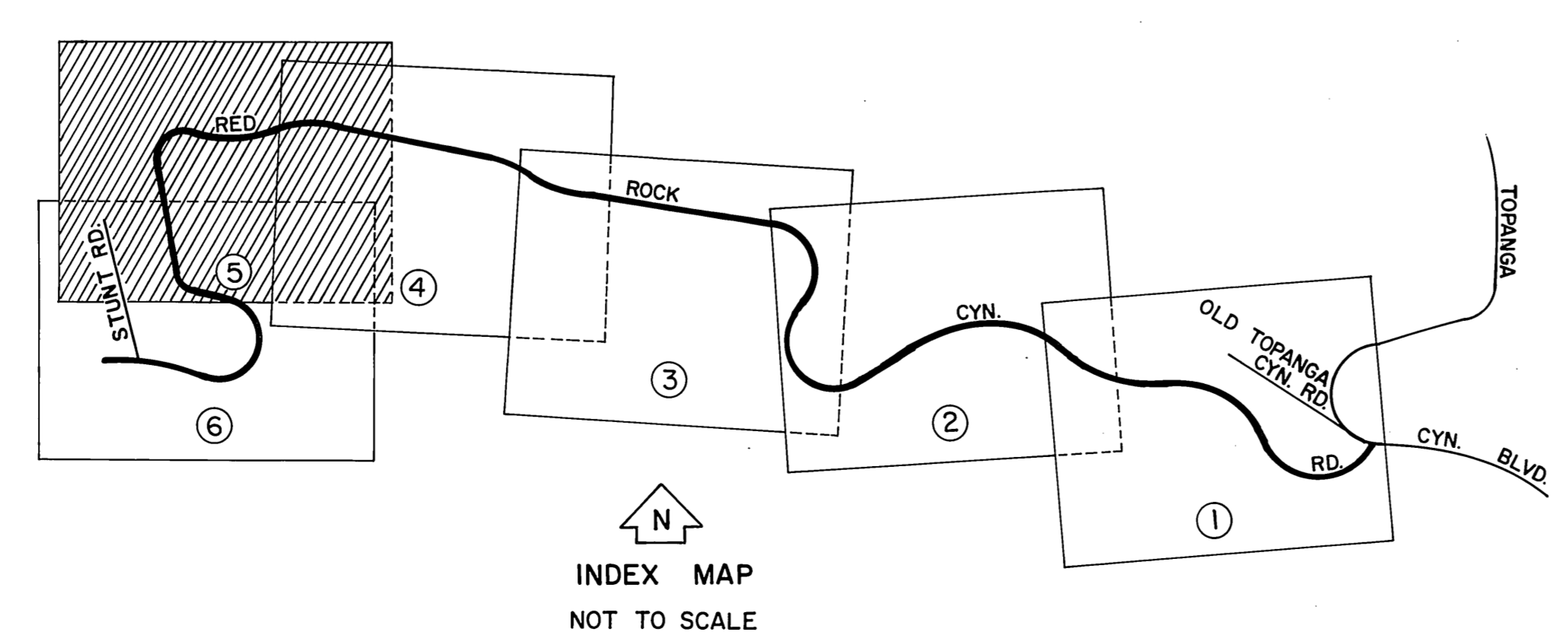
COUNTY OF LOS ANGELES DEPARTMENT OF COUNTY ENGINEER-FACILITIES STEPHEN J. MOONCE-COUNTY ENGINEER PREPARED BY SURVEY DIVISION RICHARD J. MITCHELL, ASSISTANT DEPUTY COUNTY ENGINEER SURVEYED BY R. C. DALE CHECKED BY R. HILLARIO DRAWN BY S. HAQUE	ALIGNMENT MAP OF RED ROCK CYN. RD. FROM TOPANGA CYN. BLVD. TO STUNT ROAD BASIS OF BEARINGS CALIFORNIA COORDINATE SYSTEM, ZONE 7	COUNTY SURVEYOR'S MAP NO. B-5407 SHEET 4 OF 6 SHEETS FILED: February 21, 1982 <i>R. J. Mitchell</i> DEPUTY SURVEYED MARCH 1971 REFERENCE F. B. 2456, 2461, 3102, 3220, 3283, 3853 JOB NUMBER 0208.21 INDEX MAP NO. 144-077, 144-097	REVISION <table border="1" style="width: 100%; border-collapse: collapse;"> <tr> <th style="font-size: 8px;">NO.</th> <th style="font-size: 8px;">BY</th> <th style="font-size: 8px;">DATE</th> </tr> <tr> <td> </td> <td> </td> <td> </td> </tr> </table>	NO.	BY	DATE			
	NO.	BY	DATE						

C2B-2401-B23

S E C T I O N 3
T I S, R. 17 W.

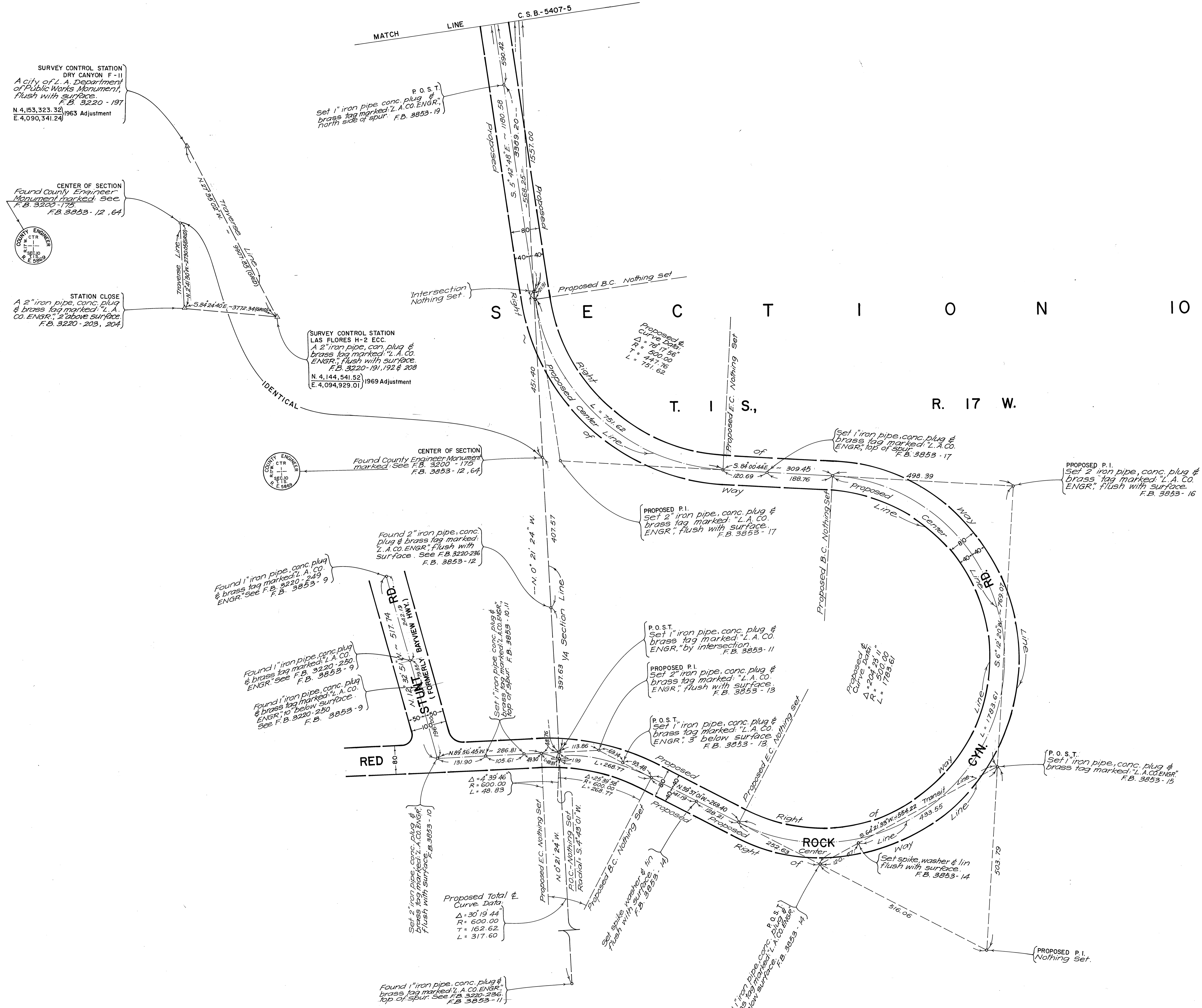


S E C T I O N 10
T I S, R. 17 W.



COUNTY OF LOS ANGELES DEPARTMENT OF COUNTY ENGINEER-FACILITIES STEPHEN J. KOONCE-COUNTY ENGINEER PREPARED BY SURVEY DIVISION RICHARD J. MITCHELL ASSISTANT DEPUTY COUNTY ENGINEER SURVEYED BY R. C. DALE CHECKED BY R. HILARIO DRAWN BY S. HAQUE	ALIGNMENT MAP OF RED ROCK CYN. RD. FROM TOPANGA CYN. BLVD. TO STUNT ROAD BASIS OF BEARINGS CALIFORNIA COORDINATE SYSTEM, ZONE 7		COUNTY SURVEYOR'S MAP NO. B-5407 SHEET 5 OF 6 SHEETS FILED: February 2, 1977 DEPUTY SURVEYED: MARCH 1971 REFERENCE F.B. 2458, 2651, 3102, 3220, 3283, 3853 JOB NUMBER 0208.21 INDEX MAP NO. 144-077,144-097	REVISION NO. BY DATE

C2B-2401-B23



SURVEY CONTROL STATION
 DRY CANYON F-11
 A City of L.A. Department
 of Public Works Monument,
 flush with surface.
 F.B. 3220-197
 N. 4,153,323.32
 E. 4,090,341.24
 1963 Adjustment

CENTER OF SECTION
 Found County Engineer
 Monument marked. See
 F.B. 3200-175
 F.B. 3853-12, 64

STATION CLOSE
 A 2" iron pipe, conc. plug
 & brass tag marked "L.A.
 Co. ENGR." 2' above surface.
 F.B. 3220-203, 204

SURVEY CONTROL STATION
 LAS FLORES H-2 ECC.
 A 2" iron pipe, conc. plug &
 brass tag marked "L.A. Co.
 ENGR." flush with surface.
 F.B. 3220-191, 192 & 208
 N. 4,144,541.52
 E. 4,094,929.01
 1969 Adjustment

CENTER OF SECTION
 Found County Engineer Monument
 marked. See F.B. 3200-175
 F.B. 3853-12, 64

Found 2" iron pipe, conc. plug
 & brass tag marked:
 "L.A. CO. ENGR." flush with
 surface. See F.B. 3220-236
 F.B. 3853-12

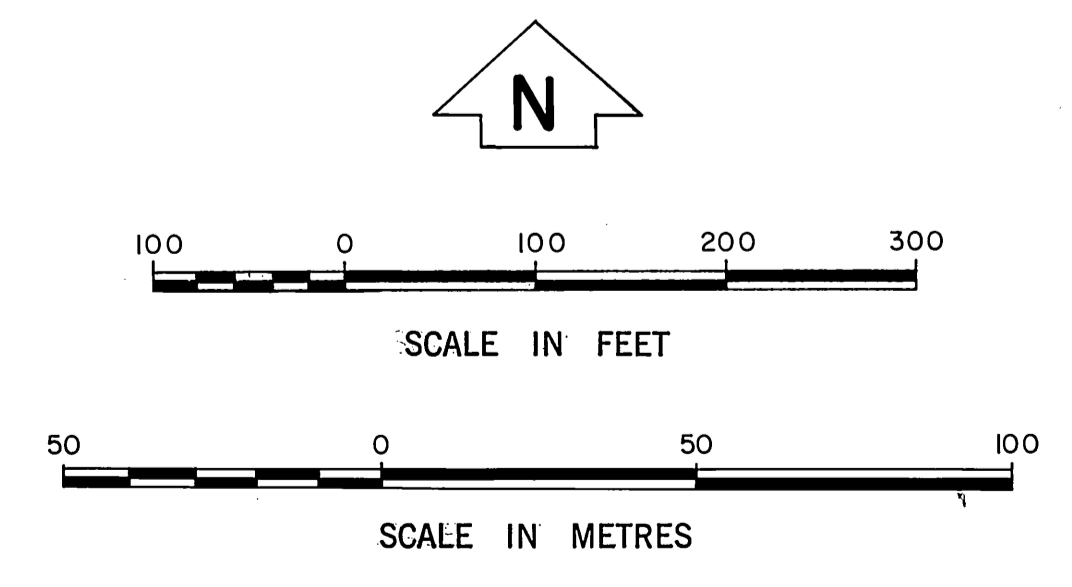
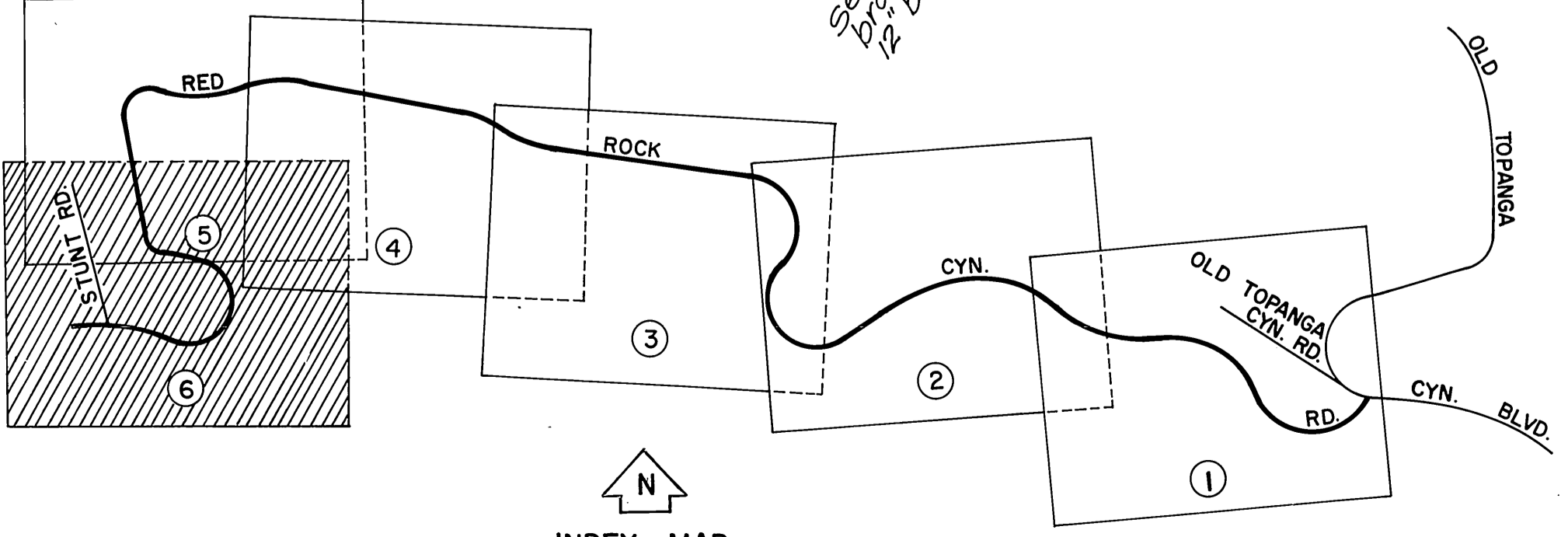
Found 1" iron pipe, conc. plug
 & brass tag marked "L.A. CO.
 ENGR." See F.B. 3853-9

Found 1" iron pipe, conc. plug
 & brass tag marked "L.A. CO.
 ENGR." See F.B. 3853-9

Found 1" iron pipe, conc. plug
 & brass tag marked "L.A. CO.
 ENGR." 10' below surface.
 See F.B. 3220-250
 F.B. 3853-9

Set 2" iron pipe, conc. plug &
 brass tag marked "L.A. CO. ENGR."
 flush with surface. F.B. 3853-10

Found 1" iron pipe, conc. plug &
 brass tag marked "L.A. CO. ENGR."
 top of spur. See F.B. 3220-236
 F.B. 3853-11



COUNTY OF LOS ANGELES DEPARTMENT OF COUNTY ENGINEER-FACILITIES STEPHEN J. KOONCE-COUNTY ENGINEER PREPARED BY SURVEY DIVISION RICHARD J. MITCHELL ASSISTANT DEPUTY COUNTY ENGINEER SURVEYED BY R. C. DALE CHECKED BY R. HILARIO DRAWN BY S. HAQUE	ALIGNMENT MAP OF RED ROCK CYN. RD. FROM TOPANGA CYN. BLVD. TO STUNT ROAD BASIS OF BEARINGS CALIFORNIA COORDINATE SYSTEM, ZONE 7		COUNTY SURVEYOR'S MAP NO. B-5407 SHEET 6 OF 6 SHEETS FILED: February 3, 1982 <i>R. J. Mitchell</i> SURVEYED MARCH 1971 REFERENCE F.B. 2458, 2561, 3102, 3220, 3293, 3853 JOB NUMBER 0208.21 INDEX MAP NO. 144-077, 144-097	REVISION NO. BY DATE