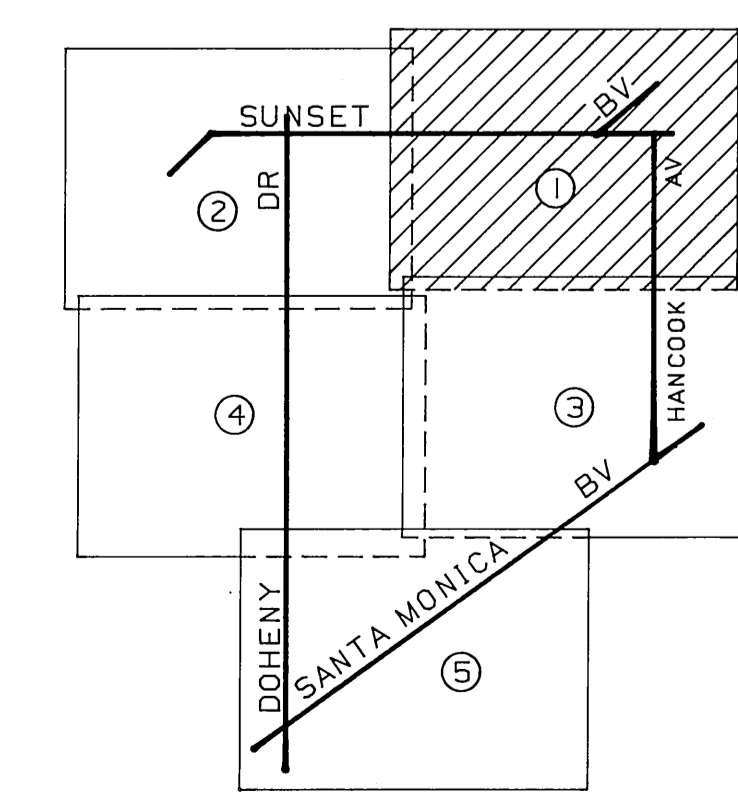


- 1 FOUND LEAD AND TACK. SEE F.B.311-6,7,100, RD. DEPT. F.B. F.A.170-240, L.A. CITY F.B.17705-47 F.B.2710-101
- 2 FOUND LEAD AND TACK. SEE F.B.311-6,7,100, RD. DEPT. F.B. F.A.170-240, L.A. CITY F.B.17705-47 F.B.2710-101
- 3 FOUND LEAD AND TACK. SEE RD. DEPT. F.B.453-7, F.B.311-6,99, RD. DEPT. F.B. F.A.170-234, F.B.2720-43 F.B.2710-100
- 4 FOUND LEAD AND TACK. SEE RD. DEPT. F.B.453-7, F.B.311-99, RD. DEPT. F.B. F.A.170-234, F.B.2720-43 F.B.2710-100
- 5 FOUND LEAD AND TACK. SEE C.S.B-150, F.B.1817-7, F.B.2720-42 F.B.2710-38
- 6 FOUND LEAD AND TACK. SEE C.S.B-150, F.B.1817-7, F.B.2720-42 F.B.2710-38
- 7 FOUND LEAD AND TACK. SEE F.B.1817-7 F.B.2710-108
- 8 FOUND LEAD AND TACK 0.02" NORTH OF LINE. RESET ON LINE. SEE F.B.1817-8 F.B.2710-108
- 9 FOUND BOAT SPIKE AND TIN. SEE F.B.1817-8 F.B.2710-108
- 10 FOUND SPIKE AND WASHER. SEE F.B.1817-8, RD. DEPT. F.B.F.A.170-6, RD. DEPT. F.B.F.X.351-2, C.S.B.-150 F.B.2710-14,23,108
- 11 ANGLE POINT SET BOAT SPIKE, WASHER AND TIN BY TIES PER RD. DEPT. F.B. F.A.170-6 F.B.2710-28
- 12 FOUND SPIKE 2" BELOW SURFACE. SEE RD. DEPT. F.B.F.A.170-5, C.S.B.-150 F.B.2710-24
- 13 E.C. NOTHING SET.
- 14 P.I. NOTHING SET. ESTABLISHED 108.53' SOUTH OF SUNSET BLVD. PER C.S.B. 3016
- 15 B.C. NOTHING SET.
- 16 E.C. NOTHING SET.
- 17 P.I. NOTHING SET. ESTABLISHED 291.92' SOUTH OF SUNSET BLVD. PER C.S.B. 3016
- 18 B.C. NOTHING SET.
- 19 FOUND LEAD AND TACK ON WESTERLY PROD OF CENTER-LINE. SEE F.B.2710-32 F.B.2710-172
- 20 SET TEMPORARY MARK AT INTERSECTION, SET 4 TANGENT PUNCH MARKS ON SEWER MANHOLE RIM. F.B.2710-172
- 21 FOUND SPIKE, WASHER AND TIN. SEE RD. DEPT. F.B. F.X.351-2 F.B.2710-13,20
- 22 FOUND NAIL. SEE RD. DEPT. F.B.F.A.170-155, RD. DEPT. F.B.433-6. REPLACED SAME WITH BOAT SPIKE WASHER AND TIN. F.B.2710-98
- 23 SET BOAT SPIKE, WASHER AND TIN AT INTERSECTION, CENTERLINE PROLONGATION, HILDALE AVE. FROM SO. F.B.2710-98
- 24 FOUND BOAT SPIKE, WASHER AND TIN, FLUSH WITH SURFACE. SEE RD. DEPT. F.B.453-6 F.B.2710-99
- 25 SET A TEMPORARY MARK ON MANHOLE COVER AT INTERSECTION OF 4 TANGENT BOAT SPIKE TIES. PER F.B. 1498-106 F.B.2710-26
- 26 FOUND CHISELED CROSS ON TOP OF WALL. NO REFERENCE, FITS STREET IMPROVEMENTS TO SOUTH, SET BRASS TAG MARKED "L.A. CO. ENGR." OVER SAME. F.B.2710-127
- 27 FOUND BRASS TAG MARKED "L.A. CO. ENGR." FITS EQUAL DISTANCE BETWEEN CURB FACES TO EAST, SEE F.B.2710-371 F.B.2710-171
- 28 SET COUNTY ENGINEER MONUMENT IN HANDHOLE AT INTERSECTION. F.B.2710-171
- 29 FOUND BRASS TAG MARKED "L.A. CO. ENGR." IN CONC. GUTTER 0.53' FROM CURB FACE (FITS EQUAL DISTANCES BETWEEN CURB FACES TO WEST. SEE F.B.2710-371) F.B.2710-171

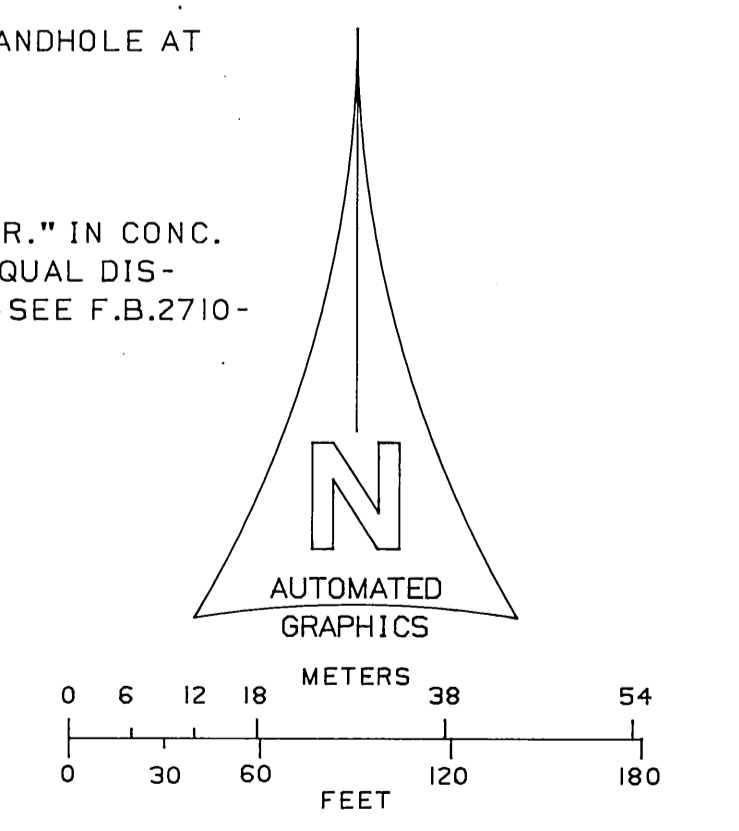
MATCH LINE C.S.B-5418-2

MATCH LINE C.S.B-5418-3

CURVE DATA				
NO.	Δ	R	T	L
1	6°03'07"	800.00	42.29	84.50
2	6°03'07"	800.00	42.29	84.50



NOTE : SCALE
 THIS MAP WAS PLOTTED FROM EXISTING DATA BASE. CERTAIN DIMENSIONS SHOWN HEREON MAY NOT SCALE EXACTLY. IN INTERPRETING THE DATA SHOWN, DIMENSIONS SHOULD BE HELD PRECEDENT OVER SCALE IN ALL CASES.

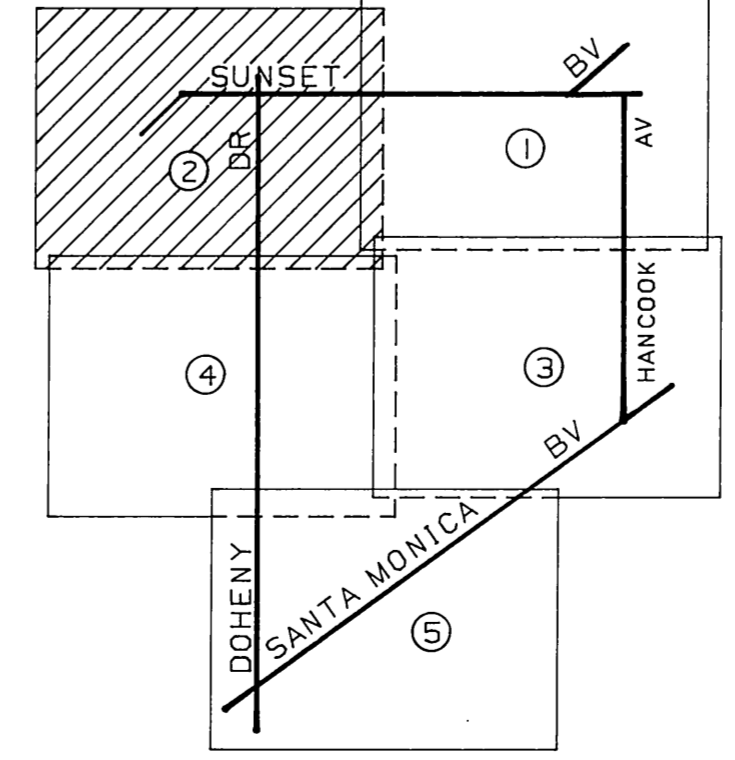


COUNTY OF LOS ANGELES DEPARTMENT OF COUNTY ENGINEER-FACILITIES STEPHEN J. KOONCE-COUNTY ENGINEER PREPARED BY SURVEY DIVISION RICHARD J. MITCHELL ASSISTANT DEPUTY COUNTY ENGINEER SURVEYED BY - A. S. HELLSTRUM CHECKED BY - R. H. LARIC DRAWN BY - E. FONG	ALIGNMENT MAP OF STREETS IN A PORTION OF WEST HOLLYWOOD & SHERMAN SEWER MAINTENANCE DISTRICT	COUNTY SURVEYOR'S MAP NO B-5418 SHEET 1 OF 5 SHEETS FILED: <i>Richard J. Mitchell</i> , 1962 DEPUTY SURVEYED MARCH 1961 - JUNE 1962 REFERENCE F.B.2701 F.B.3218 JOB NUMBER 0222.37 INDEX MAP NO 22	REVISION NO BY DATE	
	BASIS OF BEARINGS CALIFORNIA COORDINATE SYSTEM, ZONE 7			

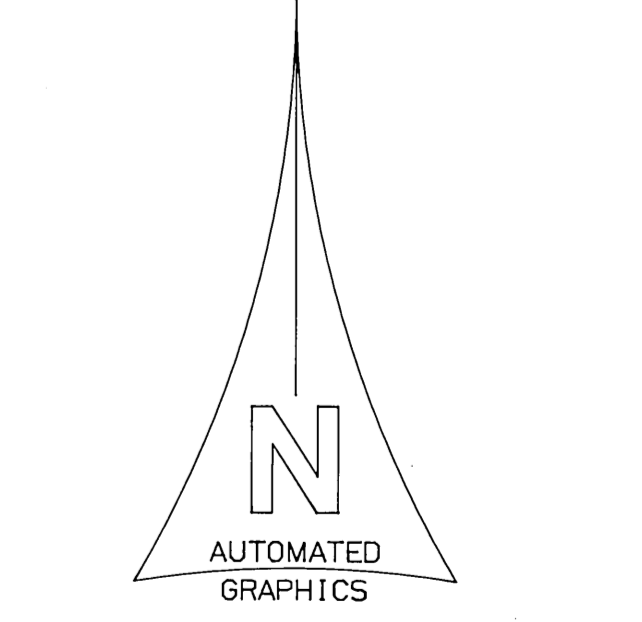


- 30 P.I. FOUND LEAD AND TACK. SEE F.B.311-10,44,45. F.B.2710-53
- 31 P.O.S.T. FOUND LEAD AND TACK. SEE F.B.311-10,44,45, RD. DEPT. F.B.F.A.170-245 F.B.2710-53
- 32 B.C. NOTHING SET.
- 33 SET TEMPORARY MARK ON MANHOLE COVER AT INTERSECTION OF 4 CHISELLED CROSSES ON SEWER MANHOLE RIM. SEE F.B.2625-87, C.S.B.-150 F.B.2710-54
- 34 FOUND LEAD AND TACK IN LIEU OF SPIKE, WASHER AND TIN SEE F.B.311-41, FITS TIES PER SAID F.B. F.B.2710-54
- 35 FOUND LEAD AND TACK. SEE F.B.311-41,F.B. 2625-85, C.S.B.-150, RD. DEPT. F.B.F.A.170-244 F.B.2710-57
- 36 ANGLE POINT FOUND PUNCH MARK ON MANHOLE COVER AT INTERSECTION OF 4 TANGENT PUNCH MARKS ON SEWER MANHOLE RIM PER F.B.2625-81 F.B.2710-49
- 37 FOUND LEAD AND TACK. SEE F.B.2625-84 F.B.2710-96
- 38 ANGLE POINT FOUND LEAD AND TACK SEE F.B.311-7,100, RD. DEPT. F.B.F.A.170-241, L.A. CITY F.B.17705-47 F.B.2710-95
- 39 E.C. NOTHING SET.
- 40 P.O.C. NOTHING SET.
- 41 FOUND LEAD AND TACK. SEE F.B. 306-3,7, F.B.311-46, F.B.2625-35, F.M.18146 F.B.2710-52
- 42 FOUND LEAD AND TACK SEE R.S.78-27, USED FOR CENTERLINE CONTROL. F.B.2710-55
- 43 SET LEAD AND BRASS TAG MARKED "L.A. CO. ENGR." IN CONC. RAMP, CENTERLINE ESTABLISHED AT EQUAL DISTANCES BETWEEN CURB FACES. F.B.2710-94
- 44 FOUND CONCRETE NAIL. SEE F.B.2710-93 F.B.2710-170
- 45 SET COUNTY ENGINEER MONUMENT IN HANDHOLE AT INTERSECTION. F.B.2710-170
- 46 SET COUNTY ENGINEER MONUMENT IN HANDHOLE AT INTERSECTION. F.B.2710-166
- 47 FOUND LEAD AND TACK ON CENTERLINE PROD FROM EAST. SEE RD. DEPT. F.B. 453-6 F.B.2710-92
- 48 SET COUNTY ENGINEER MONUMENT IN HANDHOLE AT INTERSECTION. F.B.2710-170
- 49 SET COUNTY ENGINEER MONUMENT IN HANDHOLE AT INTERSECTION. ESTABLISHED CENTERLINE OF CAROL DR. 33 FT. FROM FOUND LEAD AND TACK ALONG WEST LINE OF RIGHT OF WAY. PER F.B.2710-50-56 F.B.2710-167
- 50 SET COUNTY ENGINEER MONUMENT IN HANDHOLE AT RECORD DISTANCE (206.43 FT.) WESTERLY ALONG PHYLLIS AVE. FROM DOHENY DR. PER SERENITY HEIGHTS TRACT, M.B.20-199 F.B.2710-168
- 51 FOUND COUNTY ENGINEER MONUMENT IN HANDHOLE. SEE F.B.2625-78, C.S.8973 F.B.2710-48
- 52 FOUND INTERSECTION OF PUNCH MARKS ON MANHOLE RIM. SEE RD. DEPT. F.B.F.A.163-2, F.B.2625-79 F.B.2710-90
- 53 FOUND SPIKE AND WASHER 1" BELOW SURFACE. SEE F.B.2625-80, F.B.2710-91 F.B.2710-169
- 54 ESTABLISHED AT RECORD DISTANCE 122.51 FT. EASTERLY FROM FOUND SPIKE AND WASHER PER C.S.8973 F.B.2710-169
- 55 ANGLE POINT FOUND COUNTY ENGINEER MONUMENT IN HANDHOLE. SEE F.B.2625-37 F.B.2710-47

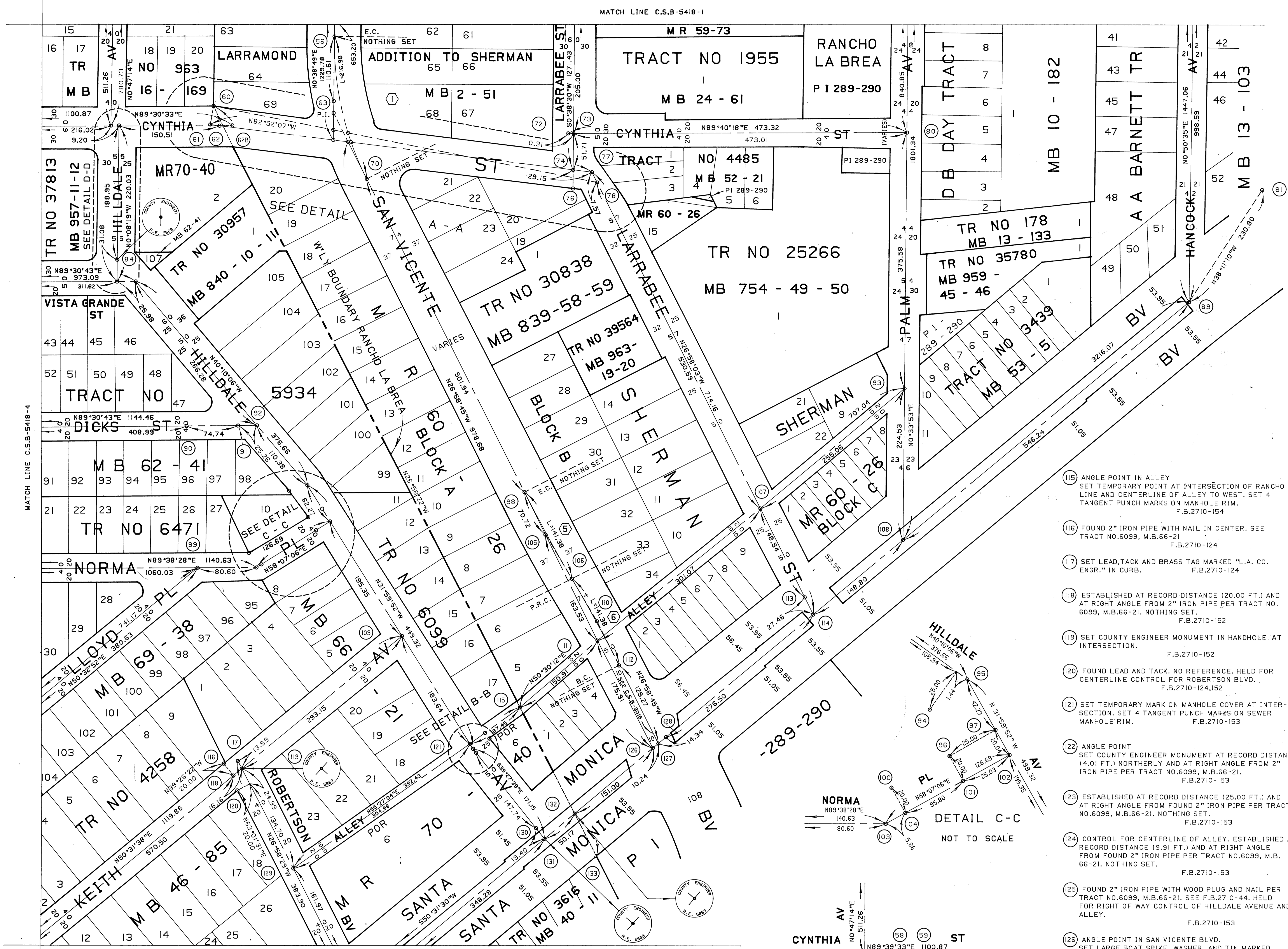
CURVE DATA				
NO	Δ	R	T	L
1	36°43'21"	550.42	182.69	352.78
2	18°39'28"	550.24		179.24
3	18°03'53"	550.42		173.54



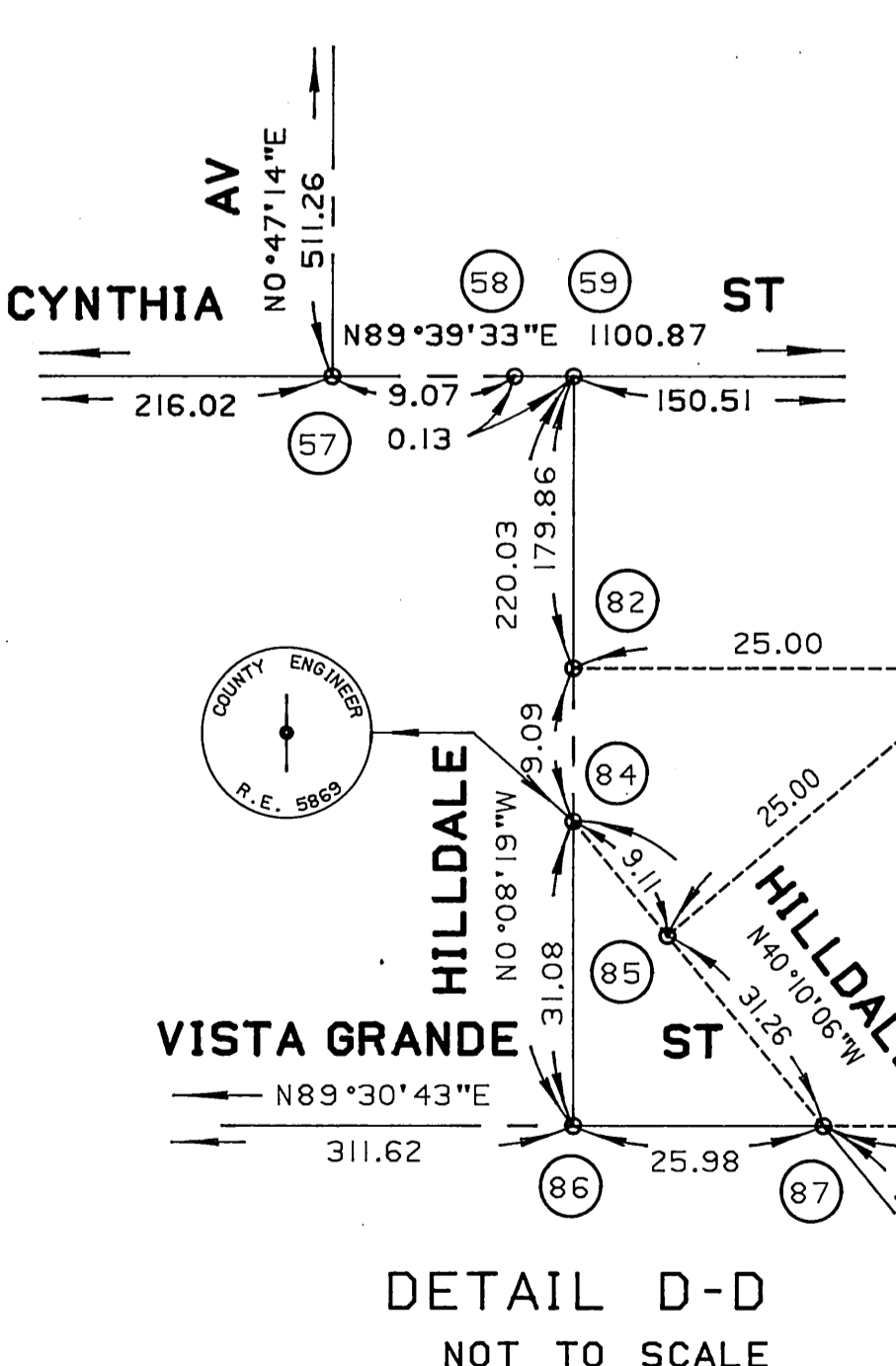
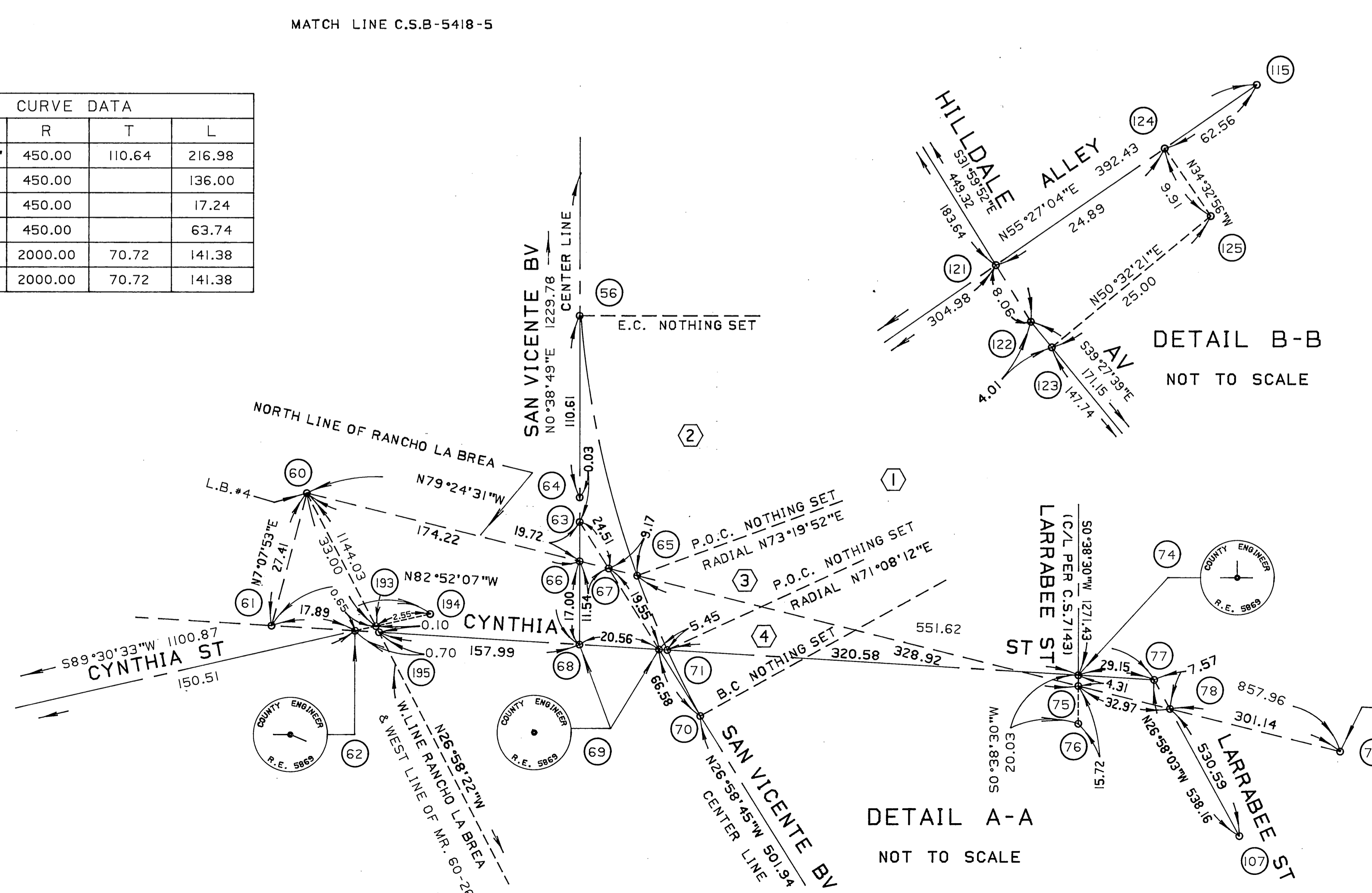
NOTE : SCALE
 THIS MAP WAS PLOTTED FROM EXISTING DATA BASE. CERTAIN DIMENSIONS SHOWN HEREON MAY NOT SCALE EXACTLY. IN INTERPRETING THE DATA SHOWN, DIMENSIONS SHOULD BE HELD PRECEDENT OVER SCALE IN ALL CASES.



COUNTY OF LOS ANGELES DEPARTMENT OF COUNTY ENGINEER-FACILITIES STEPHEN J. KOONCE-COUNTY ENGINEER PREPARED BY SURVEY DIVISION RICHARD J. MITCHELL ASSISTANT DEPUTY COUNTY ENGINEER SURVEYED BY - B.H. HELLSROM CHECKED BY - B. PHILARIO DRAWN BY - E. FONG	ALIGNMENT MAP OF STREETS IN A PORTION OF WEST HOLLYWOOD & SHERMAN SEWER MAINTENANCE DISTRICT		COUNTY SURVEYOR'S MAP NO B-5418 SHEET 2 OF 5 SHEETS FILED: <i>March 17, 1962</i> DEPUTY SURVEYED MARCH 1961 - JUNE 1962 REFERENCE F.B.2701 F.B.3218 JOB NUMBER 0222.37 INDEX MAP NO 22	REVISION NO BY DATE
	BASIS OF BEARINGS CALIFORNIA COORDINATE SYSTEM, ZONE 7			

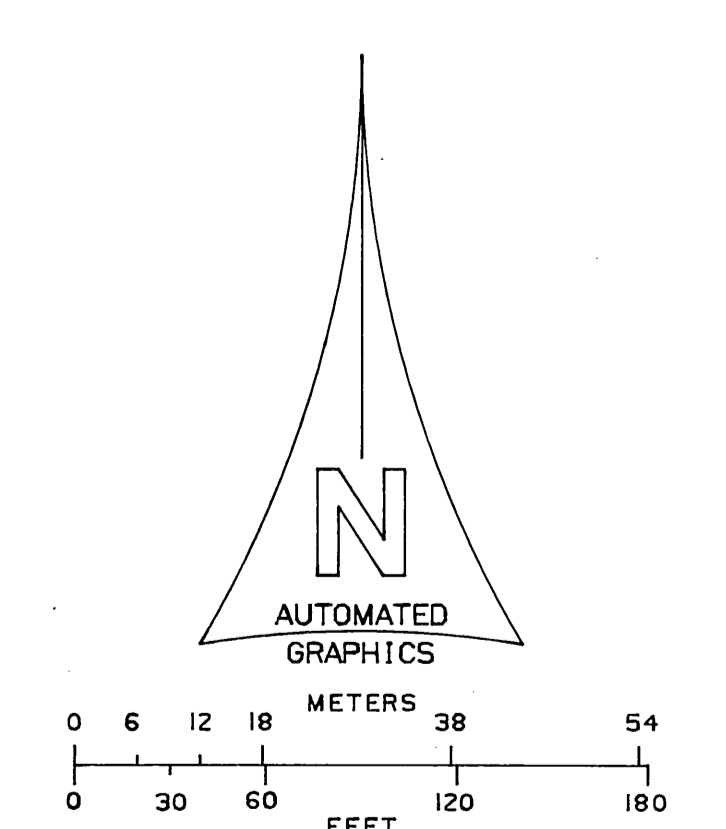


NO	Δ	R	T	L
1	27°37'34"	450.00	110.64	216.98
2	17°18'57"	450.00	136.00	136.00
3	2°11'40"	450.00	17.24	17.24
4	8°06'57"	450.00	63.74	63.74
5	4°03'01"	2000.00	70.72	141.38
6	4°03'01"	2000.00	70.72	141.38

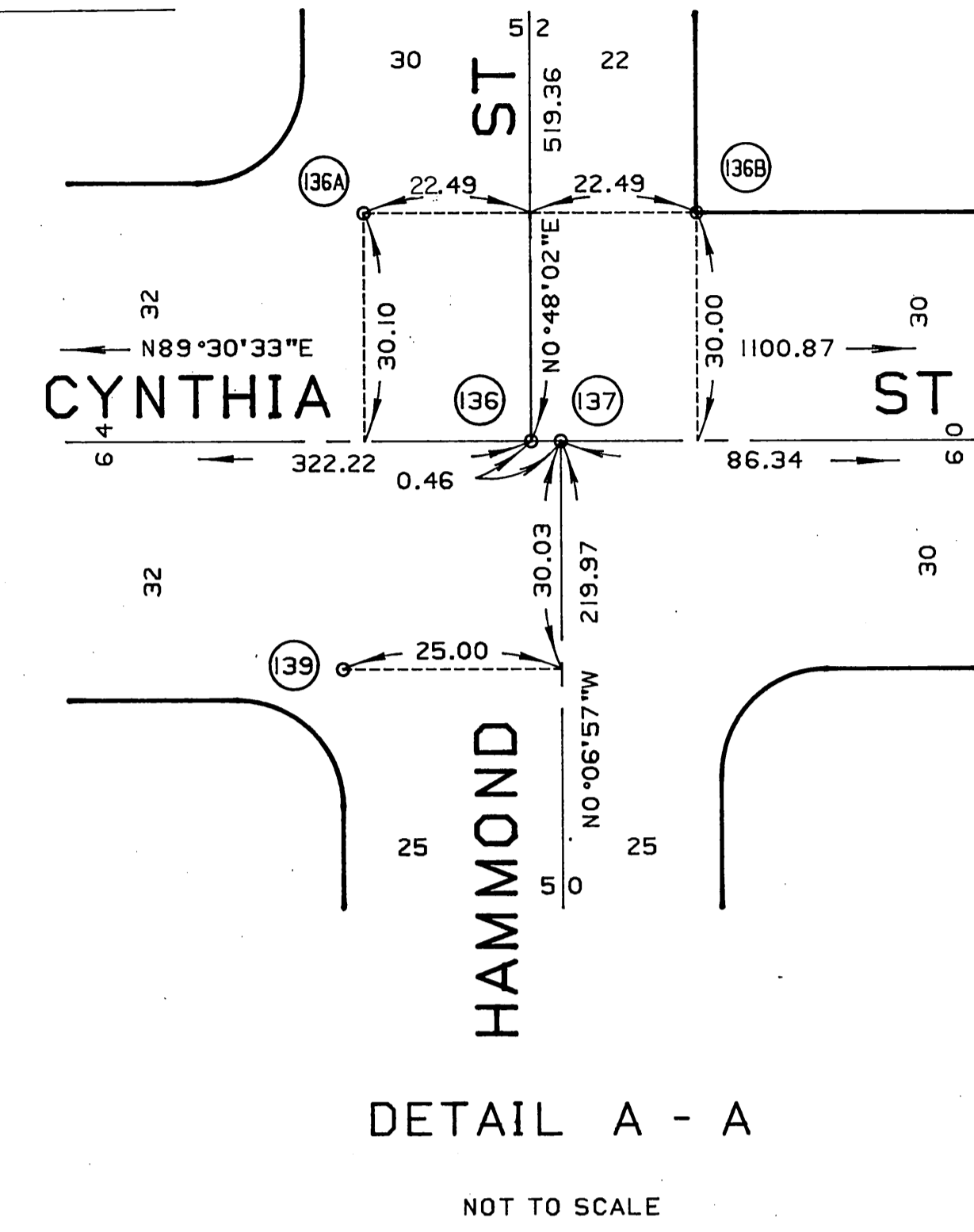
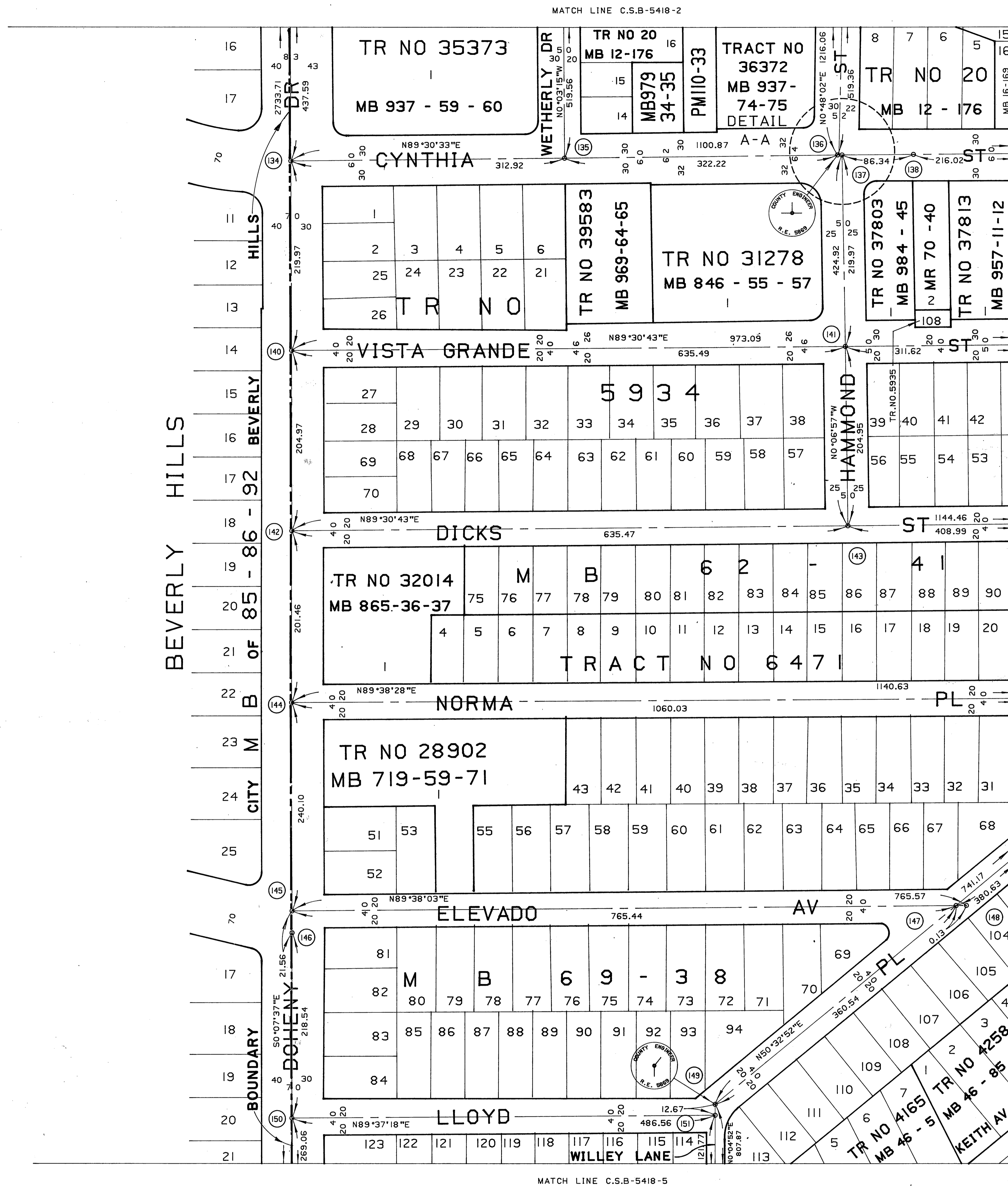


NOTE: SCALE
THIS MAP WAS PLOTTED FROM EXISTING DATA BASE. CERTAIN DIMENSIONS SHOWN HEREON MAY NOT SCALE EXACTLY. IN INTERPRETING THE DATA SHOWN DIMENSIONS SHOULD BE HELD PRECEDENT OVER SCALE IN ALL CASES.

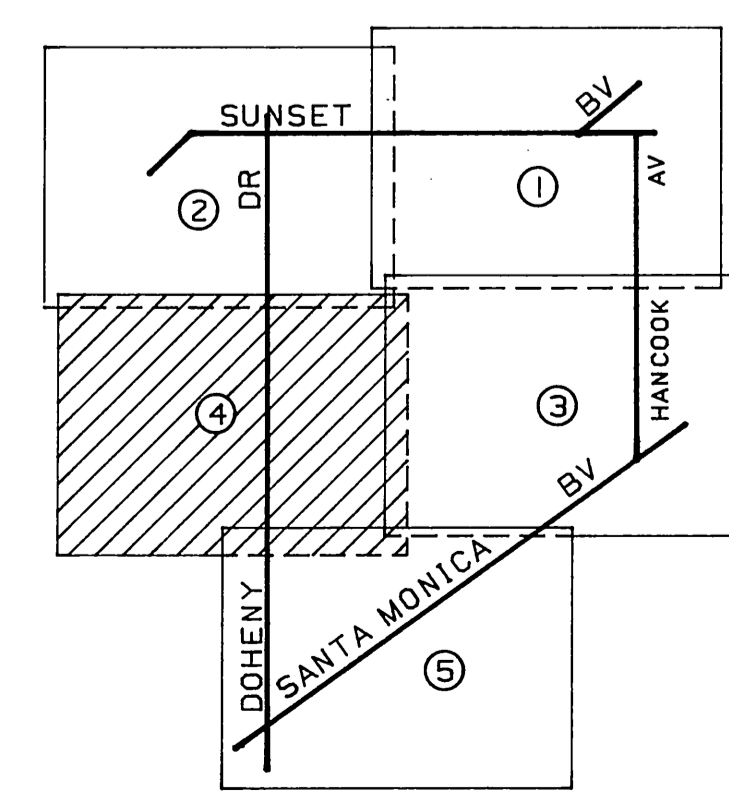
- 84 SET BOAT SPIKE, WASHER, AND TIN AT INTERSECTION, PER F.B.2710-43, REPLACED SAME WITH COUNTY ENGINEER MONUMENT. F.B.2710-160
- 85 SET SQUARE HEAD SPIKE ON CENTERLINE PROD OF HILLDALE AVE. AT RECORD DISTANCE 125.00 FT. SOUTH-WESTERLY OF FOUND 2" IRON PIPE. PER TRACT NO. 5934, M.B. 62-41. F.B.2710-160
- 86 SET LEAD, TACK & TAG MARKED "L.A. CO. ENGINEER" AT INTERSECTION. F.B.2710-160
- 87 ESTABLISHED AT INTERSECTION NOTHING SET. F.B.2710-43,160
- 88 CENTERLINE CONTROL (VISTA GRANDE ST. TO WEST) ESTABLISHED AT RECORD DISTANCE 140.00 FT. FROM FOUND 2" IRON PIPE TO NORTH PER TRACT NO. 5934, M.B. 62-41. NOTHING SET. F.B.2710-160
- 89 SET COUNTY ENGINEER MONUMENT IN HANDHOLE AT CALCULATED DISTANCE AND ANGLE FROM S.E. CORNER LOT 54, A.A. BARNETT TRACT, M.B.13-103 PER WEST KNOLL TRACT, M.B.50-58, TRACT NO.4912, M.B.53-36. F.B.3218-32
- 90 FOUND SQUARE HEAD SPIKE. SEE F.B.2625-75. F.B.2710-88
- 91 SET LEAD, TACK & TAG MARKED "L.A. CO. ENGINEER." F.B.2710-88
- 92 SET TEMPORARY POINT ON MANHOLE COVER AT INTERSECTION OF 4 TANGENT PUNCH MARKS ON SEWER MANHOLE RIM PER F.B.2625-75. F.B.2710-88
- 93 SET COUNTY ENGINEER MONUMENT IN HANDHOLE AT INTERSECTION. F.B.2710-157
- 94 FOUND 2"x2" STAKE AND TAG MARKED "L.S.1023" FLUSH WITH SURFACE. HELD AS CONTROL FOR SOUTHERLY R/W OF HILLDALE AVE. PER TRACT NO.5934, M.B.62-41. F.B.2710-116
- 95 SET BOAT SPIKE, WASHER, AND TIN AT INTERSECTION. F.B.2710-116
- 96 FOUND 2"x2" STAKE AND TAG MARKED "L.S.1023 COOK." ACCEPTED AS EASTERLY CORNER OF LOT 10, TRACT NO. 6099, M.B.66-21. F.B.2710-116
- 97 SET SQUARE HEAD SPIKE AND TIN AT RECORD DIST. (25.00 FT.) FROM FOUND 2"x2" STAKE TO SOUTH-WEST PER TRACT NO.6471, M.B.69-38. F.B.2710-116
- 98 E.C. NOTHING SET. F.B.2710-116
- 99 SET TEMPORARY MARK ON MANHOLE COVER AT INTERSECTION OF 4 FOUND PUNCH MARKS ON SEWER MANHOLE RIM. NO REFERENCE. F.B.2710-122
- 100 FOUND 2"x2" STAKE AND TAG NO REFERENCE. ACCEPTED AS MOST SOUTHERLY CORNER LOT 10 TRACT NO. 6099 M.B.66-21. HELD AS CONTROL FOR RIGHT OF WAY LINE. F.B.2710-123
- 101 SET SQUARE HEAD SPIKE AND TIN. HELD 20.00 FT. FROM FOUND 2"x2" STAKE PER TRACT 6471, M.B.67-38. F.B.2710-116
- 102 SET COUNTY ENGINEER MONUMENT AT INTERSECTION IN HANDHOLE. F.B.2710-116,159
- 103 SET TEMPORARY MARK ON MANHOLE COVER AT INTERSECTION EASTERLY PROD OF CENTERLINE FROM WEST AND SOUTHWESTERLY PROD OF CENTERLINE FROM THE NORTHEAST. SET 4 TANGENT PUNCH MARKS ON MANHOLE RIM. F.B.2710-123
- 104 SET SQUARE HEAD SPIKE AND TIN AT RECORD DISTANCE 20.00 FT. FROM FOUND 2"x2" STAKE PER TRACT NO. 6471, M.B.69-38. F.B.2710-116,123
- 105 P.I. ESTABLISHED AT RECORD DISTANCE 339.44 FT. FROM CENTERLINE OF SANTA MONICA BLVD. SEE C.S.B.3016, NOTHING SET. F.B.2710-160
- 106 P.R.C. NOTHING SET. F.B.2710-160
- 107 SET TEMPORARY POINT ON MANHOLE COVER. ESTABLISHED BY PROPORTION BETWEEN STA. MONICA BL. ON THE SOUTH AND THE NORTHERLY BOUNDARY OF RANCHO LA BREA ON THE NORTH PER MAP OF SHERMAN TRACT M.B.50-26. SET 4 TANGENT PUNCH MARKS ON HANDHOLE RIM. F.B.2710-114,156.
- 108 FOUND COUNTY ENGINEER MONUMENT 8" BELOW SURFACE. SEE F.B.3218-81. F.B.3218-81
- 109 SET TEMPORARY POINT ON MANHOLE COVER AT INTERSECTION. SET 4 TANGENT PUNCH MARKS ON SEWER MANHOLE RIM. F.B.2710-158
- 110 P.I. ESTABLISHED AT RECORD DISTANCE 195.99 FT. FROM CENTERLINE OF SANTA MONICA BLVD. PER C.S.B.3016, NOTHING SET. F.B.2710-155
- 111 ESTABLISHED TEMPORARY MARK ON MANHOLE COVER AT INTERSECTION. SET 4 TANGENT PUNCH MARKS ON SEWER MANHOLE RIM. F.B.2710-155
- 112 B.C. NOTHING SET. F.B.2710-158
- 113 FOUND 1"x2" STAKE AND NAIL. SEE F.B.2710-29. F.B.3218-28
- 114 SET LARGE BOAT SPIKE, WASHER, AND TIN MARKED "L.A. CO. ENGR." AT INTERSECTION. F.B.3218-28,80
- E.C. NOTHING SET.
- SET LARGE BOAT SPIKE, WASHER AND TIN MARKED "L.A. CO. ENGR." FLUSH WITH SURFACE AT RECORD DISTANCE 19.07' FROM FOUND LARGE BOAT SPIKE TO EAST PER F.B. 2710-40. F.B.2710-161
- FOUND LARGE BOAT SPIKE AND TIN. SEE F.B.2710-40. F.B.2710-161
- SET L.A. CO. ENGINEER MONUMENT IN HANDHOLE AT INTERSECTION. CENTERLINE TO THE SOUTH, ESTABLISHED AT EQUAL DISTANCES BETWEEN CURB FACES. F.B.2710-161
- L.B. NO.4 FOUND LEAD AND TACK. SEE F.B.2710-39. ACCEPTED AS "L.B. NO.4" ANGLE POINT IN NORTH LINE RANCHO LA BREA. F.B.2710-163
- SET NAIL AT CALCULATED DISTANCE (27.41) AND 90 DEGREES FROM L.B. NO.4 SEE M.R.60-25 & F.B. 2710-39. F.B.2710-163
- SET COUNTY ENGINEER MONUMENT IN HANDHOLE AT INTERSECTION. F.B.2710-163
- P.I. NOTHING SET. ESTABLISHED AT RECORD DIST. 0.03 FT. SOUTHERLY OF FOUND BOAT SPIKE, WASHER AND TIN PER C.S.B. 3016. F.B.2710-164
- P.O.S.T. FOUND BOAT SPIKE, WASHER, AND TIN. SEE RD. DEPT. F.B.453-4. F.B.2710-33,164
- P.O.C. NOTHING SET. F.B.2710-164
- ESTABLISHED AT INTERSECTION, NOTHING SET. F.B.2710-164
- ESTABLISHED AT INTERSECTION, NOTHING SET. F.B.2710-164
- SET COUNTY ENGINEER MONUMENT IN HANDHOLE AT INTERSECTION. F.B.2710-164
- SET COUNTY ENGINEER MONUMENT IN HANDHOLE AT INTERSECTION. F.B.2710-164
- B.C. NOTHING SET. F.B.2710-36
- P.O.C. NOTHING SET. F.B.2710-36
- FOUND SPIKE, WASHER, AND TIN. NO REFERENCE. F.B.2710-36
- SET PUNCH MARK IN WASHER AT INTERSECTION. F.B.2710-36
- SET COUNTY ENGINEER MONUMENT AT INTERSECTION. F.B.2710-35,165
- ESTABLISHED AT INTERSECTION, NOTHING SET. F.B.2710-35,165
- FOUND LEAD AND TAG ON CENTERLINE PROD. F.B.2710-35
- FOUND 4 TANGENT PUNCH MARKS ON MANHOLE RIM. SEE F.B.2710-34,35. F.B.2710-165
- ESTABLISHED AT INTERSECTION, NOTHING SET. F.B.2710-165
- L.B. NO.5 FOUND LARGE STONE (18"x36") WITH HOLE IN TOP 24" ABOVE SURFACE. SEE RD. DEPT. F.B.F.X. 351-3. C.S.B. 3016. F.B.2710-143
- FOUND SPIKE, WASHER AND TIN. SEE RD. DEPT. F.B. F.X.354-4,13, RD. DEPT. F.X.351-2. F.B.2710-12,19
- FOUND 2" IRON PIPE. ACCEPTED AS THE SOUTH WESTERLY CORNER OF LOT 54 A.A. BARNETT TRACT M.B.13-105 AND WEST KNOLL TRACT M.B.50-68, TRACT 4912, M.B. 53-36, AND C.S.B.-124. F.B.3218-34
- CENTERLINE CONTROL (HILLDALE AVE. TO THE NORTH). SET NAIL ON CENTERLINE OF HILLDALE AVE. AT RECORD DISTANCE 125.00 FT. WEST OF FOUND 2" IRON PIPE ACCEPTED AS THE N.W. CORNER OF LOT 107, TRACT NO. NO.5934, M.B.26-41, PER SAID TRACT. F.B.2710-160
- FOUND 2" IRON PIPE AND TAG MARKED "L.S.1098" FLUSH WITH SURFACE. HELD AS CONTROL FOR RIGHT OF WAY LINE. SEE TRACT NO. 5934, M.B.62-41, R.S.32-2, F.B.2625-77. F.B.2710-43,160



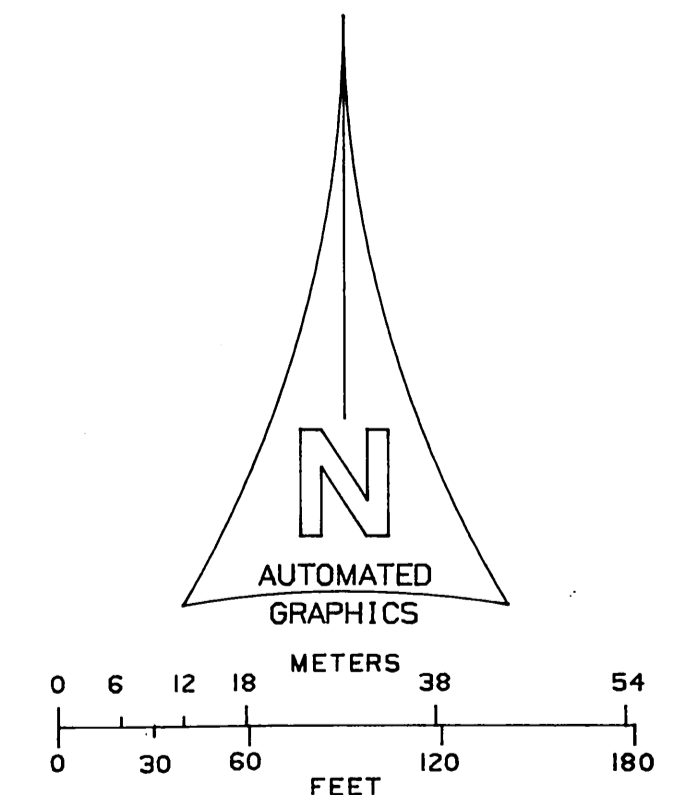
COUNTY OF LOS ANGELES DEPARTMENT OF COUNTY ENGINEER-FACILITIES STEPHEN J. KOONCE-COUNTY ENGINEER		ALIGNMENT MAP OF STREETS IN A PORTION OF WEST HOLLYWOOD & SHERMAN SEWER MAINTENANCE DISTRICT		COUNTY SURVEYOR'S MAP NO B-5418 SHEET 3 OF 5 SHEETS FILED: <i>October 17, 1962</i> BY: <i>R.J. Montalvo</i> SURVEYED MARCH 1961 - JUNE 1962 REFERENCE F.B.2710 F.B.3218	REVISION NO BY DATE
PREPARED BY SURVEY DIVISION RICHARD J. MITCHELL ASSISTANT DEPUTY COUNTY ENGINEER		BASIS OF BEARINGS CALIFORNIA COORDINATE SYSTEM, ZONE 7		JOB NUMBER 0222.37	INDEX MAP NO 22
CHECKED BY: <i>F. HARRIS</i> DRAWN BY: <i>F. FONG</i>					



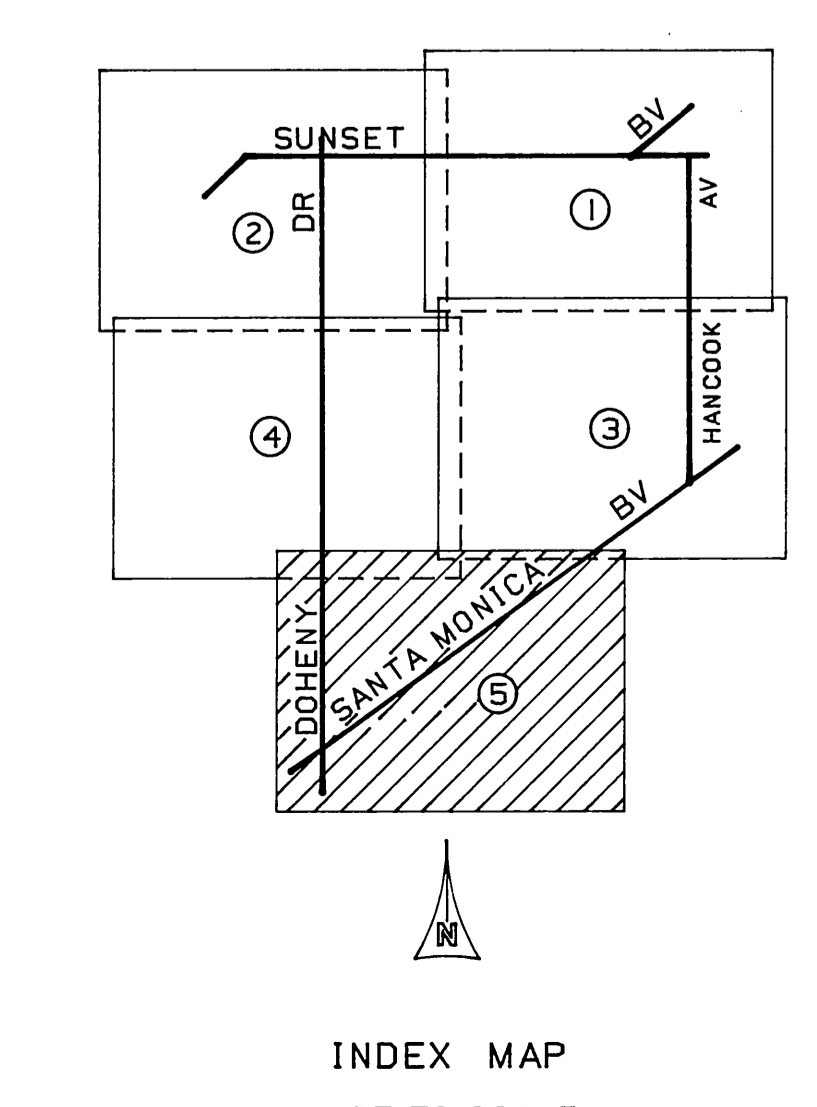
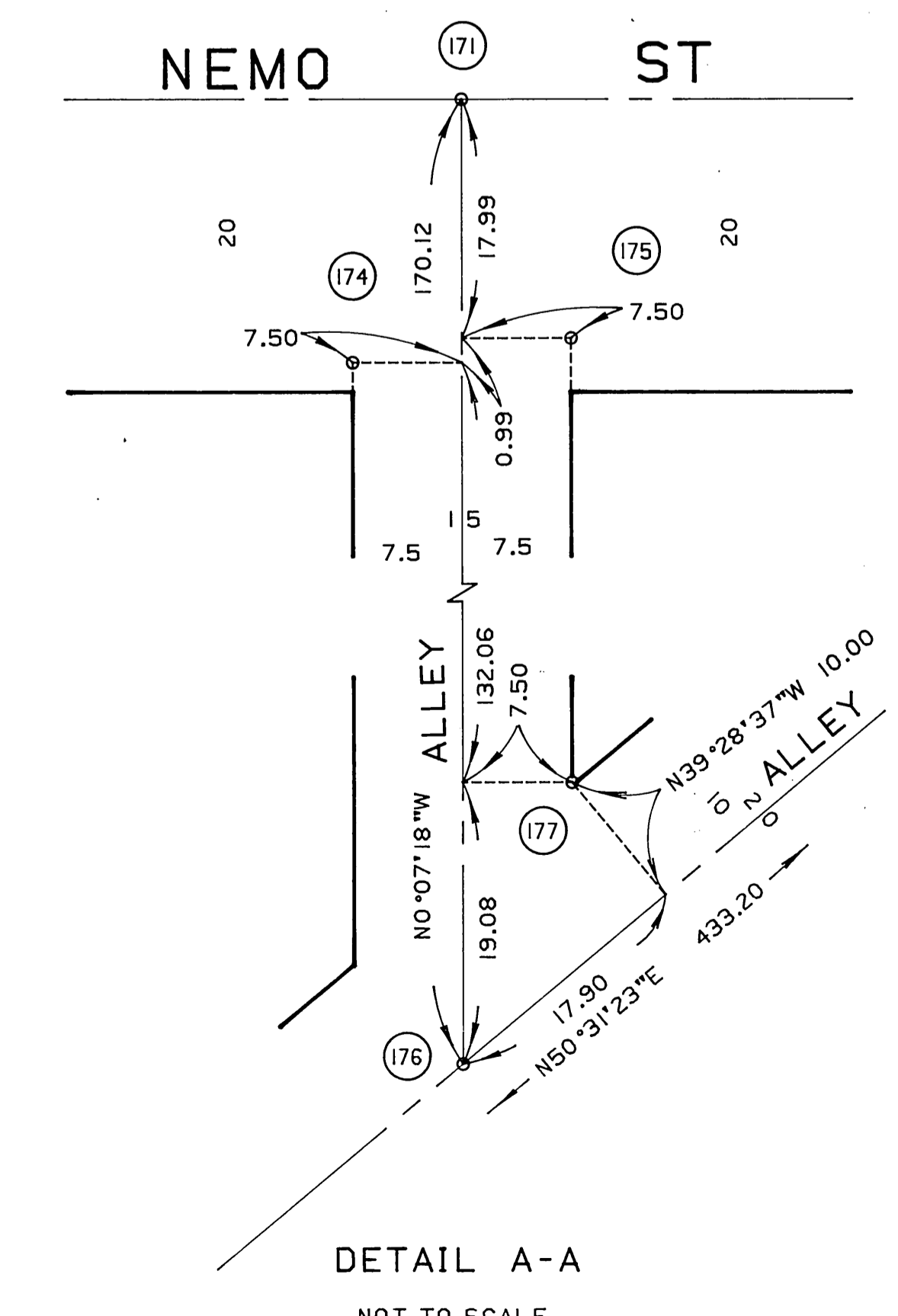
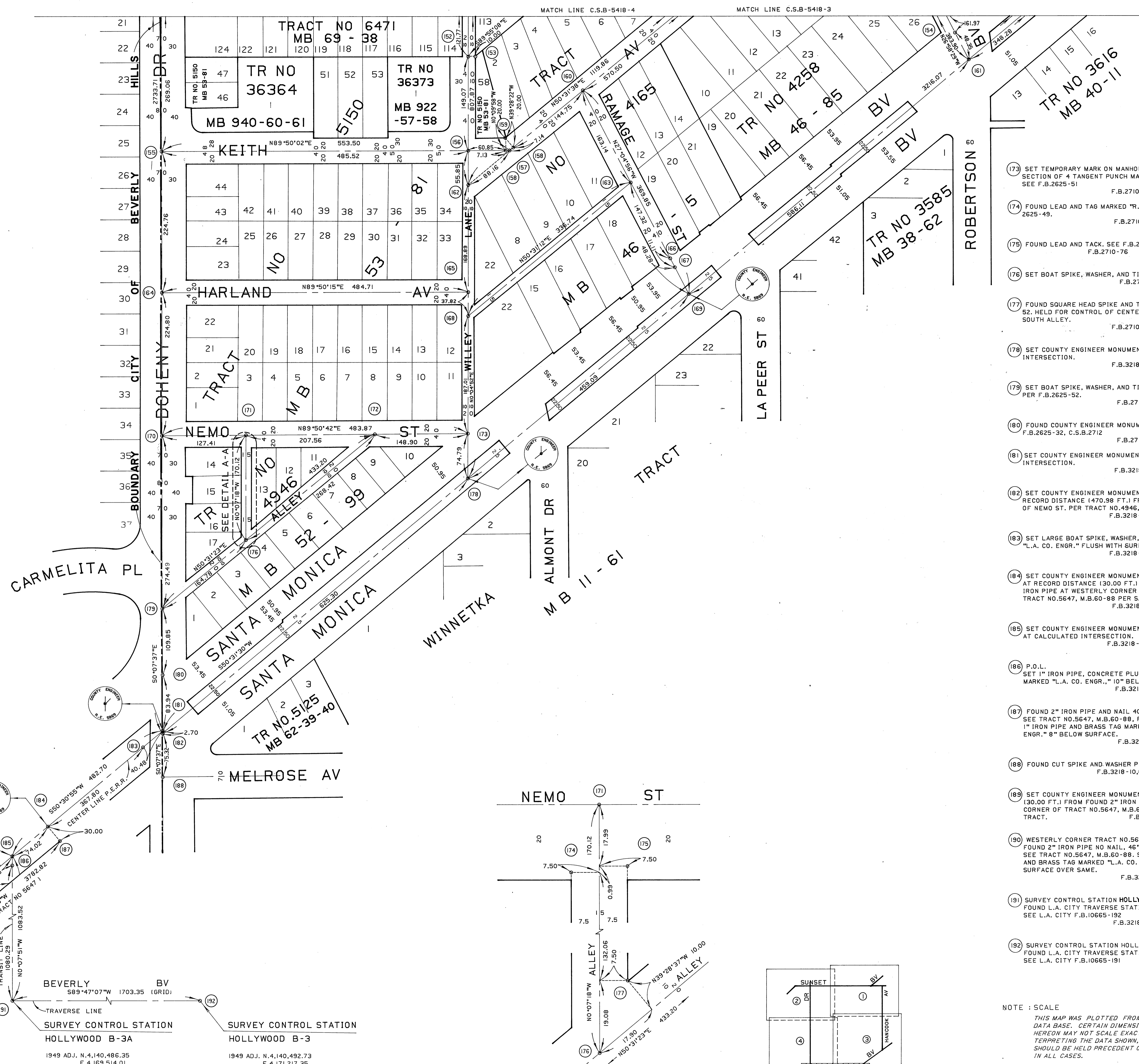
- (134) SET TEMPORARY MARK ON MANHOLE COVER AT INTERSECTION OF 4 TANGENT PUNCH MARKS ON SEWER MANHOLE RIM. SEE F.B.2625-67 F.B.2710-42,47
- (135) FOUND INTERSECTION OF 4 TANGENT PUNCH MARKS ON MANHOLE RIM. NO REFERENCE. F.B.2710-42
- (136) SET COUNTY ENGINEER MONUMENT IN HANDHOLE AT INTERSECTION. VERIFIED LOCATION OF CENTERLINE TO NORTH BY OFFSETS TO MONUMENTS AT N.W.COR.AN.E.COR. F.B.2710-162
- (137) FOUND PK NAIL. NO REFERENCE. F.B.2710-41
- (138) FOUND LEAD AND TACK, NO REFERENCE. ACCEPTED AS S.W. COR. LOT 8 TRACT NO. 20 M.B.12-176 F.B.2710-41
- (139) ESTABLISHED AT INTERSECTION. NOTHING SET. F.B.2710-162
- (140) FOUND SQUARE HEAD, SPIKE AND TIN. SEE F.B.2675-69. REPLACED SAME WITH BOAT SPIKE, WASHER, AND TIN. F.B.2710-162
- (141) FOUND TAG MARKED "L.S. 2568." SEE TRACT NO.5934, M.B.62-41, HELD FOR CENTERLINE CONTROL. FITS EQUAL DISTANCES BETWEEN CURB FACES TO SOUTH. F.B.2710-41,137
- (142) FOUND BOAT SPIKE, WASHER, AND TIN. SEE C.S.B.-2712, F.B.2625-66. F.B.2710-73
- (143) SET TEMPORARY MARK ON MANHOLE COVER AT INTERSECTION OF TANGENT PUNCH MARKS ON SEWER MANHOLE RIM PER F.B.2625-76. F.B.2710-89
- (144) FOUND NOTHING, RECENT STREET RECONSTRUCTION. SET BOAT SPIKE, WASHER, AND TIN BY TANGENT TIES PER F.B.2625-65. F.B.2710-72
- (145) SET TEMPORARY MARK ON MANHOLE COVER AT INTERSECTION OF 4 TANGENT PUNCH MARKS ON SEWER MANHOLE RIM. SEE F.B.2625-74 F.B.2710-87
- (146) FOUND NOTHING, RECENT STREET RECONSTRUCTION. SET BOAT SPIKE, WASHER, AND TIN BY TANGENT TIES PER F.B.2625-63. F.B.2710-71
- (147) FOUND COUNTY ENGINEER MONUMENT IN HANDHOLE. SEE C.S.B.-2712, F.B.2625-62 F.B.2710-70
- (148) FOUND COUNTY ENGINEER MONUMENT IN HANDHOLE. SEE C.S.B.-2712, F.B.2625-62 F.B.2710-70
- (149) SET TEMPORARY MARK AT INTERSECTION. SET 4 TANGENT PUNCH MARKS ON SEWER MANHOLE RIM. F.B.2710-150
- (150) SET TEMPORARY MARK AT INTERSECTION OF 4 TANGENT PUNCH MARKS IN SEWER MANHOLE RIM. SEE F.B.2710-121 F.B.2710-150
- (151) SET COUNTY ENGINEER MONUMENT IN HANDHOLE. ESTABLISHED AT RECORD DISTANCE (12.67') NORTH OF CENTERLINE TO WEST PER TRACT NO.6471 M.B.69-38 F.B.2710-149
- (152) FOUND COUNTY ENGINEER MONUMENT IN HANDHOLE. SEE C.S.B.-2712, F.B.2625-61 F.B.2710-69
- (153) SET LARGE BOAT SPIKE, WASHER AND TIN. MARKED "L.A. CO. ENGR." ESTABLISHED AT RECORD DIST. (121.77') FROM N.E.COR. LOT 57 TRACT NO. 5150 M.B.53-81, PER SAID TRACT. F.B.2710-149



NOTE : SCALE
THIS MAP WAS PLOTTED FROM EXISTING DATA BASE. CERTAIN DIMENSIONS SHOWN HEREON MAY NOT SCALE EXACTLY. IN INTERPRETING THE DATA SHOWN, DIMENSIONS SHOULD BE HELD PRECEDENT OVER SCALE IN ALL CASES.

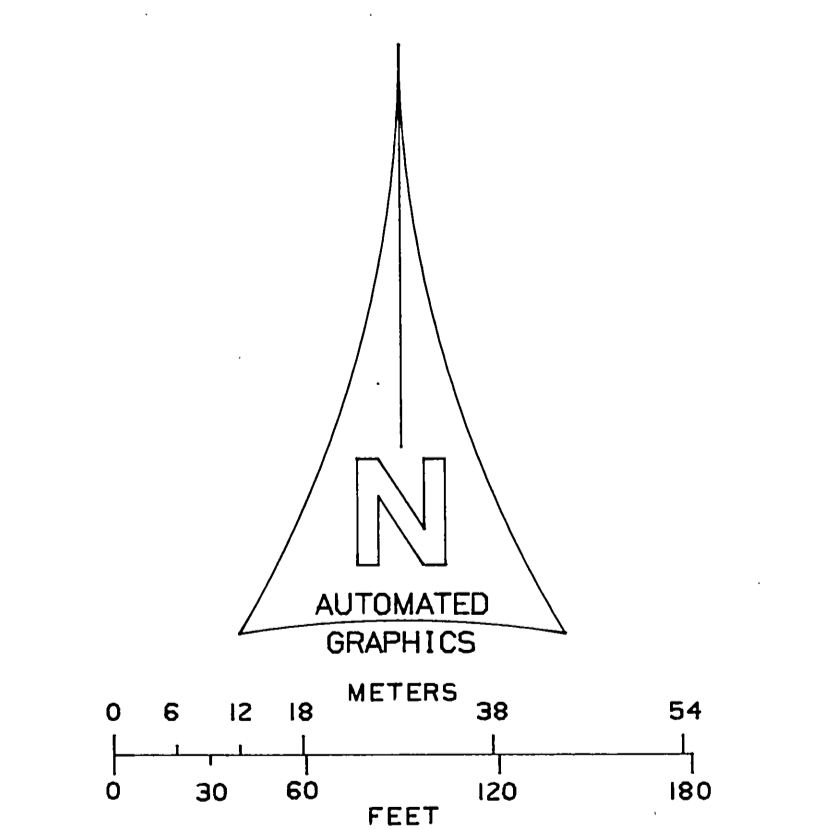


COUNTY OF LOS ANGELES DEPARTMENT OF COUNTY ENGINEER-FACILITIES STEPHEN J. KRONCE-COUNTY ENGINEER PREPARED BY SURVEY DIVISION RICHARD J. MITCHELL ASSISTANT DEPUTY COUNTY ENGINEER SURVEYED BY A.N.HELLSTROM CHECKED BY B.HILLARIO DRAWN BY E.FONG	ALIGNMENT MAP OF STREETS IN A PORTION OF WEST HOLLYWOOD & SHERMAN SEWER MAINTENANCE DISTRICT		COUNTY SURVEYOR'S MAP NO B-5418 SHEET 4 OF 5 SHEETS FILED: <i>October 17, 1962</i> <i>[Signature]</i> DEPUTY SURVEYED MARCH 1961 - JUNE 1962 REFERENCE F.B.2701 F.B.3218 JOB NUMBER 9222-37 INDEX MAP NO 22	REVISION NO BY DATE
	BASIS OF BEARINGS CALIFORNIA COORDINATE SYSTEM, ZONE 7			



- (124) FOUND SQUARE HEAD SPIKE. SEE F.B.2710-83. F.B.2710-149
- (125) NORTHEAST CORNER OF LOT 57 AND NORTHWEST CORNER OF LOT 58 OF TRACT NO. 5150, FOUND 2" IRON PIPE WOOD PLUG AND NAIL 12" ABOVE SURFACE. SEE TRACT NO. 5150, M.B.53-81, F.B.2625-59. F.B.2710-83,149
- (126) FOUND SPIKE, WASHER, AND TIN SEE F.B.2710-125. USED FOR CENTERLINE CONTROL. F.B.3218-20,76
- (127) FOUND COUNTY ENGINEER MONUMENT IN HANDHOLE. SEE F.B.2625-54, C.S.B.-2712. F.B.2710-68
- (128) FOUND SQUARE HEAD SPIKE. SEE F.B.2625-58. REPLACED SAME WITH BOAT SPIKE, WASHER AND TIN. F.B.2710-82
- (129) SET TEMPORARY MARK ON MANHOLE COVER AT INTERSECTION. SET 4 TANGENT PUNCH MARKS ON SEWER MANHOLE RIM. F.B.2710-148
- (130) SET TEMPORARY MARK ON MANHOLE COVER AT INTERSECTION. SET 4 TANGENT PUNCH MARKS ON SEWER MANHOLE RIM. F.B.2710-148
- (131) ESTABLISHED AT RECORD DISTANCE (120.00 FT.) FROM FOUND 2" IRON PIPE PER F.B.2625-58, NOTHING SET. F.B.2710-148
- (132) FOUND 2" IRON PIPE WITH WOOD PLUG AND NAIL FLUSH WITH SURFACE, HELD FOR CENTERLINE CONTROL. SEE F.B.2625-58, F.B.2710-82 F.B.2710-148
- (133) FOUND SQUARE HEAD SPIKE. REPLACED SAME WITH BOAT SPIKE, WASHER, AND TIN. SEE RD. DEPT. F.B.F.X. 191-4 F.B.2710-119
- (134) SET LARGE BOAT SPIKE, WASHER, AND TIN MARKED "L.A. CO. ENGR." AT INTERSECTION. F.B.3218-76
- (135) SET COUNTY ENGINEER MONUMENT IN HANDHOLE AT INTERSECTION. F.B.2710-148
- (136) FOUND CONCRETE SPIKE. SEE RD. DEPT. F.B.F.X. 191-3 F.B.2710-118
- (137) FOUND COUNTY ENGINEER MONUMENT IN HANDHOLE. SEE C.S.B.-2712, F.B.2625-53 F.B.2710-67
- (138) ESTABLISHED BY PROPORTION BETWEEN N.E. CORNER LOT 57 AND NEMO ST. PER TRACT NO.5150, M.B.53-81 SET TEMPORARY MARK ON MANHOLE COVER. SET 4 TANGENT PUNCH MARKS ON SEWER MANHOLE RIM. F.B.2710-147
- (139) SET COUNTY ENGINEER MONUMENT 8" BELOW SURFACE ON LINE. F.B.3218-16,74
- (140) FOUND LARGE BOAT SPIKE, WASHER, AND TIN FLUSH WITH SURFACE SEE F.B.2710-117. F.B.3218-16,74
- (141) FOUND NAIL. SEE F.B.2625-57 F.B.2710-80
- (142) SET COUNTY ENGINEER MONUMENT 8" BELOW SURFACE AT INTERSECTION. F.B.3218-16,74
- (143) FOUND COUNTY ENGINEER MONUMENT IN HANDHOLE. SEE C.S.B.-2712, F.B.2625-49 F.B.2710-66
- (144) SET BOAT SPIKE, WASHER, AND TIN AT INTERSECTION. F.B.2710-76
- (145) FOUND CUT SPIKE AND WASHER PER F.B.2625-23 F.B.3218-10,61
- (146) SET COUNTY ENGINEER MONUMENT AT RECORD DISTANCE (30.00 FT.) FROM FOUND 2" IRON PIPE AT WESTERLY CORNER OF BLOCK 1, TRACT NO.5647, M.B.60-88 PER SAID TRACT. F.B.3218-8
- (147) WESTERLY CORNER TRACT NO.5647, M.B.60-88 FOUND 2" IRON PIPE NO NAIL, 46" BELOW SURFACE. SEE TRACT NO.5647, M.B.60-88. SET CONCRETE PLUG AND BRASS TAG MARKED "L.A. CO. ENGR.", 8" BELOW SURFACE OVER SAME. F.B.3218-8
- (148) SURVEY CONTROL STATION HOLLYWOOD B-3A FOUND L.A. CITY TRAVERSE STATION IN HANDHOLE. SEE L.A. CITY F.B.10665-192 F.B.3218-59
- (149) SURVEY CONTROL STATION HOLLYWOOD B-3 FOUND L.A. CITY TRAVERSE STATION IN HANDHOLE. SEE L.A. CITY F.B.10665-191

NOTE : SCALE
 THIS MAP WAS PLOTTED FROM EXISTING DATA BASE. CERTAIN DIMENSIONS SHOWN HEREON MAY NOT SCALE EXACTLY. IN INTERPRETING THE DATA SHOWN, DIMENSIONS SHOULD BE HELD PRECEDENT OVER SCALE IN ALL CASES.



COUNTY OF LOS ANGELES DEPARTMENT OF COUNTY ENGINEER-FACILITIES STEPHEN J. KOONCE-COUNTY ENGINEER PREPARED BY SURVEY DIVISION RICHARD J. MITCHELL ASSISTANT DEPUTY COUNTY ENGINEER SURVEYED BY A. N. HELLSTROM CHECKED BY B. H. LARIC DRAWN BY E. FONG	ALIGNMENT MAP OF STREETS IN A PORTION OF WEST HOLLYWOOD & SHERMAN SEWER MAINTENANCE DISTRICT		COUNTY SURVEYOR'S MAP NO B-5418 SHEET 5 OF 5 SHEETS FILED: <i>October 17, 1962</i> <i>B. J. Aguirre</i> DEPUTY COUNTY SURVEYOR MARCH 1961 - JUNE 1962 REFERENCE F.B.2701 F.B.3218 JOB NUMBER 0222-37 INDEX MAP NO 22	REVISION NO BY DATE
	BASIS OF BEARINGS CALIFORNIA COORDINATE SYSTEM, ZONE 7			