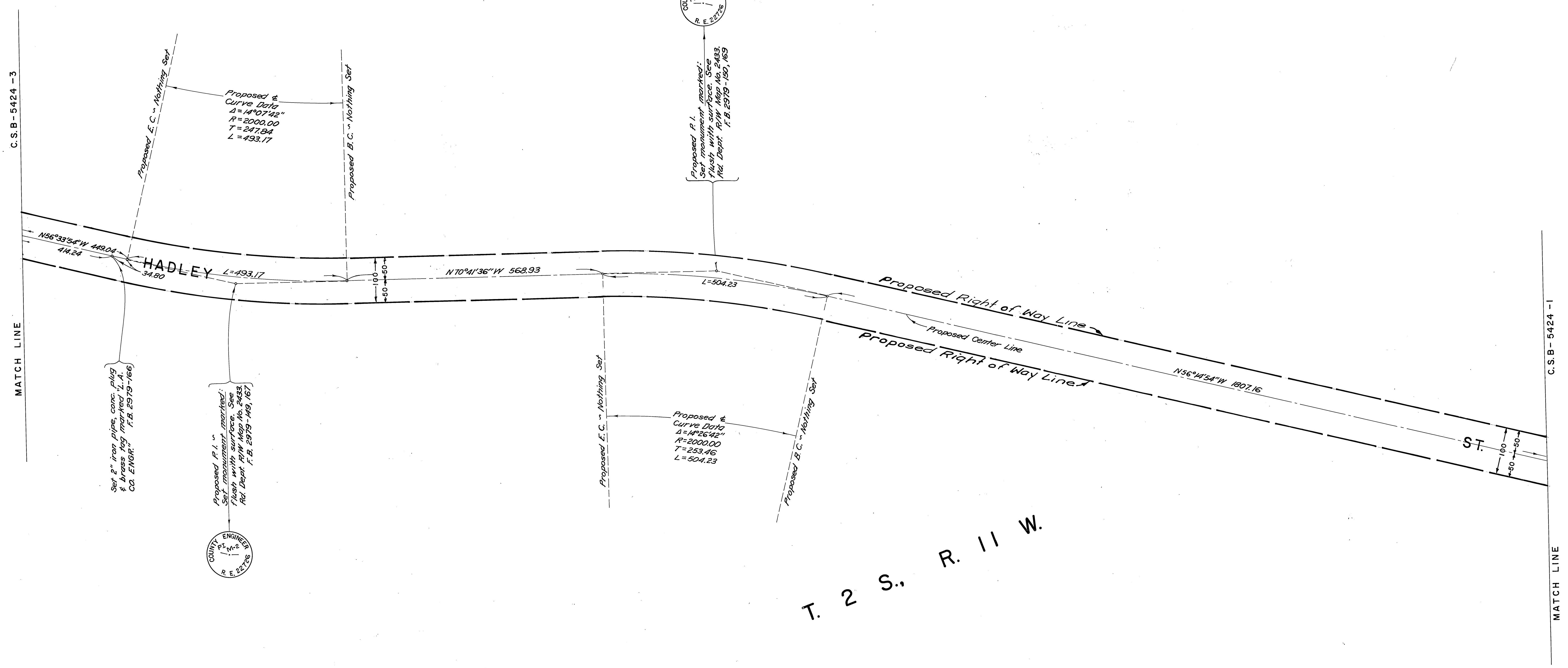


SECTION 23



C.S.B-5424-3

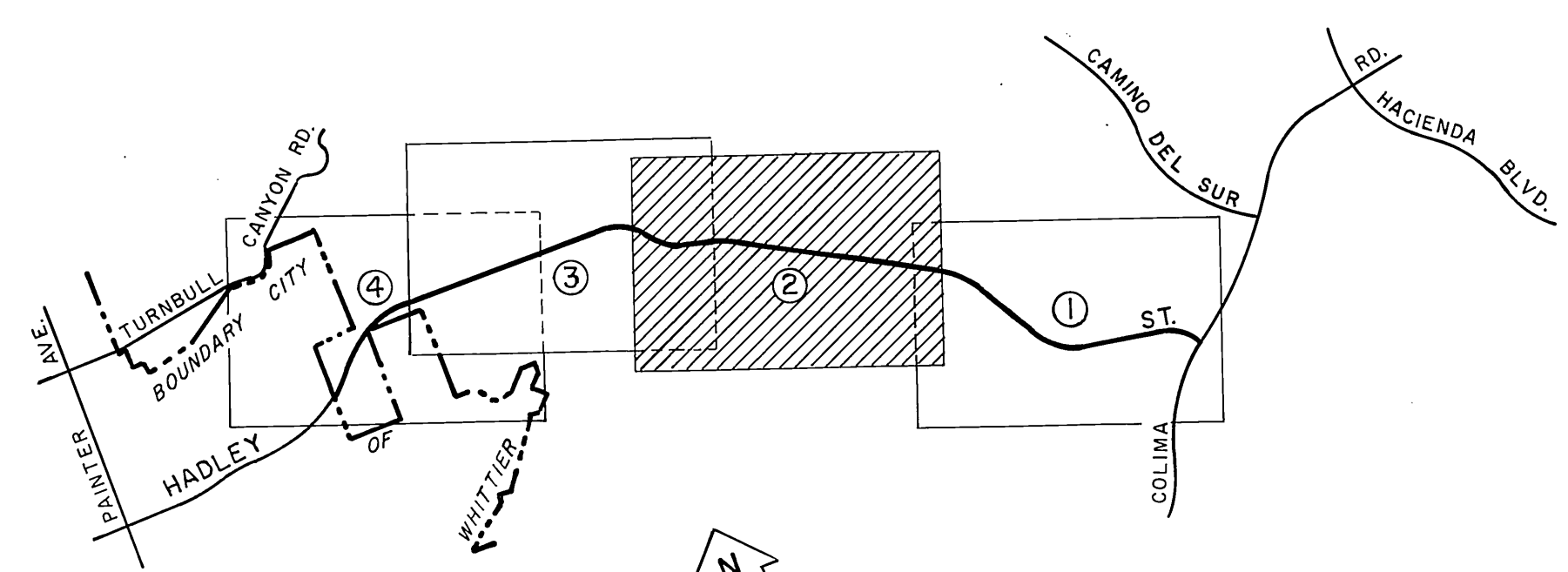
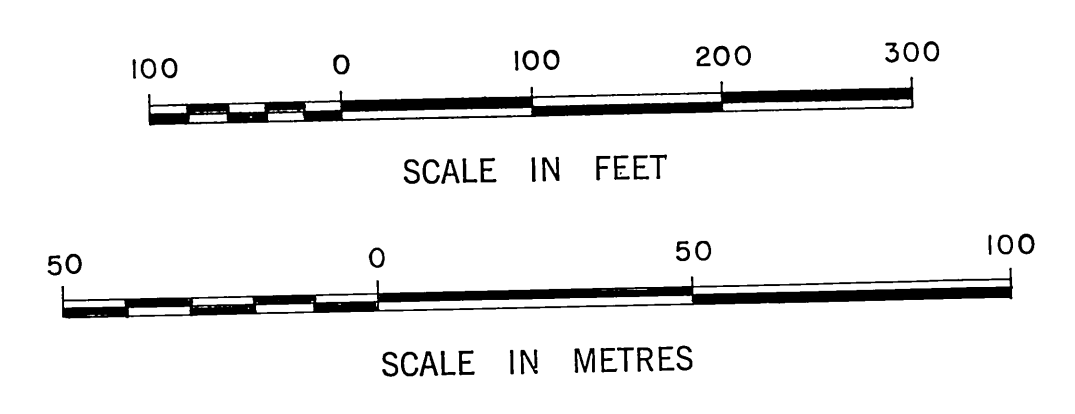
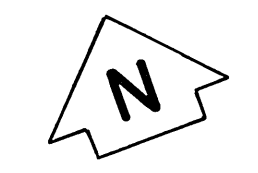
MATCH LINE

C.S.B-5424-1

MATCH LINE

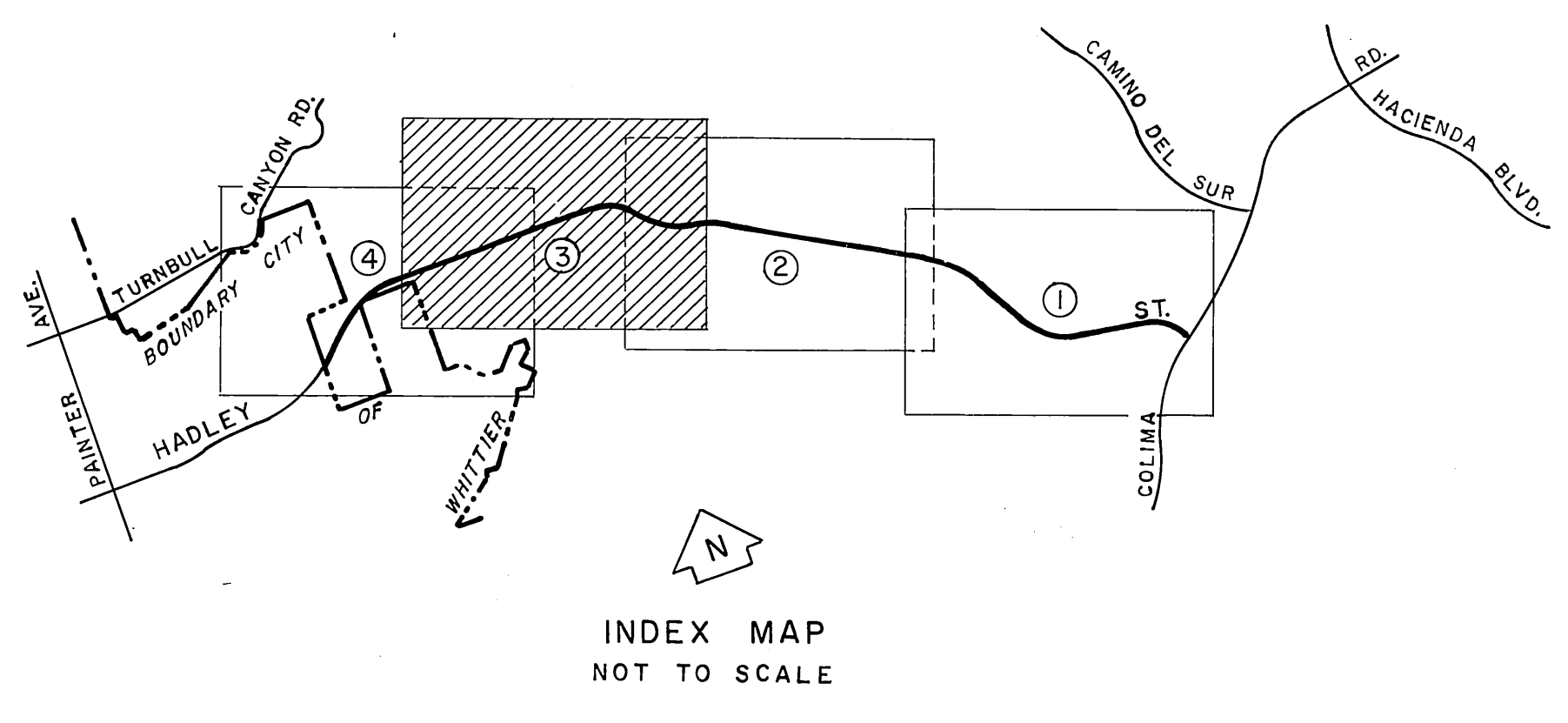
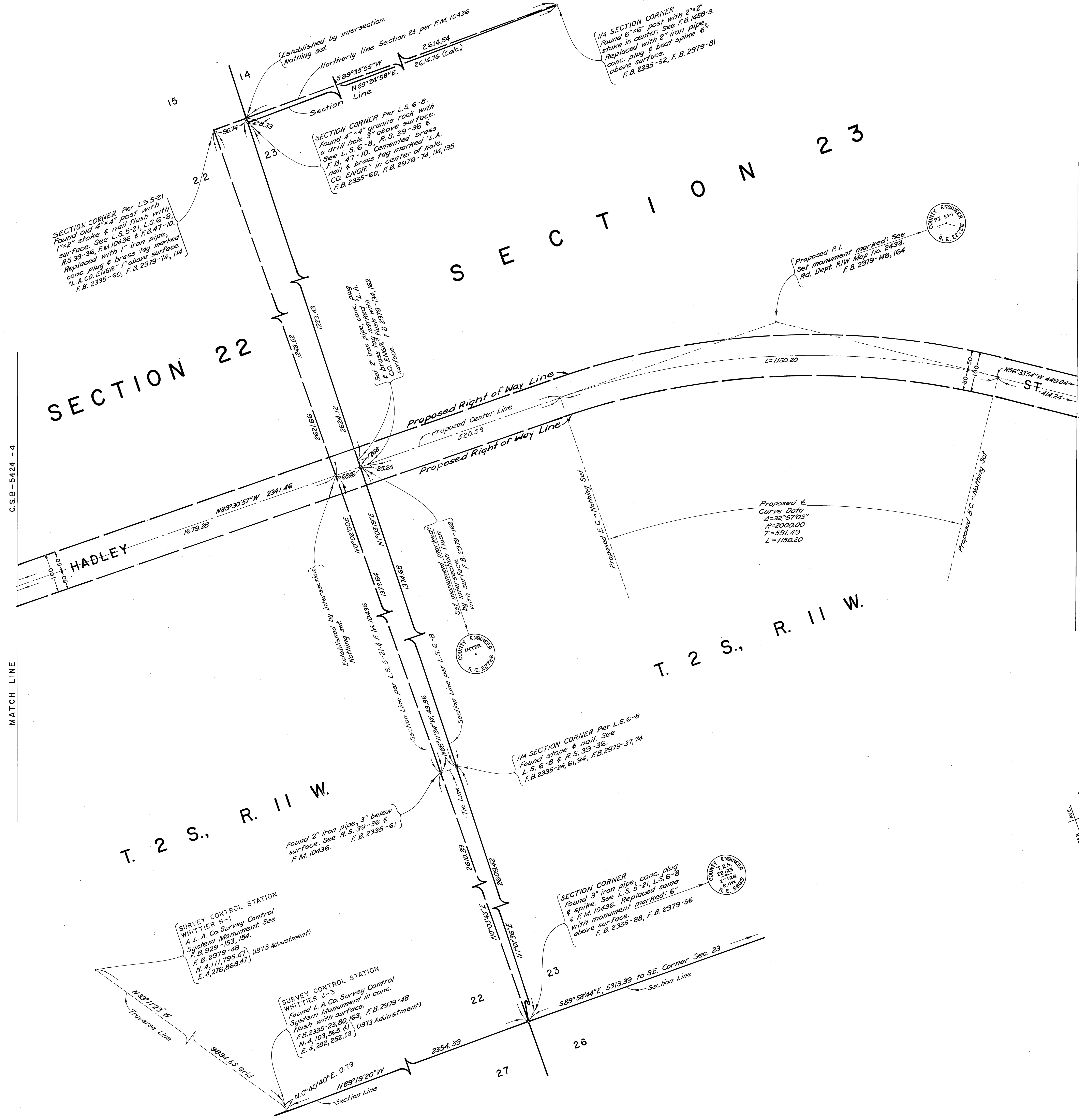
T. 2 S. R. 11 W.

NOTE:
THIS MAP SUPERSEDES C.S.B-5340 SEE
I.E.C. MINUTE, DATED JANUARY 22, 1981.

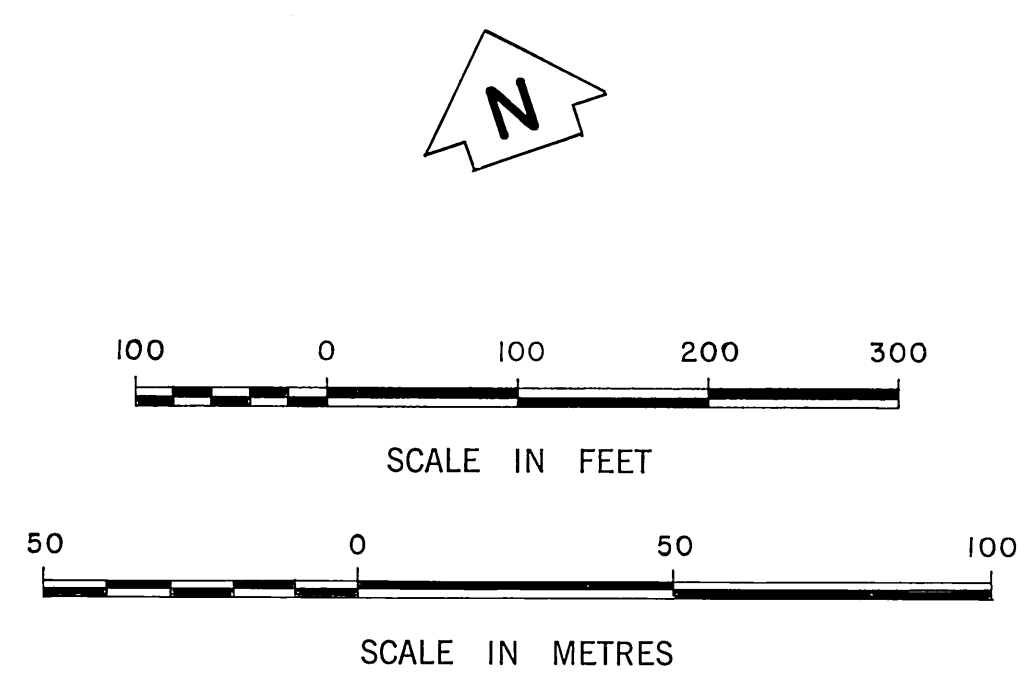


INDEX MAP
NOT TO SCALE

COUNTY OF LOS ANGELES DEPARTMENT OF COUNTY ENGINEER-FACILITIES STEPHEN J. KOONCE-COUNTY ENGINEER PREPARED BY SURVEY DIVISION RICHARD J. MITCHELL ASSISTANT DEPUTY COUNTY ENGINEER SURVEYED BY <u>F. E. BROOKS</u> CHECKED BY <u>B. GOINS</u> DRAWN BY <u>G. MASUDA</u>	ALIGNMENT MAP OF HADLEY STREET FROM COLIMA ROAD TO WHITTIER CITY BOUNDARY BASIS OF BEARINGS CALIFORNIA COORDINATE SYSTEM, ZONE 7	COUNTY SURVEYOR'S MAP NO. B-5424 SHEET 2 OF 4 SHEETS FILED: <u>March 27, 1982</u> <u>R. J. Mitchell</u> DEPUTY SURVEYED JANUARY 1958 - JULY 1977 REFERENCE F.B. 2335 & F.B. 2979 JOB NUMBER 1500.14 INDEX MAP NO. 099-277
	REVISION NO. BY DATE	
	(Empty revision table)	
	(Empty revision table)	

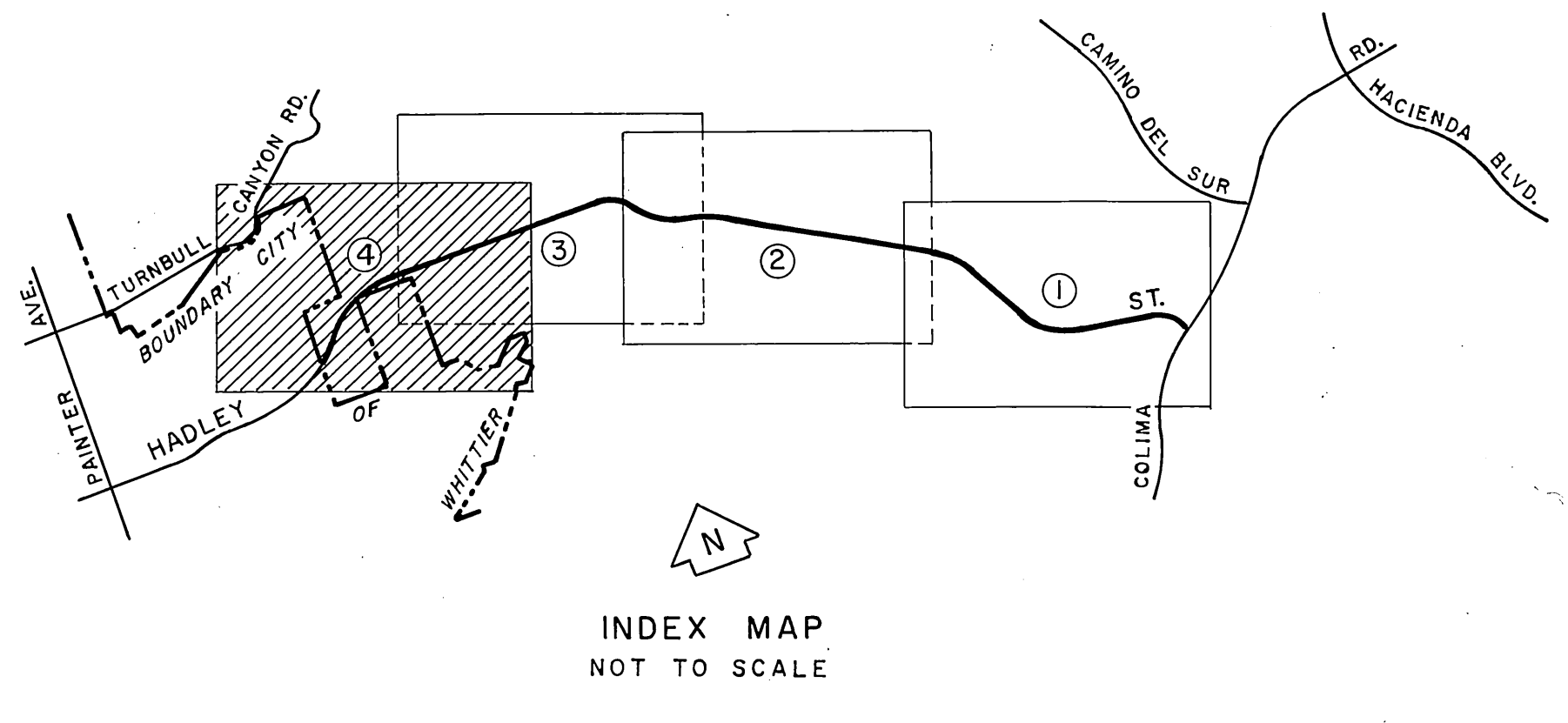
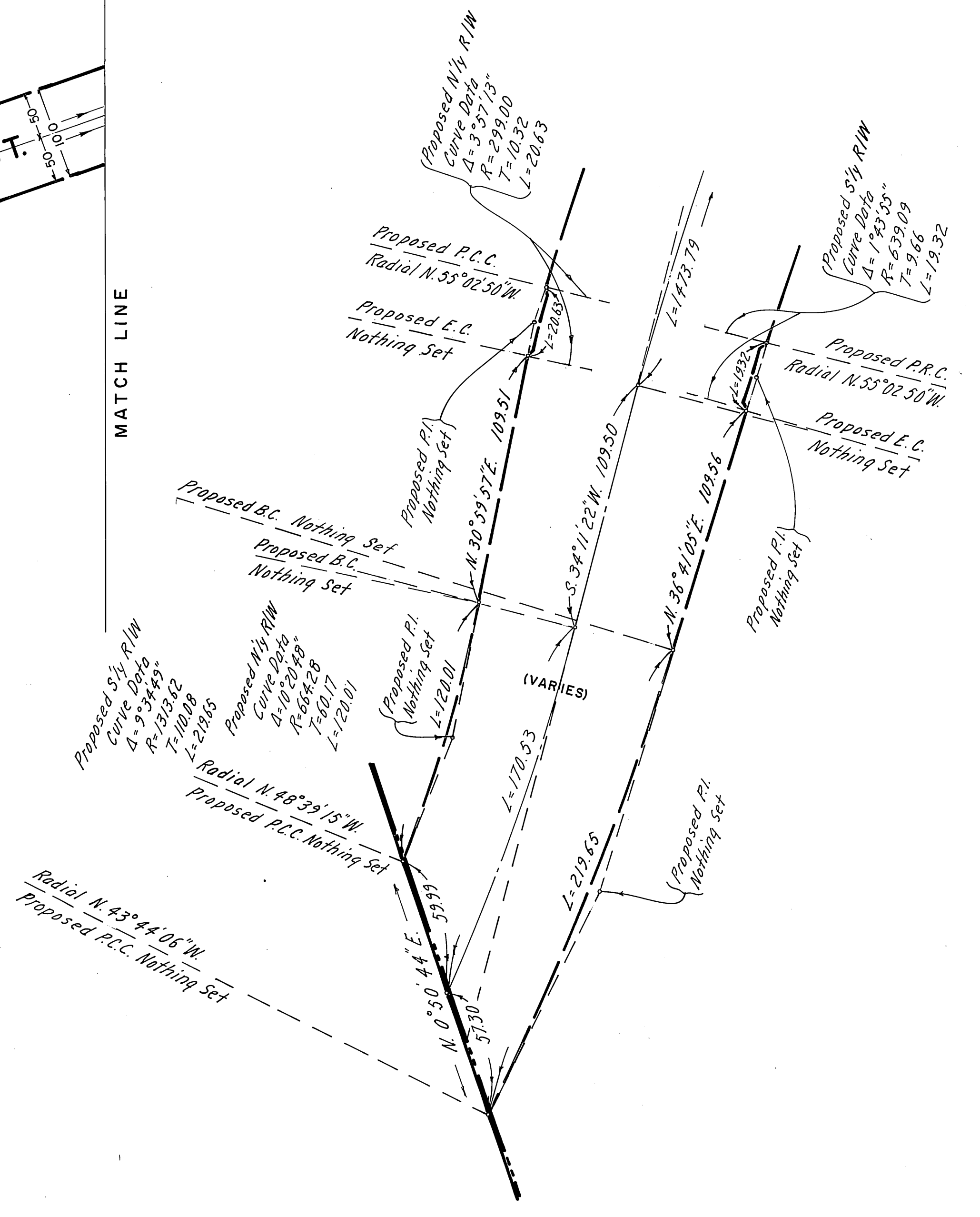
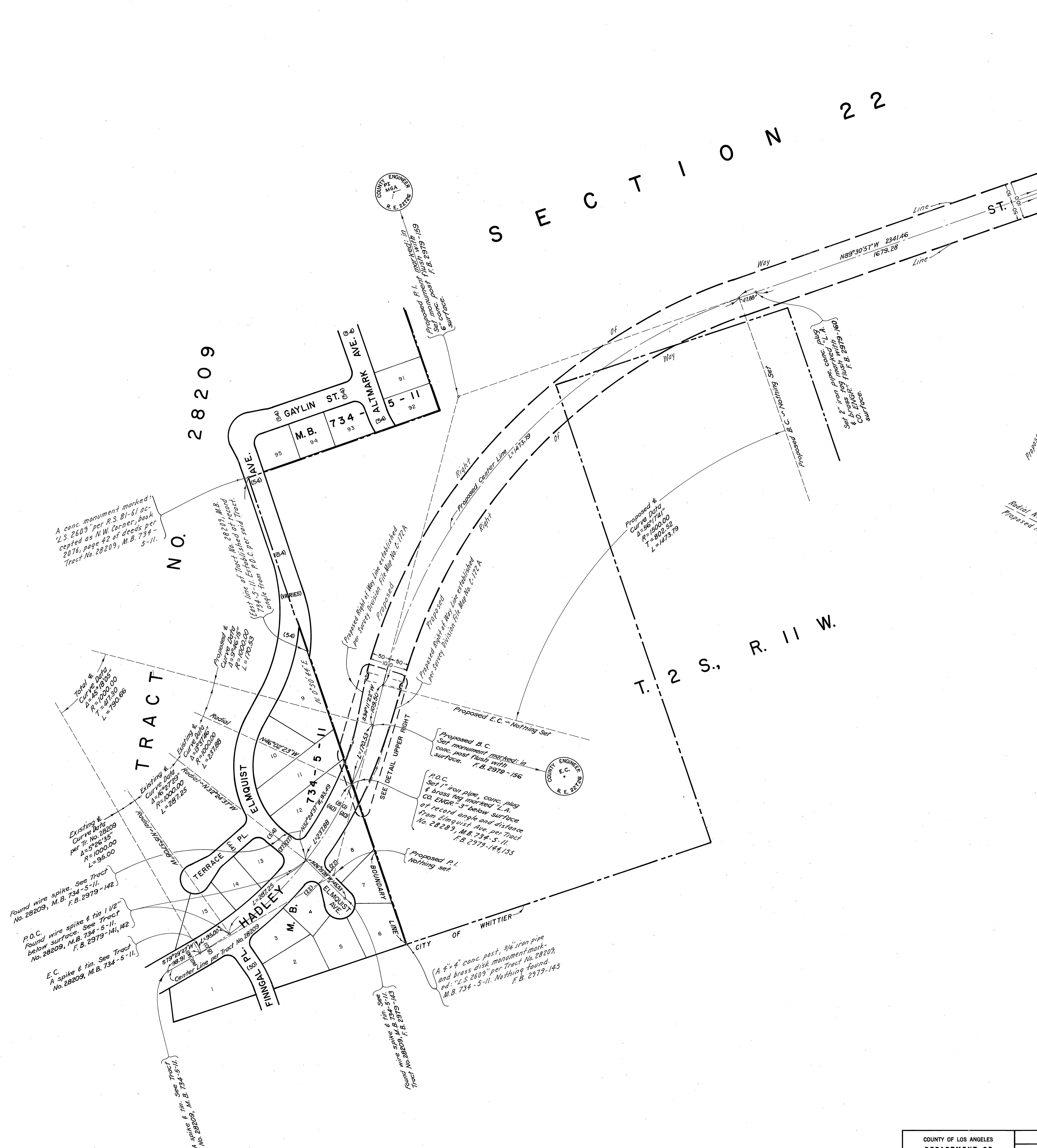


NOTE:
THIS MAP SUPERSEDES C.S.B-5340. SEE
I.E.C. MINUTE, DATED JANUARY 22, 1981.

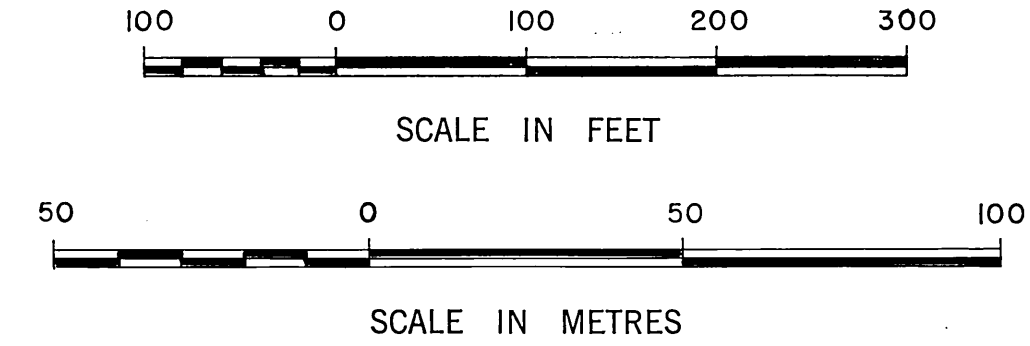


COUNTY OF LOS ANGELES DEPARTMENT OF COUNTY ENGINEER-FACILITIES STEPHEN J. KOONCE-COUNTY ENGINEER PREPARED BY SURVEY DIVISION RICHARD J. MITCHELL ASSISTANT DEPUTY COUNTY ENGINEER SURVEYED BY F. E. BROOKS CHECKED BY B. GOINS DRAWN BY G. MASUDA	ALIGNMENT MAP OF HADLEY STREET FROM COLIMA ROAD TO WHITTIER CITY BOUNDARY		COUNTY SURVEYOR'S MAP NO. B-5424 SHEET 3 OF 4 SHEETS FILED: <u>March 31, 1982</u> <u>R. J. Mitchell</u> DEPUTY SURVEYED JANUARY 1958 - JULY 1977 REFERENCE F. B. 2335 & F. B. 2979	REVISION NO. BY DATE
	BASIS OF BEARINGS CALIFORNIA COORDINATE SYSTEM, ZONE 7		F. B. 2335 & F. B. 2979 JOB NUMBER 1500.14 INDEX MAP NO. 099 - 277	

SECTION 22



NOTE:
THIS MAP SUPERSEDES C.S.B-5340. SEE
I.E.C. MINUTE, DATED JANUARY 22, 1981.



COUNTY OF LOS ANGELES DEPARTMENT OF COUNTY ENGINEER-FACILITIES STEPHEN J. KOONCE-COUNTY ENGINEER PREPARED BY SURVEY DIVISION RICHARD J. MITCHELL ASSISTANT COUNTY ENGINEER SURVEYED BY F. E. BROOKS CHECKED BY B. GOINS DRAWN BY G. MASUDA	ALIGNMENT MAP OF HADLEY STREET FROM COLIMA ROAD TO WHITTIER CITY BOUNDARY BASIS OF BEARINGS CALIFORNIA COORDINATE SYSTEM, ZONE 7		COUNTY SURVEYOR'S MAP NO. B-5424 SHEET 4 OF 4 SHEETS FILED: <i>March 21, 1982</i> DEPUTY SURVEYED JANUARY 1958 - JULY 1977 REFERENCE F.B. 2335 & F.B. 2979	REVISION NO. BY DATE
			JOB NUMBER 1500.14	INDEX MAP NO. 099 - 217