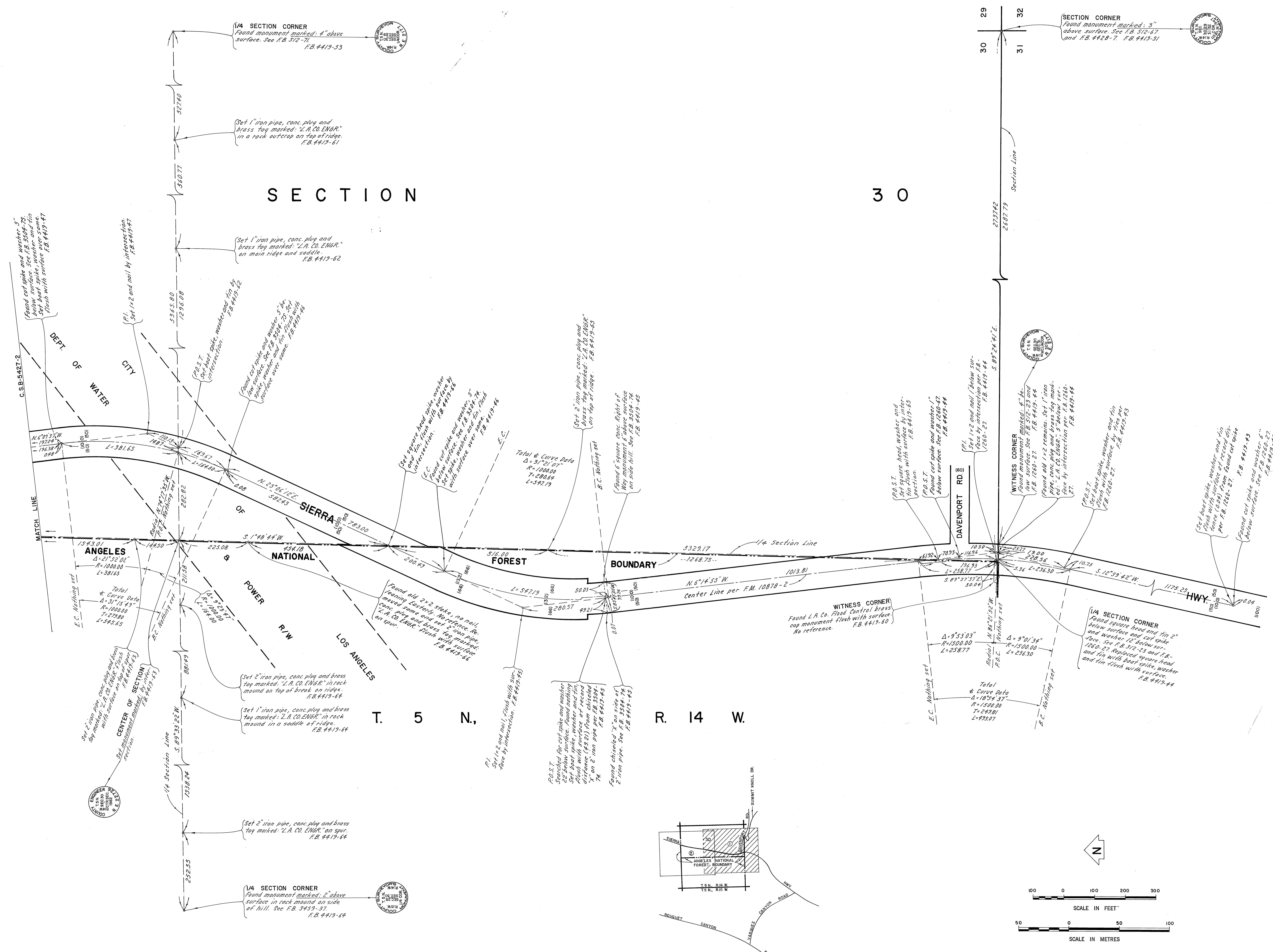
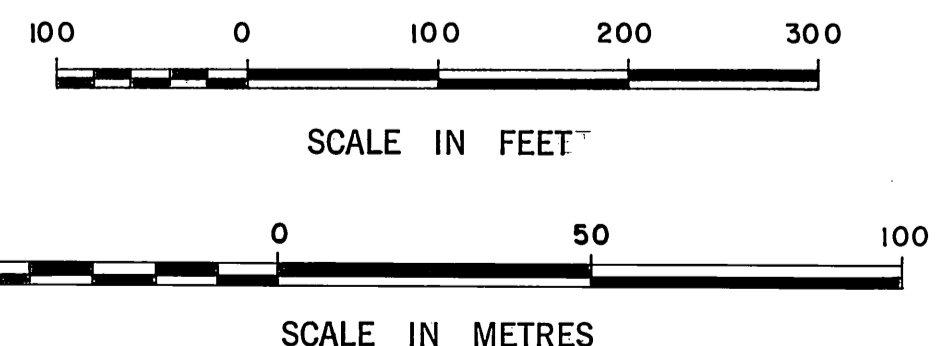
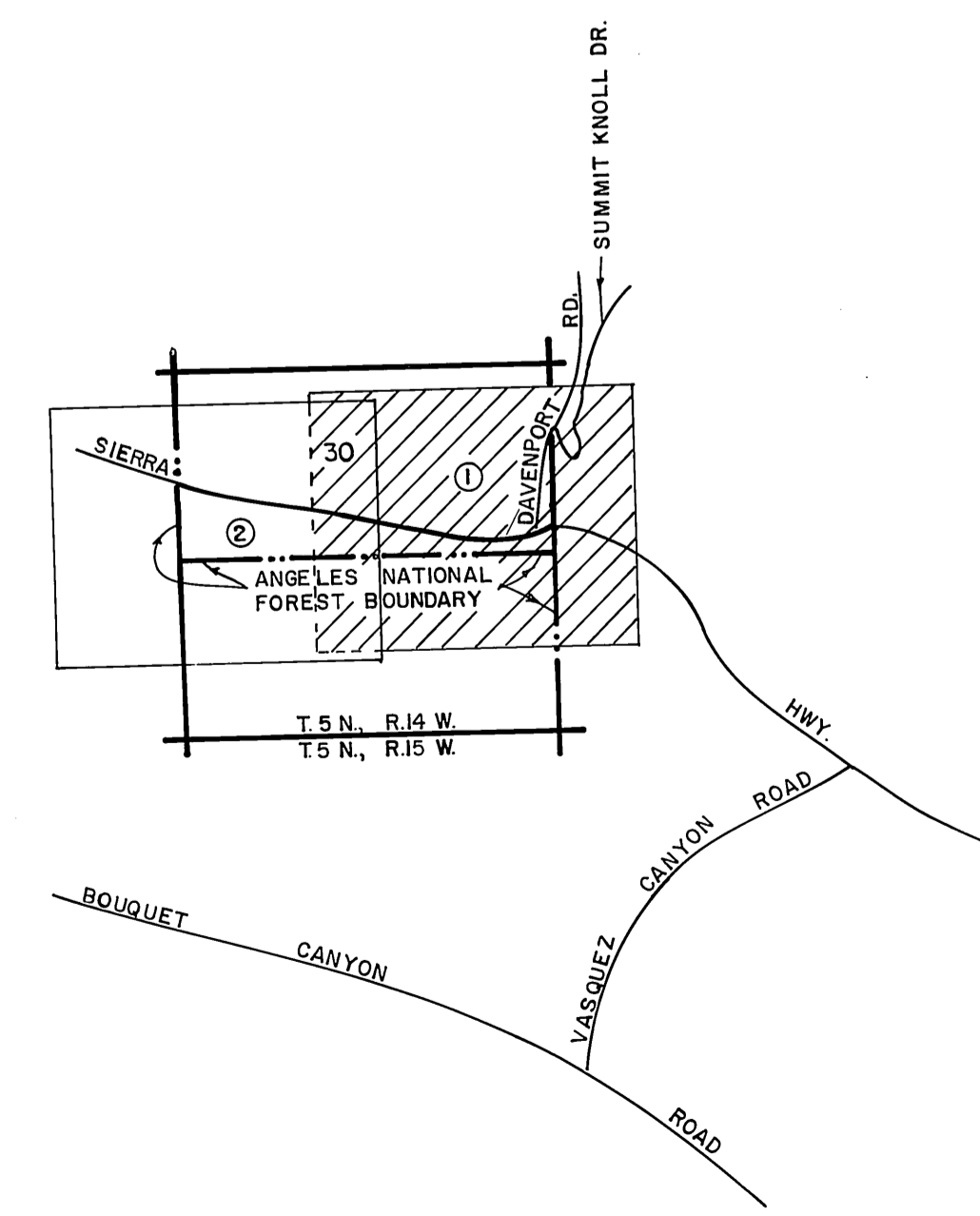


C-2-B-2451-1



SECTION 30

30

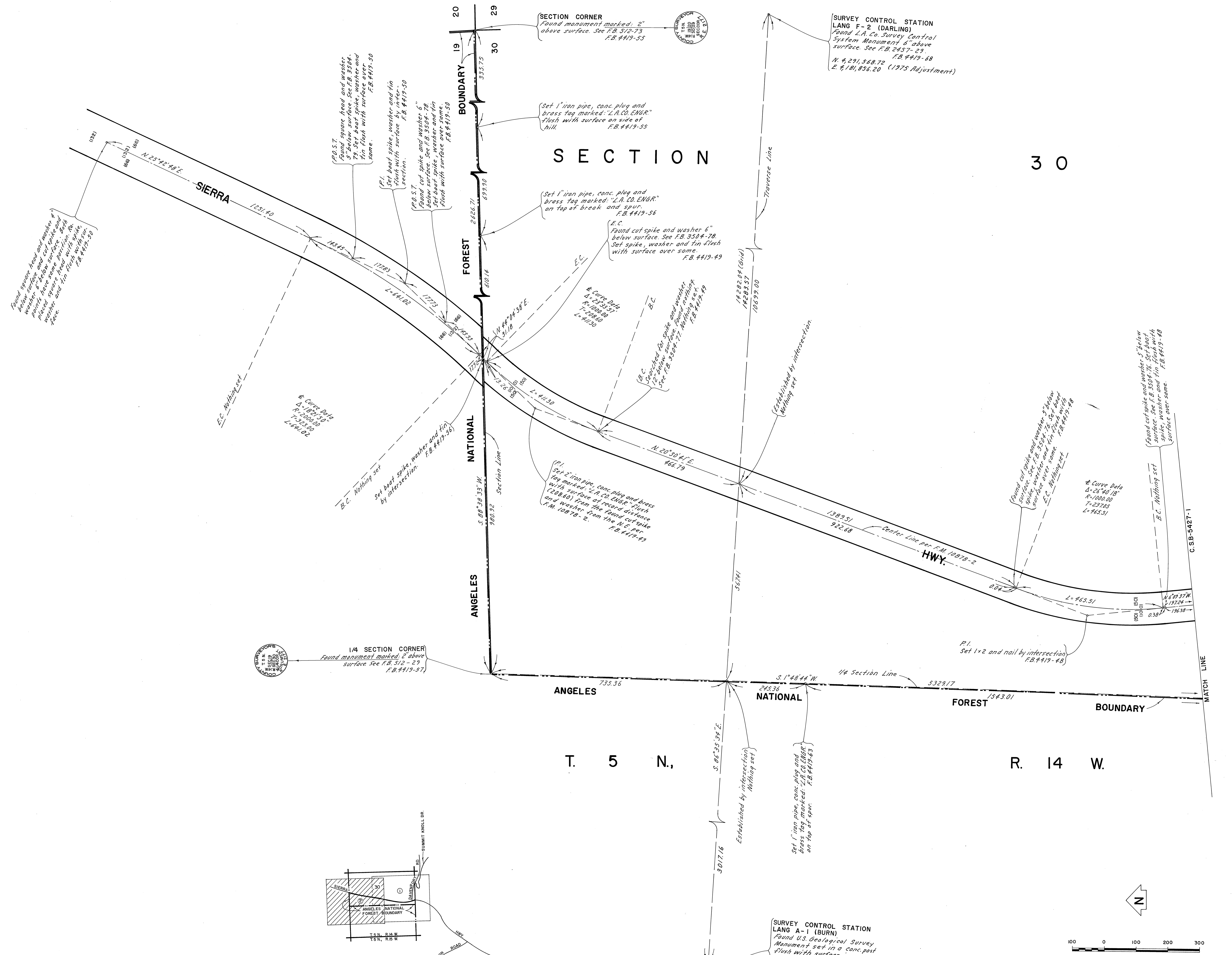


COUNTY OF LOS ANGELES DEPARTMENT OF COUNTY ENGINEER-FACILITIES STEPHEN J. KOONCE-COUNTY ENGINEER PREPARED BY SURVEY DIVISION RICHARD J. MITCHELL ASSISTANT DEPUTY COUNTY ENGINEER SURVEYED BY W.E. WACKER CHECKED BY L.F. RAMOS DRAWN BY G. MASUDA	ALIGNMENT MAP OF SIERRA HIGHWAY FROM SOUTH LINE TO NORTH LINE OF SECTION 30, T.5N. R.14W, S.B.M. BASIS OF BEARINGS CALIFORNIA COORDINATE SYSTEM, ZONE 7		COUNTY SURVEYOR'S MAP NO. B-5427 SHEET 1 OF 2 SHEETS FILED: <i>November 18, 1982</i> DEPUTY COUNTY SURVEYOR JANUARY 1982 REFERENCE F.B. 4419	REVISION NO. BY DATE
	JOB NUMBER: 0222.37		INDEX MAP NO. 78	

C-2-B-2451-1

SECTION

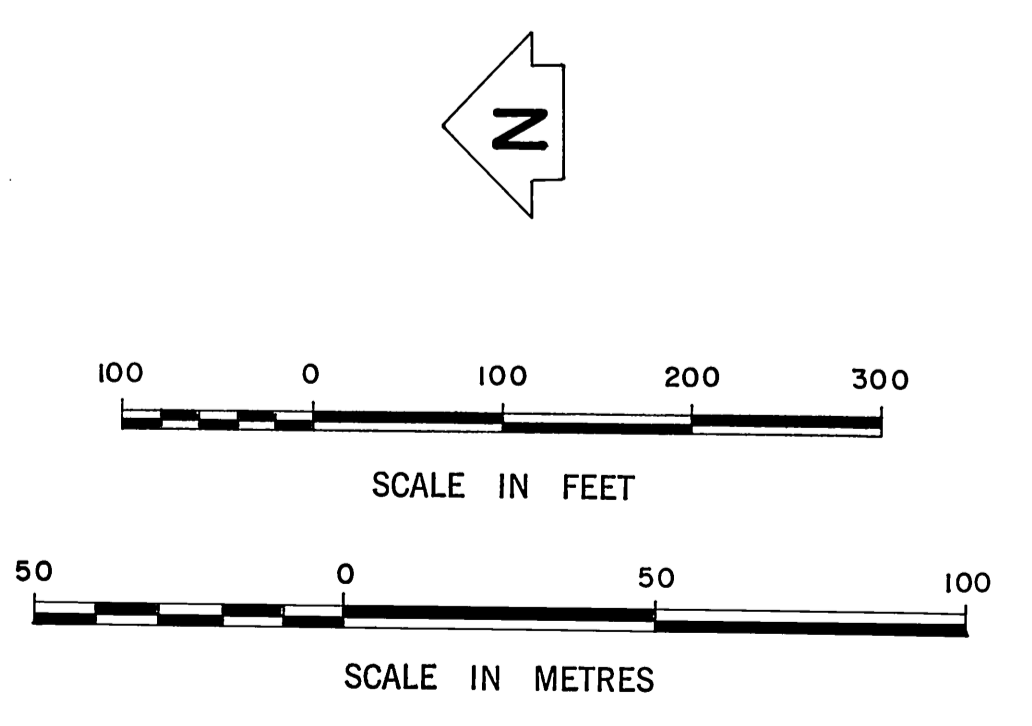
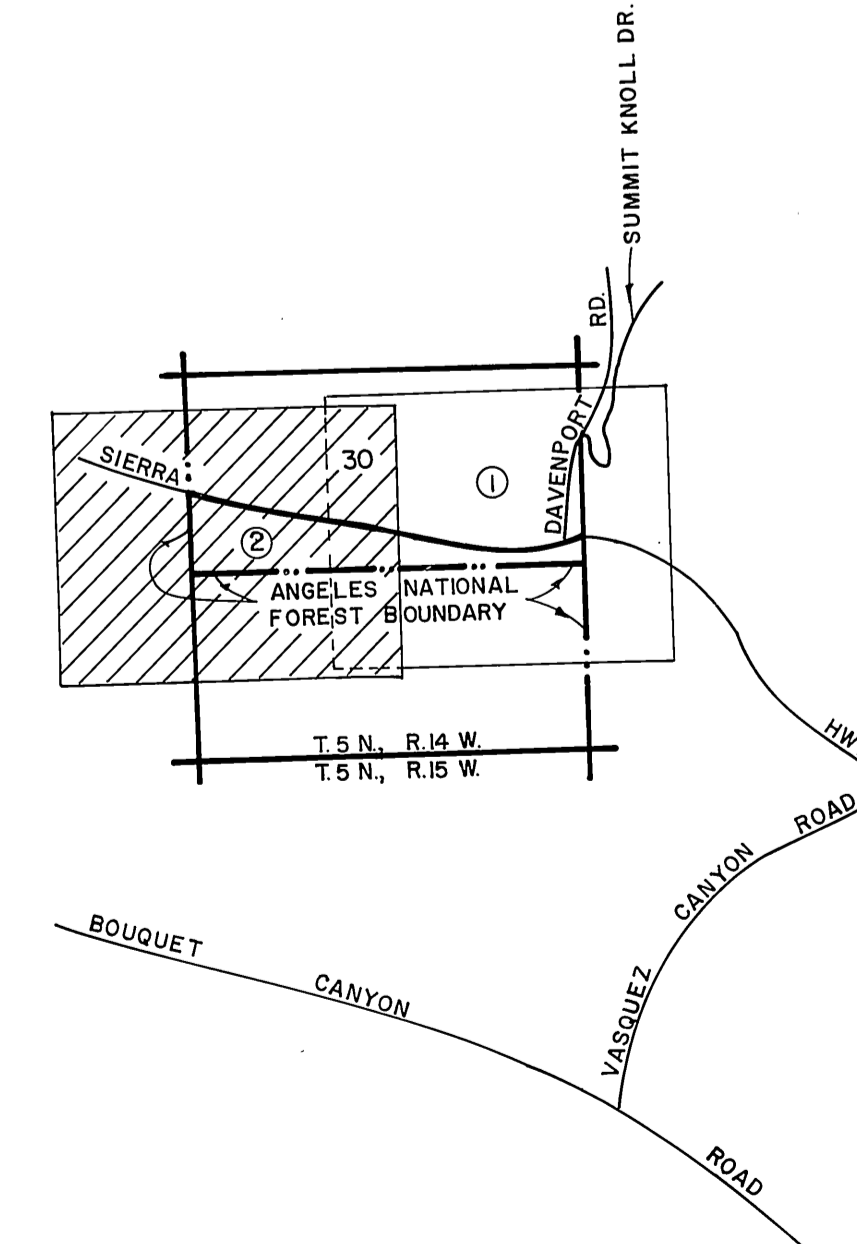
30



1/4 SECTION CORNER
 Found monument marked 2" above surface. See F.B. 512-29
 F.B. 4419-57

SURVEY CONTROL STATION
 LANG F-2 (DARLING)
 Found L.A. Co. Survey Control System Monument 6' above surface. See F.B. 2457-29
 F.B. 4419-68
 N. 4, 291, 568.72
 E. 4, 181, 856.20 (1975 Adjustment)

SURVEY CONTROL STATION
 LANG A-1 (BURN)
 Found U.S. Geological Survey Monument set in a conc. post flush with surface in a rock outcrop. See F.B. 2457-51 & 193
 F.B. 4419-67
 N. 4, 292, 917.56 (1975 Adjustment)
 E. 4, 167, 599.26



COUNTY OF LOS ANGELES DEPARTMENT OF COUNTY ENGINEER-FACILITIES STEPHEN J. KOONCE-COUNTY ENGINEER PREPARED BY SURVEY DIVISION RICHARD J. MITCHELL ASSISTANT DEPUTY COUNTY ENGINEER SURVEYED BY W.E. WACKER CHECKED BY L.F. RAMOS DRAWN BY G. MASUDA		ALIGNMENT MAP OF SIERRA HIGHWAY FROM SOUTH LINE TO NORTH LINE OF SECTION 30, T.5N., R.14W., S.B.M. BASIS OF BEARINGS CALIFORNIA COORDINATE SYSTEM, ZONE 7		COUNTY SURVEYOR'S MAP NO. B-5427 SHEET 2 OF 2 SHEETS FILED: <i>November 10, 1982</i> <i>By [Signature]</i> DEPUTY SURVEYED JANUARY 1982 REFERENCE F.B. 4419 JOB NUMBER 0222.37 INDEX MAP NO. 78		REVISION NO. BY DATE	
--	--	--	--	---	--	-------------------------	--