

C.2. B-2430-1

TECHNICAL NOTES

PURPOSE

1 THIS MAP IS FILED IN COMPLIANCE WITH SECTION 8765 OF THE CALIFORNIA LAND SURVEYORS ACT FOR THE PURPOSE OF SHOWING MEASUREMENTS MADE AND MONUMENTS RECOVERED AND SET IN SECTION 16, TOWNSHIP 4 NORTH, RANGE 10 WEST, SBM, BY THE COUNTY ENGINEER AND TO SHOW THE VARIOUS LOTTINGS WITHIN THE SECTION WITH RESPECT TO THE 1979 BUREAU OF LAND MANAGEMENT RESURVEY (SEE NOTE 8). THIS SURVEY HAS BEEN ACCEPTED BY THE COUNTY ENGINEER AS INDICATING THE TRUE LOCATION OF ALL CORNERS SHOWN THEREON. THE RULES FOR THE "SUBDIVISION OF SECTIONS" ARE GIVEN IN SECTIONS 9-74 TO 9-92 OF THE MANUAL OF SURVEYING INSTRUCTIONS 1973 AS PUBLISHED BY THE U.S. BUREAU OF LAND MANAGEMENT AND HAVE BEEN ADHERED TO IN ALL CASES.

2. COUNTY SURVEYOR MAP NO. B-5326 IS HEREBY SUPERSEDED AS IS ALSO THAT PORTION OF C.S. MAP NO. B-5423 SHOWING THE SECTION LINES BETWEEN SECTIONS 16 AND 17 AND BETWEEN SECTIONS 20 AND 21

HISTORY

3. SECTION 16 WAS FIRST SURVEYED BY AN UNNAMED "U.S. SURVEYOR" IN NOVEMBER, 1912 AND IS SHOWN ON THE TOWNSHIP PLAT APPROVED BY THE U.S. SURVEYOR GENERAL FOR CALIFORNIA IN DECEMBER, 1917. THE FIELD NOTES OF THAT SURVEY HAVE BEEN TRANSCRIBED AND ARE FILED IN THE OFFICE OF THE COUNTY SURVEYOR AS CS 9178 AND CS 9320.

4. BETWEEN JAN., 1932 AND SEPT., 1933 THE COUNTY SURVEYOR RETRACED THE BOUNDARY OF THE ANGELES NATIONAL FOREST. IN SECTION 16 NO EVIDENCE WAS FOUND OF THE MONUMENTS ORIGINALLY SET TO MARK EITHER THE SOUTH OR WEST 1/4 CORNER OR THE SOUTHWEST SECTION CORNER. MONUMENT NO. J-249 WAS SET AS SHOWN ON COUNTY SURVEYOR MAP NO. B-745 TO FACILITATE FOREST MANAGEMENT.

5. THE NEXT SURVEY KNOWN TO HAVE BEEN MADE IN SECTION 16 IS SHOWN ON AN UNRECORDED MAP OF A SURVEY MADE BY H. G. FELBER IN 1952. MR. FELBER'S MAP INDICATES THAT HE DID NOT FIND THE GENERAL LAND OFFICE (GLO) MONUMENTS MARKING THE SOUTH OR WEST 1/4 CORNER OF THE SECTION NOR DOES IT INDICATE THAT HE RE-ESTABLISHED THEM IN THEIR PROPER LOCATION.

6. IN 1953 RECORD OF SURVEY NO. 70-13 MADE BY JAMES O. BENNETT WAS RECORDED IN THE OFFICE OF THE COUNTY RECORDER. MR. BENNETT'S MAP INDICATES THAT HE DID NOT LOCATE THE GLO MONUMENTS MARKING THE SOUTH AND WEST 1/4 CORNERS OF THE SECTION. THE COUNTY SURVEYOR REJECTED MR. BENNETT'S METHOD OF ESTABLISHMENT OF THE LINES SHOWN AND ANNOTATED THE MAP AS REQUIRED BY SECTION 8768 OF THE LAND SURVEYORS ACT.

7. IN 1973 THE COUNTY SURVEYOR MADE A DETAILED SEARCH FOR THE SOUTHWEST CORNER OF THE SECTION. HE IDENTIFIED THE CORNER AS "OBLITERATED". HE RE-ESTABLISHED THE CORNER IN ACCORD WITH SECTION 5-16 OF THE MANUAL OF SURVEYING INSTRUCTIONS 1973, AND FILED COUNTY SURVEYOR MAP B-5326. (SEE NOTE 2)

8. IN JULY AND AUGUST, 1979, THE UNITED STATES BUREAU OF LAND MANAGEMENT MADE A DEPENDENT RESURVEY OF SECTION 16. THE RESURVEY DETERMINED THE SOUTHWEST CORNER TO BE "LOST", AND RE-ESTABLISHED ITS POSITION IN ACCORD WITH SECTION 5-28 OF THE MANUAL. THE POSITION OF THE SOUTH 1/4 CORNER WAS ESTABLISHED. IN ACCORD WITH SECTION 5-38, THE MONUMENT "J-249" WAS ACCEPTED AS THE WEST 1/4 CORNER.

9. AT VARIOUS TIMES THE COUNTY SURVEYOR HAS MADE OTHER MEASUREMENTS TO RELATE THE VARIOUS SURVEYS AND THEIR MONUMENTS TO THE CALIFORNIA COORDINATE SYSTEM AS DEFINED IN SECTION 8800 TO SECTION 8816 OF THE PUBLIC RESOURCES CODE.

STEPHEN J. KOONCE
COUNTY ENGINEER
BY: *R. Mitchell*
R. MITCHELL
DEPUTY
JULY 2, 1982

NOTE:
HARRY G. FELBER IS LS-2424
JAMES O. BENNETT IS LS-2408
JAMES S. COATES IS LS-2991

THE FIELD NOTES OF THE 1979 BUREAU OF LAND MANAGEMENT SURVEY ARE FILED IN THE OFFICE OF THE CO. ENGR. AS "C.S. 9467"

1 SURVEY CONTROL STATION CIMA MESA G-7. A L.A. CO. SURVEY CONTROL SYSTEM MONUMENT. N.4,275,010.33 E.4,304,421.24 (1970 ADJUSTMENT) F.B.1676-264

2 SURVEY CONTROL STATION CIMA MESA G-10 (VIEW). A L.A. CO. SURVEY CONTROL SYSTEM MONUMENT. N.4,266,483.53 E.4,304,648.12 (1970 ADJUSTMENT) F.B.1672-64

3 SET 1"x2" STAKE AND NAIL. F.B.1676-255,264

4 SET 1"x2" STAKE AND NAIL FLUSH WITH SURFACE. F.B.1676-259

5 SECTION CORNER. FOUND COUNTY SURVEYORS MONUMENT 6" ABOVE SURFACE. SEE F.B.78-33, F.B.3212-168 F.B.4343-177

6 1/4 SECTION CORNER. FOUND COUNTY ENGINEER MONUMENT FLUSH WITH SURFACE. SEE F.B.3212-178, F.B.1676-259 F.B.4343-177,186

7 SECTION CORNER. FOUND A G.L.O. MONUMENT 8" ABOVE SURFACE. SEE C.S.8735, F.B.1262-167, F.B.2637-162 F.B.3212-179

8 1/4 SECTION CORNER. FOUND A G.L.O. MONUMENT 6" BELOW SURFACE. SEE C.S.8735, F.B.78-128, F.B.3212-180 F.B.4343-20

9 1/4 SECTION CORNER. FOUND A G.L.O. MONUMENT 8" BELOW SURFACE. SEE C.S.8735, F.B.78-128, F.B.1676-263 F.B.4343-164,173

10 1/4 SECTION CORNER. FOUND A G.L.O. SURVEY MONUMENT. SEE C.S.9467 F.B.4343-164,173

11 1/16 SECTION CORNER. FOUND A U.S. DEPT. OF THE INTERIOR, BUREAU OF LAND MANAGEMENT MONUMENT. SEE C.S.9467 F.B.4343-164

12 SECTION CORNER. FOUND COUNTY SURVEYORS MONUMENT 8" ABOVE SURFACE. SEE F.B.78-125, F.B.1676-263 F.B.4343-163

13 SECTION CORNER. FOUND COUNTY SURVEYORS MONUMENT 6" ABOVE SURFACE. SEE F.B.78-125, F.B.1676-262 F.B.4343-163

14 1/16 SECTION CORNER. FOUND U.S. DEPT. OF THE INTERIOR, BUREAU OF LAND MANAGEMENT MONUMENT IN A ROCK MOUND. SEE C.S.9467 F.B.4343-165

15 1/4 SECTION CORNER. FOUND U.S. DEPT. OF THE INTERIOR, BUREAU OF LAND MANAGEMENT MONUMENT IN A ROCK MOUND. SEE C.S.9467 F.B.4343-16

16 CENTER OF SECTION. FOUND U.S. DEPT. OF THE INTERIOR, BUREAU OF LAND MANAGEMENT MONUMENT IN A ROCK MOUND. SEE C.S.9467 F.B.4343-176

17 1/4 SECTION CORNER. FOUND COUNTY SURVEYORS MONUMENT FLUSH WITH SURFACE. SEE F.B.438-170, F.B.1676-258 F.B.4343-176

18 SECTION CORNER. FOUND U.S. DEPARTMENT OF THE INTERIOR, BUREAU OF LAND MANAGEMENT MONUMENT IN A ROCK MOUND. SEE C.S.9467 F.B.4343-166

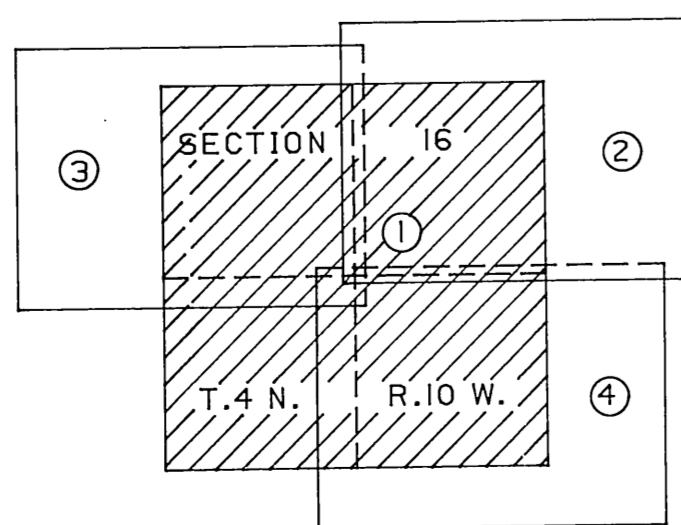
19 1/16 SECTION CORNER. FOUND U.S. DEPT. OF THE INTERIOR, BUREAU OF LAND MANAGEMENT MONUMENT IN A ROCK MOUND. SEE C.S.9467 F.B.4343-178

20 1/16 SECTION CORNER. FOUND U.S. DEPT. OF THE INTERIOR, BUREAU OF LAND MANAGEMENT MONUMENT IN A ROCK MOUND. SEE C.S.9467 F.B.4343-176

21 1/16 SECTION CORNER. FOUND U.S. DEPT. OF THE INTERIOR, BUREAU OF LAND MANAGEMENT MONUMENT IN A ROCK MOUND. SEE C.S.9467 F.B.4343-175

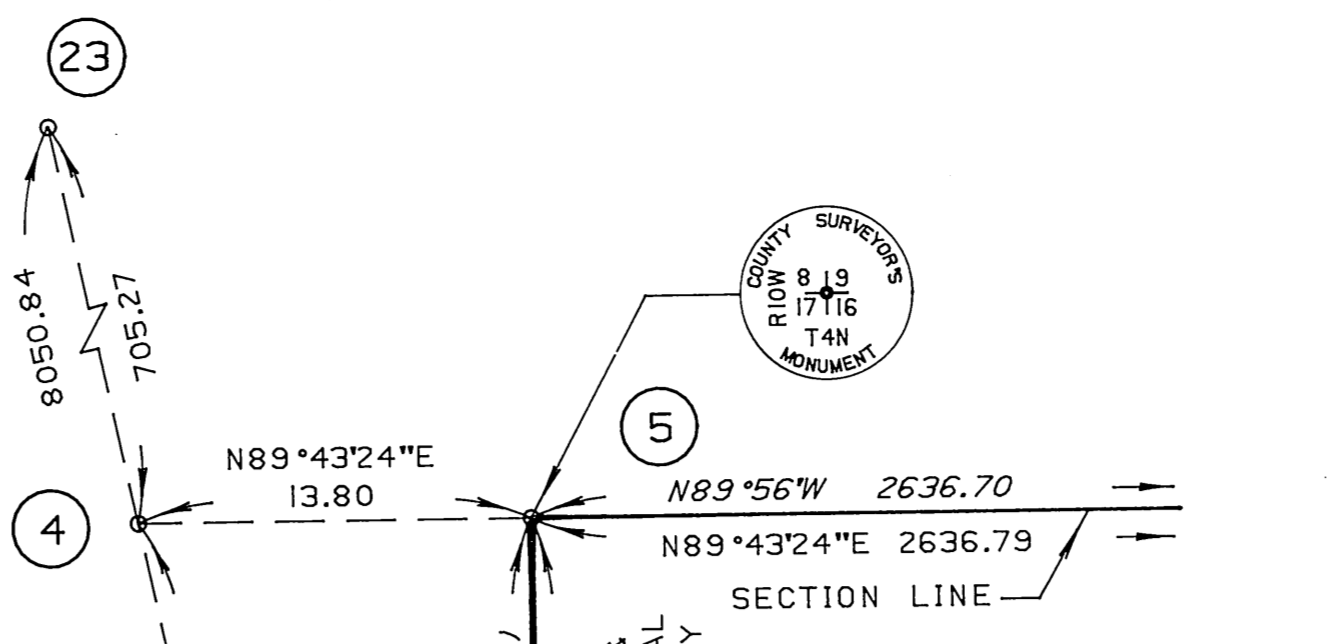
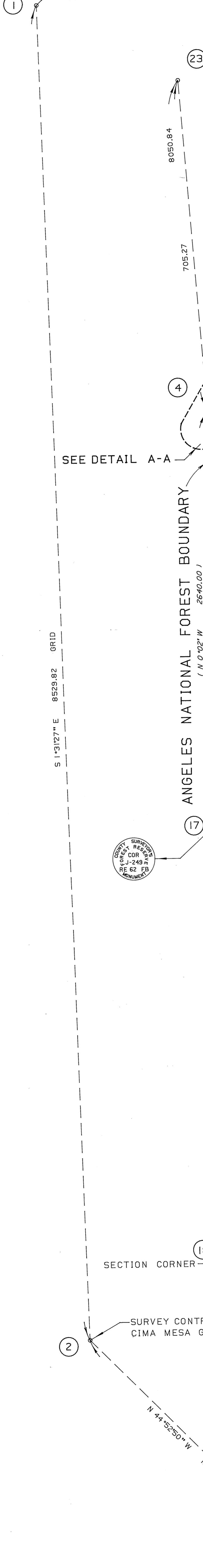
22 1/64 SECTION CORNER. FOUND U.S. DEPT. OF THE INTERIOR, BUREAU OF LAND MANAGEMENT MONUMENT IN A ROCK MOUND. SEE C.S.9467 F.B.4343-175

23 SET 1"x2" STAKE AND NAIL. F.B.1676-259



INDEX MAP NOT TO SCALE

1 SURVEY CONTROL STATION CIMA MESA G-7



DETAIL A-A (NO SCALE)

SECTION 16 T 4 N R 10 W

SECTION 16

FOR N.W. 1/4 SEE C.S.B-5430-3

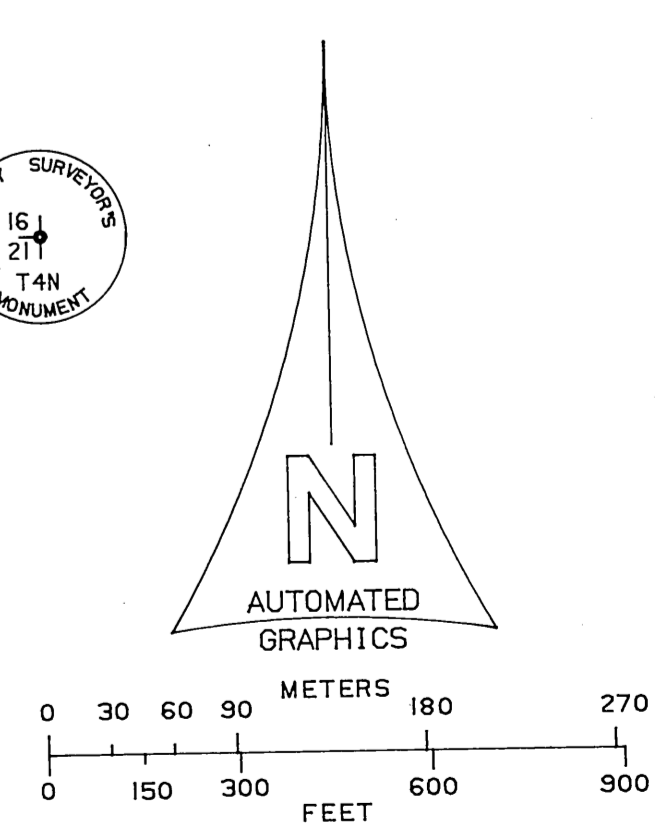
T 4 N R 10 W

UNPATENTED LANDS OF THE UNITED STATES

CENTER OF SECTION

ANGELES NATIONAL FOREST BOUNDARY

FOR S.E. 1/4 SEE C.S.B-5430-4

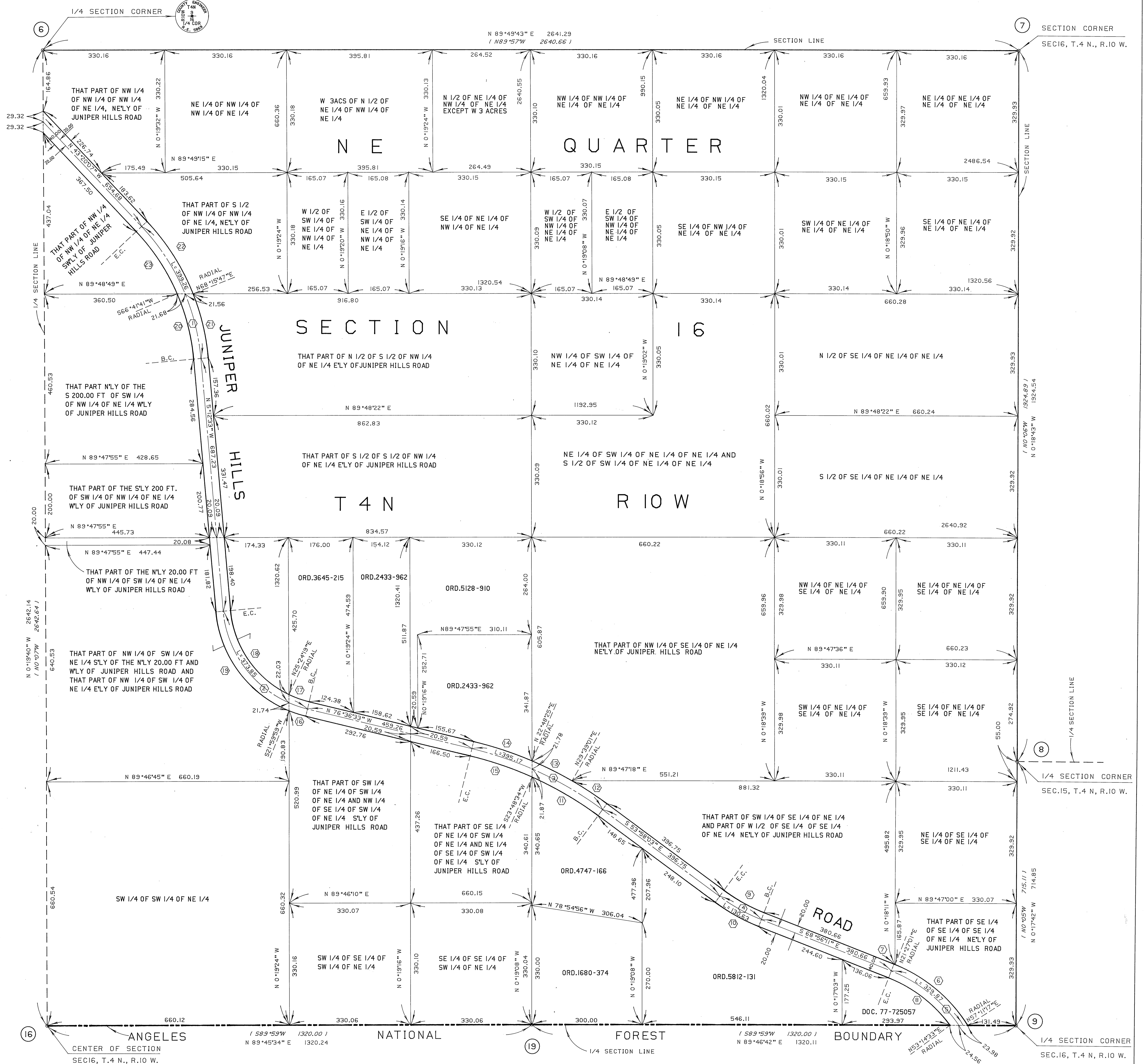


NOTE: SLANT LETTERING DENOTES RECORD BEARING AND DISTANCE PER TOWNSHIP PLAT ACCEPTED FOR THE DIRECTOR OF THE BUREAU OF LAND MANAGEMENT ON SEPTEMBER 19, 1979 BY G. VOORHEES, CHIEF, CADASTRAL SURVEY EXAMINATION AND APPROVAL STAFF.

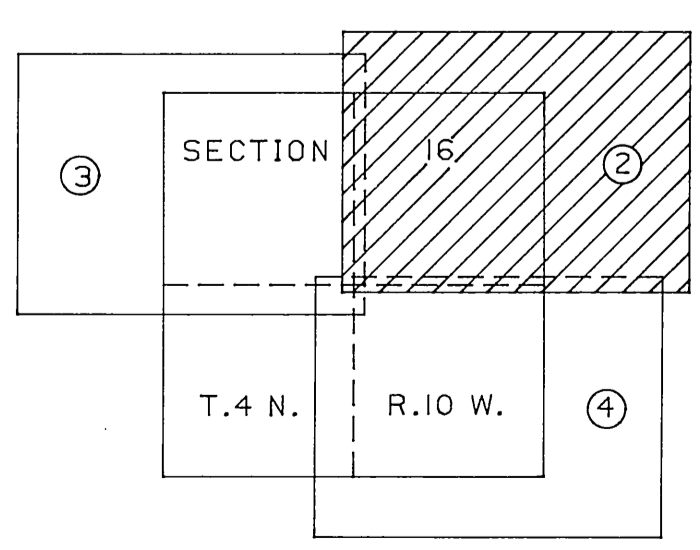
Table with 4 columns: COUNTY SURVEYOR'S MAP NO. (B-5430), SHEET 1 OF 4 SHEETS, FILED: November 24, 1982, DEPT. OF COUNTY ENGINEER-FACILITIES, SURVEY DIVISION, PREPARED BY: RICHARD J. MITCHELL, ASSISTANT DEPUTY COUNTY ENGINEER, SURVEYED BY: J.C. PIERCE, CHECKED BY: R. BARTHOLOMEW, DRAWN BY: E. FONG, MAP OF SECTION 16 T.4 N. R.10 W., BASIS OF BEARINGS CALIFORNIA COORDINATE SYSTEM, ZONE 7, COUNTY SURVEYOR'S MAP NO. B-5430, SHEET 1 OF 4 SHEETS, FILED: November 24, 1982, DEPT. OF COUNTY ENGINEER-FACILITIES, SURVEY DIVISION, PREPARED BY: RICHARD J. MITCHELL, ASSISTANT DEPUTY COUNTY ENGINEER, SURVEYED BY: J.C. PIERCE, CHECKED BY: R. BARTHOLOMEW, DRAWN BY: E. FONG, REFERENCE F.B.4343 F.B.3212, JOB NUMBER 0302.01, INDEX MAP NO 81, REVISION NO BY DATE.

C.2. B-2430-1

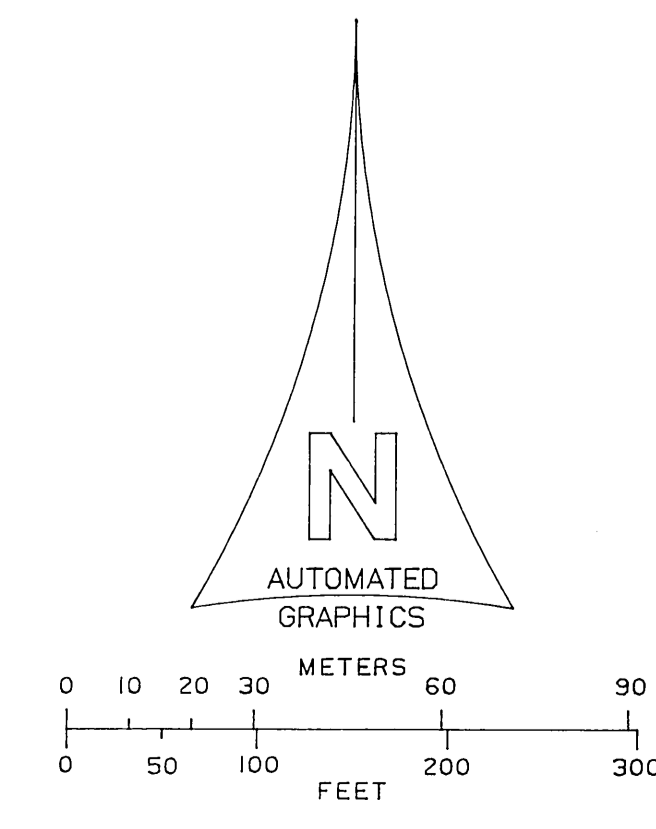
- ⑥ 1/4 SECTION CORNER, FOUND COUNTY ENGINEER MONUMENT FLUSH WITH SURFACE. SEE F.B.3212-178, F.B.1676-259 F.B.4343-177,186
- ⑦ SECTION CORNER, A G.L.O. MONUMENT 8" ABOVE THE SURFACE. SEE C.S.8735, F.B.1262-167, F.B.2637-162 F.B.3212-179
- ⑧ 1/4 SECTION CORNER, A G.L.O. MONUMENT 6" BELOW SURFACE. SEE C.S.8735, F.B.78-128, F.B.3212-180, F.B.4343-20
- ⑨ 1/4 SECTION CORNER, FOUND A G.L.O. MONUMENT 8" BELOW SURFACE. SEE C.S.8735, F.B.78-1228, F.B.1676-263 F.B.4343-164,173
- ⑩ CENTER OF SECTION, FOUND U.S. DEPT. OF THE INTERIOR, BUREAU OF LAND MANAGEMENT MONUMENT IN A ROCK MOUND. SEE C.S.9467 F.B.4343-176
- ⑪ 1/16 SECTION CORNER, FOUND U.S. DEPT. OF THE INTERIOR, BUREAU OF LAND MANAGEMENT MONUMENT IN A ROCK MOUND. SEE C.S.9467 F.B.4343-178



NO	Δ	R	T	L
1	38°07'34"	600.00	207.34	399.26
2	71°24'00"	300.00	215.57	373.85
3	22°38'30"	1000.00	200.20	395.17
4	14°58'08"	500.00	65.69	130.63
5	47°15'01"	400.00	174.97	329.87
6	35°44'16"	420.00		261.97
7	0°23'12"	420.00		2.83
8	32°10'44"	380.00		213.42
9	14°58'08"	480.00		125.40
10	14°58'08"	520.00		135.85
11	12°13'23"	980.00		209.07
12	6°22'56"	1020.00		113.62
13	6°50'36"	1020.00		121.83
14	9°24'58"	1020.00		167.63
15	10°25'07"	980.00		178.20
16	8°36'27"	320.00		48.07
17	12°00'52"	280.00		58.71
18	59°23'08"	280.00		290.21
19	62°47'33"	320.00		350.70
20	18°05'46"	580.00		183.19
21	16°31'40"	620.00		178.85
22	21°35'54"	620.00		233.72
23	20°01'48"	580.00		202.76



INDEX MAP NOT TO SCALE

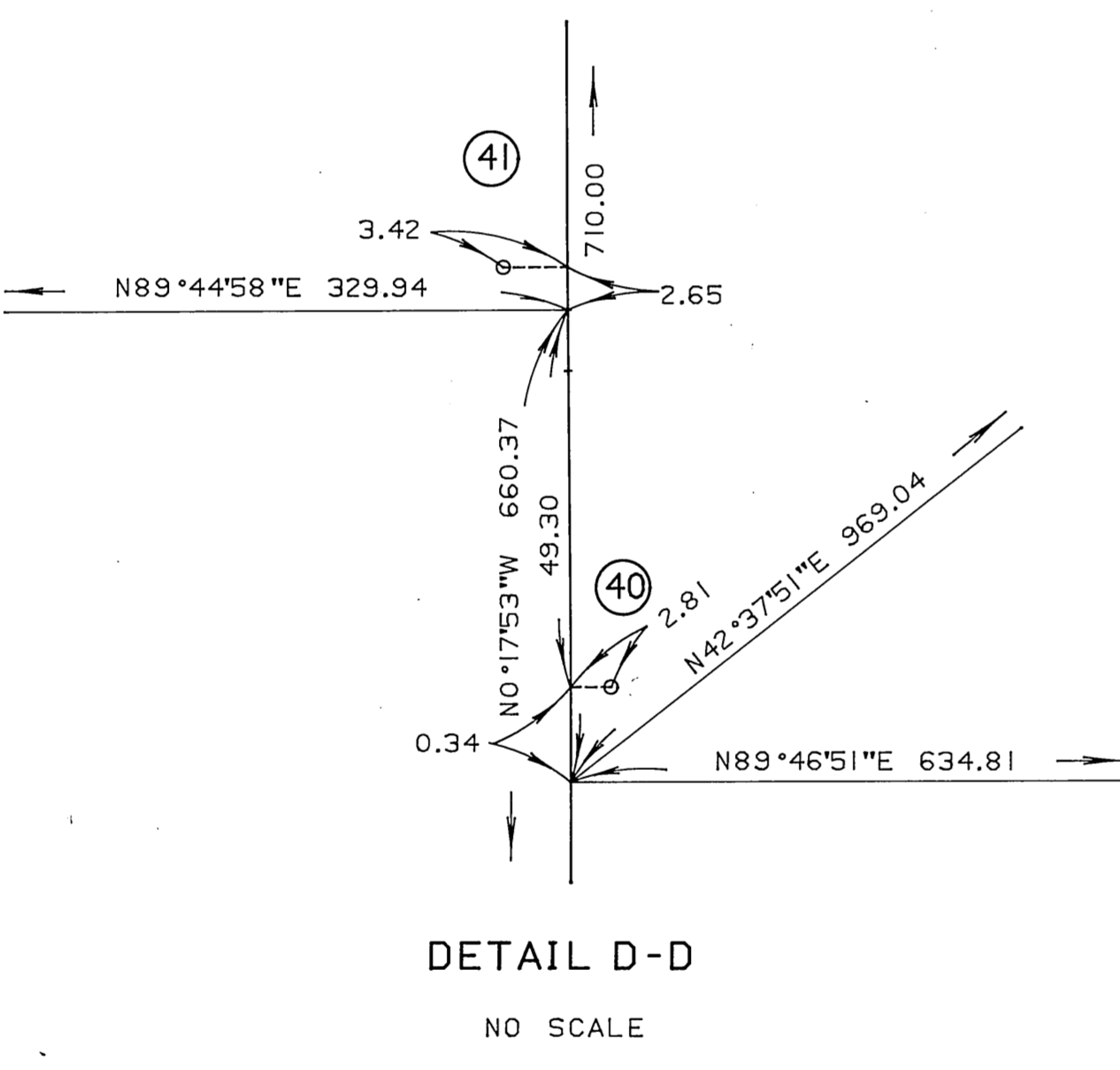
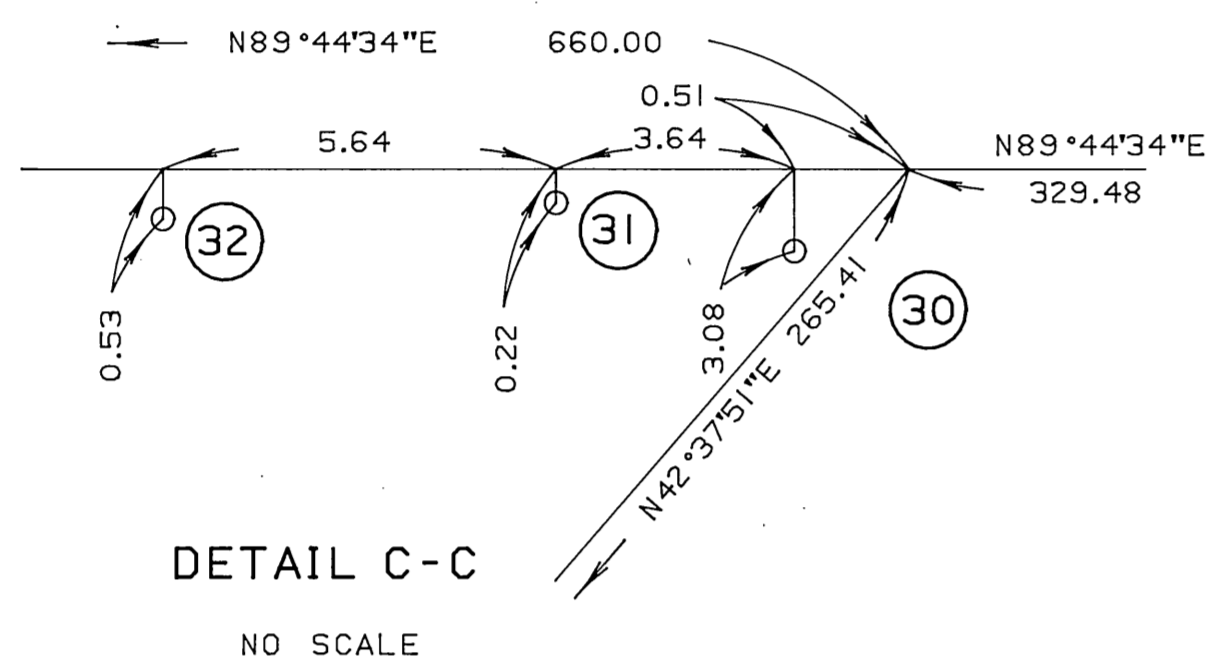
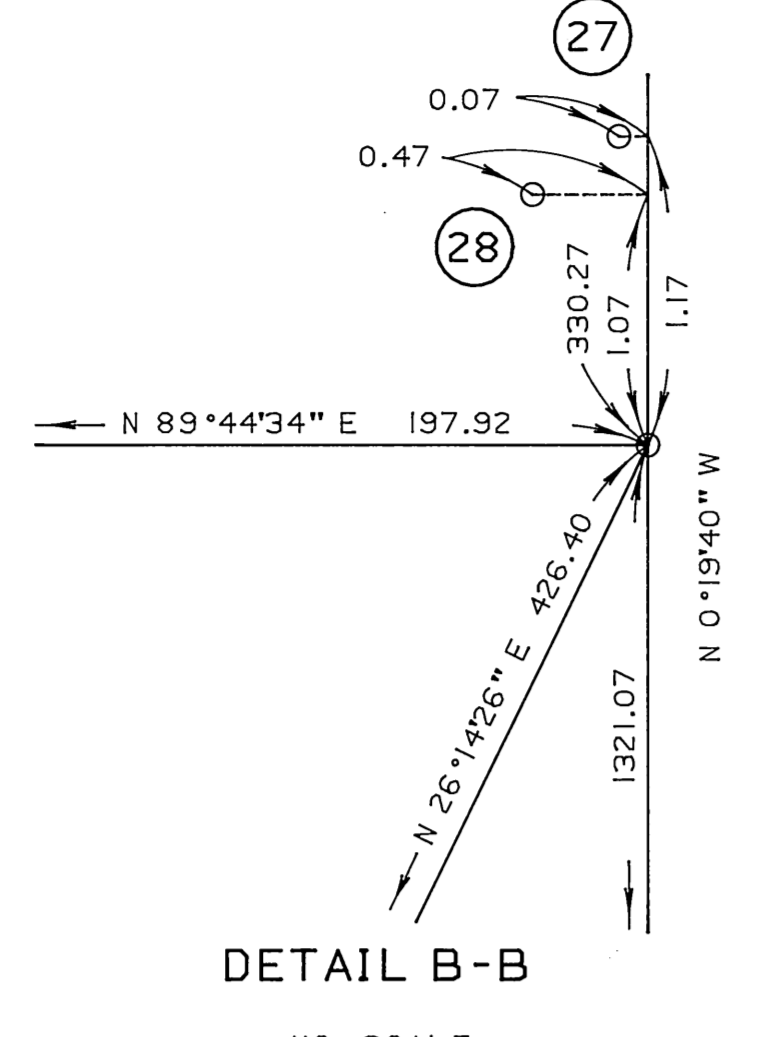


NOTE: SLANT LETTERING DENOTES RECORD BEARING AND DISTANCE PER TOWNSHIP PLAT ACCEPTED FOR THE DIRECTOR OF THE BUREAU OF LAND MANAGEMENT ON SEPTEMBER 19, 1979 BY G. VOORHEES, CHIEF, CADASTRAL SURVEY EXAMINATION AND APPROVAL STAFF.

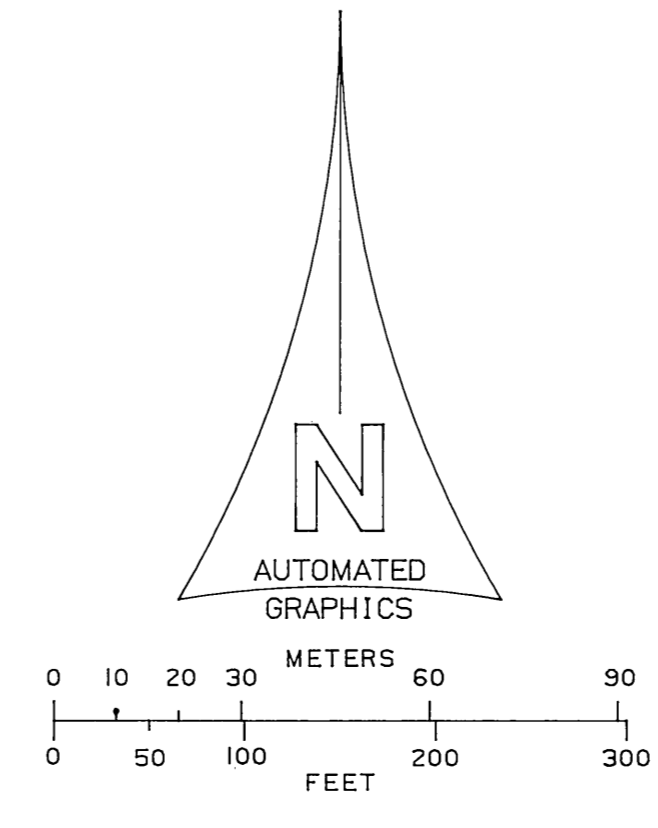
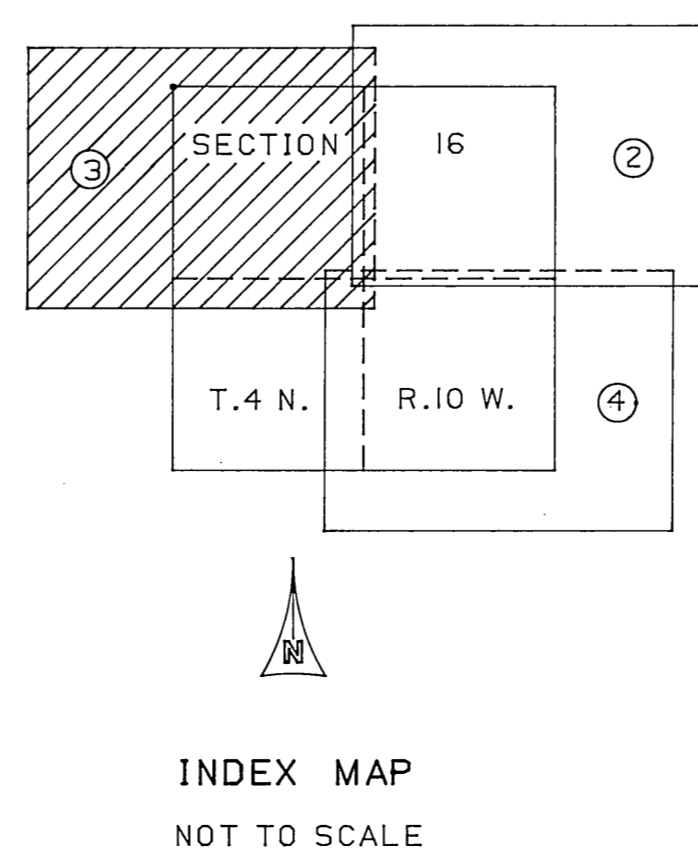
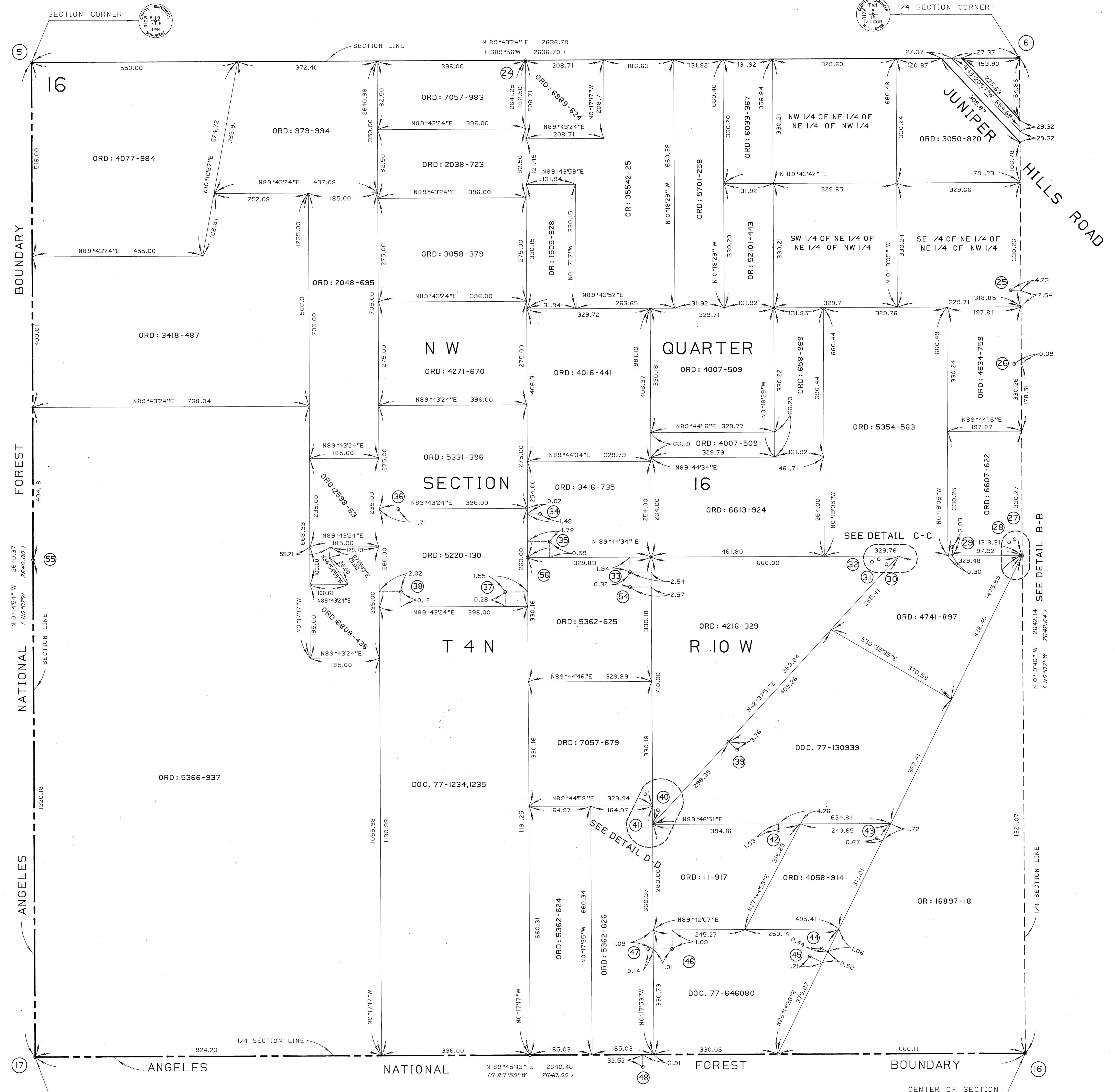
THE FIELD NOTES OF THE 1979 BUREAU OF LAND MANAGEMENT SURVEY ARE FILED IN THE OFFICE OF THE CO. ENGR. AS C.S.9467

COUNTY OF LOS ANGELES DEPARTMENT OF COUNTY ENGINEER-FACILITIES STEPHEN J. KOONCE-COUNTY ENGINEER PREPARED BY SURVEY DIVISION RICHARD J. MITCHELL ASSISTANT DEPUTY COUNTY ENGINEER SURVEYED BY - J.C. PIERCE CHECKED BY - R. BARTHOLOMEW DRAWN BY - E. FONG	MAP OF SECTION 16 T.4 N. R.10 W.		COUNTY SURVEYOR'S MAP NO B-5430 SHEET 2 OF 4 SHEETS FILED: <i>November 29, 1982</i> <i>R.J. Mitchell</i> DEPUTY SURVEYED MARCH 1977 TO JUNE 1980 REFERENCE F.B.4343 F.B.3212 JOB NUMBER 0302.01 INDEX MAP NO 81
	BASIS OF BEARINGS		
	CALIFORNIA COORDINATE SYSTEM, ZONE 7		
	REVISION NO. BY DATE		

- ⑤ SECTION CORNER, FOUND COUNTY SURVEYORS MONUMENT 6" ABOVE SURFACE. SEE F.B.78-33, F.B.3212-168 F.B.4343-177
- ⑥ 1/4 SECTION CORNER, FOUND COUNTY ENGINEER MONUMENT FLUSH WITH SURFACE. SEE F.B.3212-178, F.B.1676-259 F.B.4343-177,186
- ⑬ CENTER OF SECTION, FOUND U.S. DEPT. OF THE INTERIOR BUREAU OF LAND MANAGEMENT MONUMENT IN A ROCK MOUND. SEE C.S. 9467 F.B.4343-176
- ⑰ 1/4 SECTION CORNER, FOUND COUNTY SURVEYORS MONUMENT FLUSH WITH SURFACE. SEE F.B.488-170, F.B.1676-258 F.B.4343-176
- ⑳ 1/16 SECTION CORNER. A 1" IRON PIPE AND BRASS TAG MARKED "L.A. CO. ENGR" 6" BELOW SURFACE SEE F.B.2637-159 F.B.4343-10
- ㉑ FOUND 3/8" IRON PIPE 24" ABOVE SURFACE. NO REFERENCE. F.B.4343-11
- ㉒ FOUND 1" STEEL ROD 15" ABOVE SURFACE. NO REFERENCE. F.B.4343-12
- ㉓ FOUND REMAINS OF A 2"x2" STAKE. SET NAIL IN CENTER. SEE R.S.70-31 F.B.4343-12
- ㉔ A 1" IRON PIPE, CONCRETE PLUG AND BRASS TAG MARKED "L.A. CO. ENGR" FLUSH WITH SURFACE NO REFERENCE. F.B.4343-12,186
- ㉕ FOUND 2"x2" STAKE AND NAIL TAGGED L.S.2991 FLUSH WITH SURFACE. F.B.4343-15
- ㉖ A 1" IRON PIPE, CONCRETE PLUG AND BRASS TAG MARKED "L.A. CO. ENGR" FLUSH WITH SURFACE F.B.4343-15,187
- ㉗ FOUND ROTTED 2"x2" STAKE AND NAIL TAGGED L.S. 2991 FLUSH WITH SURFACE. F.B.4343-15
- ㉘ FOUND A 1" IRON PIPE, NO PLUG 9" ABOVE SURFACE. THIS POINT SHOWN TO MR. VOGEL BY MR. FINLEY LAVERY ON FEB.12,1982 AND IDENTIFIED BY MR LAVERY AS "THE ARMSTRONG CORNER" F.B.4343-187
- ㉙ FOUND 1/2" IRON PIPE, NO PLUG 3" ABOVE SURFACE. THIS POINT SHOWN TO MR. VOGEL BY MR. FINLEY LAVERY ON FEB.12,1982 F.B.4343-190
- ㉚ FOUND 2"x2" STAKE AND NAIL TAGGED L.S.2991. F.B.4343-19
- ㉛ FOUND 2"x2" STAKE AND NAIL TAGGED L.S.2991 F.B.4343-19
- ㉜ FOUND 2"x2" STAKE AND NAIL TAGGED L.S.2991 F.B.4343-19
- ㉝ FOUND 3/4" IRON PIPE AND NAIL TAGGED L.S.2991 3" BELOW SURFACE. F.B.4343-19
- ㉞ FOUND 2"x2" STAKE AND NAIL TAGGED L.S.2991 F.B.4343-19
- ㉟ FOUND REMAINS OF A 2"x2" STAKE. SET NAIL IN CENTER. SEE MAP MADE BY HARRY G FELBER. F.B.4343-15
- ㊱ A 1" IRON PIPE, CONCRETE PLUG AND BRASS TAG MARKED "L.A. CO. ENGR" FLUSH WITH SURFACE F.B.4343-16,188
- ㊲ FOUND 1" OD CONDUIT PIPE, NO PLUG 6" ABOVE SURFACE. THIS POINT SHOWN TO MR. VOGEL BY MR. FINLEY LAVERY ON FEB.12,1982 F.B.4343-188
- ㊳ FOUND 2"x2" STAKE AND NAIL 1" ABOVE SURFACE. F.B.4343-15
- ㊴ FOUND 2"x2" STAKE AND NAIL 5" ABOVE SURFACE. SEE MAP MADE BY HARRY G. FELBER. F.B.4343-13
- ㊵ FOUND 2"x2" STAKE AND NAIL 2" ABOVE SURFACE. SEE MAP MADE BY HARRY G. FELBER. F.B.4343-14
- ㊶ A 1" IRON PIPE, CONCRETE PLUG AND BRASS TAG MARKED "L.A. CO. ENGR." FLUSH WITH SURFACE F.B.4343-14
- ㊷ FOUND REMAINS OF A 2"x2" STAKE. SET NAIL IN CENTER. SEE R.S.70-31 F.B.4343-16
- ㊸ A 1" IRON PIPE, CONCRETE PLUG AND BRASS TAG MARKED "L.A. CO. ENGR." 2" ABOVE SURFACE F.B.4343-16
- ㊹ A 1" IRON PIPE, CONCRETE PLUG AND BRASS TAG MARKED "L.A. CO. ENGR" 2" ABOVE SURFACE F.B.4343-17
- ㊺ FOUND 2" X 2" STAKE AND GALVANIZED ROOFING NAIL 2" ABOVE SURFACE F.B.4343-190
- ㊻ 1/16 SECTION CORNER, ESTABLISHED BY PROPORTION, NOTHING SET
- ㊼ 1/16 SECTION CORNER, ESTABLISHED BY INTERSECTION, NOTHING SET

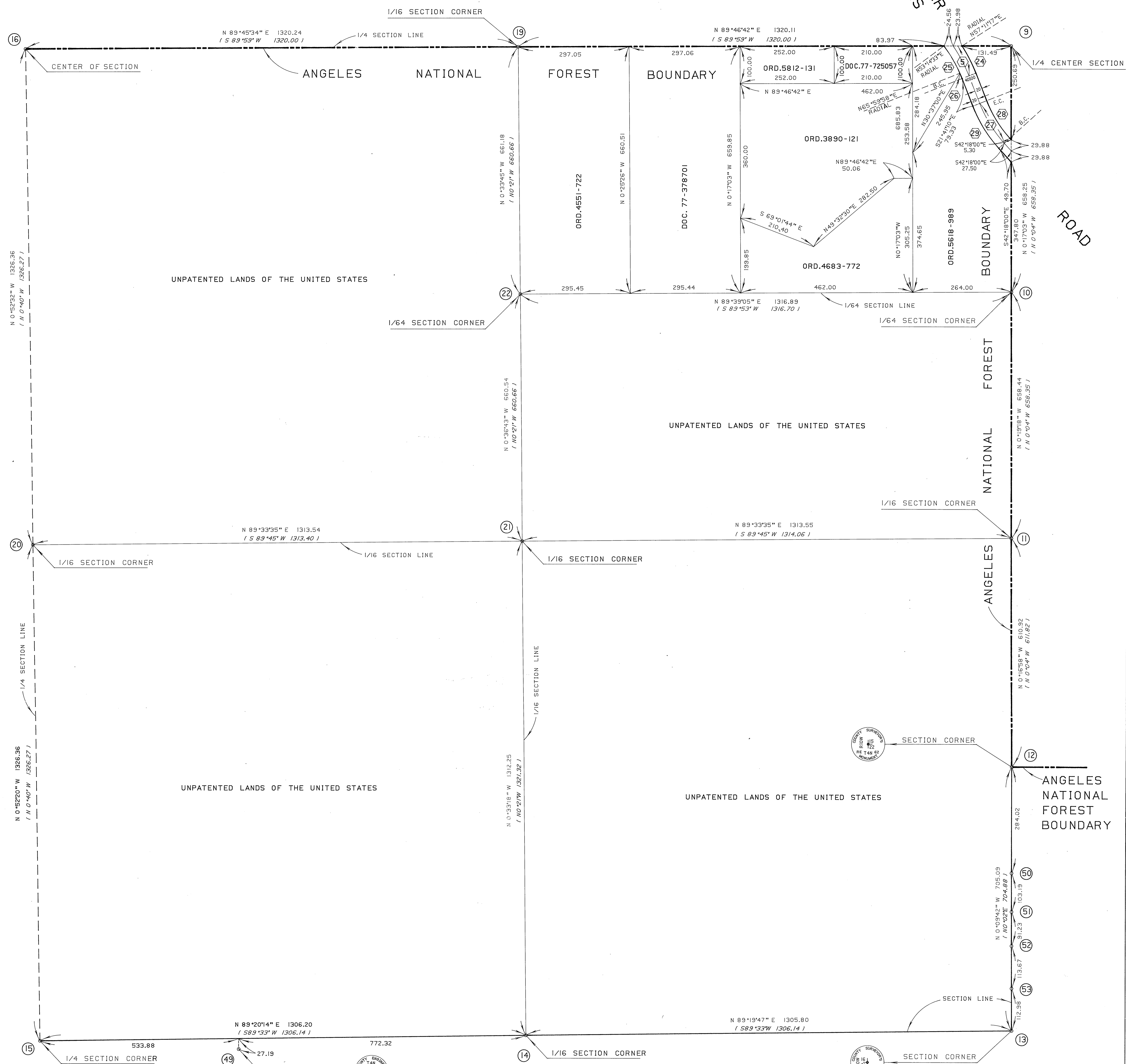


NOTE: SLANT LETTERING DENOTES RECORD BEARING AND DISTANCE PER TOWNSHIP PLAT ACCEPTED FOR THE DIRECTOR OF THE BUREAU OF LAND MANAGEMENT ON SEPTEMBER 19, 1979 BY G. VOORHEES, CHIEF OF CADASTRAL SURVEY EXAMINATION AND APPROVAL STAFF.

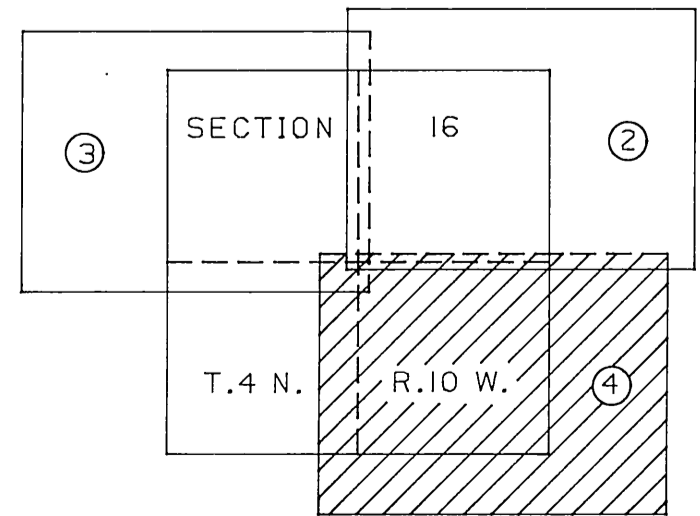


COUNTY OF LOS ANGELES DEPARTMENT OF COUNTY ENGINEER-FACILITIES STEPHEN J. KOONCE-COUNTY ENGINEER PREPARED BY SURVEY DIVISION RICHARD J. MITCHELL ASSISTANT DEPUTY COUNTY ENGINEER SURVEYED BY J.C.PIERCE CHECKED BY B.BARTHOLOMEW DRAWN BY E.FONG	MAP OF SECTION 16 T.4 N. R.10 W.		COUNTY SURVEYOR'S MAP NO B-5430 SHEET 3 OF 4 SHEETS FILED: <i>Bartholomew</i> , 1982 DEPUTY SURVEYED MARCH 1977 TO JUNE 1980 REFERENCE F.B.4343 F.B.3212	REVISION NO BY DATE
	BASIS OF BEARINGS CALIFORNIA COORDINATE SYSTEM, ZONE 7			JOB NUMBER 0302.01
	INDEX MAP NO 81			DATE
	COUNTY SURVEYOR'S MAP NO B-5430 SHEET 3 OF 4 SHEETS			

- ③ 1/4 SECTION CORNER. FOUND A G.L.O. MONUMENT 8" BELOW SURFACE. SEE C.S.8735, F.B.78-128, F.B.1676-263
F.B.4343-164,173
- ④ 1/64 SECTION CORNER. FOUND U.S. GOVERNMENT LAND OFFICE SURVEY MONUMENT. SEE C.S.9467
F.B.4343-164,173
- ⑤ 1/16 SECTION CORNER. FOUND U.S. DEPT. OF THE INTERIOR BUREAU OF LAND MANAGEMENT MONUMENT. SEE C.S.9467
F.B.4343-164
- ⑥ SECTION CORNER. FOUND COUNTY SURVEYORS MONUMENT 8" ABOVE SURFACE. SEE F.B.78-125, F.B.1676-263
F.B.4343-163
- ⑦ SECTION CORNER. FOUND COUNTY SURVEYORS MONUMENT 6" ABOVE SURFACE. SEE F.B.78-125, F.B.1676-262
F.B.4343-163
- ⑧ 1/16 SECTION CORNER. FOUND U.S. DEPT. OF THE INTERIOR BUREAU OF LAND MANAGEMENT MONUMENT IN A ROCK MOUND. SEE C.S.9467
F.B.4343-165
- ⑨ 1/4 SECTION CORNER. FOUND U.S. DEPT. OF THE INTERIOR BUREAU OF LAND MANAGEMENT MONUMENT IN A ROCK MOUND. SEE C.S.9467
F.B.4343-16
- ⑩ CENTER OF SECTION. FOUND U.S. DEPT. OF THE INTERIOR BUREAU OF LAND MANAGEMENT MONUMENT IN A ROCK MOUND. SEE C.S.9467
F.B.4343-176
- ⑪ 1/16 SECTION CORNER. FOUND U.S. DEPT. OF THE INTERIOR BUREAU OF LAND MANAGEMENT MONUMENT IN A ROCK MOUND. SEE C.S.9467
F.B.4343-178
- ⑫ 1/16 SECTION CORNER. FOUND U.S. DEPT. OF THE INTERIOR BUREAU OF LAND MANAGEMENT MONUMENT IN A ROCK MOUND. SEE C.S.9467
F.B.4343-176
- ⑬ 1/16 SECTION CORNER. FOUND U.S. DEPT. OF THE INTERIOR BUREAU OF LAND MANAGEMENT MONUMENT IN A ROCK MOUND. SEE C.S.9467
F.B.4343-175
- ⑭ 1/64 SECTION CORNER. FOUND U.S. DEPT. OF THE INTERIOR BUREAU OF LAND MANAGEMENT MONUMENT IN A ROCK MOUND. SEE C.S.9467
F.B.4343-175
- ⑮ WITNESS CORNER. FOUND COUNTY ENGINEER MONUMENT FLUSH WITH SURFACE. SEE F.B.1676-262. STAMPED W.C. ON MONUMENT S-9-1980.
F.B.4343-165
- ⑯ FOUND 1" IRON PIPE, CONCRETE PLUG AND BRASS TAG MARKED "L.A. CO. ENGR." 1" BELOW SURFACE SEE F.B.1676-263
F.B.4343-163
- ⑰ FOUND 1" IRON PIPE, CONCRETE PLUG AND BRASS TAG MARKED "L.A. CO. ENGR." 1" BELOW SURFACE SEE F.B.1676-263
F.B.4343-163
- ⑱ FOUND 1" IRON PIPE, CONCRETE PLUG AND BRASS TAG MARKED "L.A. CO. ENGR." 1" BELOW SURFACE SEE F.B.1676-263
F.B.4343-163
- ⑳ FOUND 1" IRON PIPE, CONCRETE PLUG AND BRASS TAG MARKED "L.A. CO. ENGR." 1" BELOW SURFACE SEE F.B.1676-263
F.B.4343-163



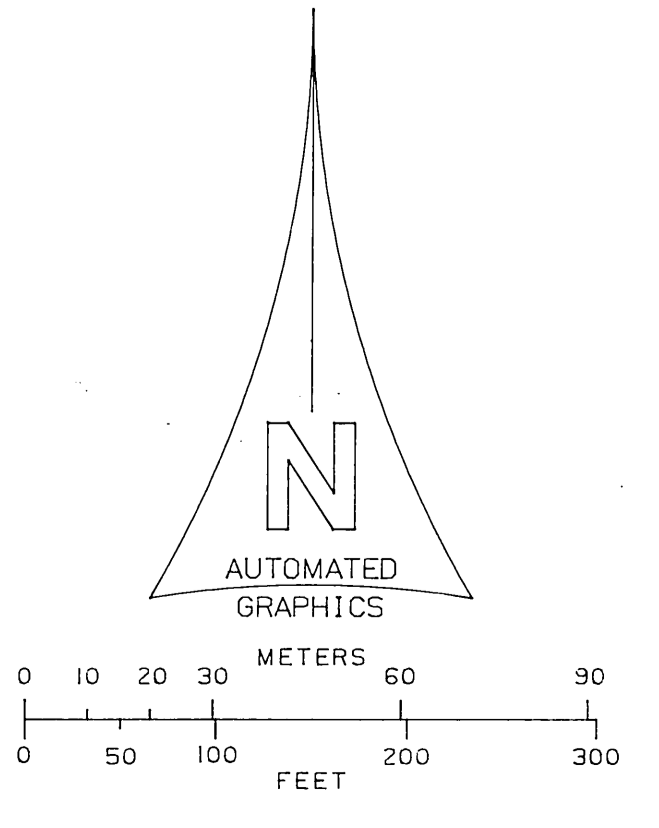
CURVE DATA				
NO	Δ	R	T	L
⑤	47°15'01"	400.00	174.97	329.87
④	11°07'33"	420.00		81.56
⑤	13°45'25"	380.00		91.24
⑥	1°18'52"	380.00		8.72
⑦	20°36'50"	350.00	63.65	125.92
⑧	20°36'50"	330.00		118.73
⑨	20°36'50"	370.00		133.12



INDEX MAP
NOT TO SCALE

NOTE: SLANT LETTERING DENOTES RECORD BEARING AND DISTANCE PER TOWNSHIP PLAT ACCEPTED FOR THE DIRECTOR OF THE BUREAU OF LAND MANAGEMENT ON SEPTEMBER 19, 1979 BY G. KODRINEK CHIEF, CADASTRAL SURVEY EXAMINATION AND APPROVAL STAFF.

THE FIELD NOTES OF THE 1979 BUREAU OF LAND MANAGEMENT SURVEY ARE FILED IN THE OFFICE OF THE CO. ENGR. AS "C.S.9467"



COUNTY OF LOS ANGELES
DEPARTMENT OF
COUNTY ENGINEER-FACILITIES
STEPHEN J. KODNCE-COUNTY ENGINEER
PREPARED BY
SURVEY DIVISION
RICHARD J. MITCHELL
ASSISTANT DEPUTY COUNTY ENGINEER
SURVEYED BY CL. CERCE
CHECKED BY R. BARTHOLOMEW
DRAWN BY E. FONG

MAP OF
SECTION 16
T.4 N. R.10 W.
BASIS OF BEARINGS
CALIFORNIA COORDINATE SYSTEM, ZONE 7

COUNTY SURVEYOR'S MAP NO B-5430		REVISION	
SHEET 4 OF 4 SHEETS		NO	BY DATE
FILED: <u>March 24, 1982</u> <u>R. J. Smith</u> DEPUTY			
MARCH 1977 TO JUNE 1980			
REFERENCE F.B.4343 F.B.3212			
JOB NUMBER 0302.01	INDEX MAP NO 81		