

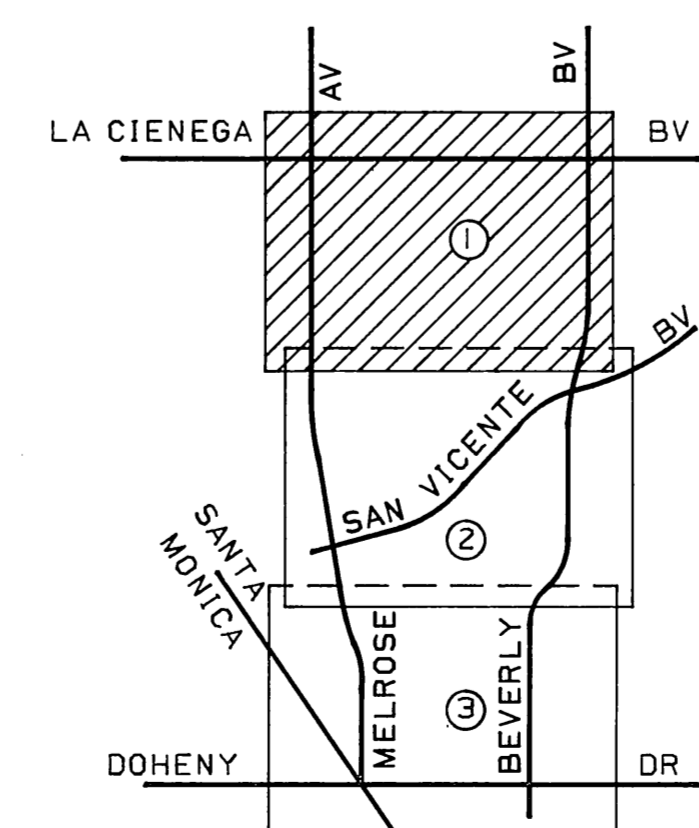
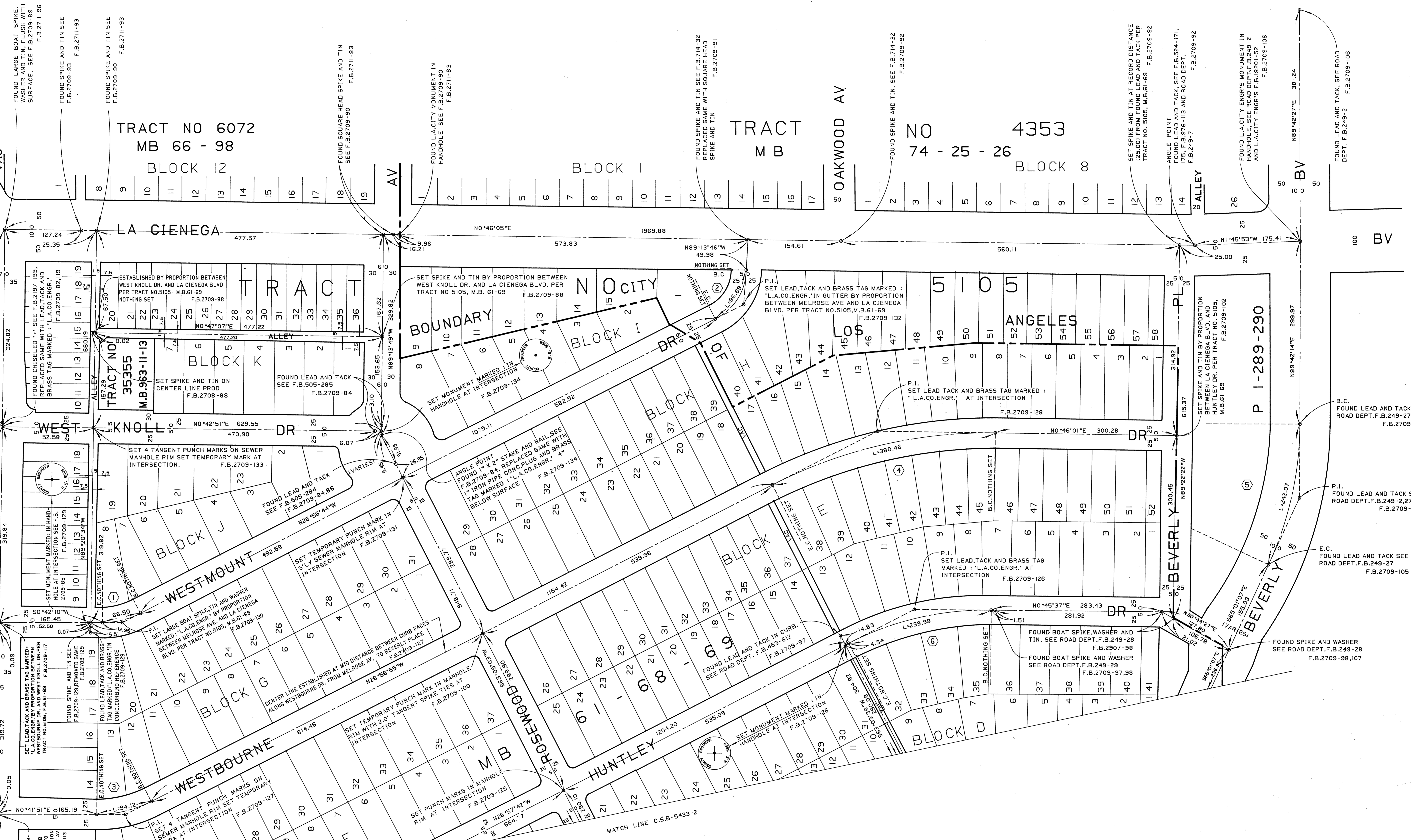
TR NO 6072
M B 66 - 98
BLOCK 1
32

52 - 23 - 125
SET LEAD, TACK AND BRASS TAG MARKED:
"L.A.CO.ENGR." 43 2 F.B.2709-119
BLOCK 44 P I 9

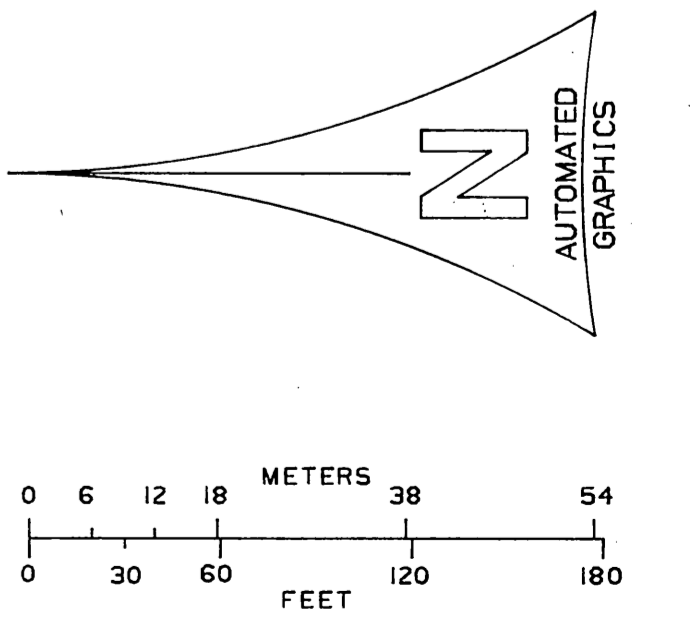
4679 43 2 M B
BLOCK 44 O I 8

TRACT 42 1 NO
BLOCK 43 N M 7
SET LEAD, TACK AND BRASS TAG MARKED:
"L.A.CO.ENGR." F.B.2709-117

TR NO 4912
M B 53 - 36
BLOCK 6



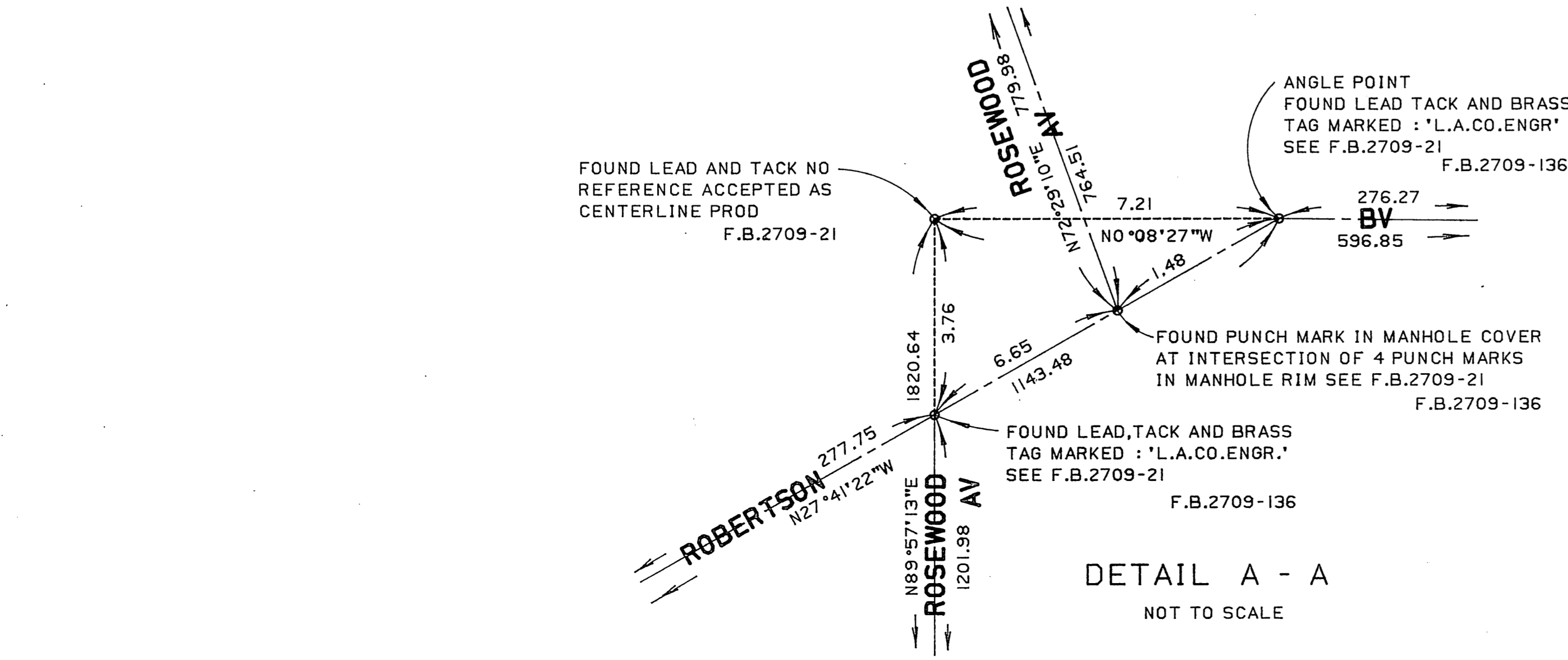
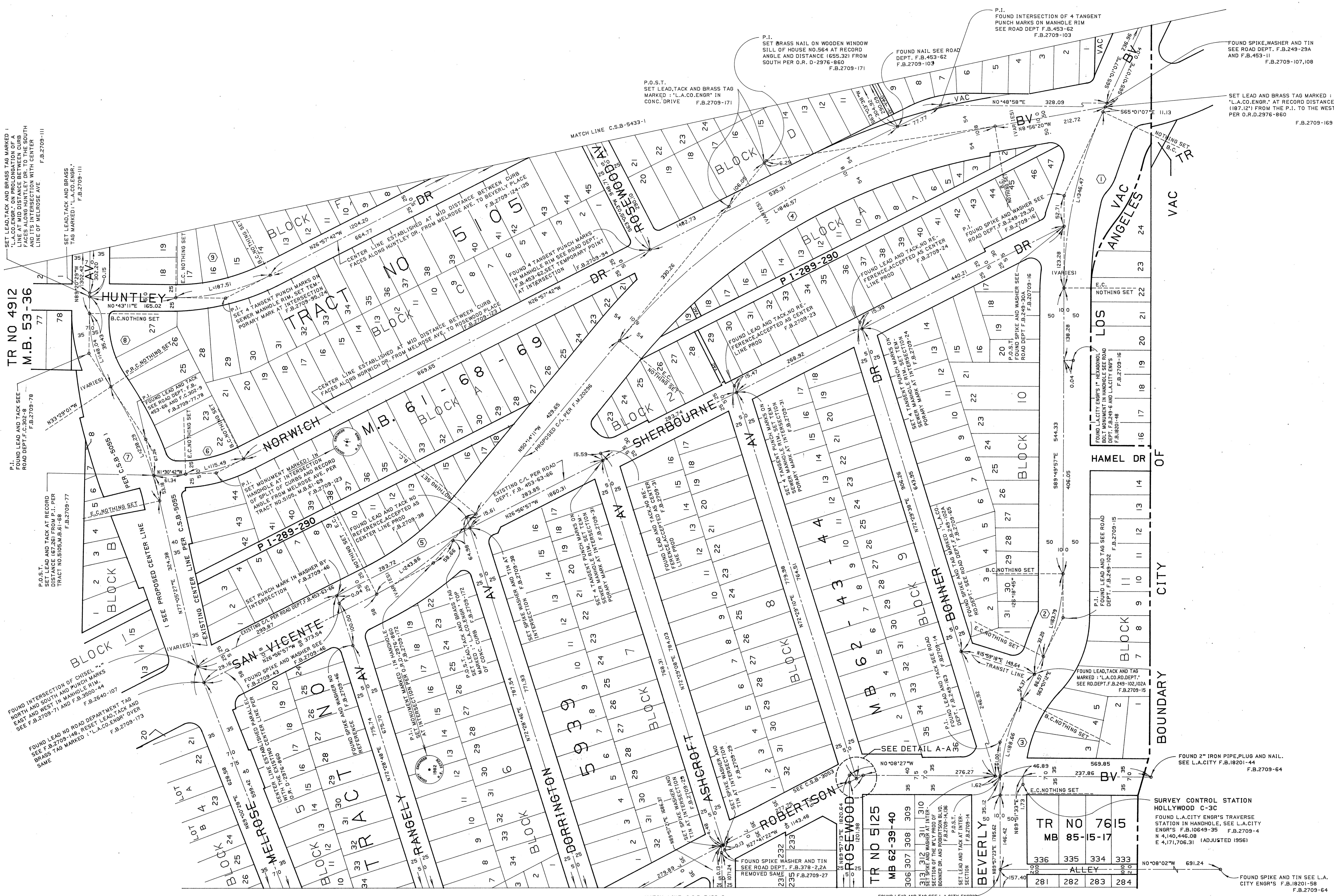
CURVE DATA				
NO	Δ	R	T	L
①	27°38'54"	137.81	33.91	66.50
②	62°17'02"	88.95	53.75	96.69
③	27°38'46"	195.07	48.00	94.12
④	27°43'05"	786.44	194.03	380.46
⑤	25°16'39"	548.69	123.04	242.07
⑥	27°43'19"	496.00	122.39	239.98



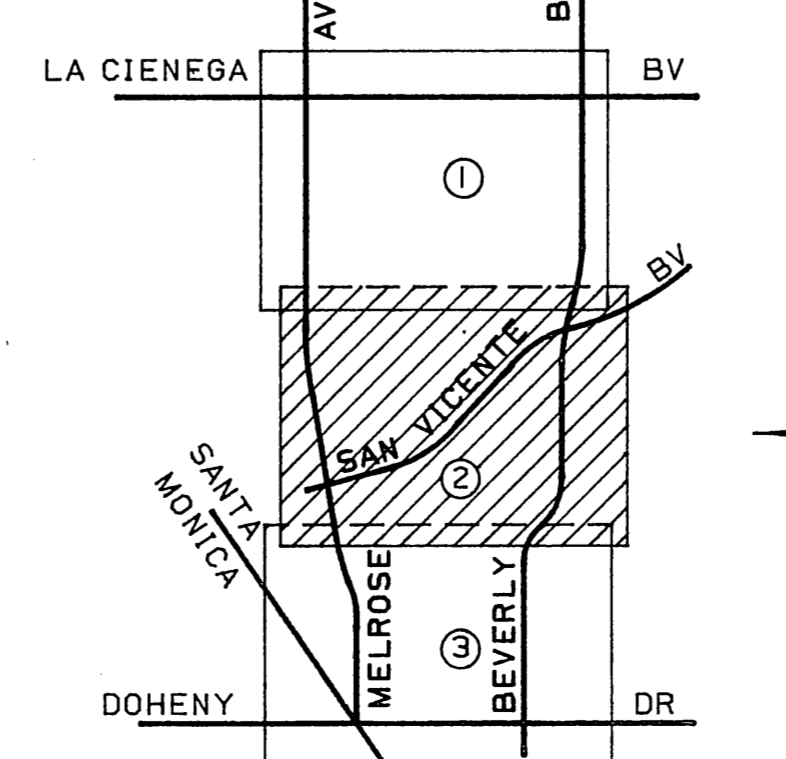
COUNTY OF LOS ANGELES
DEPARTMENT OF
COUNTY ENGINEER-FACILITIES
STEPHEN J. KOONCE-COUNTY ENGINEER
PREPARED BY
SURVEY DIVISION
RICHARD J. MITCHELL
ASSISTANT DEPUTY COUNTY ENGINEER
SURVEYED BY MENDOZA
CHECKED BY R. HILARIO
DRAWN BY E. FONG

ALIGNMENT MAP OF
**STREETS IN A PORTION OF
WEST HOLLYWOOD & SHERMAN
SEWER MAINTENANCE DISTRICT**
BASIS OF BEARINGS
CALIFORNIA COORDINATE SYSTEM, ZONE 7

COUNTY SURVEYOR'S MAP NO B-5433		REVISION
SHEET 1 OF 3 SHEETS		NO BY DATE
FILED: January 24, 1964 R. J. Mitchell DEPUTY SURVEYOR		
MARCH 1961 - JUNE 1962		
REFERENCE F.B.3218 F.B.2640 F.B.2709	INDEX MAP NO 129-157	
JOB NUMBER 0222.37		



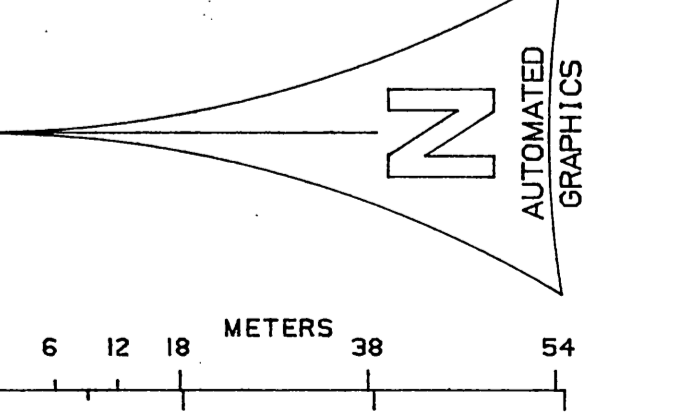
NO	Δ	R	T	L
①	24°48'50"	800.00	175.99	346.47
②	26°48'45"	350.00	83.42	163.79
③	27°01'25"	400.00	96.12	188.66
④	41°16'51"	1175.00	442.60	846.57
⑤	23°17'14"	600.00	123.64	243.86
⑥	25°27'00"	260.00	58.71	115.49
⑦	20°34'28"	663.58	120.44	238.29
⑧	34°08'32"	248.43	76.29	148.04
⑨	27°40'53"	388.11	95.62	187.51

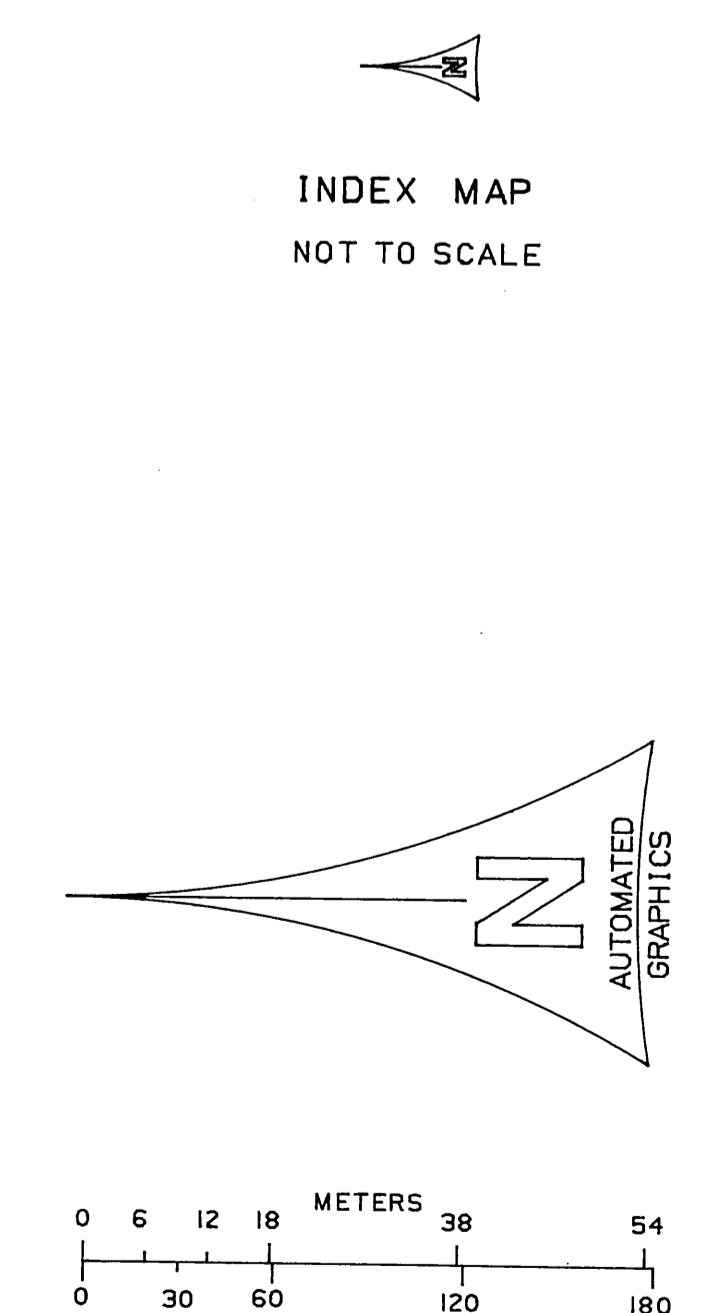
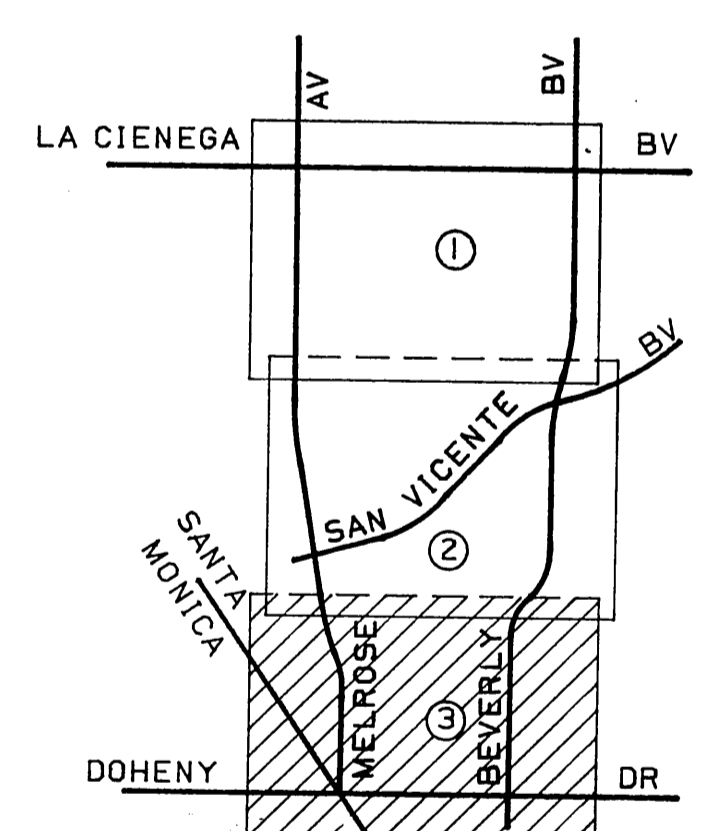


COUNTY OF LOS ANGELES
 DEPARTMENT OF
 COUNTY ENGINEER-FACILITIES
 STEPHEN J. KOONCE, COUNTY ENGINEER
 PREPARED BY
 SURVEY DIVISION
 RICHARD J. MITCHELL
 ASSISTANT DEPUTY COUNTY ENGINEER
 SURVEYED BY MENDONCA
 CHECKED BY B. HILARIO
 DRAWN BY E. FONG

ALIGNMENT MAP OF
**STREETS IN A PORTION OF
 WEST HOLLYWOOD & SHERMAN
 SEWER MAINTENANCE DISTRICT**
 BASIS OF BEARINGS
 CALIFORNIA COORDINATE SYSTEM, ZONE 7

COUNTY SURVEYOR'S MAP NO		REVISION	
B-5433		NO	BY DATE
SHEET 2 OF 3 SHEETS			
FILED: <i>James L. H. 1964</i> <i>R. J. Mitchell</i>			
MARCH 1961 - JUNE 1962			
REFERENCE F.B. 3218 F.B. 2640 F.B. 2709			
JOB NUMBER 0222.37	INDEX MAP NO 129-157		





TRACT NO 5647 M B 60 - 88

BLOCK 1

BLOCK 2

SURVEY CONTROL STATION
HOLLYWOOD B-3A
FOUND L.A.CITY ENGR'S TRAVERSE
STATION IN HANDHOLE, SEE L.A.CITY
ENGR'S F.B.10665-192 F.B.3218-59
N 4,140,496.35
E 4,169,514.01 (1949 ADJUSTMENT)

COUNTY OF LOS ANGELES DEPARTMENT OF COUNTY ENGINEER-FACILITIES STEPHEN J. MOORE-COUNTY ENGINEER		ALIGNMENT MAP OF		COUNTY SURVEYOR'S MAP NO B-5433		REVISION	
PREPARED BY SURVEY DIVISION RICHARD J. MITCHELL ASSISTANT DEPUTY COUNTY ENGINEER		STREETS IN A PORTION OF WEST HOLLYWOOD & SHERMAN SEWER MAINTENANCE DISTRICT		SHEET 3 OF 3 SHEETS FILED: <i>January 24, 1964</i> <i>R.J. Mitchell</i> DEPUTY SURVEYOR		NO. BY DATE	
SURVEYED BY: MENDONCA		BASIS OF BEARINGS		REFERENCE F.B.3218 F.B.2640 F.B.2709			
CHECKED BY: R.HILLARD		CALIFORNIA COORDINATE SYSTEM, ZONE 7		JOB NUMBER 0222.37		INDEX MAP NO 129-157	
DRAWN BY: E.FONG							