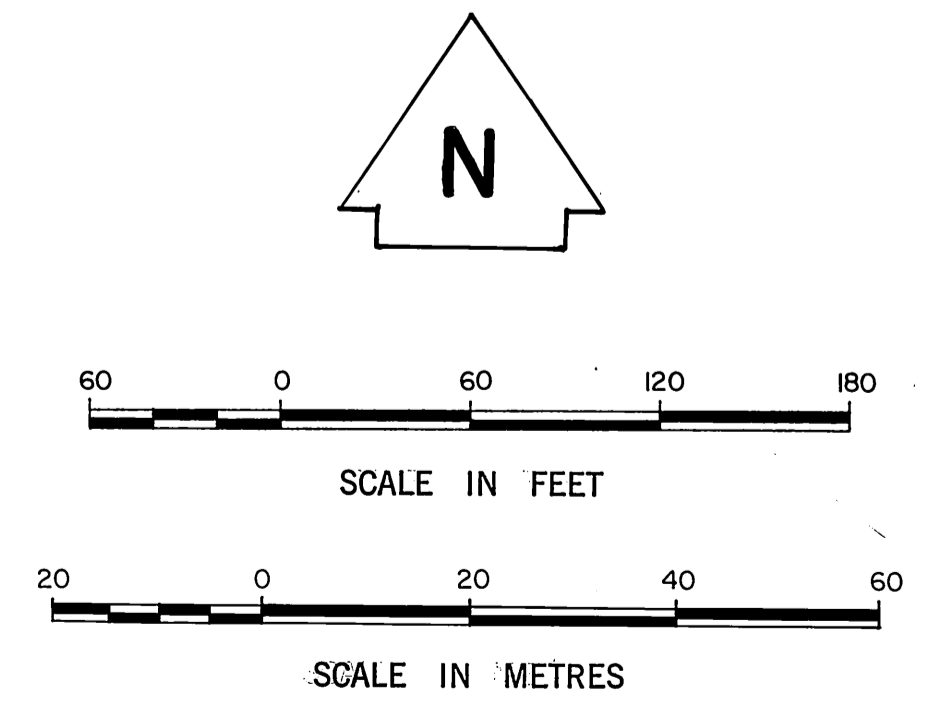
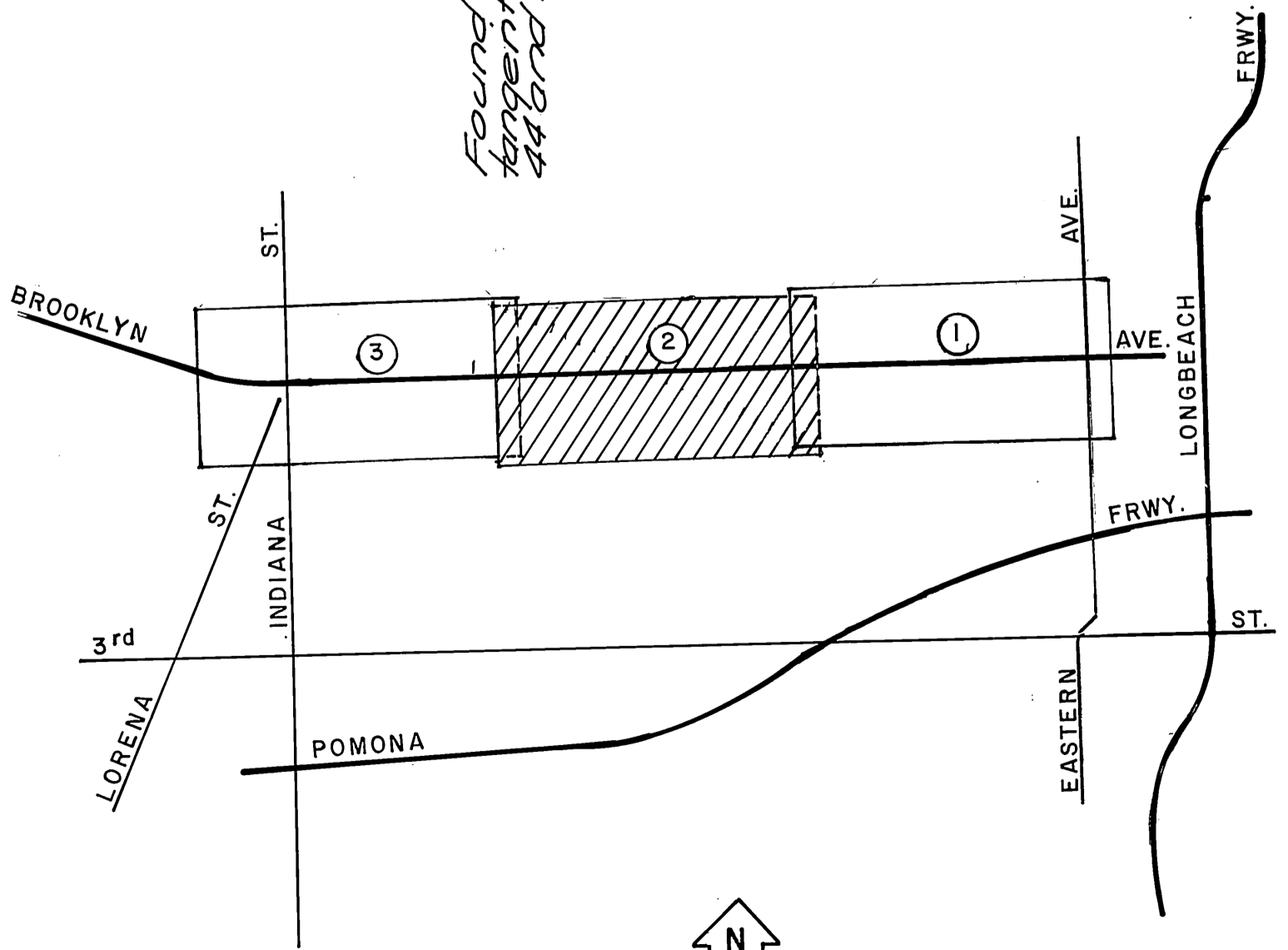
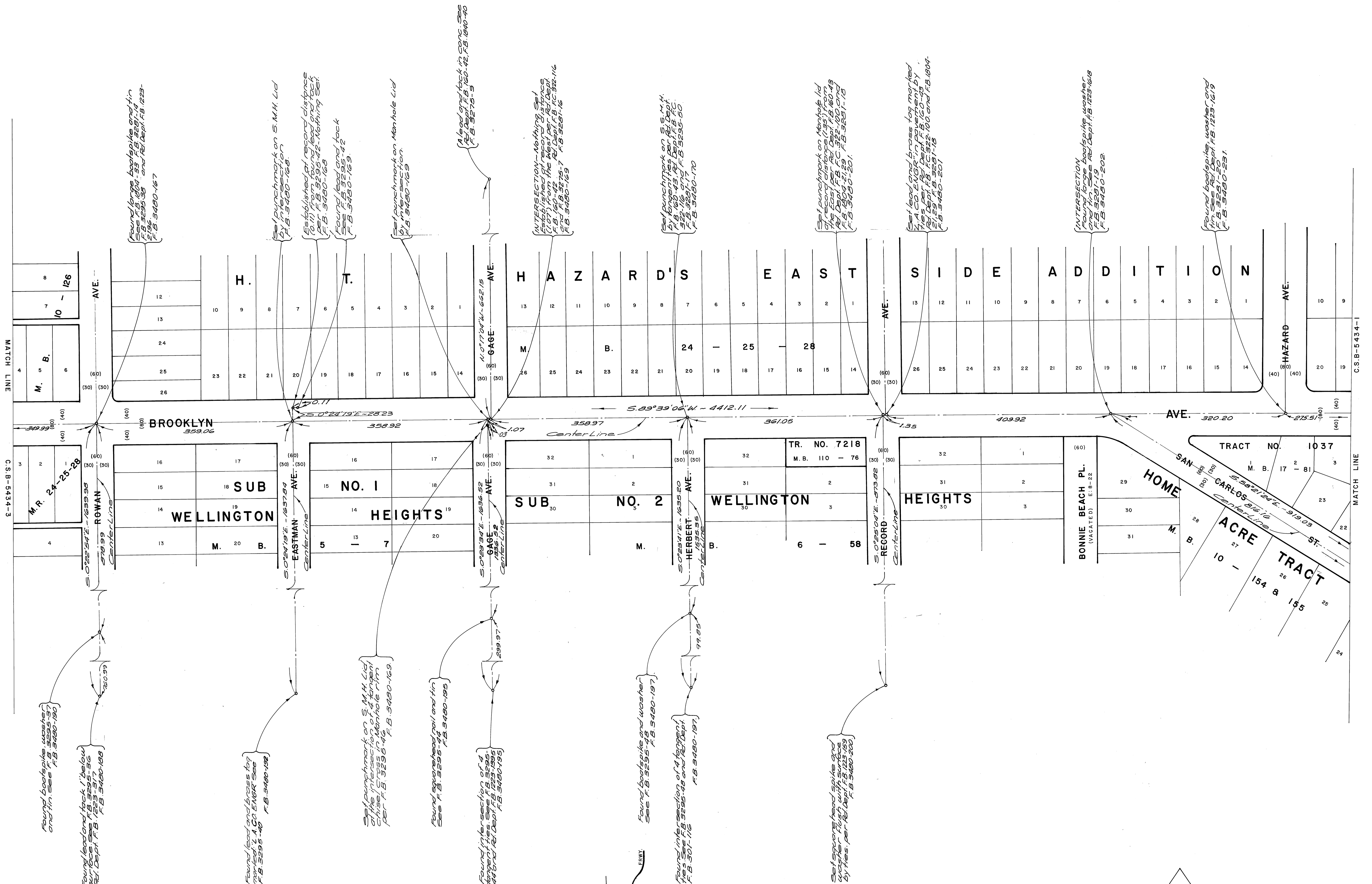
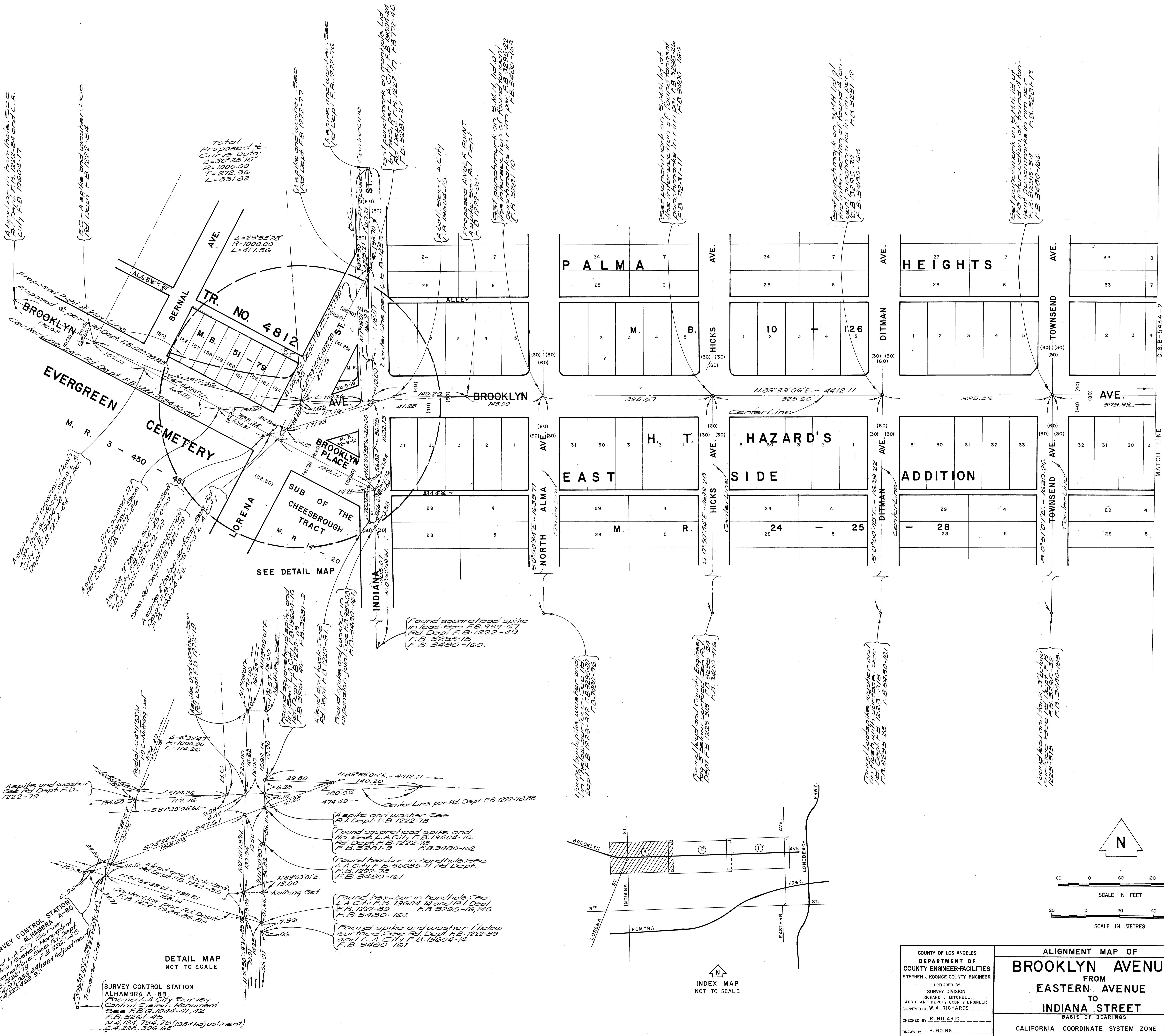


COUNTY OF LOS ANGELES DEPARTMENT OF COUNTY ENGINEER-FACILITIES STEPHEN J. KOONCE-COUNTY ENGINEER PREPARED BY SURVEY DIVISION RICHARD J. MITCHELL ASSISTANT DEPUTY COUNTY ENGINEER SURVEYED BY W.A. RICHARDS CHECKED BY R. HILARIO DRAWN BY B. GOINS	ALIGNMENT MAP OF BROOKLYN AVENUE FROM EASTERN AVENUE TO INDIANA STREET <small>BASIS OF BEARINGS</small>		COUNTY SURVEYOR'S MAP NO. B-5434 SHEET 1 OF 3 SHEETS FILED: <i>December 30, 1982</i> <i>W.A. Richards</i>	REVISION NO. BY DATE
	CALIFORNIA COORDINATE SYSTEM ZONE 7		SURVEYED DEC. 1972 REFERENCE F.B. 3113, F.B. 3261, F.B. 3281, F.B. 3481 & C.S.B. 5009	
			JOB NUMBER 0209.21	INDEX MAP NO. 7



COUNTY OF LOS ANGELES DEPARTMENT OF COUNTY ENGINEER-FACILITIES STEPHEN J. KOONCE-COUNTY ENGINEER PREPARED BY SURVEY DIVISION RICHARD J. MITCHELL ASSISTANT COUNTY ENGINEER SURVEYED BY W.A. RICHARDS CHECKED BY R. HILARIO DRAWN BY B. GOINS	ALIGNMENT MAP OF BROOKLYN AVENUE FROM EASTERN AVENUE TO INDIANA STREET		COUNTY SURVEYOR'S MAP NO. B-5434 SHEET 2 OF 3 SHEETS FILED: <i>December 30, 1982</i> <i>By: [Signature]</i>	REVISION NO. BY DATE	
	BASIS OF BEARINGS CALIFORNIA COORDINATE SYSTEM ZONE 7		DEC. 1972 REFERENCE F.B. 3113, F.B. 3251, F.B. 3281, F.B. 3481 & C.S.B. 5009		
			JOB NUMBER 020821	INDEX MAP NO. 7	



Aspikes and washers See
Rel. Dept. F.B. 1222-84
City F.B. 19604-17

Aspikes and washers See
Rel. Dept. F.B. 1222-84

Total
Proposed 4
Curve Data:
A=30°23'15"
R=1000.00
T=272.36
L=531.82

A=23°55'28"
R=1000.00
L=417.56

Aspikes and washers
See City F.B. 19604-17 and
Rel. Dept. F.B. 1222-84

Aspikes and washers
See City F.B. 19604-17 and
Rel. Dept. F.B. 1222-84

Aspikes and washers
See City F.B. 19604-17 and
Rel. Dept. F.B. 1222-84

SEE DETAIL MAP

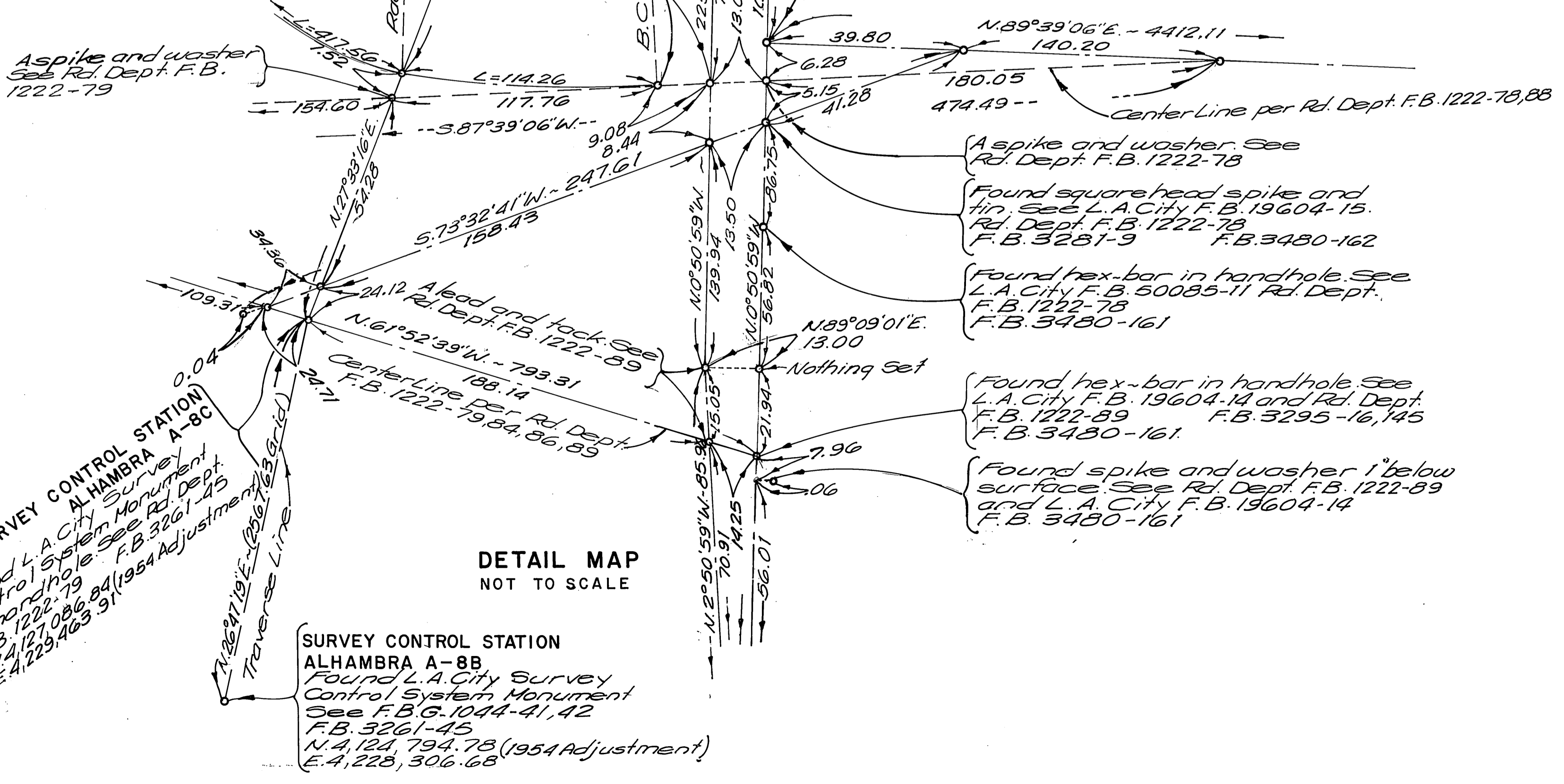
Found square head spike
in lead. See F.B. 3480-67
Rel. Dept. F.B. 1222-49
F.B. 3480-15
F.B. 3480-16

Found bolts, spike, washer, and
nut. See F.B. 3480-36
Rel. Dept. F.B. 1222-515
F.B. 3480-36

Found lead and County Engineer's
tag. See F.B. 3480-36
Rel. Dept. F.B. 1222-515
F.B. 3480-36

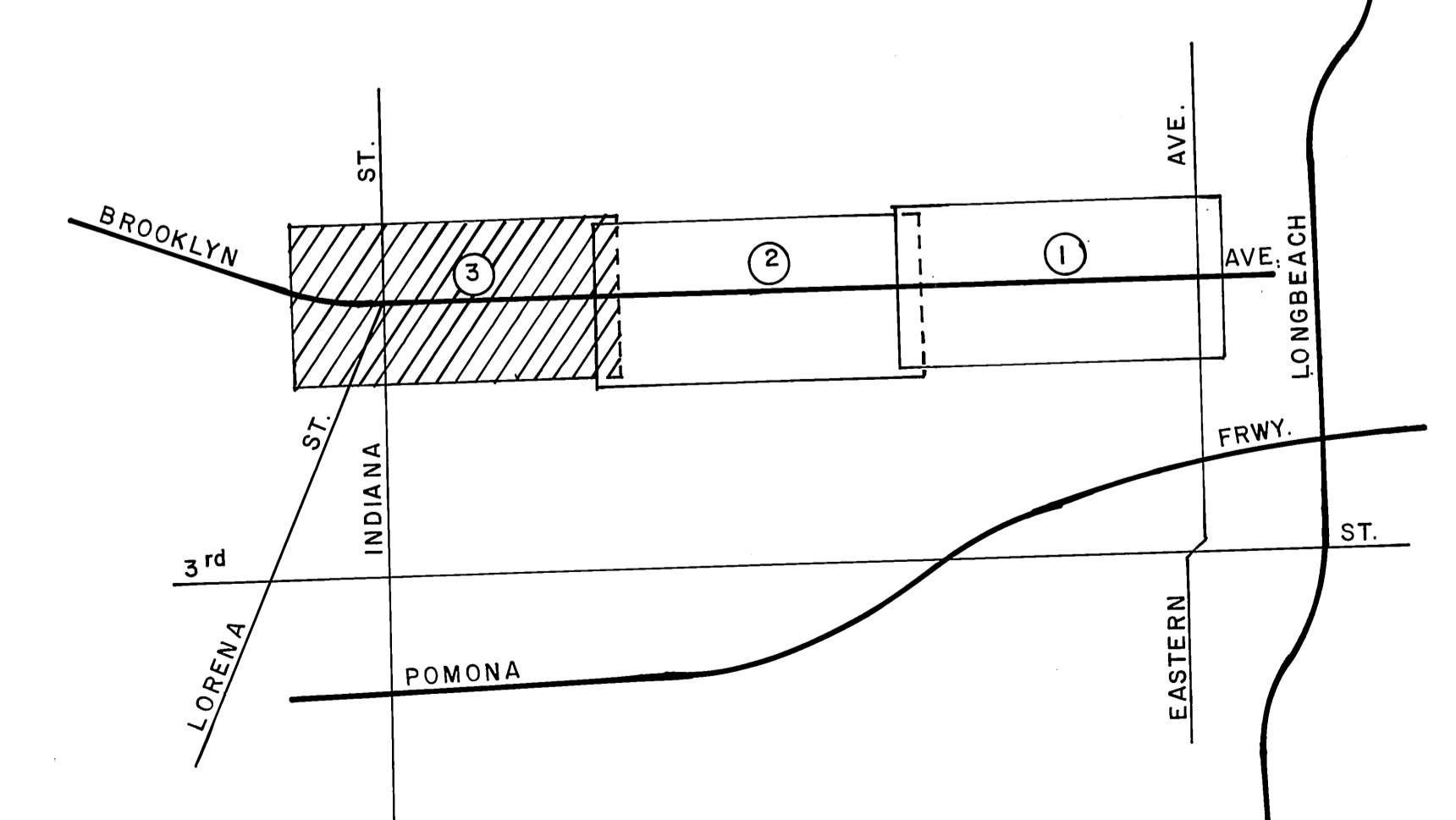
Found bolts, spike, washer, and
nut. See F.B. 3480-181
Rel. Dept. F.B. 1222-515
F.B. 3480-181

Found lead and bolt. See F.B. 3480-181
Rel. Dept. F.B. 1222-515
F.B. 3480-181

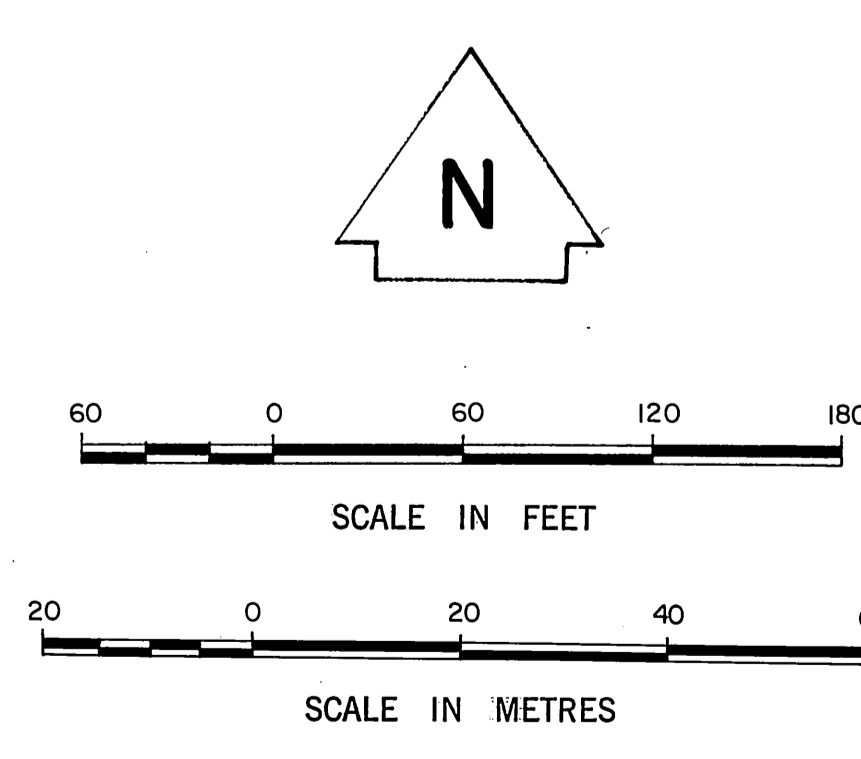


DETAIL MAP
NOT TO SCALE

SURVEY CONTROL STATION
ALHAMBRA A-8B
Found L.A. City Survey
Control System Monument
See F.B. 19604-14 and Rel. Dept.
F.B. 1222-79, 80, 81, 82, 83
N 74° 12' 14.78 (1954 Adjustment)
E 4° 22' 30.66



INDEX MAP
NOT TO SCALE



COUNTY OF LOS ANGELES DEPARTMENT OF COUNTY ENGINEER-FACILITIES STEPHEN J. KOONCE-COUNTY ENGINEER PREPARED BY SURVEY DIVISION RICHARD J. MITCHELL ASSISTANT DEPUTY COUNTY ENGINEER SURVEYED BY M. A. RICHARDS CHECKED BY R. HILARIO DRAWN BY B. GOINS	ALIGNMENT MAP OF BROOKLYN AVENUE FROM EASTERN AVENUE TO INDIANA STREET <small>BASIS OF BEARINGS</small>		COUNTY SURVEYOR'S MAP NO. B-5434 SHEET 3 OF 3 SHEETS FILED: December 30, 1972 DEPT. ENGINEER DEC. 1972 REFERENCE F.B. 3113, F.B. 3251, F.B. 3281, F.B. 3481 & C.S.B. 5009 JOB NUMBER 0208.21	REVISION NO. BY DATE
	CALIFORNIA COORDINATE SYSTEM ZONE 7		INDEX MAP NO. 7	