

TRACT

NO.

606

M. B. 15 - 142 - 143

BLK. 444

BLK. 445

UNRUH AVE.  
(60)

UNRUH AVE.  
(80)

BLK. 446

C.S.B-5442-2

SOUTHERN

PACIFIC

RAILROAD

COMPANY

R/W

VALLEY

BLVD.

TURNBULL CANYON ROAD

Existing & Curve Data:  
Δ = 4°00'30"  
R = 17,105.76'  
T = 598.59'  
L = 1195.72'

Proposed & Curve Data:  
Δ = 4°00'30"  
R = 17,091.76'  
T = 598.10'  
L = 1195.72'

TRACT

NO.

1343

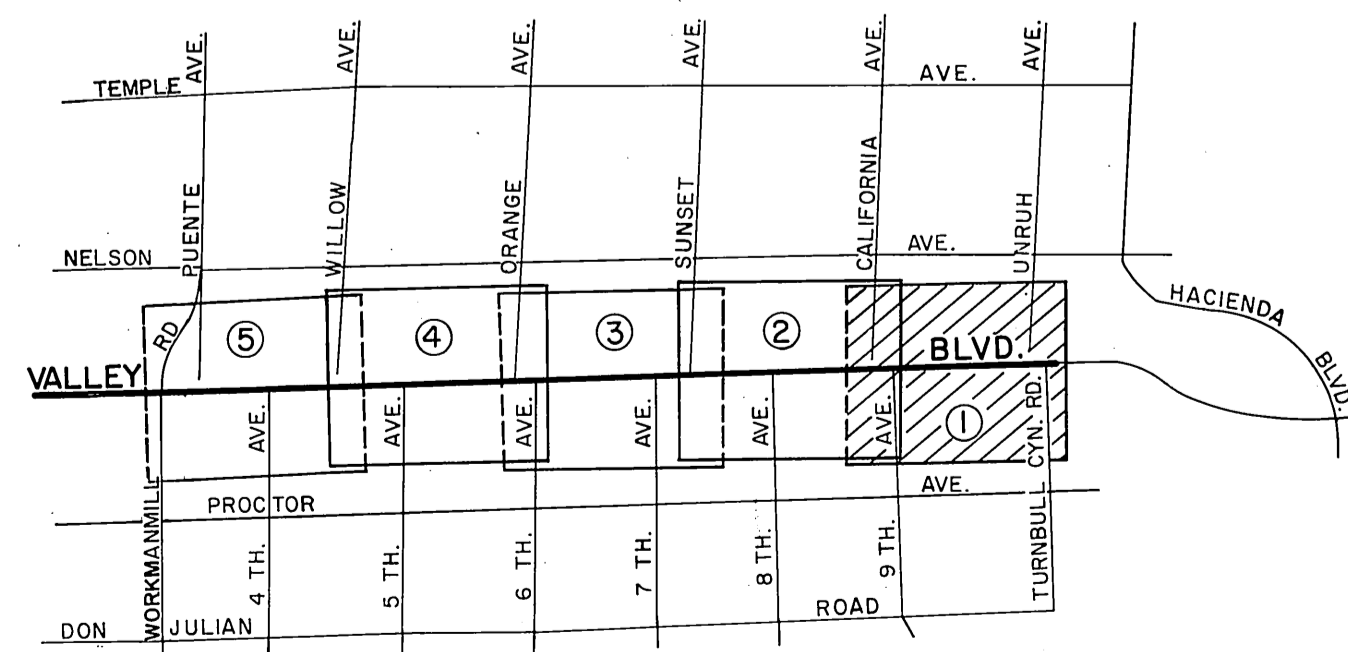
M. B. 20 - 10 - 11

BLK. 3

BLK. 2

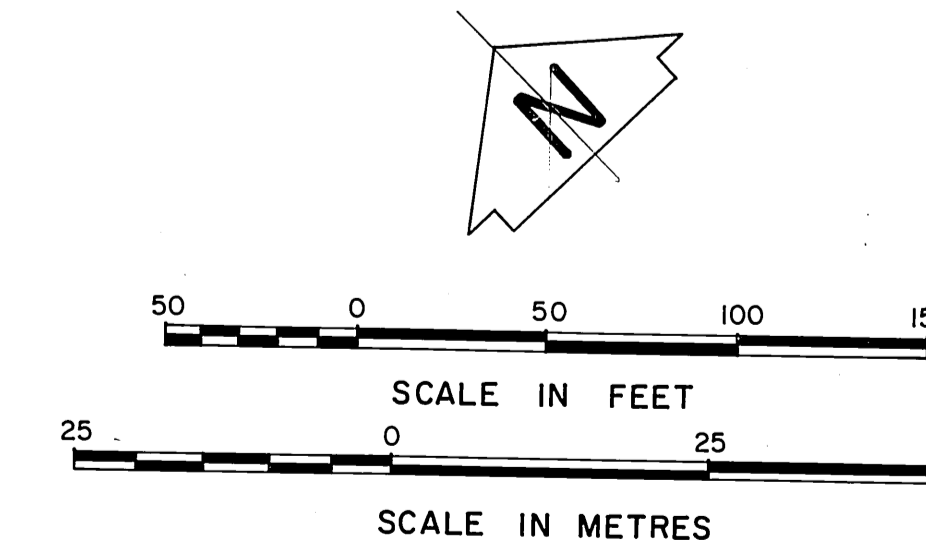
BLK. 1

NOTE:  
THIS MAP DELINEATES THE REVISED SOUTHERLY RIGHT OF WAY LINE OF VALLEY BOULEVARD FROM TURNBULL CANYON ROAD TO WORKMAN MILL ROAD ADOPTED BY THE I.E.C. DATED DEC.15, 1982, AND SUPERSEDES C.S. B. 5033.

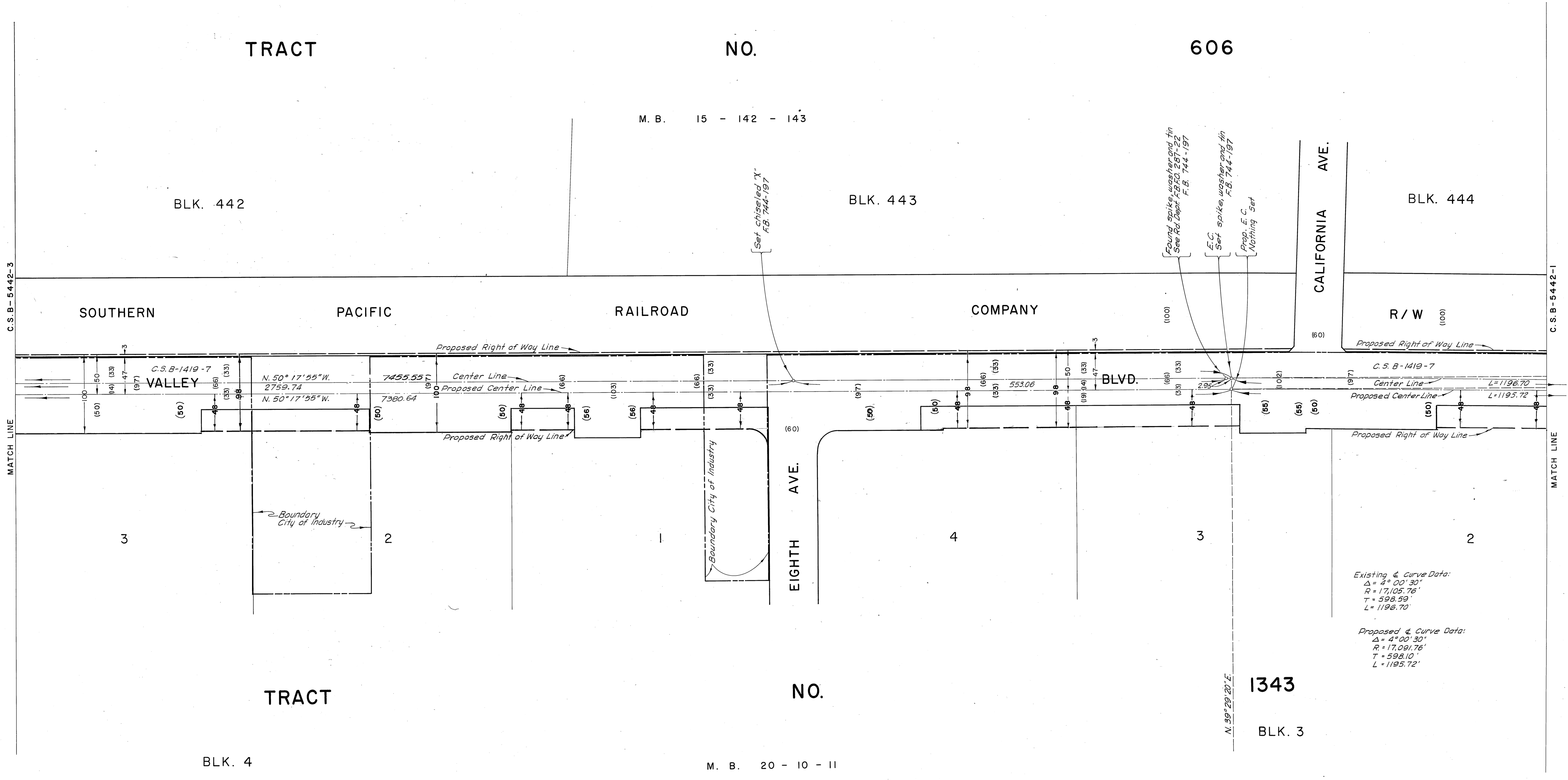


VICINITY MAP  
NOT TO SCALE

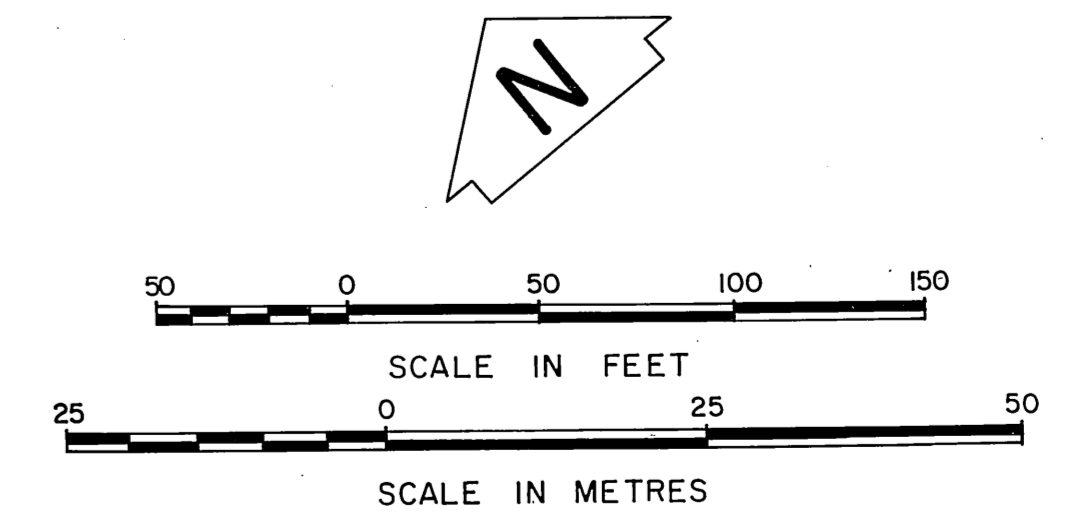
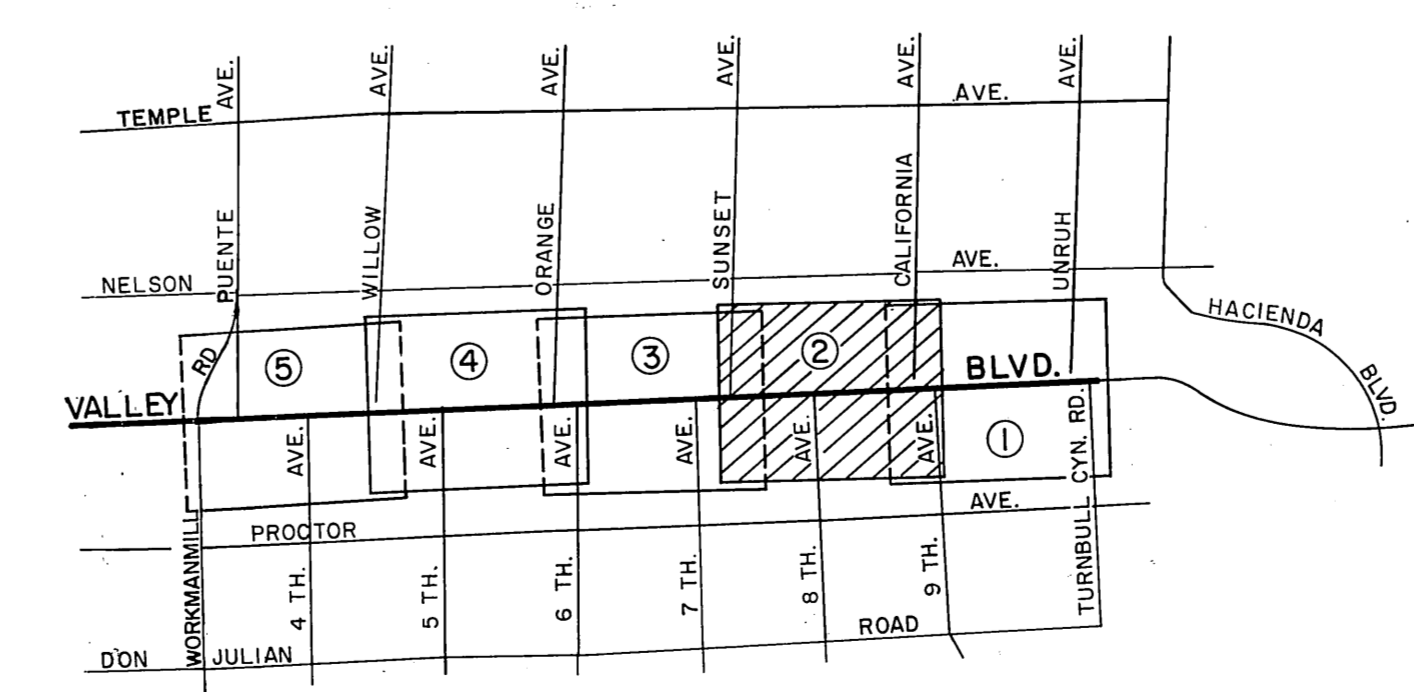
Found 2"x2" stake 6" below surface. Replaced 2"x2" stake with 3/4" iron pipe .12" below surface.  
F.B. 744-193



COUNTY OF LOS ANGELES DEPARTMENT OF COUNTY ENGINEER-FACILITIES STEPHEN J. KOONCE-COUNTY ENGINEER PREPARED BY SURVEY DIVISION RICHARD J. MITCHELL ASSISTANT DEPUTY COUNTY ENGINEER SURVEYED BY A.N. HELLSROM CHECKED BY R.G. HILARIO DRAWN BY B. GOINS	ALIGNMENT MAP OF <b>VALLEY BOULEVARD</b> FROM <b>TURNBULL CANYON ROAD</b> TO <b>WORKMAN MILL ROAD</b> BASIS OF BEARINGS THE CENTER LINE OF VALLEY BOULEVARD (N. 46°17'25"W) AS SHOWN ON C.S.B. 1419-7		COUNTY SURVEYOR'S MAP NO. <b>B 5442</b> SHEET 1 OF 5 SHEETS FILED <i>March 28</i> 1982 <i>R. J. Goins</i> DEPUTY SEPT. 1935 SURVEYED JULY 1950 DEPUTY REFERENCE F. B. 520-135-192 F. B. 744-1-280 JOB NUMBER INDEX MAP NO. 1518.06 37, 38, 46	REVISION NO. BY DATE



NOTE:  
 THIS MAP DELINEATES THE REVISED SOUTHERLY  
 RIGHT OF WAY LINE OF VALLEY BOULEVARD FROM  
 TURNBULL CANYON ROAD TO WORKMAN MILL ROAD  
 ADOPTED BY THE I.E.C. DATED DEC. 15, 1982, AND  
 SUPERSEDES C.S.B. 5033.



COUNTY OF LOS ANGELES DEPARTMENT OF COUNTY ENGINEER-FACILITIES STEPHEN J. KOONCE-COUNTY ENGINEER PREPARED BY SURVEY DIVISION RICHARD J. MITCHELL ASSISTANT DEPUTY COUNTY ENGINEER R. B. SIMMONS CHECKED BY <u>B. G. HILARIO</u> DRAWN BY <u>B. GOINS</u>	ALIGNMENT MAP OF <b>VALLEY BOULEVARD</b> FROM <b>TURNBULL CANYON ROAD</b> TO <b>WORKMAN MILL ROAD</b> <small>BASIS OF BEARINGS</small> <b>THE CENTER LINE OF VALLEY BOULEVARD (N. 46°17'25"W.)</b> AS SHOWN ON C.S.B. 1419-7		COUNTY SURVEYOR'S MAP NO. <b>B-5442</b> SHEET 2 OF 5 SHEETS FILED <u>Nov 28 1983</u> SURVEYED SEPT. 1935 - JULY 1950 REFERENCE F. B. 520-13-192 F. B. 744-1-280 JCR NUMBER 1518.06	REVISION NO. BY DATE    
	INDEX MAP NO. 37, 38, 46			

TRACT NO. 606

M. B. 15 - 142 - 143

BLK. 440

BLK. 441

BLK. 442

SOUTHERN PACIFIC RAILROAD COMPANY

VALLEY BLVD. Center Line C.S.B-1419-7

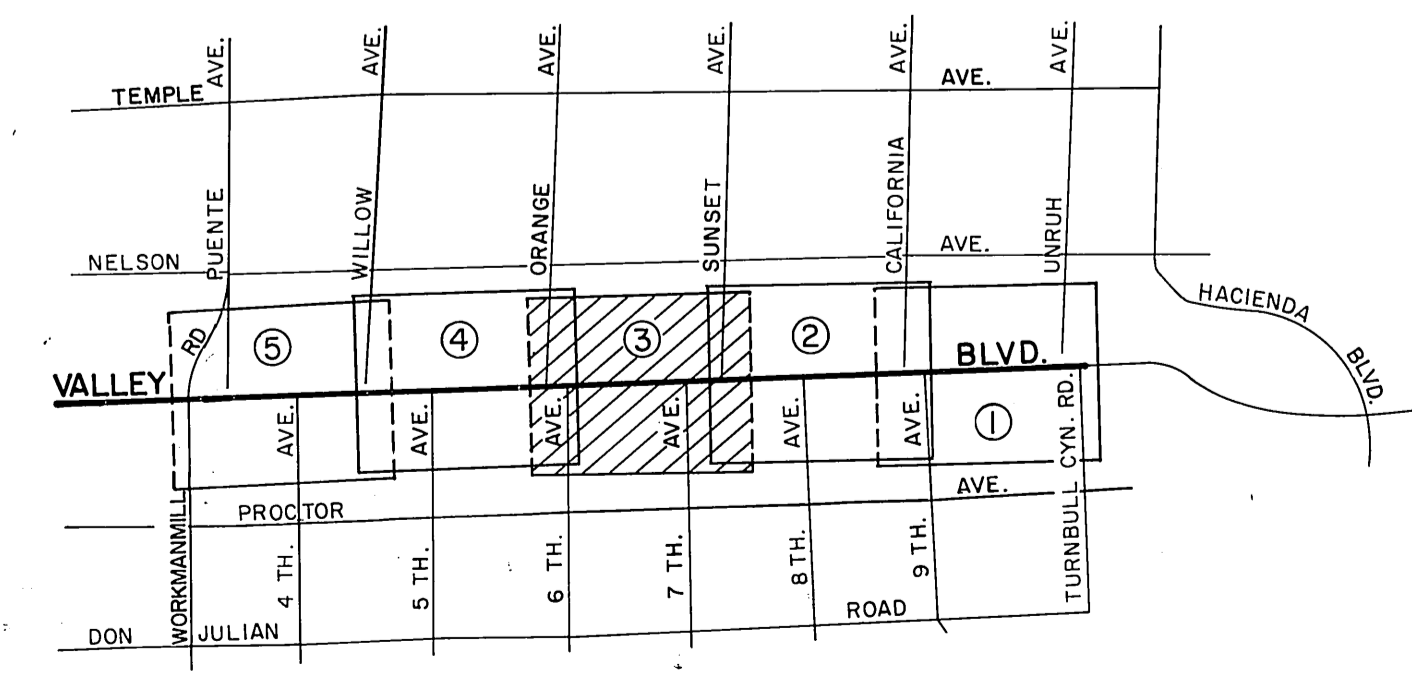
BLK. 5

BLK. 4

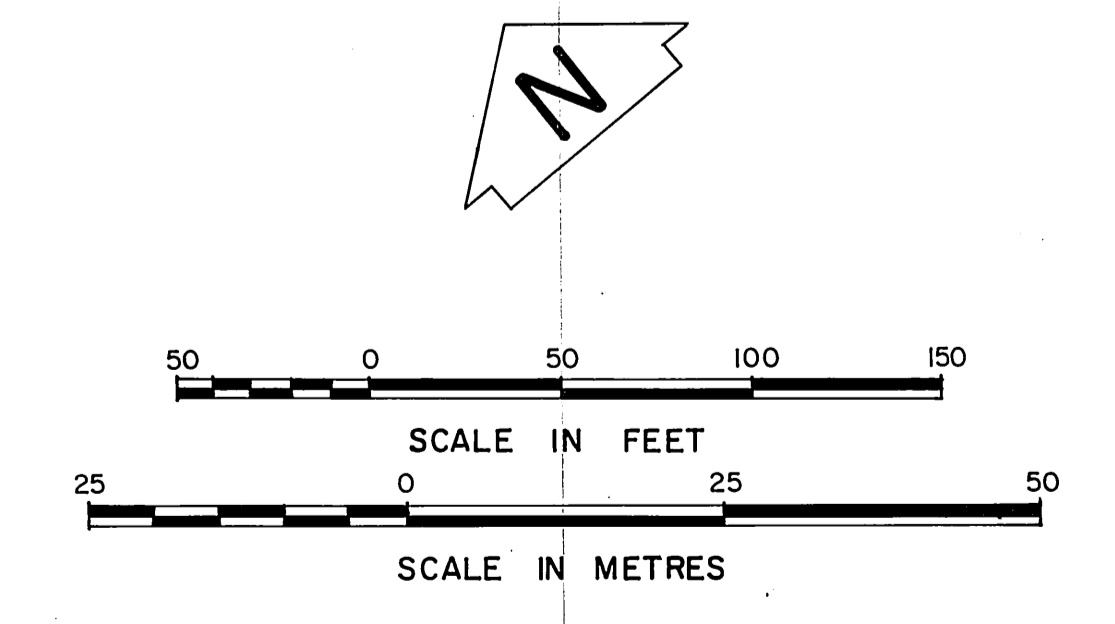
TRACT NO. 1343

M. B. 20 - 10 - 11

NOTE: THIS MAP DELINEATES THE REVISED SOUTHERLY RIGHT OF WAY LINE OF VALLEY BOULEVARD FROM TURNBULL CANYON ROAD TO WORKMAN MILL ROAD ADOPTED BY THE I. E. C. DATED DEC. 15, 1982, AND SUPERSEDES C.S.B. 5033.

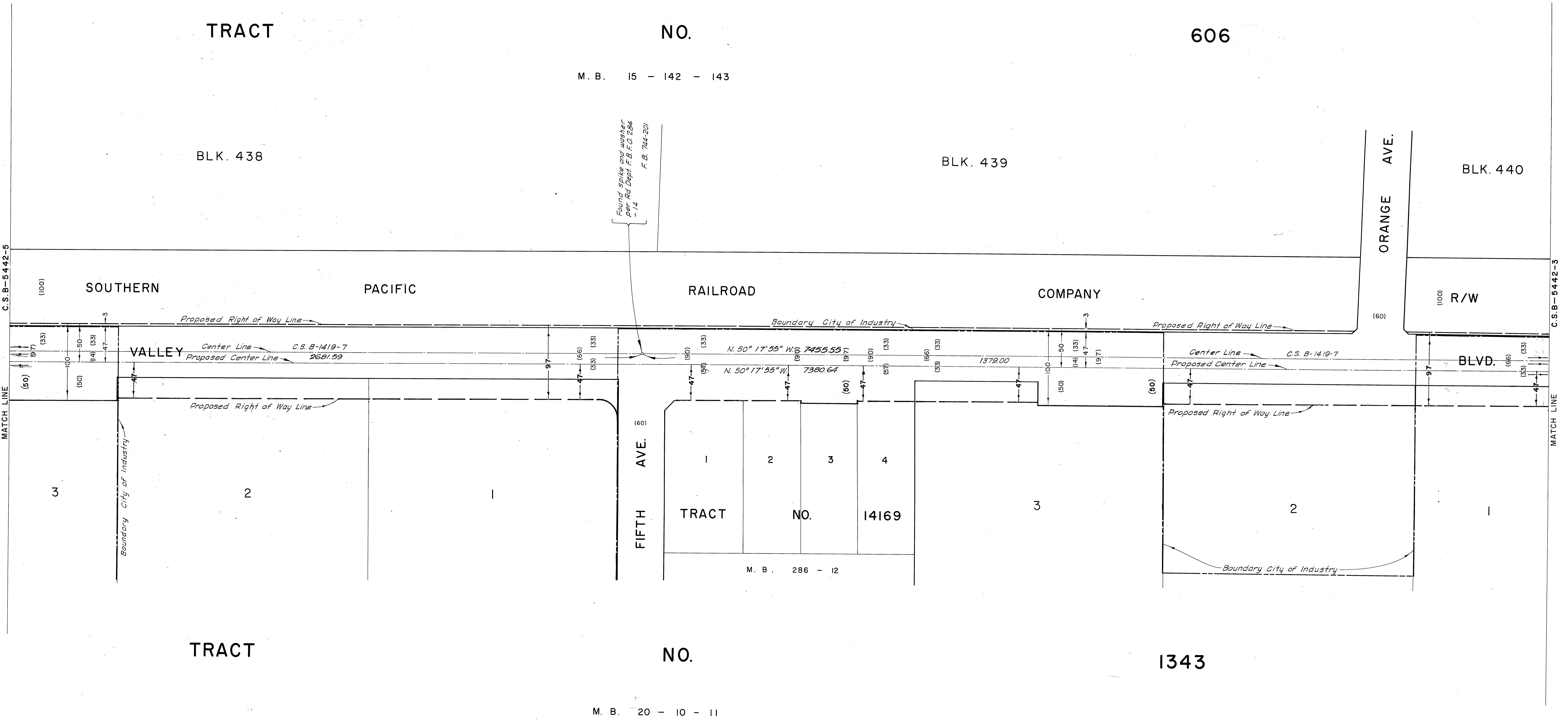


VICINITY MAP NOT TO SCALE



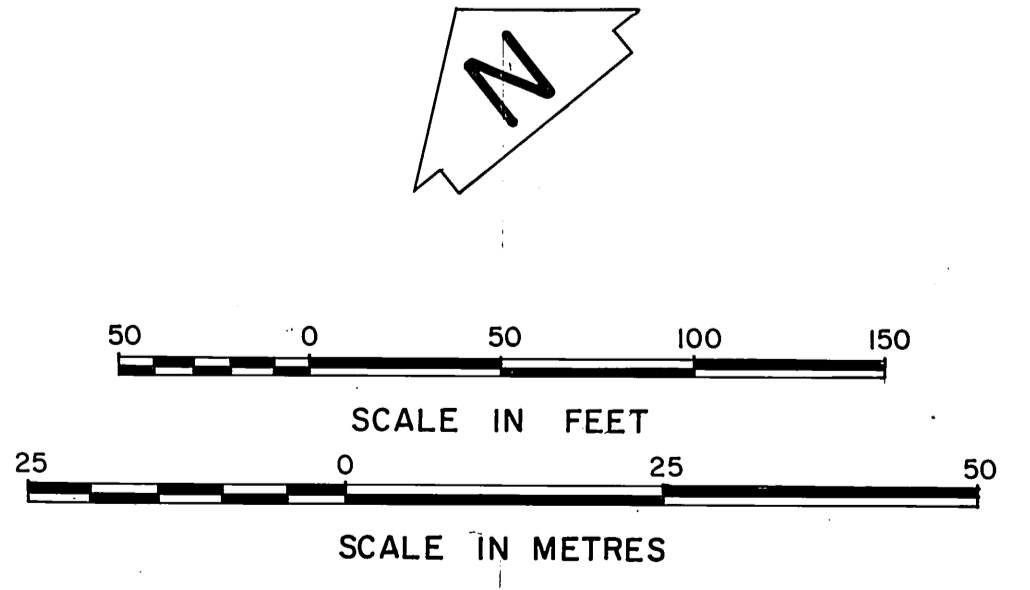
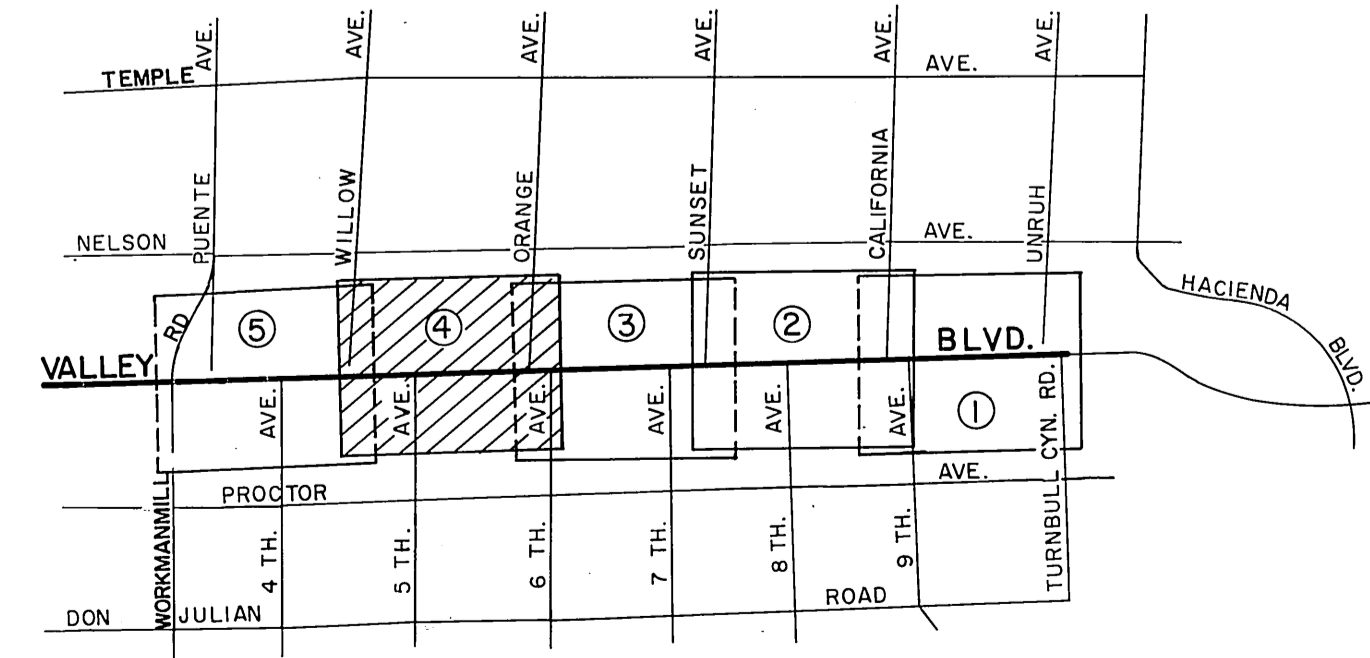
Alignment map title block containing project details, surveyor information, and a revision table.

C.S.B-2442-B.2.C



Found spikes and washer  
per Rec Dept. F.B. 744-284  
- 14  
F.B. 744-201

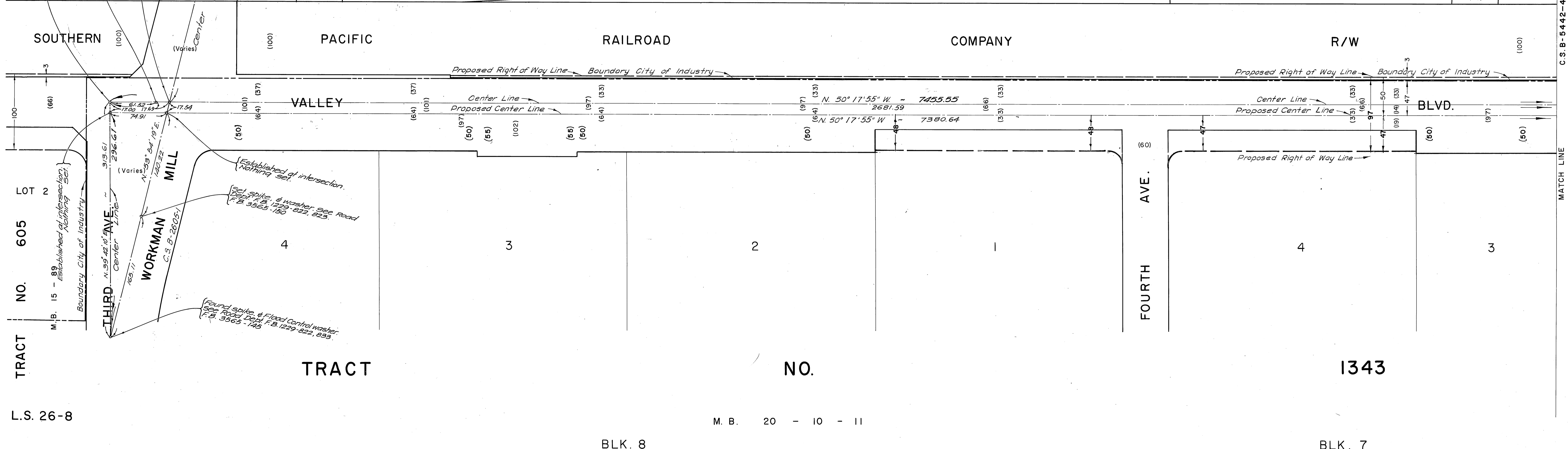
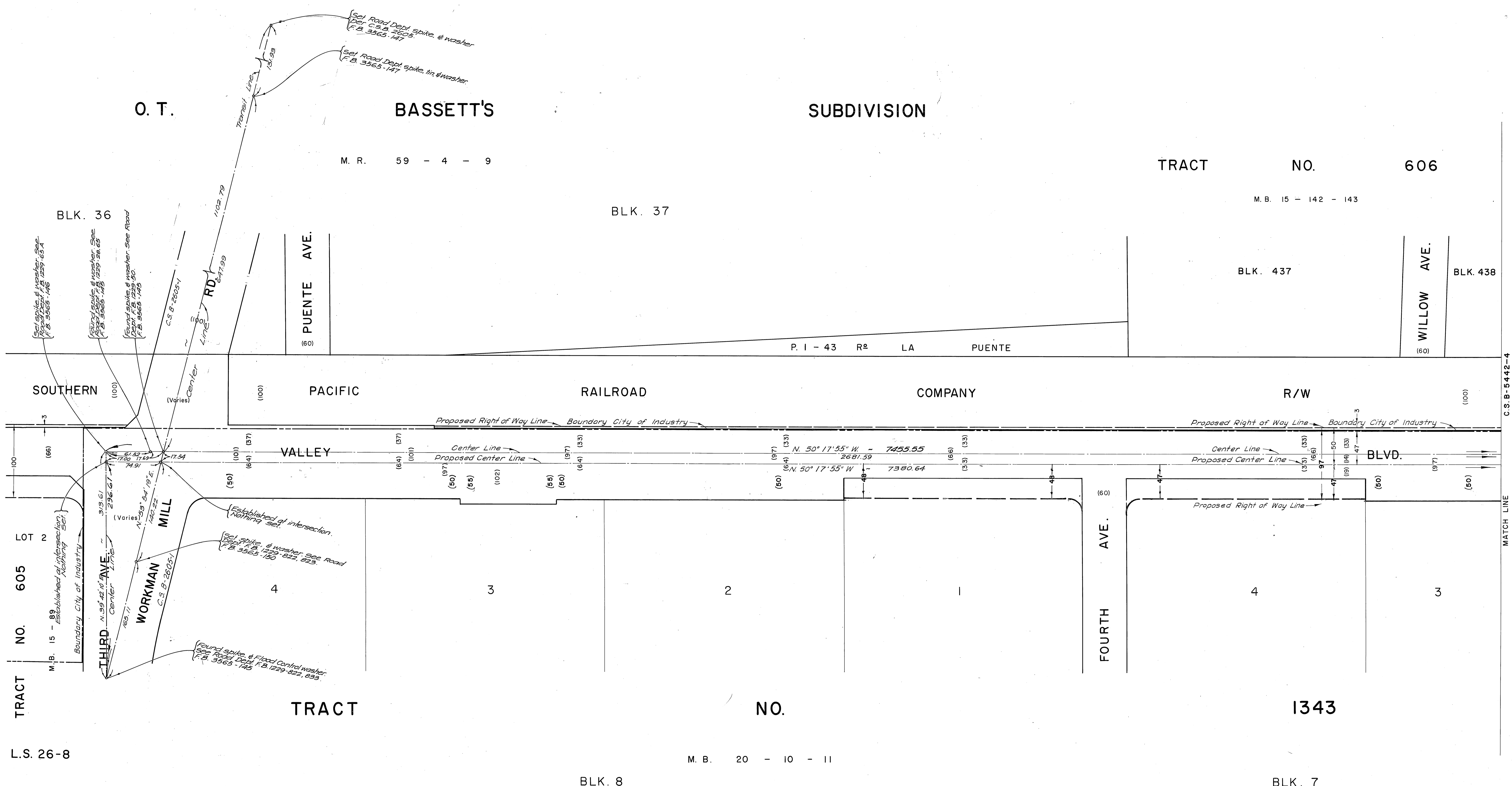
NOTE:  
THIS MAP DELINEATES THE REVISED SOUTHERLY  
RIGHT OF WAY LINE OF VALLEY BOULEVARD FROM  
TURNBULL CANYON ROAD TO WORKMAN MILL ROAD  
ADOPTED BY THE I.E.C. DATED DEC. 15, 1982, AND  
SUPERSEDES C.S.B. 5033.



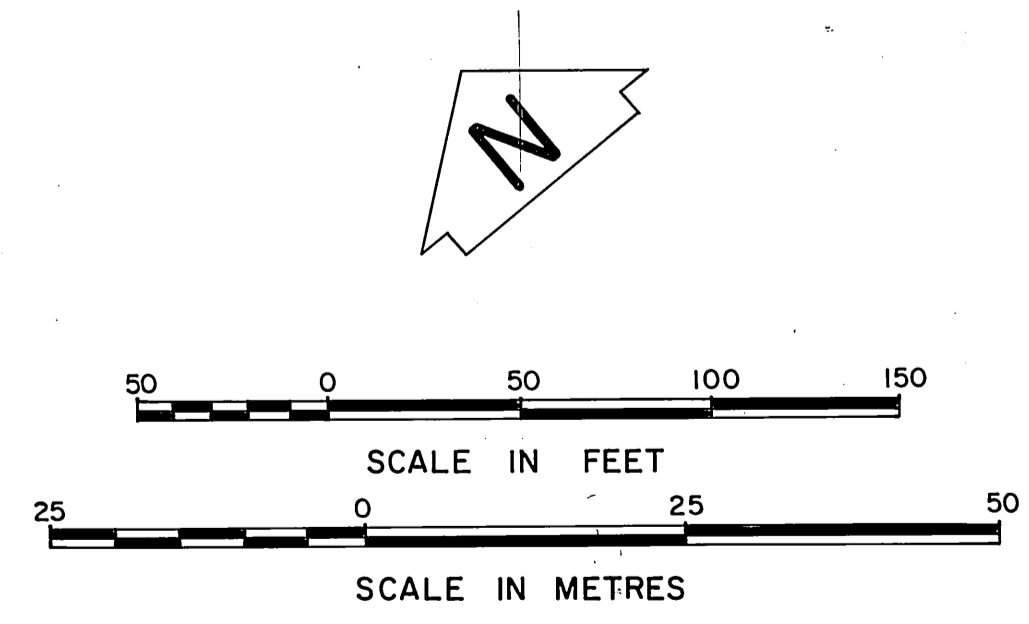
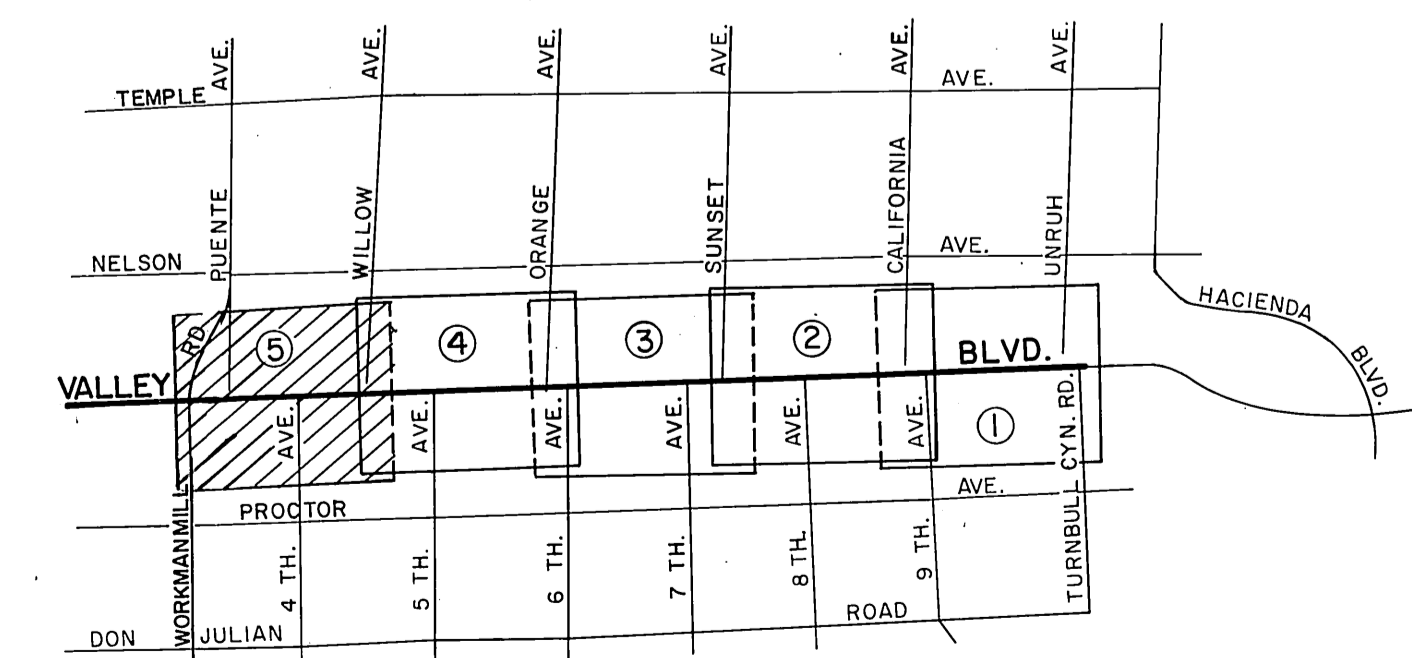
COUNTY OF LOS ANGELES DEPARTMENT OF COUNTY ENGINEER-FACILITIES STEPHEN J. KOONCE-COUNTY ENGINEER PREPARED BY SURVEY DIVISION RICHARD J. MITCHELL ASSISTANT COUNTY ENGINEER R. B. EMMOTT SURVEYED BY A. M. HELLSTROM CHECKED BY R. G. HILARIO DRAWN BY B. GOINS	ALIGNMENT MAP OF <b>VALLEY BOULEVARD</b> FROM TURNBULL CANYON ROAD TO WORKMAN MILL ROAD BASIS OF BEARINGS THE CENTER LINE OF VALLEY BOULEVARD (N. 46° 17' 25" W.) AS SHOWN ON C.S.B. 1419-7	COUNTY SURVEYOR'S MAP NO. <b>B-5442</b> SHEET 4 OF 5 SHEETS FILED <i>Mich 28A</i> , 1983 <i>B. J. Mitchell</i> DEPUTY	REVISION NO. BY DATE
		SURVEYED SEPT. 1935 JULY 1950	REFERENCE F. B. 520-155-192 F. B. 744-11-280 JOB NUMBER 1518.06 INDEX MAP NO. 37, 38, 46

C.S.B-2442-B.2.C

C.S.B. 20-10-11



NOTE:  
THIS MAP DELINEATES THE REVISED SOUTHERLY RIGHT OF WAY LINE OF VALLEY BOULEVARD FROM TURNBULL CANYON ROAD TO WORKMAN MILL ROAD ADOPTED BY THE I.E.C. DATED DEC. 15, 1982, AND SUPERSEDES C.S.B. 5033.



COUNTY OF LOS ANGELES DEPARTMENT OF COUNTY ENGINEER-FACILITIES STEPHEN J. KOONCE-COUNTY ENGINEER PREPARED BY SURVEY DIVISION RICHARD J. MITCHELL ASSISTANT DEPUTY COUNTY ENGINEER R. B. EMMOTT SURVEYED BY A. N. HELLSTROM CHECKED BY B. G. HILARIO DRAWN BY B. GOINS	ALIGNMENT MAP OF <b>VALLEY BOULEVARD</b> FROM <b>TURNBULL CANYON ROAD</b> TO <b>WORKMAN MILL ROAD</b> BASIS OF BEARINGS THE CENTER LINE OF VALLEY BOULEVARD (N. 46°17'25"W.) AS SHOWN ON C.S.B. 1419-7	COUNTY SURVEYOR'S MAP NO. <b>B-5442</b>	REVISION NO. BY DATE
		SHEET 5 OF 5 SHEETS FILED: <i>Plan 28415 B3</i> <i>R.J. Mitchell</i> DEPUTY SURVEYOR SEPT. 15 1950 - JULY 1950	REFERENCE F. B. 520-135-192 F. B. 744-1-280 JOB NUMBER 1518 06

C.S.B. 20-10-11