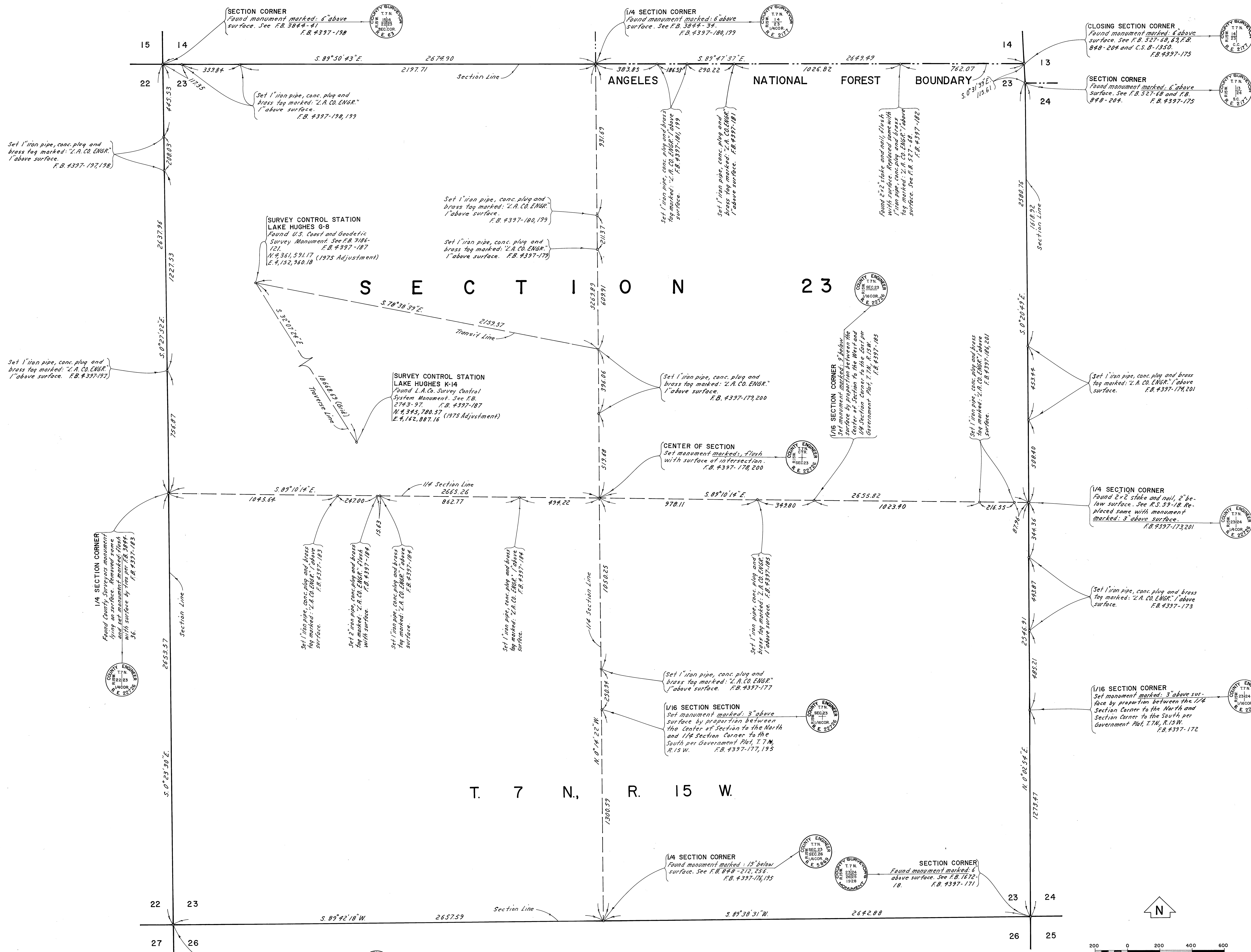


C. 3. B-2425



SURVEY CONTROL STATION LAKE HUGHES G-8
 Found U.S. Coast and Geodetic Survey Monument. See F.B. 7184-121.
 N. 4° 36' 1.59\"/>

SURVEY CONTROL STATION LAKE HUGHES K-14
 Found L.A. Co. Survey Control System Monument. See F.B. 2743-97.
 F.B. 4397-187
 N. 4° 34' 5.78\"/>

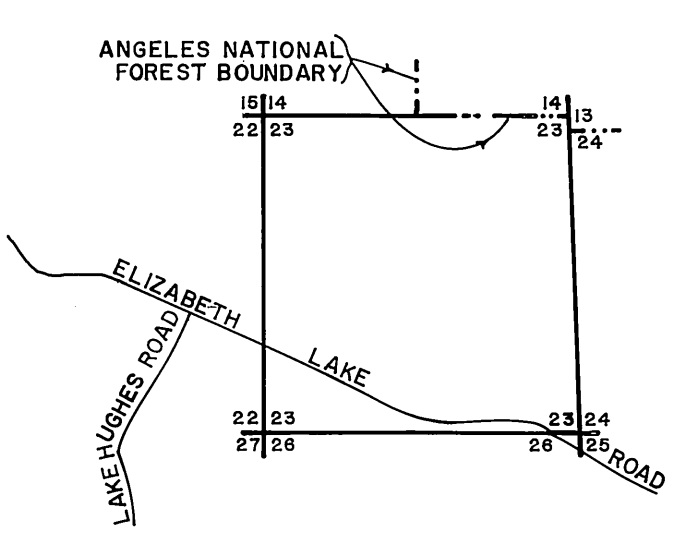
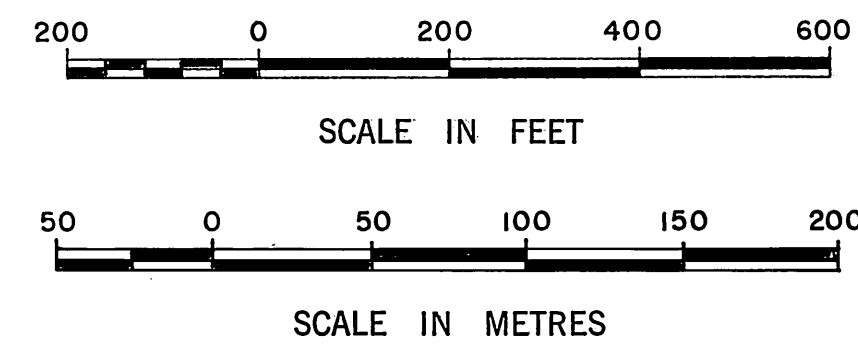
CENTER OF SECTION
 Set monument marked: flush with surface of intersection.
 F.B. 4397-179, 200

(1/16 SECTION CORNER
 Set monument marked: 9\"/>

(1/4 SECTION CORNER
 Found 2 x 2 stake and nail, 2\"/>

(1/16 SECTION CORNER
 Set monument marked: 3\"/>

T. 7 N., R. 15 W.



VICINITY MAP NOT TO SCALE

NOTE:
 THIS MAP WAS FILED FOR THE PURPOSE OF ESTABLISHING SECTION LINES. ALL OTHER CADASTRAL DATA HAS BEEN OMITTED.

COUNTY OF LOS ANGELES DEPARTMENT OF COUNTY ENGINEER-FACILITIES STEPHEN J. KOONCE-COUNTY ENGINEER PREPARED BY SURVEY DIVISION RICHARD J. MITCHELL ASSISTANT DEPUTY COUNTY ENGINEER SURVEYED BY J. C. PIERCE CHECKED BY L. F. RAMOS DRAWN BY G. MASUDA	MAP OF SECTION 23 T. 7 N., R. 15 W., S.B.M.		COUNTY SURVEYOR'S MAP NO. B-5452 SHEET 1 OF 1 SHEET FILED: <i>May 26</i> 1982 <i>R. J. Mitchell</i> DEPUTY SURVEYED JUNE 1980 REFERENCE F.B. 4397	REVISION NO. BY DATE
	BASIS OF BEARINGS CALIFORNIA COORDINATE SYSTEM, ZONE 7			JOB NUMBER 0208.11
	INDEX MAP NO. 354-157			

C. 3. B-2425